

Half Height Locking Pull

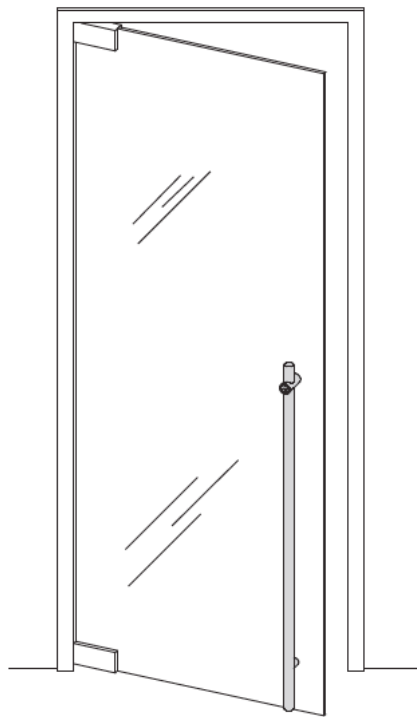
ASSA ABLOY

Installation Instructions for Glass and Wood/Metal Doors

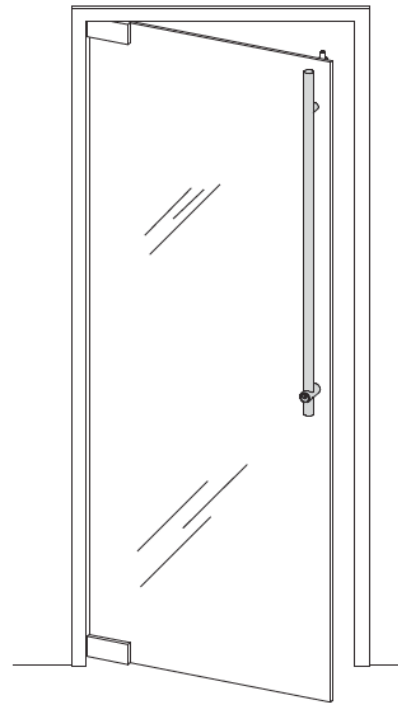
The global leader in
door opening solutions

IMPORTANT: PLEASE READ BEFORE INSTALLING THE LOCKING PULL

The following instructions will decrease your chances of experiencing problems during the installation and ensure a smooth, trouble-free operation of the Locking Pull.



Dead Bolt Down (DBD)



Dead Bolt Up (DBU)

Table of Contents

- 1. Introduction 1
 - 1.1 Description 1
 - 1.2 Parts List 1
 - 1.3 Tools and Supplies 1
- 2. Detailed Parts List 2
- 3. Locking Pull Installation Instructions 3
 - 3.1 Unpacking Details 3
 - 3.2 Install the Exterior Pull (Cylinder Side) 4
 - 3.3 Prepare and Install the Interior Pull (Thumbturn Side) 5
- 4. Cleaning and Maintenance 6
 - 4.1 General Maintenance Instructions 6
 - 4.2 Finish Cleaning Instructions 6

1. Introduction

1.1 Description

- The Rockwood Locking Pull Series offers superior functionality, durability, and aesthetics for swinging and sliding doors.
- The Locking Pull System integrates Rockwood’s contemporary Post Mount style door pull with a deadbolt locking system.
- Please read the installation instructions in the manual carefully before installing the Locking Pull.
- If you have questions, please contact us at (800) 458-2424.

1.2 Parts List

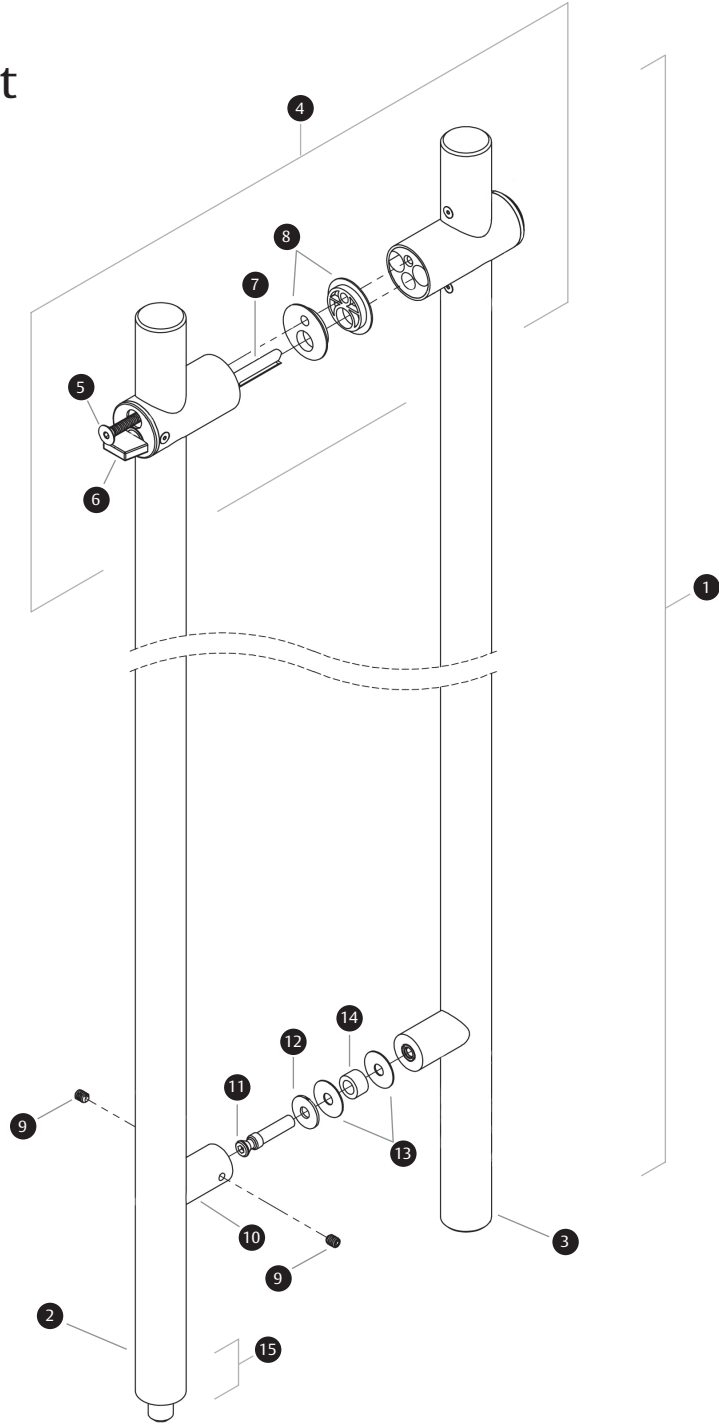
- Please refer to the Detailed Parts List section for a complete list of parts required for installation.

1.3 Tools and Supplies

- The tools and supplies listed below are necessary to complete the installation of the Locking Pull.

Tools Required	Supplies Required
Allen Wrench: 1/8"	Threadlocker
Allen Wrench: 3/16"	
Allen Wrench: 5/32"	

2. Detailed Parts List



Description	Quantity	Description	Quantity
1 Locking Pull Assembly	1	9 Set Screw	2
2 Interior Pull	1	10 Mounting Post	1
3 Exterior Pull	1	11 Conehead Machine Screw	1
4 Lock Cylinder Assembly	1	12 Metal Washer	1
5 Mounting Screw	1	13 Plastic Washer	2
6 Thumbturn	1	14 Door Bushing	1
7 Shaft	1	15 Interior Pull Locking End	1
8 Lock Housing Bushing	2		

ASSA ABLOY

The global leader in
door opening solutions

3. Locking Pull Installation Instructions

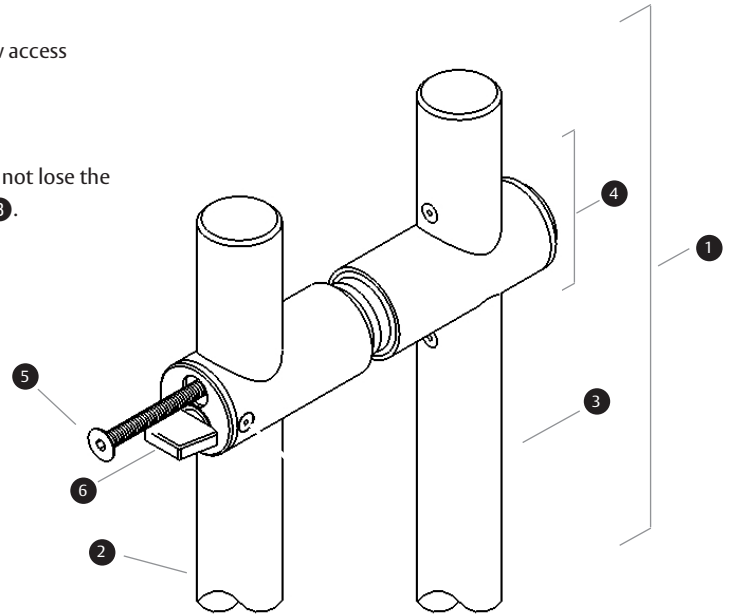
3.1 Unpacking Details

WARNING: Flexing the Locking Pull Assembly may cause it to become loose at crucial joints, especially in longer pulls.

*Save all fasteners as they are needed for installation.

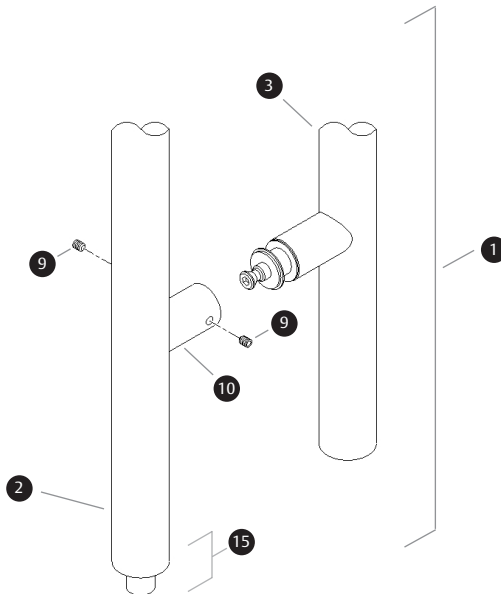
- Carefully remove the Locking Pull Assembly **1** from the packaging while supporting it from flexing, and lay it flat on a work surface or floor.
- Use a 1/8" Allen wrench to loosen (do not remove) the Set Screws **9** on the Mounting Post **10** located at the Interior Pull Locking End **15**.
- At the Lock Cylinder Assembly **4**, rotate the Thumbturn **6** to allow access to the Mounting Screw **5**.
- Use a 5/32" Allen wrench to remove the Mounting Screw **5**.
- Separate the Interior Pull **2** and the Exterior Pull **3**. Be cautious to not lose the door bushings in between the Interior Pull **2** and the Exterior Pull **3**.

- 1** Locking Pull Assembly
- 9** Set Screw (x2)
- 10** Mounting Post
- 15** Interior Pull Locking End
- 4** Lock Cylinder Assembly
- 6** Thumbturn
- 5** Mounting Screw
- 2** Interior Pull
- 3** Exterior Pull



Required Tools

Allen Wrench: 1/8"
Allen Wrench: 5/32"



ASSA ABLOY

3.2 Install the Exterior Pull (Cylinder Side)

- Remove the Conehead Machine Screw ⑪, *Metal Washer ⑫, *Door Bushing ⑭, and two *Plastic Washers ⑬ from the Exterior Pull ③.

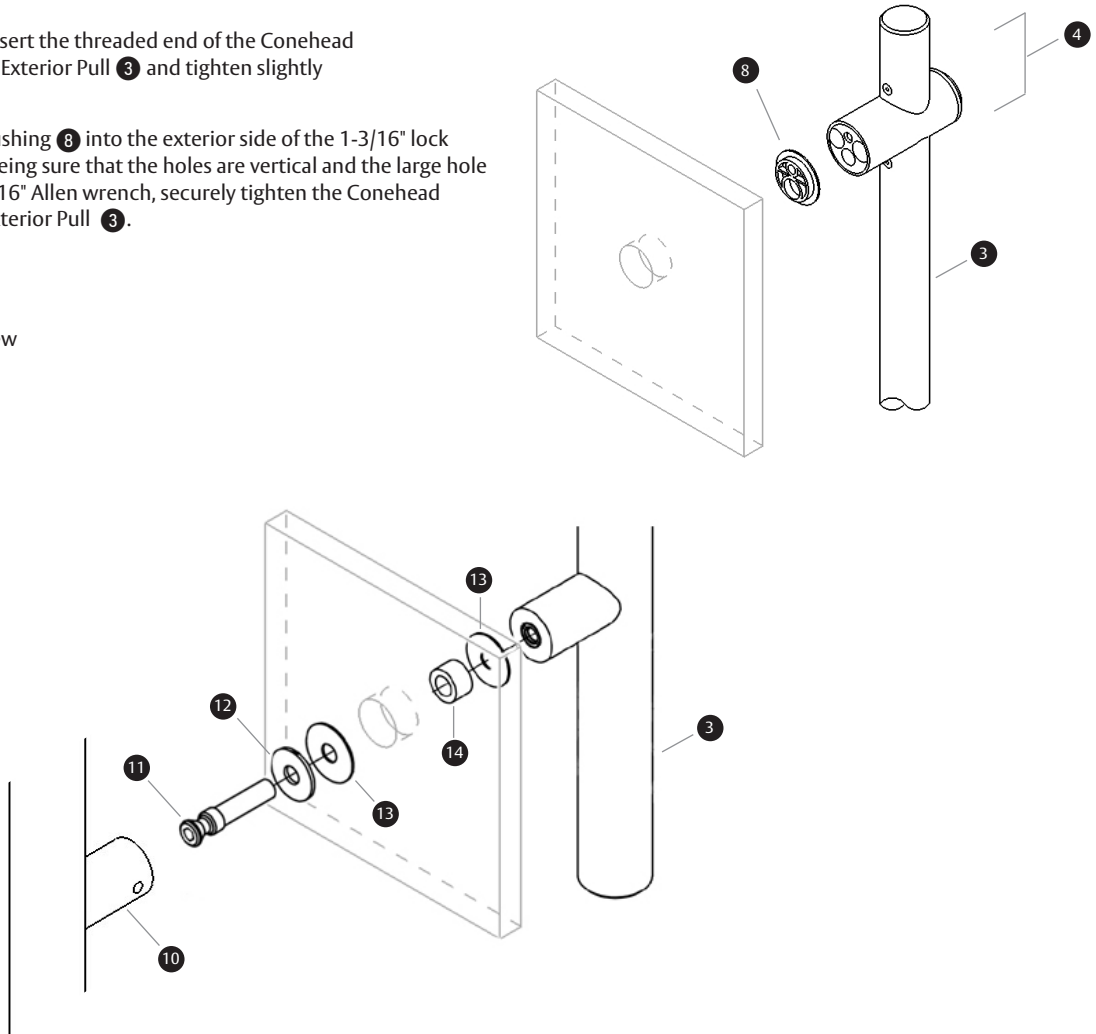
*For glass doors only.

- Insert the Door Bushing ⑭ into the hole in the door in correlation with the Mounting Post ⑩ location.
- Slide the Metal Washer ⑫ over the Conehead Machine Screw ⑪ on the interior side of the door.
- Slide one Plastic Washer ⑬ over the Conehead Machine Screw ⑪ so it sits against the Metal Washer ⑫ on the interior side of the door.
- From the interior side, insert the Conehead Machine Screw ⑪ through the Door Bushing ⑭ in the door.
- Slide the other Plastic Washer ⑬ over the protruding threads of the Conehead Machine Screw ⑪ on the exterior side of the door.
- Apply a small drop of Threadlocker to the threads of the Conehead Machine Screw ⑪.
- Holding the pull in place, insert the threaded end of the Conehead Machine Screw ⑪ into the Exterior Pull ③ and tighten slightly using a 3/16" Allen wrench.
- Insert one Lock Housing Bushing ⑧ into the exterior side of the 1-3/16" lock housing hole in the door, being sure that the holes are vertical and the large hole is at the bottom. Using a 3/16" Allen wrench, securely tighten the Conehead Machine Screw ⑪ in the Exterior Pull ③.

- ⑪ Conehead Machine Screw
- ⑫ Metal Washer
- ⑭ Door Bushing
- ⑬ Plastic Washer
- ③ Exterior Pull
- ⑩ Mounting Post
- ⑧ Lock Housing Bushing
- ④ Lock Cylinder Assembly

Required Tools

Allen Wrench: 3/16"

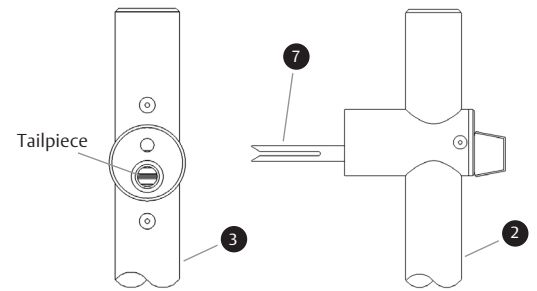


ASSA ABLOY

The global leader in
door opening solutions

3.3 Prepare and Install the Interior Pull (Thumbturn Side)

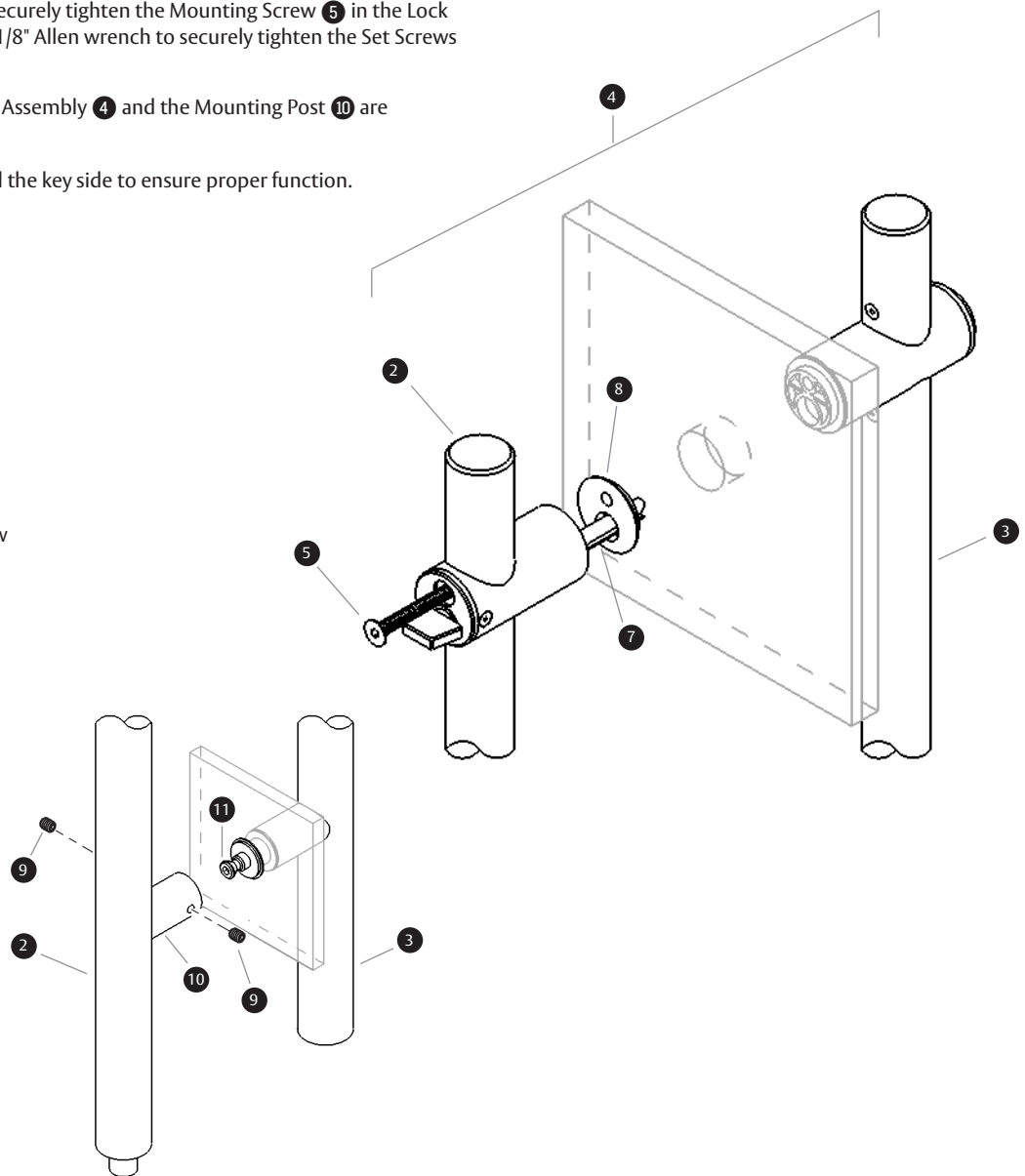
- On the Exterior Pull **3**, ensure the tailpiece is horizontal.
- On the Interior Pull **2**, ensure the split in the Shaft **7** is horizontal.
- Position the Interior Pull **2** for installation and ensure proper alignment of the Mounting Post **10** and the Lock Cylinder Assembly **4**.
- Apply a small drop of Threadlocker to the threads of the Mounting Screw **5**.
- Simultaneously slide the Shaft **7** of the Lock Cylinder Assembly **4** and the Mounting Screw **5** through the holes in the Lock Housing Bushing **8** while sliding the Conehead Mounting Screw **11** head into the Mounting Post **10** at the end of the pull.
- Use a 5/32" Allen wrench to securely tighten the Mounting Screw **5** in the Lock Cylinder Assembly **4**. Use a 1/8" Allen wrench to securely tighten the Set Screws **9** on the Mounting Post **10**.
- Ensure that the Lock Cylinder Assembly **4** and the Mounting Post **10** are secured tightly to the door.
- Cycle the thumbturn side and the key side to ensure proper function.



- 3** Exterior Pull
- 2** Interior Pull
- 7** Shaft
- 4** Lock Cylinder Assembly
- 5** Mounting Screw
- 8** Lock Housing Bushing
- 11** Conehead Mounting Screw
- 10** Mounting Post
- 9** Set Screw

Required Tools

Allen Wrench: 1/8"
Allen Wrench: 5/32"



ASSA ABLOY

4. Cleaning and Maintenance

4.1 General Maintenance Instructions

- Periodically check the fasteners. The fasteners must not be loose. If the fasteners are loose, reapply threadlocker and tighten as necessary.

4.2 Finish Cleaning Instructions

- **CAUTION:** Before you clean the entire Locking Door Pull, clean a small test area to make sure that you are satisfied with the results.
- Frequent cleaning extends the life of all finishes.

Finish Code	Finish	Cleaning Instructions
US3	Polished Brass, Clear Coated	Use a soft cloth and mild soap and water. Never use brass polish or an abrasive cleaner unless you intend to remove all clear coat and totally refinish the product.
US4	Satin Brass, Clear Coated	Use a soft cloth and mild soap and water. Never use brass polish or an abrasive cleaner unless you intend to remove all clear coat and totally refinish the product.
US10BL	Satin Oxidized Bronze, Clear Coated	Use a soft cloth and mild soap and water. Never use brass polish or an abrasive cleaner unless you intend to remove all clear coat and totally refinish the product.
US32	Polished Stainless Steel	Use a soft cloth and a good metal cleaner. We recommend Mr. Metal by S.C. Johnson Company.
US32D	Satin Stainless Steel	Use a soft cloth and a good metal cleaner. We recommend Mr. Metal by S.C. Johnson Company.
US32MS	Polished MicroShield Coated	Use a soft cloth and mild soap and water. Never use brass polish or an abrasive cleaner unless you intend to remove all clear coat and totally refinish the product.
US32DMS	Satin MicroShield Coated	Use a soft cloth and mild soap and water. Never use brass polish or an abrasive cleaner unless you intend to remove all clear coat and totally refinish the product.
10BE	Oxidized & Oiled Bronze Powder Coat Equivalent	Use a soft cloth and mild soap and water. Never use brass polish or an abrasive cleaner unless you intend to remove all coating and totally refinish the product.
RPC	Red Powder Coat	Use a soft cloth and mild soap and water. Never use brass polish or an abrasive cleaner unless you intend to remove all coating and totally refinish the product.
WPC	White Powder Coat	Use a soft cloth and mild soap and water. Never use brass polish or an abrasive cleaner unless you intend to remove all coating and totally refinish the product.
BPC	Black Powder Coat	Use a soft cloth and mild soap and water. Never use brass polish or an abrasive cleaner unless you intend to remove all coating and totally refinish the product.
BSP	Black Suede Powder Coat	Use a soft cloth and mild soap and water. Never use brass polish or an abrasive cleaner unless you intend to remove all coating and totally refinish the product.
FBPC	Flat Black Powder Coat	Use a soft cloth and mild soap and water. Never use brass polish or an abrasive cleaner unless you intend to remove all coating and totally refinish the product.
CUSTOM PC	Custom Powder Coat	Use a soft cloth and mild soap and water. Never use brass polish or an abrasive cleaner unless you intend to remove all coating and totally refinish the product.

ASSA ABLOY is the global
leader in door opening solutions,
dedicated to satisfying
end-user needs for security
safety and convenience

ASSA ABLOY

300 Main Street
Rockwood, Pennsylvania 15557
P: 800.458.2424 | F: 800.922.9212
www.assaabloydooraccessories.us | orders.rockwood@assaabloy.com

Copyright © 2018, ASSA ABLOY Accessories and Door Controls Group, Inc. All rights reserved. Reproduction in whole
or in part without the express written permission of ASSA ABLOY Accessories and Door Controls Group, Inc. is prohibited.