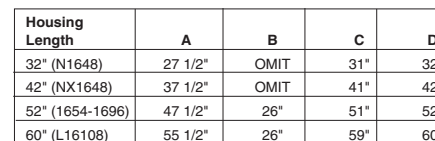
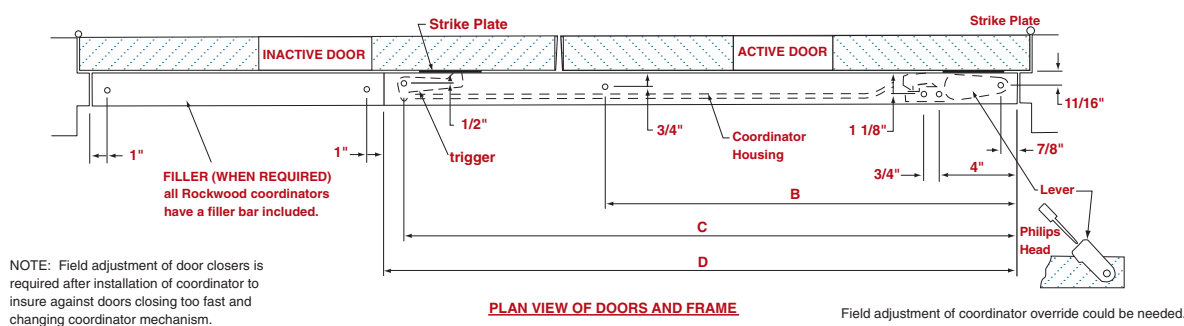


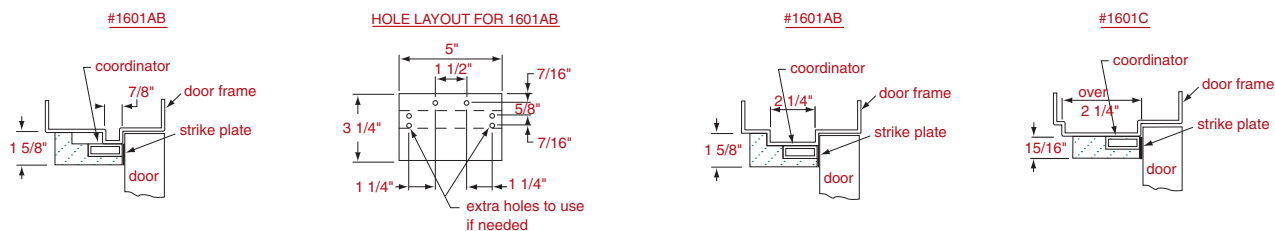
STEP 1. Close door against stop. Locate active and inactive door strikes as shown in drawing #1654 - drill first hole in strike on active door at 1 1/4" from stop on frame and first hole on strike for inactive door at 47 1/2"



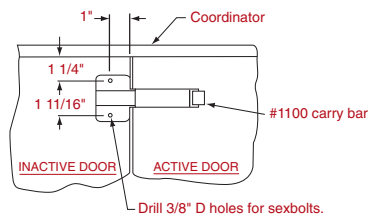
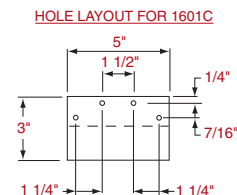
STEP 2. Locate 1600 series coordinator as shown. Drill mounting holes with #10 drill. Install 12-24 thread forming screws. Be sure that coordinator is properly positioned before drilling and installing screws. See chart above for mounting hole locations. Reinforcement is advised at hole locations in frame.



STEP 3. STOP APPLIED HDW, MOUNTING BRACKETS - In some situations, where hardware such as parallel arm door closers or surface vertical rod strikes would normally be mounted to the door stop, installation becomes a little more complicated because the coordinator now covers the stop and no holes can be drilled (in the coordinator) which would interfere with the coordinator mechanism. The mounting brackets #1601AB (for stop widths 7/8" to 2 1/4") and #1601C (for stop widths over 2 1/4") are installed over the coordinator and mounted to the door frame. The hardware is then installed by drilling and tapping holes in the bracket. (NOTE: When mounting brackets are used, be sure to lower mounting holes for door applied hardware 15/16" to allow for coordinator and mounting brackets. The mounting bracket type and quantity need to be ordered with the coordinator.



STEP 4. #1100 CARRY OPEN BAR - This item can be supplied in situations which can allow the inactive door to open before the active door. The carry bar will throw the active door open, and allow the coordinator to engage both doors, and coordinate them to close correctly. The carry bar is not needed when the inactive door is equipped with flush bolts.



Not To Scale

Template No.
T-1600
Rev. 1/23/03

NOTE: Rockwood reserves the right to make product changes and is not responsible for obsolete template errors. To ensure your template is current, please visit our website at www.rockwoodmfg.com or call us at 800-458-2424.