

OH1000 Series Surface Mounted Door Stops and Holders

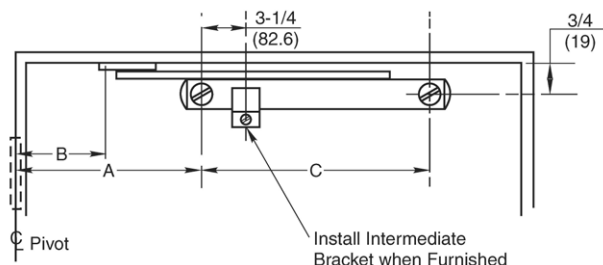
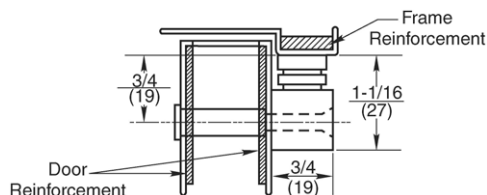
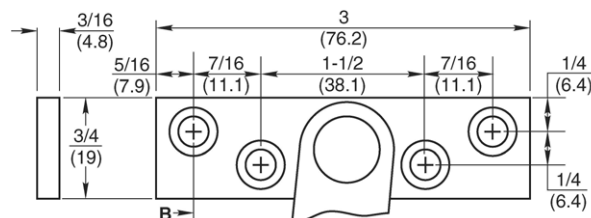
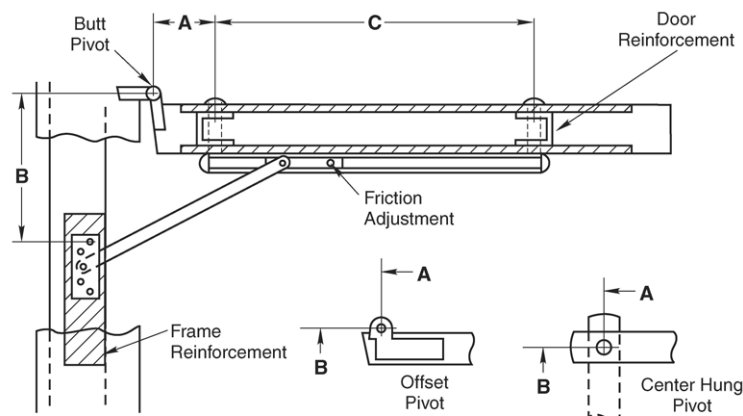
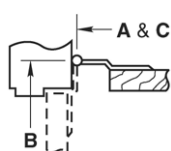
INSTALLATION INSTRUCTIONS

1. Select proper dimensions from chart on back side of page.
2. Locate "A" and "B" dimensions on door and frame.
3. Install jamb bracket on stop strip as shown.
4. Position channel on door with shock end located towards pivot. Drill 5/16 (7.9) dia. sex bolt hole, "A" dimension, 3/4 (19) down from stop strip as shown.
5. Install channel on door with "A" dimension sex bolt. Locate "C" dimension sex bolt hole making sure that channel is horizontal and parallel with stop strip. Drill 5/16 (7.9) dia. sex bolt hole and finish installing holder.

NOTES:

- All hollow metal frames should be properly reinforced with 3/16" (4.8) min. thickness x 12" (304.8) min. length reinforcement plates.
- All hollow metal doors should be properly reinforced.
- All drilling and tapping to be done by field men.
- Suggest mounting door stop or holder first and then other hardware to clear. Contact factory if interference results with other hardware.
- Jamb bracket to be on same centerline as channel.
- Intermediate bracket #12 x 3/4" FS MS.
- All dimensions are given in inches (mm).

CAUTION: Note location of swing clear hinge centerline to determine "A" and "B" dimensions.



FASTENERS:

Jamb: #12 x 1-1/2" FH WS or #12-24 x 1/2" FH MS (4 Places)
Door: #12-24 x 1-1/2" FH MS and 5/16" Dia. Sex Bolt (2 Places)



Not To Scale

Template No.
T-OH1000
Rev. 04/24/12

NOTE: Rockwood reserves the right to make product changes and is not responsible for obsolete template errors. To ensure your template is current, please visit our website at www.rockwoodmfg.com or call us at 800-458-2424.

OH1000 Series Surface Mounted Door Stops and Holders

When using center hung pivots, check pivot manufacturer's compatibility prior to specifying.

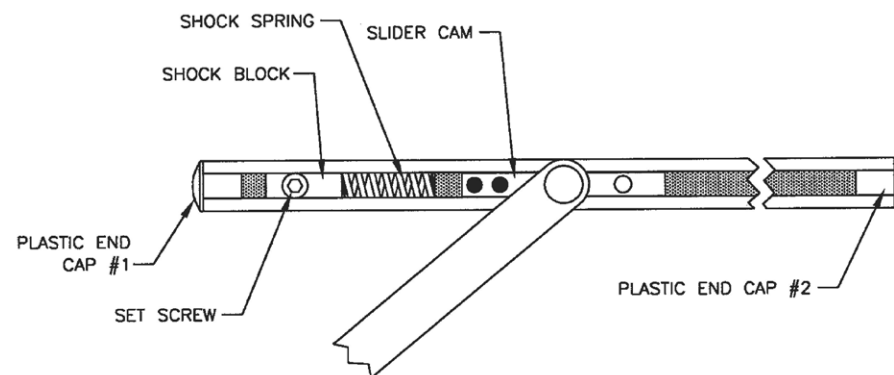
*Butt mounting only.
Reversible, non-handed.

OH1000 Series Surface Mounted Door Stops and Holders

1. See other side for installation instructions.
2. Select proper dimensions noted below.
3. Add 5/8" to "A" dimension for dead stop.
4. All dimensions given in inches.

1 3/4 - 2 1/4 Butts & 3/4 Offset Pivot	Device Number					
	Stop	Multi	Door Opening	A	B	C
	1001S	1001M	18 - 24	1-3/16	3-9/16	14-13/16
	1002S	1002M	24-1/16 - 30	3-3/4	4-3/16	16
	1003S	1003M	30-1/16 - 36	6-9/16	5-3/8	17-3/4
	1004S	1004M	36-1/16 - 42	9-13/16	7-1/16	20-3/16
	1005S	1005M	42-1/16 - 48	13-3/4	8-5/16	22

Center Hung	Device Number					
	Stop	Multi	Door Opening	A	B	C
	1001S	1001M	21 - 26-1/2	1-5/8	4	14-13/16
	1002S	1002M	26-9/16 - 32	4-7/16	4-7/8	16
	1003S	1003M	32-1/16 - 38	7-3/16	6	17-3/4
	1004S	1004M	38-1/16 - 45	10-3/8	7-5/8	20-3/16
	1005S	1005M	45-1/16 - 48	14-5/16	8-7/8	22



TO SELECT DEGREE OF STOP

1. With a 3/16 hex key wrench, loosen the set screw in the shock block.
2. Open door to desired degree of opening.
3. Slide shock block and spring until the spring touches slider cam.
4. Tighten set screw.
5. Verify door opening position and re-adjust, as needed.

Template No. T-OH1000
Rev. 04/24/12

NOTE: Rockwood reserves the right to make product changes and is not responsible for obsolete template errors.
To ensure your template is current, please visit our website at www.rockwoodmfg.com or call us at 800-458-2424.