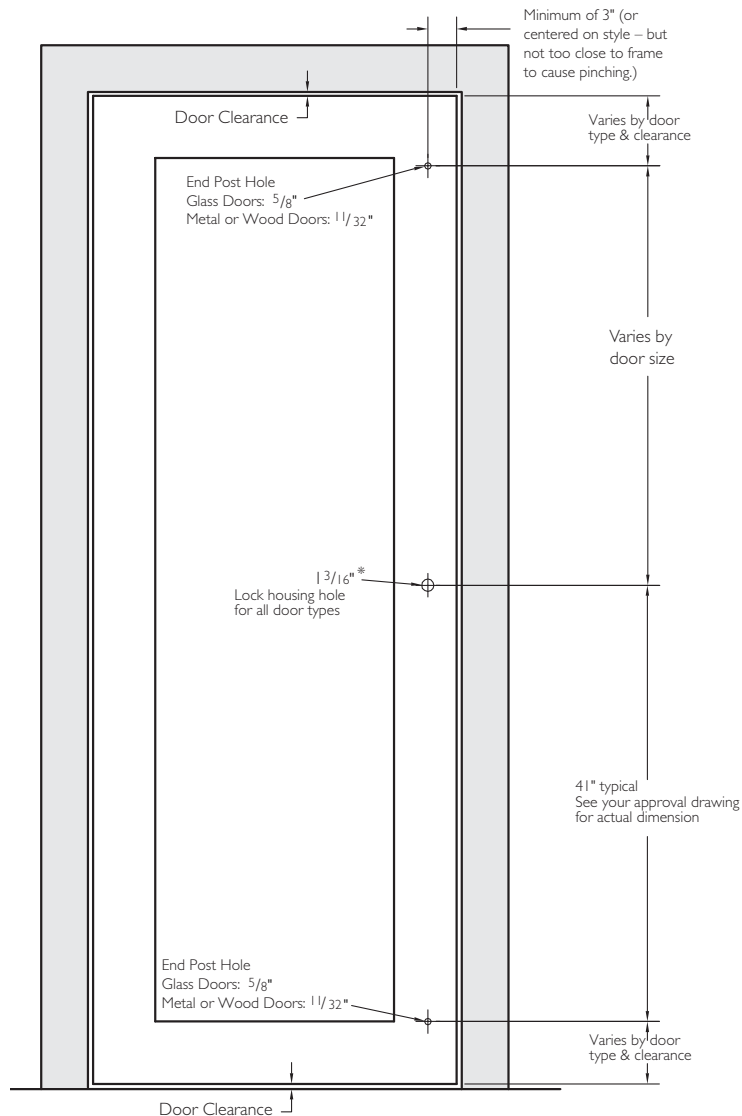


# APPLICATION DETAILS

## ALUMINUM, WOOD, HOLLOW METAL AND GLASS DOORS

### Installation Reference



### Holes Sizes Required

#### Glass Door

- End Posts:  $\frac{5}{8}$ "  $\varnothing$
- Lock Housing:  $1\frac{3}{16}$ "  $\varnothing$

#### Aluminum, Wood, Hollow Metal Doors:

- End Posts:  $1\frac{1}{32}$ "
- Lock Housing:  $1\frac{3}{16}$ "

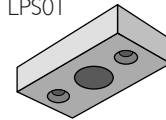
### Notes:

1. Only drill the **holes required** for the model you are installing.
2. Only full height locking pulls require all three holes.

### Top Strike Options

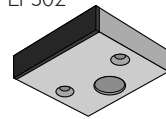
Custom Strikes Available

LPS01



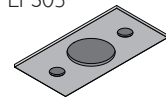
- $\frac{3}{4}$ " x  $1\frac{1}{2}$ " x 3"

LPS02



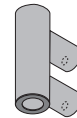
- $\frac{3}{4}$ " x  $2\frac{1}{2}$ " x 3"
- Rubber Stop

LPS03



- $050$ " x  $1\frac{1}{8}$ " x  $2\frac{1}{4}$ "

LPS04



- $1\frac{1}{4}$ " dia. x  $4\frac{1}{2}$ " h

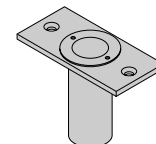
LPS05



- $1\frac{1}{4}$ " dia. x  $4\frac{1}{2}$ " h

### Bottom Strike Option

#570



Dustproof Strike  
#570