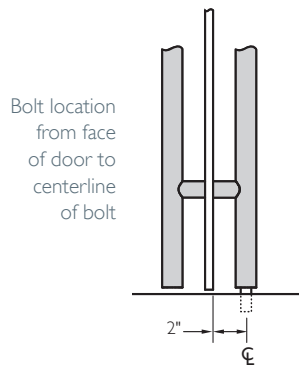


APPLICATION DETAILS

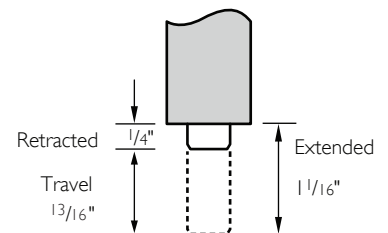
GLASS DOORS

Location from Door



All glass door applications include a bushing and washer to insulate the glass from the pull. Sturdy fasteners securely attach the pull to the door making for a durable, trouble free installation. Simple glass prep requires two (or three) round holes.

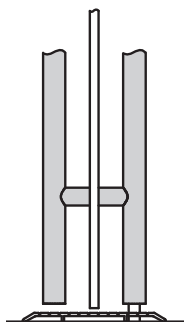
Bolt Adjustment



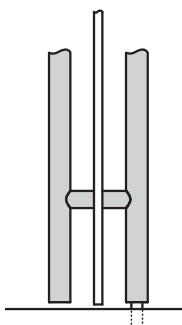
Adjusts $\frac{1}{4}"$ in and out from the shown factory settings.

Bolt into Floor Models - Detail at Floor

DBD - Half Height Pull - Bolts Down
 FHD - Full Height Pull - Bolts Down
 FHB - Full Height Pull - Bolts Up and Down



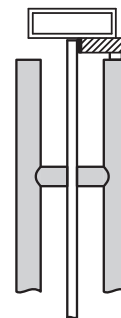
Bottom Detail with Threshold



Bottom Detail without Threshold

Bolt into Head Models - Detail at Head

DBU - Half Height Pull - Bolts Up
 FHU - Full Height Pull - Bolts Up
 FHB - Full Height Pull - Bolts Up and Down



Head Detail with Surface Strike
 Typical configuration shown