

Flush Pull No. 96



Material: .125" Aluminum, Brass, Bronze, Stainless Steel

Finishes: Available in standard architectural finishes (see page 7).

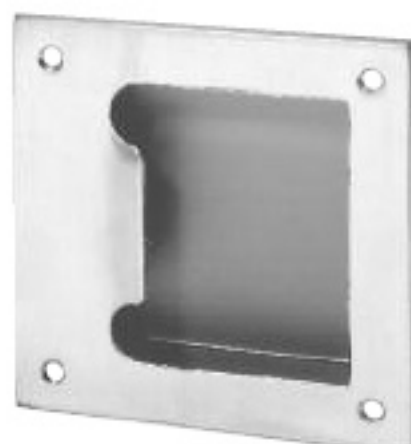
Fastener: #8 x 7/8 SMS

Options:

- TORX - security torx screws.
- Special sizes.
- Cylinder Cutouts (CFC) and Turn Knob Cutouts (CTFF). See page B1 for standard locations and sizes.

No.	Size	Grip Opening	Depth	Weight	ANSI A156.6
96	4" x 16"	1 3/4" x 3 1/8"	7/8"	2.2 lbs.	J403

Barrier Free Flush Pulls No. BF97, BF97L



No. BF97

Material: .125" Brass, Bronze, Stainless Steel

Finishes: Available in standard architectural finishes, and US32DMS (see page 7).

Fastener: No. BF97: #8 x 7/8 SMS

No. BF97L: 10-24 Stud Welded Lugs and 10-24 Thru Bolts

Options: TORX - security torx screws.

Features: ADA flush pull.



No. BF97L

No.	Size	Grip Opening	Depth	Weight	ANSI A156.6
BF97	5" x 5"	2 1/2" x 3 1/2"	7/8"	1.0 lbs.	J403
BF97L	5" x 5"	2 1/2" x 3 1/2"	7/8"	1.0 lbs.	J403