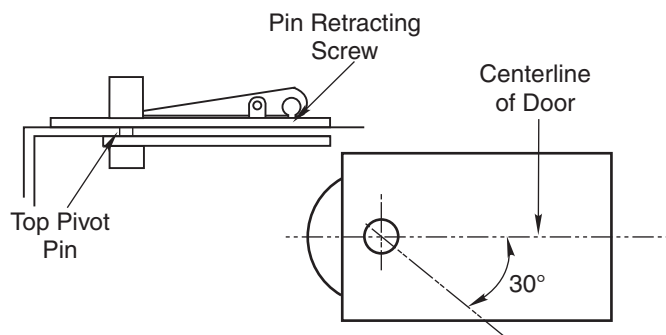
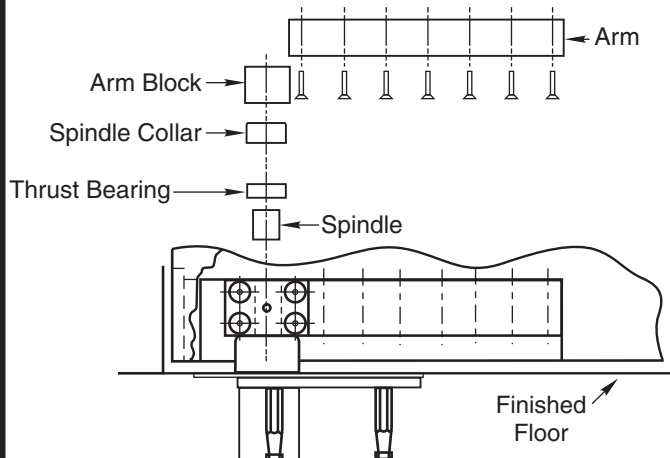
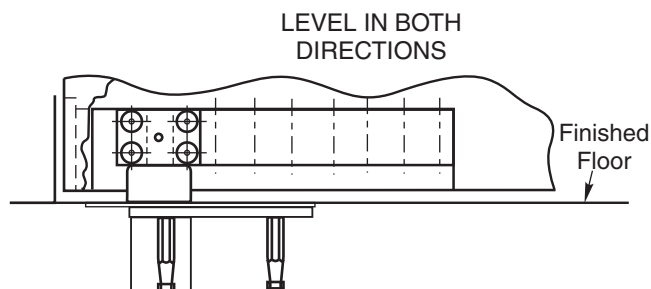
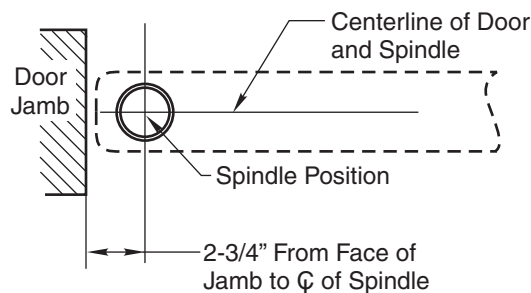


## H117-3/4 Pivot Set x 587 Arm



### 1. Locate Pivot

- Measure 2-3/4" out from door jamb on centerline of door. This is the location of the spindle center.

### 2. Install Cement Case in Floor

- For floor plate application: Cement case is set 1/16" (1.6mm) below floor level.
- For threshold application: Cement case is set flush with floor.
- Set cement case in floor and block in position.
- Case should be parallel with center line of door.
- CEMENT CASE SHOULD BE LEVEL.
- Grout in cement case.

### 3. Install Pivot and Arm

- Install top pivot in door per template.
- Install top pivot in jamb per template.
- Centerline of pivot pin should line up with centerline of spindle. Use plumb line to assure accuracy.
- Mortise door for arm.
- Install arm in bottom of door.

### 4. Hang Door

- Retract top pivot pin by turning retracting pin screw counterclockwise.
- Slide door on spindle. Attach arm cap but do not tighten.
- Line up two portions of top pivot and turn pin retracting screw clockwise.
- Tighten arm end block screws.
- Drill and tap for #8-32 machine screw, centered (screw by others).

## H117-3/4 Pivot Set x 587 Arm for Heavy Doors Center Hung

**RIXSON®**  
ASSA ABLOY

www.rixson.com

TEMPLATE NUMBER

**IS-H117-3/4 x 587**

DATE

**07-09**