

## Application

- Exterior or Interior Doors
- Weight to 1,000 lbs.
- Door Sizes up to 4'0"x 8'6"\* (1219 x 2591mm)
- Non-handed

## Product Description & Features

- H340 top pivot included
- Bottom pivot is mortised into floor
- End load arm for minimum 2" (51mm) thick doors
- Pivot point centered in thickness of door
- Additional surface applied thrust bearing
- Door must have radius on pivot edge
- Pivot point remains constant at 2-3/4" (70mm) from the edge of the door
- Pivot set features sealed bearings for protection against weather and debris
- Not allowed for use on labeled doors and frames
- Furnished with wood and machine screws

## Optional Features

- Available with extended spindles in 1/2" (13mm) increments up to 2" (51mm) longer than standard

## Compliance

- ANSI/C07011

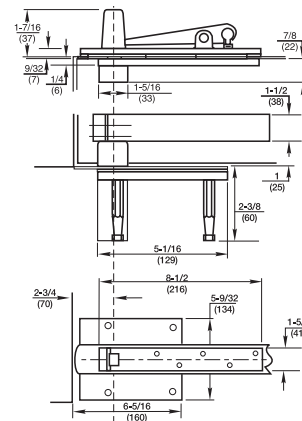
Center hung pivots are door hanging means only. To close doors, see floor closer sections of the catalogs.

\*For doors taller than 8'6" use top pivot H345 in lieu of H340

## Model H117-3/4



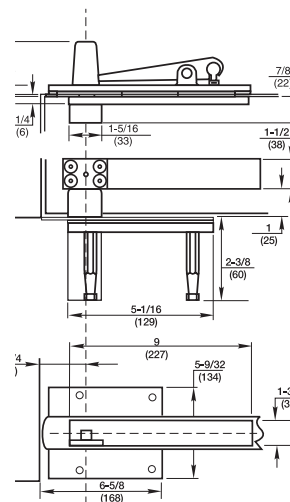
## Technical Information



## Model H117-3/4 X 587 Arm



## Technical Information



**RIXSON®**  
**ASSA ABLOY**

Experience a safer  
and more open world