

Model E-H340

Application

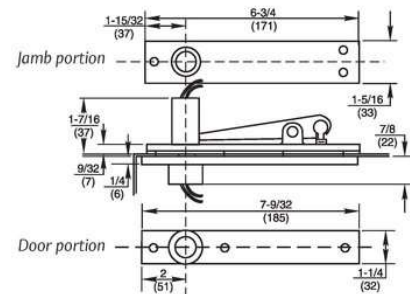
- Center Hung
- Top Pivot for Power Transfer
- Non-handed

Product Description & Features

- Walking beam type pivot – 11/16" (17mm) diameter pivot pin with 3/4" (19mm) engagement
- Can be used with any center hung bottom pivot or floor closer. Order the pivot set LTP (less top pivot) with E-H340 as a separate line
- Heavy-duty needle bearing
- Specify two, four, six, eight or twelve wires
- Two-wire is available in 18 gauge and is not available ElectroLynx®
- Four, six, eight and twelve wires are 24 gauge and available in ElectroLynx®. Suffix QC# (number of wires)
- Completely concealed when door is closed
- Furnished with wood and machine screws



Technical Information



Model E-H345

Application

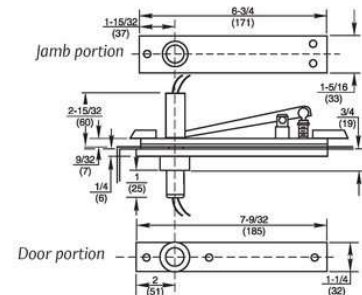
- Fully Concealed
- Center Hung
- Top Pivot for Power Transfer
- Non-handed
- Earthquake Tolerant
- Taller Doors

Product Description & Features

- Walking beam-type pivot – 11/16" (17mm) diameter pivot pin
- Longer pivot pin throw engages in top of door 1-3/4" (44mm). Ideal for locations where there is a fear of dramatic building settling
- Can be used with any center hung bottom pivot or floor closer whose pivot point is 2-3/4" (70mm), or greater, from the edge of the door. Order the pivot set LTP (less top pivot) with E-H345 as a separate line
- Used with heavy-duty pivots & floor closers
- Heavy-duty needle bearing
- For doors over 8'6" in height
- Specify two, four, six, eight or twelve wires
- Two-wire is available in 18 gauge and is not available with ElectroLynx®
- Four, six, eight and twelve wires are 24 gauge and available in ElectroLynx®. Suffix QC# (number of wires)
- Furnished with wood and machine screws



Technical Information



RIXSON®
ASSA ABLOY

Experience a safer
and more open world