

Application

- Interior Doors
- Weight up to 150 lbs.
- Door Sizes up to 3'0" x 8'0" (914x2438mm)
- Door Thickness 1-3/8" to 1-3/4" (34-44mm)
- Non Handed

Product Description & Features

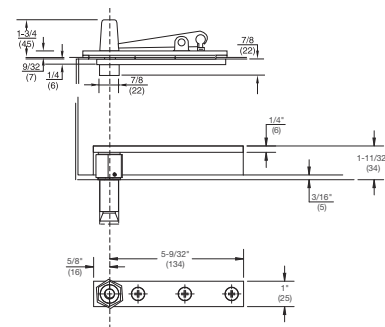
- 320 top pivot included
- Bottom pivot mounts directly into concrete floor
- Pivot point centered in thickness of the door
- Door must have radius on pivot edge
- Not allowed for use on labeled doors and frames
- 3/8" (10mm) vertical adjustment
- No spindle extensions available
- Furnished with wood and machine screws

Compliance

- ANSI/C07032



Technical Information



Model 178

Application

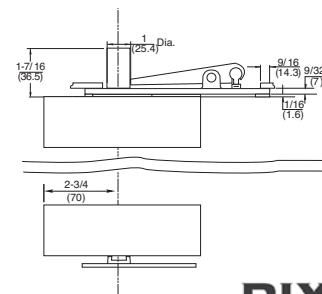
- Interior Doors
- Weight to 175 lbs.
- Door Sizes up to 3'0" x 8'0" (914 x 2438mm)
- Non Handed

Product Description & Features

- Used on full glass doors
- Doors do not return to center
- Accommodates glass thicknesses 3/8"-1/2" (10-13mm)
- Includes special floor portion, top and bottom patch fittings and walking beam top pivot



Technical Information



RIXSON®
ASSA ABLOY