

No. 44 (Check Only — No Springs)
SURFACE TYPE
double acting door check

page 49

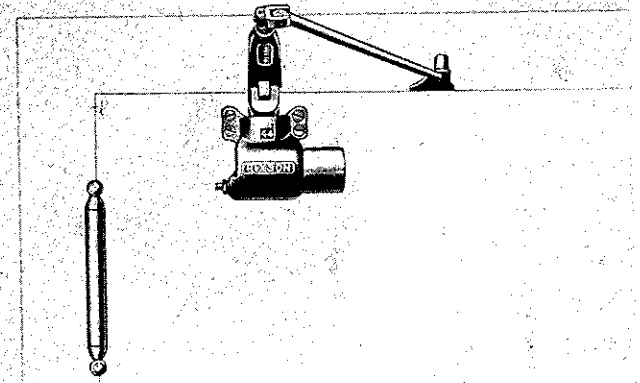
RIXSON

**INSTALLED ON DOORS
HUNG ON DOUBLE ACTING
SPRING HINGES**

This device contains no springs and functions only as a hydraulic check on the otherwise uncontrolled force of spring hinges. The door is brought to a quiet rest at closed position without flapping. The check may be attached on the inside, or the outside of the door. It functions on right or left hand doors without any alterations in the door. The check is screwed to the top of the door and the arm anchor is screwed to the head jamb.

The No. 44 has two checking valves, one controlling the closing action from the inswing of the door and the other the closing action from the outswing of the door. Thus, with entrance doors the check may be adjusted to meet the opposite wind influence on the door's outswing from that of the inswing.

An Interlocking Pivot is always furnished for attachment at the top of the door to prevent the door from pulling away from the jamb at the closing point.

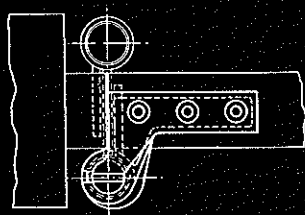


Information needed with order . . .

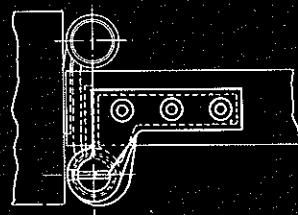
- 1—Give number of check.
- 2—Door Material: Machine or wood screws.
- 3—Jamb Material: Machine or wood screws.
- 4—Finish: Painted dull bronze unless otherwise specified.

Specifications and shipping weights . . .

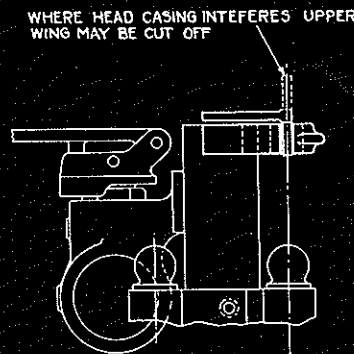
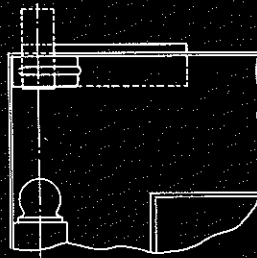
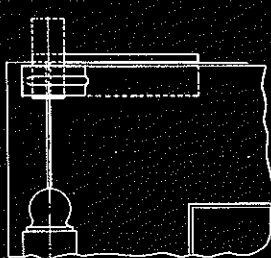
Recommended for doors not over 3'6" wide hung on spring hinges. Packed one to a carton with direction sheet—12 to a case. Weight: 8½ lbs.



MOUNTING WHERE SPRING HINGE
REQUIRING HANGING STRIP IS USED.



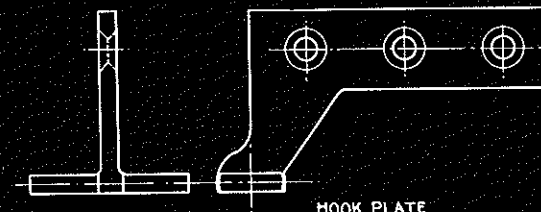
MOUNTING WHERE SPRING HINGE
REQUIRING NO HANGING STRIP IS USED.



WHERE HEAD CASING INTERFERES UPPER
WING MAY BE CUT OFF



RING PLATE



HOOK PLATE