

Application

- Exterior or interior doors
- Door weight up to 200 lbs.

Features

- Single acting
- Handed
- Available non-hold open (N) or automatic hold open (A). Specify 90° or 105°, N or A
- Frame stop required. See Door Control Accessories Catalog (part number 60131). Order separately.
- Adjustable closing speed valve
- Adjustable hydraulic backcheck
- Includes 2183020 bottom pivot
- Product should always be used with auxiliary stop
- 2 year limited warranty

Optional Features

- Extended spindle; 1/2" longer than standard closer spindle. Must be ordered as part of the closer; cannot be added later
- End cap 199 for top and bottom of wood door

Compliance

- ANSI CO5052
- Compliant to ANSI A156.4 standards

Models

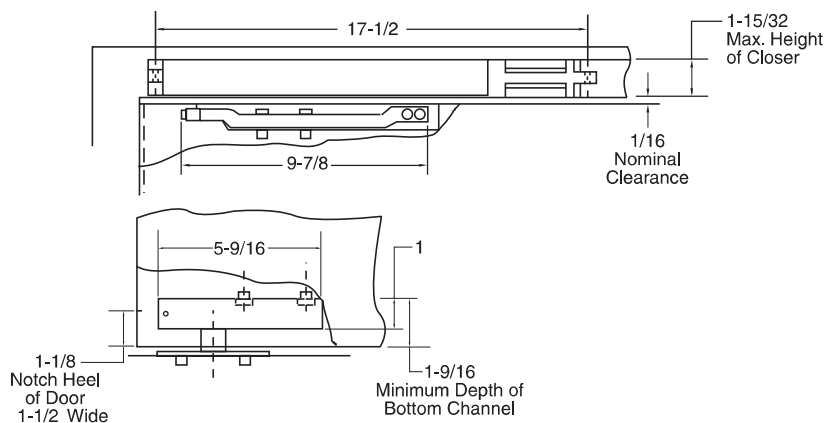
- 700 should be used on aluminum doors and frames. Package includes closer body, arm, frame mounting clips 1639000 and bottom pivot 2183020. Frame size 1-3/4" x 4" minimum.
- M700 should be used on metal doors and frames. Package includes closer body, arm, cover plate, frame mounting channel 1929000* and bottom pivot 2183020. Frame size 2"x 5-1/2" minimum.
- MW700 should be used on wood doors and metal frames. Package includes closer body, arm, cover plate, frame mounting channel 1929000* and bottom pivot 2183020. Frame size 2"x 5-1/2" minimum.
- W700 should be used on wood doors and frames. Package includes closer body, arm, cover plate, frame mounting channel 1980910 and bottom pivot 2183020. Frame size 2"x 5-1/2" minimum.



Closer shown with cover, furnished with W, M, MW models



TECHNICAL INFO



*Note that mounting channels must be welded into frames prior to shipment to job site.

RIXSON®
ASSA ABLOY

HOW TO ORDER

M70 Model	6 Size	90A Hold Open	x 1/2" Ext Spdl Suffix	RH Hand	x 626 Finish
	6*	90A - Hold Open		RH - Right Hand	
	7*	105A - Hold Open		LH - Left Hand	
	8*	90N - Non-Hold Open			
		105N - Non-Hold Open			
700 - Aluminum Door & Frames			1/2" Extended Spindle		All Arms Are
M700 - Metal Doors & Frames					689 Sprayed Alum
MW700 - Wood Doors & Metal Frames					690 Sprayed Dk Brz
W700 - Wood Doors & Frames					691 Sprayed Lt Brz
					693 Sprayed Black
					696 Sprayed Brass
					Cover Plates
					605 Bright Brass
					606 Satin Brass
					611 Bright Bronze
					612 Satin Bronze
					613 Dark Bronze
					613E Dark Oxidized
					Satin Bronze -
					Equivalent
					619 Satin Nickel
					622 Flat Black
					625 Bright Chrome
					626 Satin Chrome
					BSP Black Suede Powder

*See chart below for door widths

SIZE

706, M706, MW706, W706

Exterior 2'6" (762mm)
Interior 3'0" x (914mm)

707, M707, MW707, W707

Exterior 3'0" (914mm)
Interior 3'3" (991mm)

708, M708, MW708, W708

Exterior 3'6" (1067mm)
Interior 3'8" (1118mm)

Standard door height = 8'



ASSA ABLOY, the global leader
in door opening solutions

Application

- Exterior or interior doors
- Door weight up to 200 lbs.

Features

- Double acting
- Non-handed
- Available non-hold open (N) or automatic hold open (A). Specify 90° or 105°, N or A
- Adjustable closing speed valve
- Includes 2183020 bottom pivot
- Product should always be used with auxiliary floor or wall stop
- 2 year limited warranty

Optional Features

- Extended spindle; 1/2" longer than standard closer spindle. Must be ordered as part of the closer; cannot be added later
- End cap 199 for top and bottom of wood door

Compliance

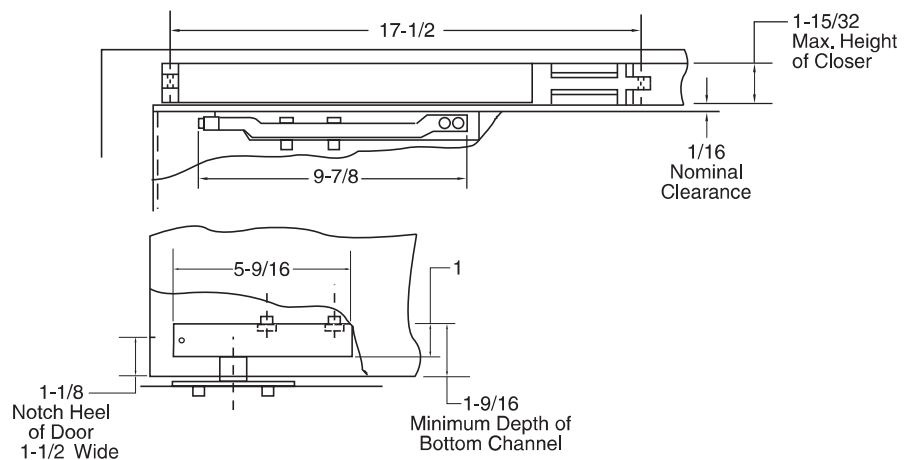
- ANSI C50552/CO5062
- Compliant to ANSI A156.4 standards

Models

- 800 should be used on aluminum doors and frames. Package includes closer body, arm and frame mounting clips 1639000 and bottom pivot 2183020. Frame size 1-3/4" x 4".
- M800 should be used on metal doors and frames. Package includes closer body, arm, cover plate, frame mounting channel 1929000* and bottom pivot 2183020. Frame size 2" x 5-1/2".
- MW800 should be used on wood doors and metal frames. Package includes closer body, arm, cover plate, frame mounting channel 1929000* and bottom pivot 2183020. Frame size 2" x 5-1/2".
- W800 should be used on wood doors and frames. Package includes closer body, arm, cover plate, frame mounting channel 1980910, and bottom pivot 2183020. Frame size 2" x 5-1/2".



TECHNICAL INFO



**Note that mounting channels must be welded into frames prior to shipment to job site.*

RIXSON®
ASSA ABLOY

HOW TO ORDER

M80 Model	6 Size	90A Hold Open	x 1/2" Ext Spdl Suffix	RH Hand	x 626 Finish
	6* 7* 8*	90A - Hold Open 105A - Hold Open 90N - Non-Hold Open 105N - Non-Hold Open	1/2" Extended Spindle	RH - Right Hand LH - Left Hand	
800 - Closer for Aluminum Door and Frames M800 - Closer for Metal Doors and Frames MW800 - Closer for Wood Doors and Metal Frames W800 - Closer for Wood Doors and Frames					All Arms Are 689 Sprayed Alum 690 Sprayed Dk Brz 691 Sprayed Lt Brz 693 Sprayed Black 696 Sprayed Brass Cover Plates 605 Bright Brass 606 Satin Brass 611 Bright Bronze 612 Satin Bronze 613 Dark Bronze 613E Dark Oxidized Satin Bronze - Equivalent 619 Satin Nickel 622 Flat Black 625 Bright Chrome 626 Satin Chrome BSP Black Suede Powder

*See chart below for door widths

SIZE

806, M806, MW806, W806

Exterior 2'6" (762mm)
Interior 3'0" x (914mm)

807, M807, MW807, W807

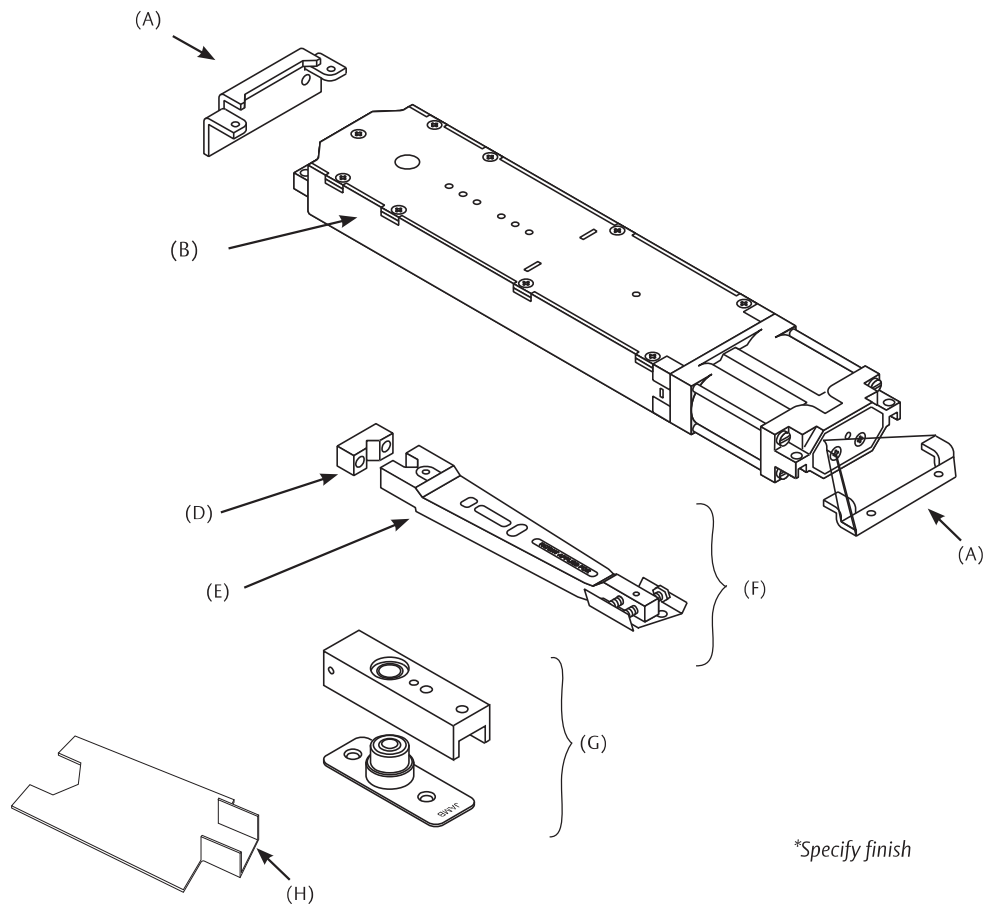
Exterior 3'0" (914mm)
Interior 3'3" (991mm)

808, M808, MW808, W808

Exterior 3'6" (1067mm)
Interior 3'8" (1118mm)

Standard door height = 8'





SCREW KITS

Bottom Pivot Screw Kit 107218

Arm Screw Kit 107055 (Includes arm end block)

Arm Block Screw 806018-PKG

(A) Attaching Bracket 1639000

(B) Closer Body (Specify Complete Model No. x LAP)

(D) Arm Block 808075-1

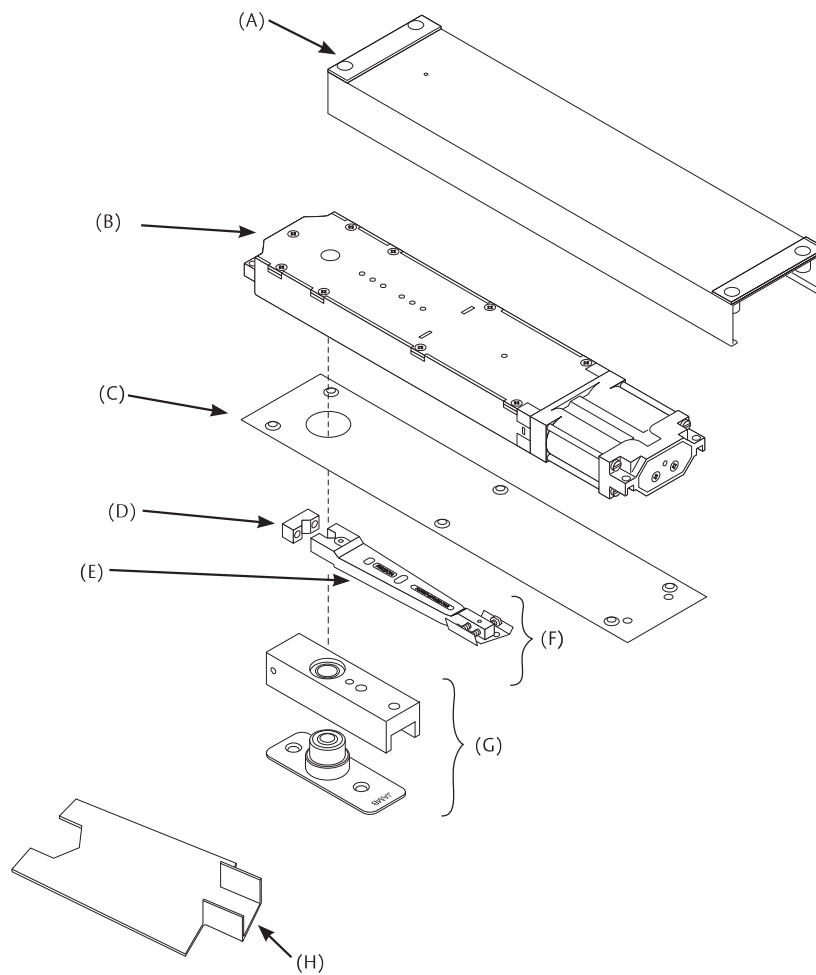
(E) Arm Assembly 808175

(F) Arm Package 8002020

(G) Bottom Pivot Package 2183020 (Includes H)

(H) Pivot Wrench 218007

RIXSON®
ASSA ABLOY



**Specify finish*

SCREW KITS

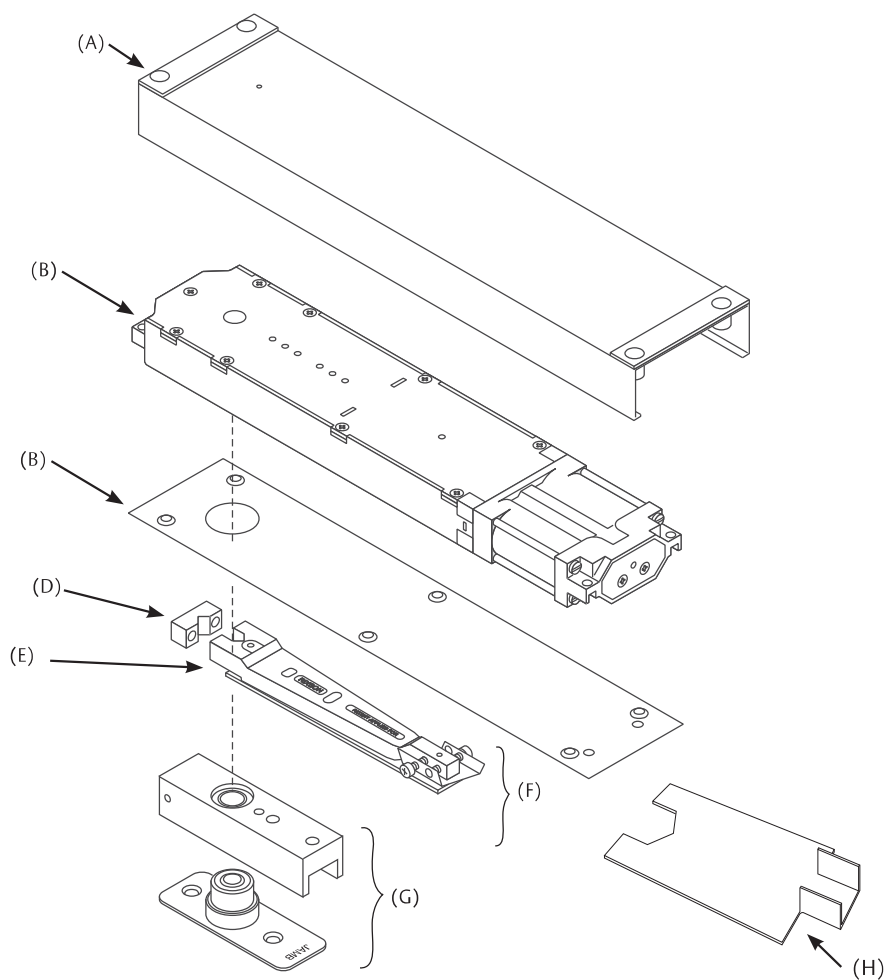
Bottom Pivot Screw Kit 107218

Arm Screw Kit 107055 (Includes arm end block)

Arm Block Screw 806018-PKG

Cover Plate Screw Kit 107006-*

- (A) Closer Mounting Channel 1929000
- (B) Closer Body (Specify Complete Model No. x LAP)
- (C) Cover Plate
700 Series, 7004000R* (RH), 7004000L* (LH)
800 Series, 8004000-*
- (D) Arm Block, 808075-1
- (E) Arm Assembly, 808175
- (F) Arm Package, 8002020
- (G) Bottom Pivot Package, 2183020 (Includes H)
- (H) Pivot Wrench, 218007



*Specify finish

SCREW KITS

Bottom Pivot Screw Kit 107218

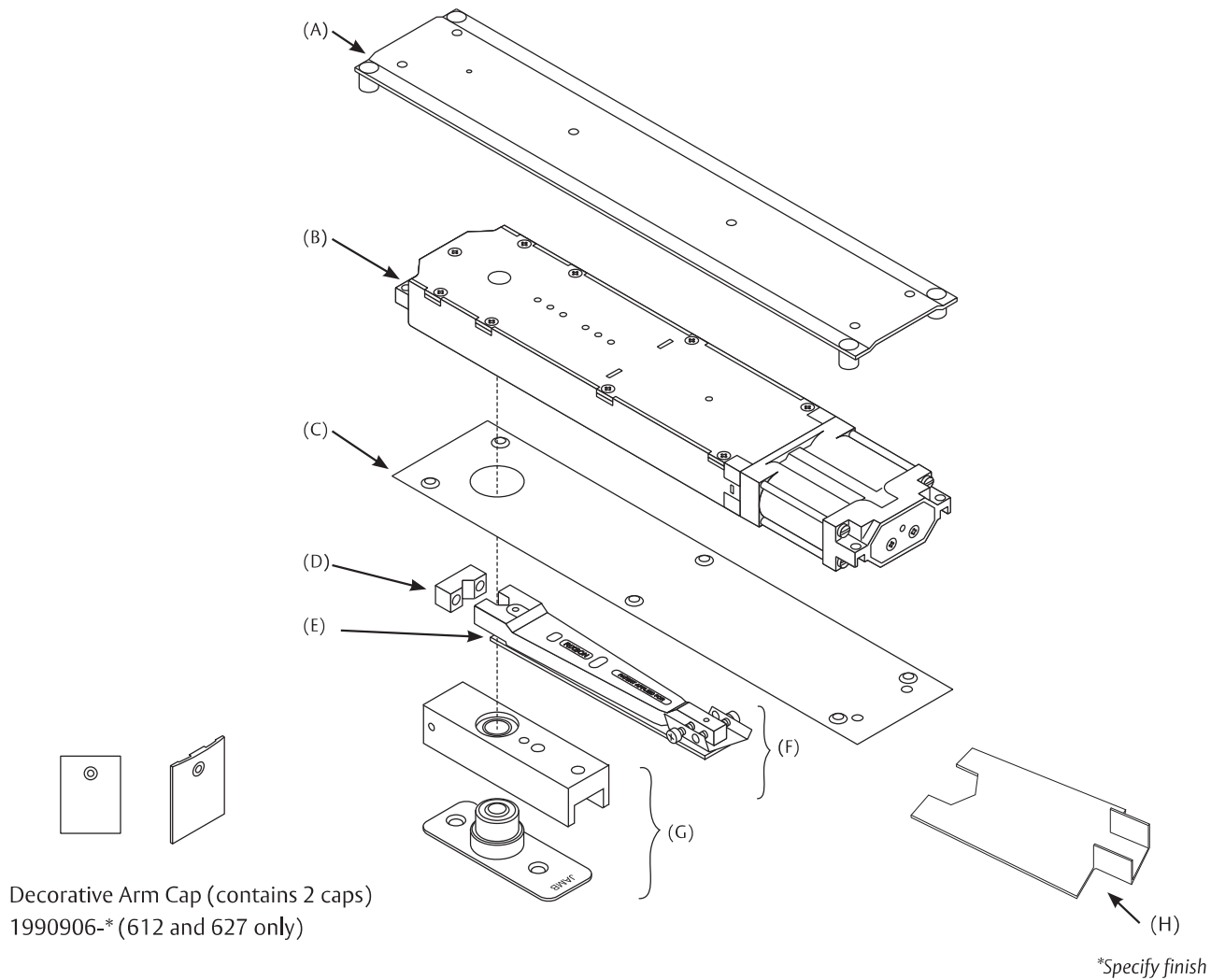
Arm Screw Kit 107055 (Includes arm end block)

Arm Block Screw 806018-PKG

Cover Plate Screw Kit 107006-*

- (A) Closer Mounting Channel 1929000
- (B) Closer Body (Specify Complete Model No. x LAP)
- (C) Cover Plate
700 Series, 7004000R* (RH), 7004000L* (LH),
800 Series, 8004000-*
- (D) Arm Block 808075-1
- (E) Arm Assembly 808174
- (F) Arm Package 8002021
- (G) Bottom Pivot Package 2183020 (Includes H)
- (H) Pivot Wrench 218007

RIXSON®
ASSA ABLOY



SCREW KITS

Bottom Pivot Screw Kit 107218

Arm Screw Kit 107055 (Includes arm end block)

Arm Block Screw 806018-PKG

Cover Plate Screw Kit 107006-*

- (A) Closer Mounting Channel 1980910
- (B) Closer Body (Specify Complete Model No. x LAP)
- (C) Cover Plate
7004000R* (RH),
7004000L* (LH)
- (D) Arm Block 808075-1
- (E) Arm Assembly 808174
- (F) Arm Package 8002021
- (G) Bottom Pivot Package 2183020 (Includes H)
- (H) Pivot Wrench 218007