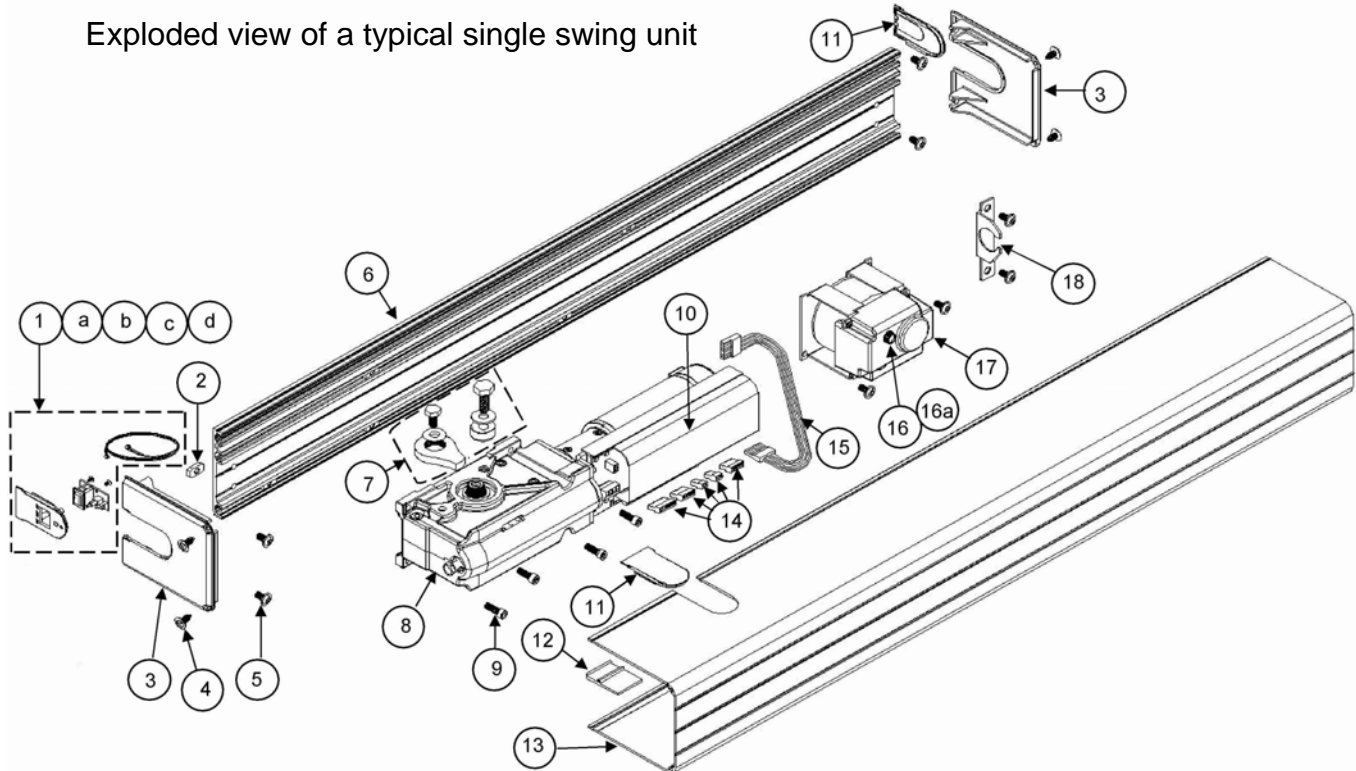
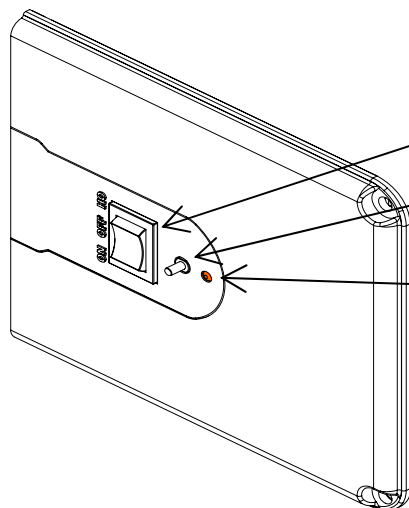


8000/8100 Series Swing Door Operator Installation Instructions

Exploded view of a typical single swing unit



ITEM	PART NUMBER	DESCRIPTION	ITEM	PART NUMBER	DESCRIPTION
1	4-80-0802	KIT, ROCKER SWITCH, CABLE, INSERT, & SCREWS	11	6-80-9003	INSERT, PLAIN, COVER & END CAP
2	4-51-1036	PLATE, NUT (1/4-20)	12	6-80-9002	INSERT, SHAFT CUTOUT, COVER
3	6-80-9001	END CAP, COVER	13	5-80-4003	COVER, 6100/8100 CL-DB
4	81-3114-0412-DB	SCREW, 8x1/2" Ph. PH SMS BL OXIDE	14	4-80-0801	KIT, ELECTRICAL CONNECTORS, J1 - J6
5	81-0017-2658	SCREW, 1/4-20X3/8" ALLEN BH BL OXIDE	15	9-80-0010	HARNESS, ENCODER
6	5-80-4001-MF	PLATE, OPERATOR MOUNTING, 6100/8100	16	9-99-1902	FUSE CAP
7	9-80-0103	MOUNTING SET, HARD STOP ADAPTOR	16a	9-99-1940	FUSE, 2.5 A, 5mm X 20mm
8	9-80-0101	DRIVE MODULE, SERIES 8000 OPERATOR	17	9-80-0102	POWER SUPPLY, 6100/8100
9	81-0014-2666	SCREW 1/4-20X3/4" ALLEN BH, BLK OXIDE	18	4-80-1001	BRACKET, CONDUIT ANCHOR
10	9-80-0108	CONTROL, SERIES 6100/8100 OPERATOR	19	9-80-0009	HARNESS, POWER SUPPLY TO CONTROL (not shown)



The Series 8000 Standard Rocker Switch Control Panel includes:

3 Position Rocker Switch - ON / OFF / OPEN

Pushbutton - To reset the operator, press and hold for 8 seconds

LED (red) - Normally off; flashing indicates either the unit is performing a calibration run, or an error has been encountered.

To clear an error, press & hold the pushbutton for approximately 8 seconds, or until the LED turns off.