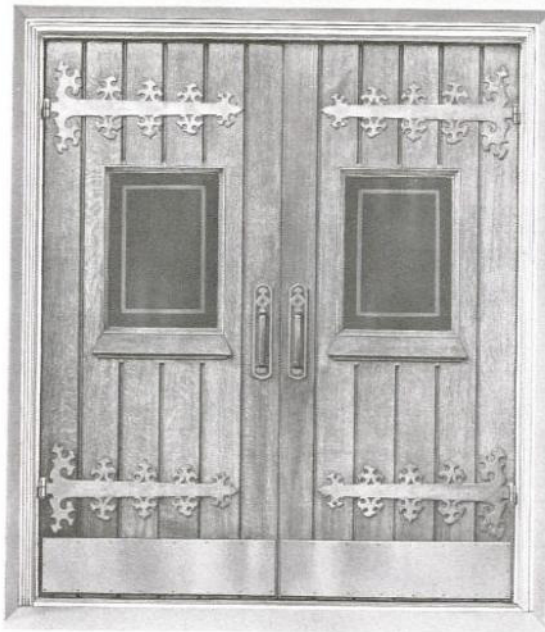


# Single Acting — Hinged with Hydraulic Back Check for Heavy Duty Interior and Exterior Doors



## DOR-O-MATIC 3600 SERIES



Hinges or Pivots Not furnished with closer. Intermediate Pivots Dor-O-Matic 019AC are recommended. Ball bearing butt hinges may also be used. Hinge width may be 4" minimum or 4½" maximum.

Bottom Arm and Slide Assembly No. 770A is used with dress plate installation. No. 780A Bottom Arm and Slide Assembly is used with threshold installation. Both are concealed. Bottom Arm has rust resistant finish with high impact, self-lubricating Bronze Slide Block in a stainless steel channel.

Cement Case No. 766A designed to hold door control firmly in position.

Federal Specification FF-H-121c Type 3522 Mod. I, II, III

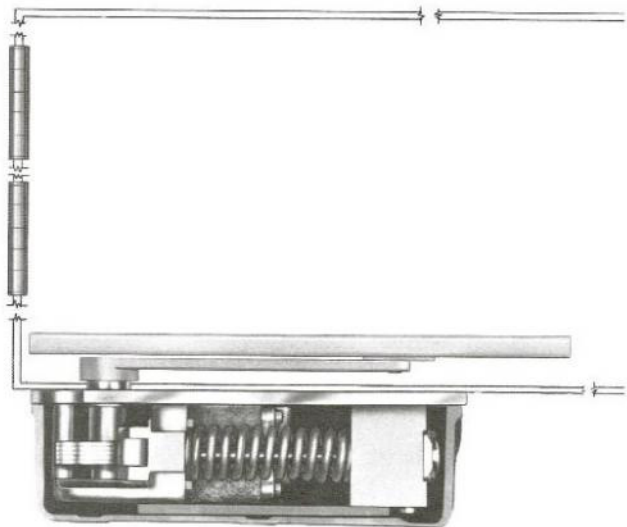
UL Listed Models 3610, 3630 without Hold Open for B, C, D, E Label Doors.

This concealed in the floor door control can be used with butt hinges or offset pivots. With two speed adjustable closing and built in adjustable back check, this unit can provide complete control of doors on installations where abuse is routine. Extended port caps available where closing adjustment thru the threshold is required.

Petroleum base hydraulic oil makes changes of adjustments of this control unnecessary in climates where temperature differences are not severe.

Door closer can be removed without taking down the door. Same closer can be used with threshold or dress plate installation. Arm for dress plate installation differs from arm used with threshold.

Door closer is designed to allow door to swing 5° beyond center insuring positive latching and contact between door and stop.



## SELECTOR CHART **Hydra-Cushion** Single Acting\* • Hinged • 3600 Series

DOOR SIZE MAX- IMUM	TYPE AND LOCATION OF DOOR	FOR SINGLE ACTING DOORS* HINGED						Shpg. Wt. Lbs.	THRESHOLDS†						PIVOTS		
		Specify Finish and Hand							Specify Finish, Hand, and Width of Door Opening Jamb to Jamb						Specify Finish and Hand		
		Federal Spec. FF-H-121c Type	130° Stop	105° Hold Open & Stop	105° Stop	90° Hold Open & Stop	90° Stop		4" Wide	5" Wide	7" Wide	7" Wide Mitered Ends	7¾" Wide	4" Wide x 7" Offset	5" Wide x 7¾" Offset	Federal Spec. FF-H-121c, 3525	
3'2"	Entrance, Vestibule	3522 I Mod.		3600D	3610D	3620D	3630D	40			40Ax736		40Ax836				
3'8"	Interior																
3'8"	Entrance, Vestibule	3522 II Mod.		3600E	3610E	3620E	3630E	40			40Ax736		40Ax836				
4'0"	Interior																
4'0"	Entrance, Vestibule	3522 III Mod.		3600F	3610F	3620F	3630F	40			40Ax736		40Ax836				

\* Controls shipped with dress plate cement case, bottom arm and slide assembly No. 770A.

For threshold application specify No. 780A bottom arm and slide assembly.

† No. 2 stop strip available upon request.

Extended port caps—to order or specify use letter D suffix with standard threshold numbers.

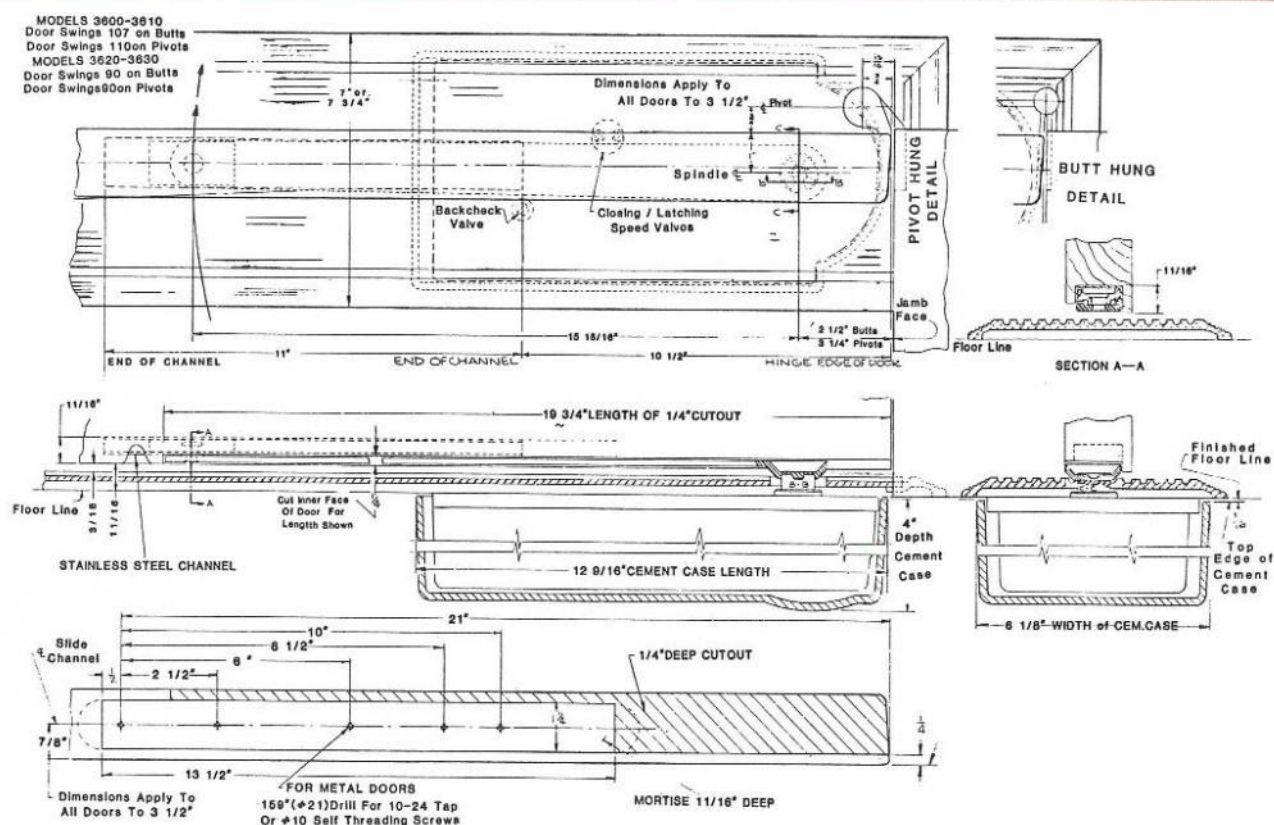
## 3600 SERIES

WHEN SPECIFYING OR ORDERING ALWAYS

1. Specify door size and type.
2. Select correct door control by model number for application.
3. Advise hand of single acting units.
4. Advise door and frame material so proper screws and accessories are furnished.
5. Advise door thickness.
6. Specify finish.
7. Specify intermediate pivots or surface applied pivots, handed, if other than standard pivots are required.
8. Advise if thresholds are required. (If thresholds are specified, order floor-type door controls less floor dress plates.)
9. Advise if spindle longer than standard length is required.

### TYPICAL ORDER

Quantity	Hand	Model No.	Finish	Special Instructions	Door Size	Door		Jamb	
						Metal	Wood	Metal	Wood
8	LH	3600D	US10		3'6" x 7'0" x 1¾"	M		M	
12	RH	3620F	US9	less dress plate, 780A bottom arm and slide assembly for threshold installation	4'0" x 8'0" x 2"		W		W



**Caution:** Request latest template for each installation; templates are revised from time-to-time when necessary.

## SUGGESTED SPECIFICATION – Hydra-Cushion 3600 SERIES

Concealed in the floor closer to be Federal Specification 3522 Modified, size to conform to manufacturers recommendation for door size and location.

Door to be hung on Offset Pivots or Butt Hinges (not furnished with closer) opening 90° or 105°.

Closer to be equipped with compression springs, two adjustments to control the closing and latching speed.

Furnish integral leveling screws to level door control in cement case. Spindle height to be the same for threshold or dress plate installation using appropriate arm.

Spindle Bearings, both top and bottom to be Torrington Needle Bearings for maximum radial thrust load.

No overhead controls, wall stop or bumpers will be required.