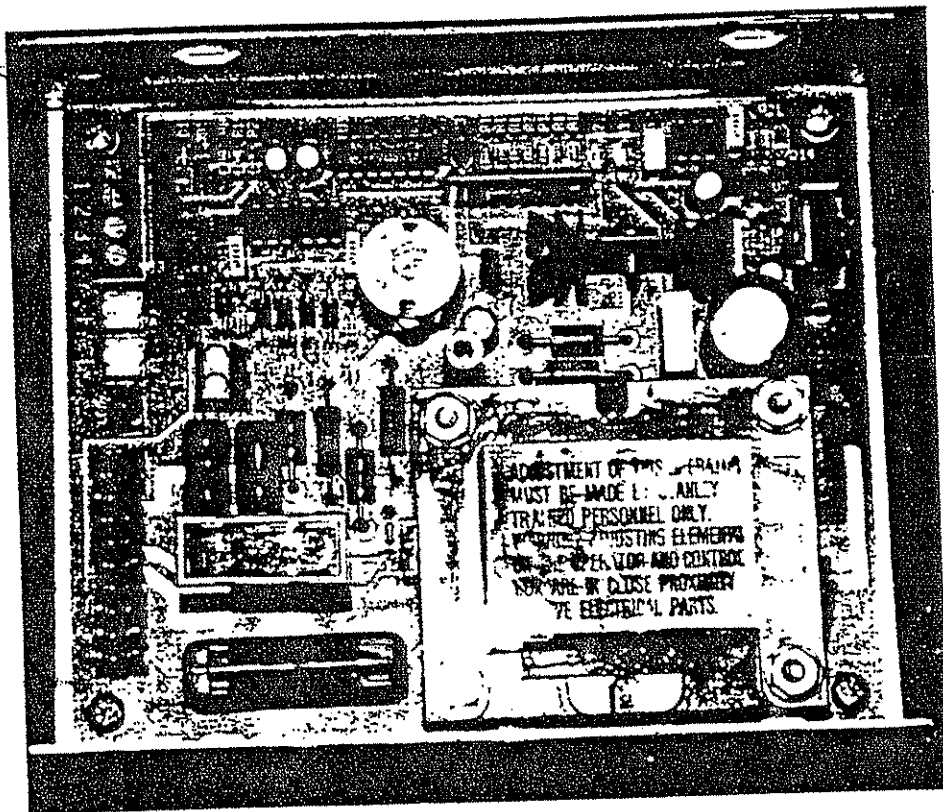




# POWER CLOSE MODULE MAGIC-SWING



Installation & Tune-In Manual

Disconnect motor cable from the operator  
Insert the 3-pin connector "A" to the motor connector left free at the operator (switch box).

- \* Connect together the 3-pos. cap "B" and the motor cable.
- \* Connect the 120 VAC line using the harness "C".

agic-Swing control box connections or are not changed in any way when the close box is installed.

T = Adjusts time delay between the start of door closing and the start of the power closing mode. Rotate CCW to increase time delay.

L = Adjusts the closing force applied to the door. Rotate CCW to increase level.

With slide switch in top position, power close may be cancelled by pushing the door manually in open direction.

Red LED lights when the power close mode is switched on.

Add jumper J2 when installing to a standard force Magic-Swing operator.

REMOTE POWER CLOSE  
CANCEL SWITCH (optional)

12 VAC

TRANSFORMER

WIRE HARNESS  
MATED BY TWO  
MATE-N-LOCK  
CABLE CONTACTS.

OPERATOR

RED

BLUE

OTOR

WHITE

BLACK

GREEN

Red

Blue

Blue

White

Green

Green

Black

White

"C" — POWER LINE

GREEN/YELLOW  
BLACK  
WHITE

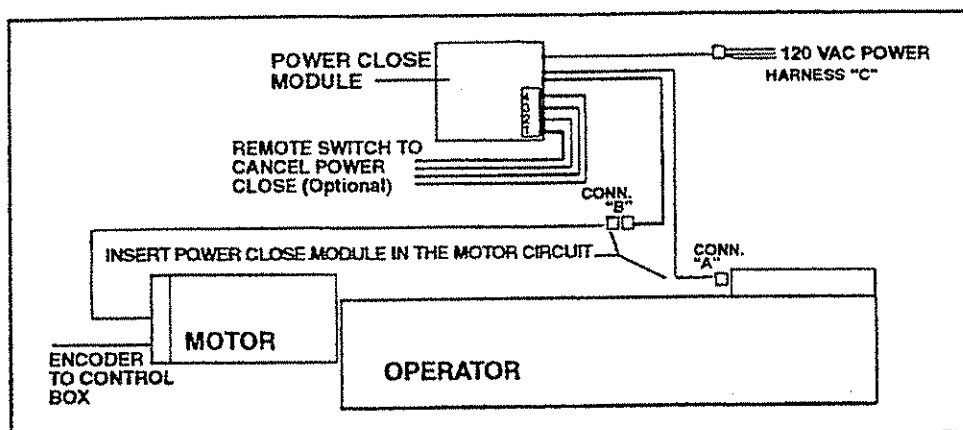
GREEN/YELLOW  
BROWN  
BLUE

— 120 VAC PWR LINE CONNECT  
BLACK = LINE  
WHITE = NEUTRAL  
G/Y = GROUND

POWER LINE FUSE: 1 AMP SLOW

**POWER CLOSE MODULE  
FOR MAGIC-SWING OPERATOR**

## LOCATION OF POWER CLOSE MODULE



The power close module will work with any Magic-Swing operator (standard and light spring). The control inserts in the motor circuit and derives its signals from the motor voltage. As soon as the door starts closing, the internal timer is started and after a preset time delay, the motor is switched to an adjustable low voltage supply (0 . . . . . 12 VDC) having the proper polarity to develop a motor torque in the direction of door closing. The red LED indicates power close is active. It is recommended to set the time so that the door is already in the closing check zone when the additional closing force is applied (the closing check slowdown action is not available in the power close mode).

### OPTIONAL

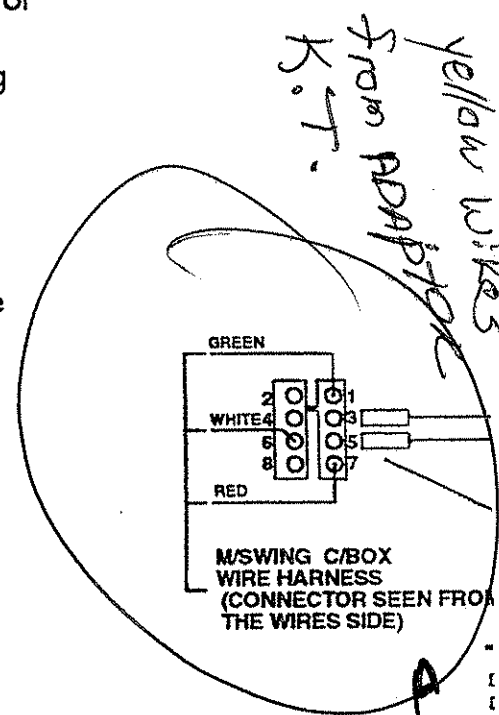
A switch may be used to cancel the power close mode from a remote location. To have this function enable, 12 VAC is required from an external source (may be derived from the Magic-Swing control box terminals 4 & 5)

### OPTIONAL

To have the power close cancelled in breakout, a signal must be provided from a limit switch. To utilize an unused open check limit switch:

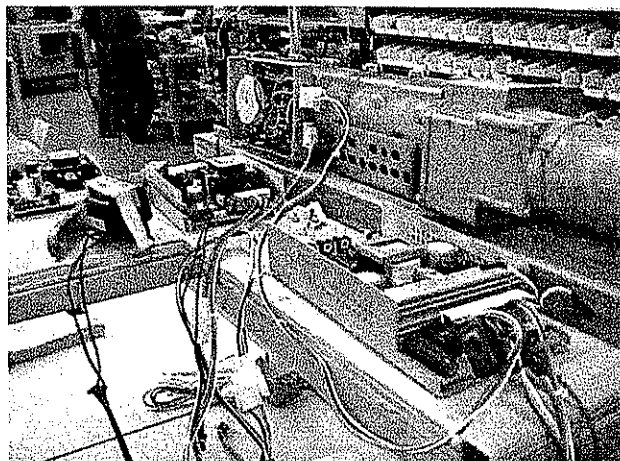
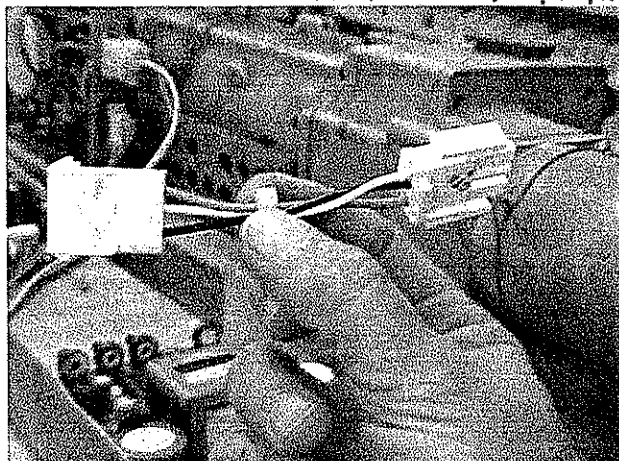
- \* Insert two receptacle contacts from the two-wire harness provided to pos. 3 & 5 of the Magic-Swing control box harness 8-pin connector. Wire the other ends to screw terminals 3 & 4 on power close module.
- \* Connect 12 VAC to screw terminals 1 & 2 (may be derived from the Magic-Swing control box)
- \* Adjust the limit switch to activate at breakout.

This function possible only with the microprocessor type Magic-Swing control box which does not make use of "OCK" switch.

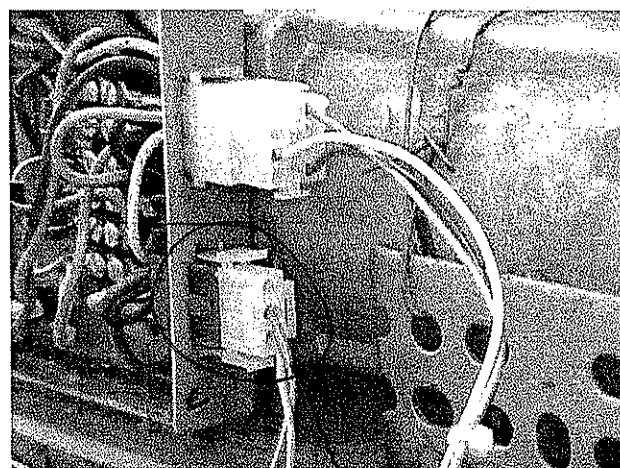
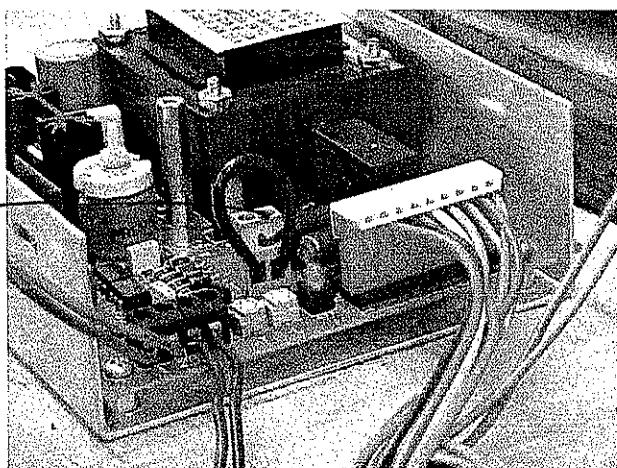


B

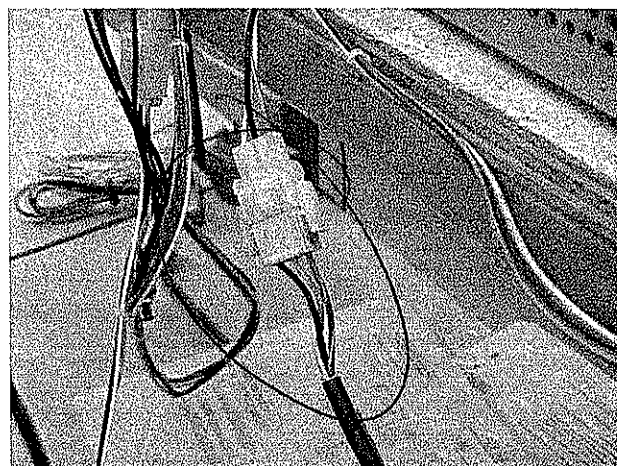
Switch from L to R Hand



Jumper



Connect ADAPTER harness  
to bottom motor harness.



Power Cord