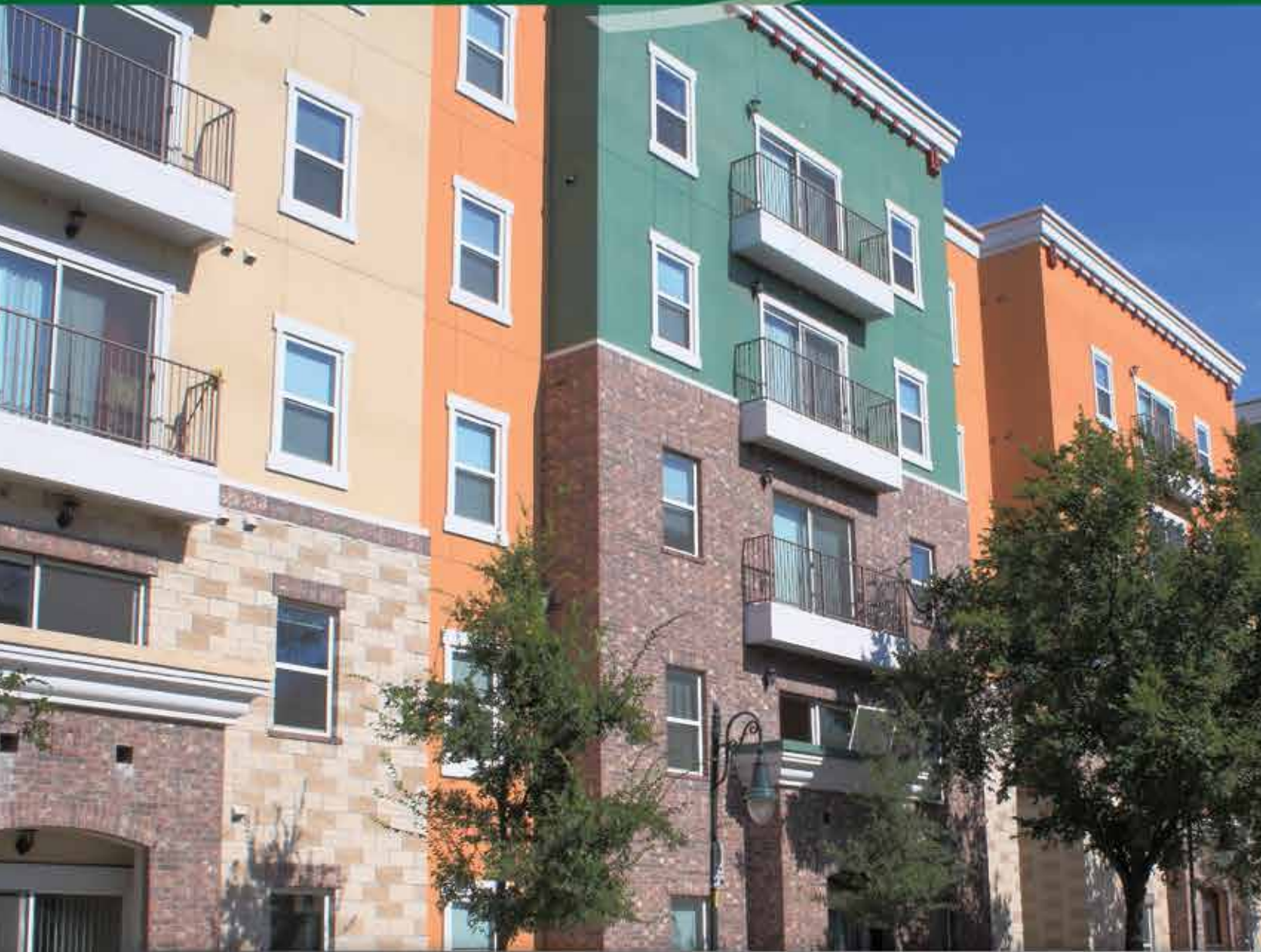




Pamex



Locks and Builders Hardware





Table of Contents

1~9	Commercial Hardware
1	Hinges
2	Door Closers
3	Exit Devices
4	Electric Hardware
5	Mortise Locks
6~7	Commercial Locksets
8	Interconnected Locksets
9	Commercial Door Hardware
10~11	Door Hardware
12~18	Residential Locks
12~13	Handlesets
14	Contemporary Series
15~16	Lever sets
17	Knobsets
18	Deadbolts & Electronic Keypad Locks
19~26	Bathroom Accessories
19	Solano / Vina
20	Eureka / La Quinta
21	Charleston / Ventura
22	Carmel / Seal Beach
23	Estes / Campbell
24	Corona / Edison
25	Recessed Fixtures, Shower Rods, Flanges and Grab Bars
26	Hospitality Accessories
27~28	Finish Charts

Plain Bearing



4" x 4", 1/4" radius round corner

2 Ball Bearing



4" x 4", 1/4" radius round corner

Spring Hinge



4" x 4", 1/4" radius round corner



4" x 4", square corner
4.5" x 4.5", square corner



4" x 4", square corner
4.5" x 4.5", square corner



4" x 4", square corner
4.5" x 4.5", square corner



Finish Availability

US Code	10B	15	26D	32D	P
BHMA code	640	646	652	630	600

RESIDENTIAL HINGES

Plain Bearing



4" x 4", 5/8" radius round corner

2 Ball Bearing



4" x 4", 5/8" radius round corner

Spring Hinge



4" x 4", 5/8" radius round corner



Finish Availability

US Code	10B	15	26D
BHMA code	640	646	652



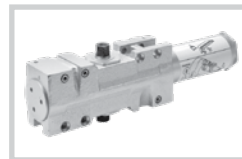
DOOR CLOSERS



GC4400 Series



- Full feature iron cast closers
- Multi-size power adjustable
- Full plastic cover included
- ANSI A156.4 Grade 1
- Optional delay action
- Horizontal mounting holes dimension: 11"



GC5900 Series



- Full feature closers
- Multi-size power adjustable
- Full plastic cover included
- ANSI A156.4 Grade 1
- Optional delay action
- Horizontal mounting holes dimension: 11-1/8"



GC6800 Series



- Slim Design closers
- Multi-size power adjustable
- Full plastic cover included
- ANSI A156.4 Grade 1
- Optional delay action
- Horizontal mounting holes dimension: 12"



GC8700 Series



- Multi-size power adjustable
- ANSI A156.4 Grade 1
- Universal installation
- Optional barrier free function
- Horizontal mounting holes dimension: 9-1/16"



GC800 Series

- Dual valve adjustable closing and latching speed
- Standard sized closer
- ANSI A156.4 Grade 2
- Universal installation
(Not BHMA Certified)



EXIT DEVICES



E9000 / EF9000 Series

- ANSI A156.3 Grade 1
- Heavy duty exit devices
- Surface mount / Concealed
- Vertical rod and rim type
- 3 hour fire rated devices available



E9100 / EF9100 Series



- ANSI A156.3 Grade 1
- Heavy duty exit devices
- Surface mount / Concealed
- Vertical rod and rim type
- 3 hour fire rated devices available



E7000 / EF7000 Series

- ANSI A156.3 Grade 1
- Heavy duty exit devices
- Surface mount
- Vertical rod and rim type
- 3 hour fire rated devices available



E5000 / EF5000 Series

- ANSI A156.3 Grade 1
- Heavy duty exit devices
- Surface mount
- Vertical rod and rim type
- 1-1/2 hour fire rated devices available



E8000 / EF8000 Series

- ANSI A156.3 Grade 2
- Standard duty exit devices
- Surface mount
- Vertical rod and rim type
- 1-1/2 hour fire rated devices available



E2000 Series

- ANSI A156.3 Grade 2
- Cross bar exit devices
- Surface mount



Mullion



ELECTRIC HARDWARE

Electric Strikes



100 Series

- Dual Voltage 300/150 mA @ 12/24 VDC
- Fail-Secure, reversible for Fail-Safe operation
- For latch throw up to 5/8" with 1/8" door gap
- ANSI A156.31 compliant Grade 2



200 Series



- Dual Voltage 280/140 mA @ 12/24 VDC
- Fail-Secure, reversible for Fail-Safe operation
- For latch throw up to 3/4" with 1/8" door gap
- ANSI A156.31 compliant Grade 2, UL Listed
- UL 10C, 3 hour fire-rated (fail-secure only)



400 Series



- 0.51 Amp @ 12 VDC or 0.25 Amp @ 24 VDC
- Fail-Secure, also available in Fail-Safe
- For latch throw up to 3/4" with 1/8" door gap
- ANSI A156.31 compliant Grade 1
- UL 10C, 3 hour fire-rated (fail-secure only)
- UL 1034, Burglary-resistant rated

Magnetic Door Holders



Recess Mount



Surface Mount



- Dual voltage AC or DC inputs of 12&24V or 24&120V
- Low power consumption of 40mA
- Meets ANSI A156.15

Power Supply



EPS-1



- Input: 115VAC 60Hz, 0.6 Amp
- Output: Filtered and electronically regulated 1 Amp @ 12/24VDC (field selectable)
- Battery Charger: 150mA @ 12VDC



EPS-2



- Input: 115VAC @ 800mA, 50/60 Hz, Fused
- Output: Filtered and electronically regulated 2 Amp @ 12/24VDC (field selectable)
- Battery Charger: 250mA @ 13.5 or 27VDC

Power Transfer Devices



Power Transfer Hinge



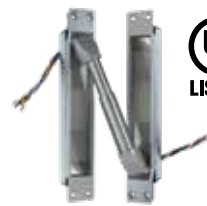
Power Transfer Loop
EPT-L2



Power Transfer Loop
EPT-L3



Power Transfer EPT-L5



Power Transfer
Heavy Duty Mortise
EPT-M10



MS SERIES

Grade 1 Heavy Duty Mortise Locks
ANSI BHMA A156.13



Features:

- Full reversible design.
- No exposed mounting screws on outside and inside trims.
- Can retrofit American Schlage L9000 Series mortise lock bodies.
- Outside lever is Clutch Freewheeling design.



Sectional Lever Trim



YT Lever



YM Lever



YH Lever



COMMERCIAL LOCKSETS



Pendleton

- ANSI A156.2 Grade 1
- Heavy duty cylindrical leversets
- Meets ADA requirements
- Push button grip
- I/C core lock available
- 3-hour fire rated 2-3/4" latch standard



Annapolis

- ANSI A156.2 Grade 1
- Heavy duty cylindrical leversets
- Meets ADA requirements
- Push button grip
- I/C core lock available
- 3-hour fire rated 2-3/4" latch standard



Alameda

- ANSI A156.2 Grade 1
- Heavy duty cylindrical leversets
- Meets ADA requirements
- Push button grip
- I/C core lock available
- 3-hour fire rated 2-3/4" latch standard



FDP Deadbolt

- ANSI A156.36 Grade 1
- Heavy duty deadbolt
- Meets ADA requirements
- I/C core lock available
- 3-hour fire rated 2-3/4" latch standard



COMMERCIAL LOCKSETS



Princeton



- ANSI A156.2 Grade 2
- Heavy duty cylindrical leversets
- Meets ADA requirements
- Push button grip
- I/C core lock available
- 3-hour fire rated 2-3/4" latch standard



Davidson



- ANSI A156.2 Grade 2
- Heavy duty cylindrical leversets
- Meets ADA requirements
- Push button grip
- I/C core lock available
- 3-hour fire rated 2-3/4" latch standard



Cambridge



- ANSI A156.2 Grade 2
- Standard duty tubular leversets
- Meets ADA requirements
- Turn piece /push button grip
- I/C core lock available
- 3-hour fire rated adjustable latch standard



Dallas



- ANSI A156.2 Grade 2
- Standard duty tubular leversets
- Meets ADA requirements
- Turn piece /push button grip
- 3-hour fire rated adjustable latch standard



Sierra

- ANSI A156.2 Grade 2
- Standard duty tubular knobsets
- Quick release function
- Turn piece /push button grip
- 3-hour fire rated adjustable latch standard



FD7 Deadbolt



- ANSI A156.36 Grade 2
- Heavy duty deadbolt
- Meets ADA requirements
- I/C core lock available
- 3-hour fire rated adjustable latch standard



FD8 Deadbolt



- ANSI A156.36 Grade 2
- Heavy duty deadbolt
- Meets ADA requirements
- Adjustable latch standard (UL 3-hour fire rated latch available)





INTERCONNECTED LOCKSETS



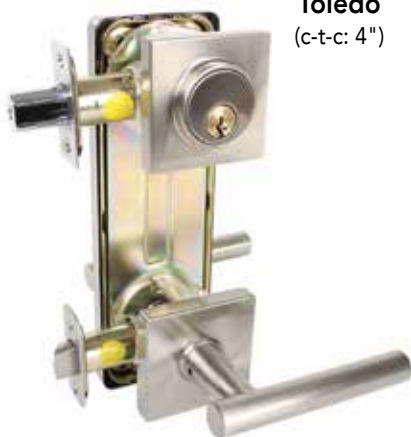
Toledo
(c-t-c: 4")



Kenton
(c-t-c: 4")



Sterling
(c-t-c: 4")



Mirage
(c-t-c: 5 1/2")



Tacoma
(c-t-c: 5 1/2")



Ontario
(c-t-c: 5 1/2")

- ANSI A156.12 Grade 2
- Tubular structure
- Meets ADA requirements
- I/C core deadbolt available

- Removable cylinder deadbolt available
- 3-hour fire rated adjustable latch standard
- 4" & 5-1/2" center-to-center available



Concord
(c-t-c: 4")



Daytona
(c-t-c: 4")



Hampton
(c-t-c: 4")



Westfield
(c-t-c: 5 1/2")



Fremont
(c-t-c: 5 1/2")



Newport
(c-t-c: 5 1/2")

COMMERCIAL DOOR HARDWARE



Constant Flush Bolt
(Metal Door)



Constant Flush Bolt
(Wood Door)



Surface Overhead Stop



Concealed Overhead Stop



Auto Flush Bolt
(Metal Door)



Auto Flush Bolt
(Wood Door)



Manual Flush Bolt
(Metal Door)



Manual Flush Bolt
(Wood Door)



Latch Guard Protector
(Universal)



Latch Guard Protector
(for 3-3/4" Rose)



Privacy Door Latch



Bumper Door Guard



Pull / Push Plate



Kick Plate



Armor Plate



Roller Bumper



Concave Wall Stop



Convex Wall Stop



Dome Stop - High Profile



Dome Stop - Low Profile



Goose Neck Floor Stop



Floor Stop



Cylindrical Floor Stop



Dust Proof Strike



DOOR HARDWARE



Barn Door Hardware

1000 Series

2000 Series



Surface Mount Bent Strap Wheel



Top Mount Single Wheel



Surface Mount Strap Wheel



Top Mount Single Wheel



160° Viewer



180° Viewer



UL 160° Viewer



UL 180° Viewer



4" Knocker with Viewer



5-1/2" Knocker with Viewer



6" Solid Brass Knocker



Solid Brass Knocker with Viewer



3-1/8" Cast Stop



3" Spring Stop



3-1/8" Spring Stop



3" Rigid Stop



Heavy Duty Hinge Pin Stop



Deluxe Hinge Pin Stop



Door Security Hinge Pin Stop



Adjustable Hinge Pin Stop



Residential Door Saver II Hinge Pin



Bi-Fold Knob



HD Handrail Bracket



Jumbo Handrail Bracket

DOOR HARDWARE



7" Single Route Flush Bolt



6" Flush Bolt



3", 4" & 6" Surface Bolt



Finger Pull



Spring Crash Chain



Adj. Ball Catch



Roller Catch



Heavy Duty Roller Catch



Pocket Door Lock



Pocket Door Lock



Metal Pole Socket



4" Kick Down Door Holder



5" Kick Down Door Holder



Shelf & Rod Support Bracket
(Single Leaf)



Shelf & Rod Support Bracket
(Heavy Duty Adj.)



Shelf & Rod Support Bracket
(Heavy Duty Fixed)



Shelf & Rod Support Bracket
(Heavy Duty Fixed - No Hook)



House Number



House Letter



Heavy Duty House Number



Heavy Duty House Letter



HANDLESETS



Pamex handlesets offer the benefit of quality design and workmanship at affordable prices. Without any sacrifice of quality, these value-engineered locksets are built to last. Pamex handlesets are forged of solid brass and ergonomically designed with solid handles for a comfortable grip.



Tuscany



Catalina



Alhambra



Granada



Troy



Lexington



Victorian



Springfield

Pamex handlesets will bring elegance and style to the exterior of any home, to ensure long life security and richness. Your home will be flattered by the delicate beauty of our solid brass handlesets.

Interconnected Trim



- Naples lever
- Finish available: US15, 10B, 11P
- Specify LH/RH



- Newberry lever
- Finish available: US15, 10B
- Specify LH/RH

Other Options Available



CONTEMPORARY SERIES



Mira



Tahoe



Onyx



FDK Deadbolt



FDS Deadbolt

Pamex is proud to announce the additions of the new contemporary hardware and bath accessories to our lines. Turn the exceptional into extraordinary with this exquisite collection of lever styles. The sleek, clean lines of contemporary styling are sure to meet your expectations. These styles look amazing when used in combination with today's fashionable glazed finishes.



Available in a wide array of attractive styles, popular finishes and practical functions, our leversets offer the best quality features you can expect from PAMEX.



New



Alto



Naples



Florence



Newberry



Denver



Viano



LEVERSETS



Milano



Savannah



Calypso



Classic



Olympic

Our leversets provide the detail final touch to traditional and contemporary designs.



The knobsets, with their simple charm and varying designs, provide home security with pleasantness and practicality.



Baron



Belle



Chester



Saturn

DEADBOLTS & ELECTRONIC LOCKS



Single Cylinder Deadbolt



Double Cylinder Deadbolt



One-sided Deadbolt W/ Cover



One-sided Deadbolt

ELECTRONIC KEYPAD LOCKS



FKL Series

- Fits standard door prep.
- Easy installation. No wiring needed.
- Reversible structure.
- Easy programing. 4-6 digit user code.
- Up to 100 user codes.
- Customizable auto-relock time.
- Illuminated keypad.
- Back-up key cylinder override.



FKD Series

- Fits standard door prep.
- Easy installation. No wiring needed.
- Automatic bolt direction determination.
- Easy programing. 4-6 digit user code.
- Up to 10 user codes.
- Optional auto-locking function.
- Illuminated keypad.
- Back-up key cylinder override.

SOLANO COLLECTION



Cool, sleek sophistication is represented all over this design. The Solano Collection brings a soft modern sensibility to your home.



Single Robe Hook



European-style
Paper Holder



Paper Holder



Straight Post Paper Holder



Towel Ring



Towel Bar Set

VINA COLLECTION

Add stylish charm to your bathroom with Vina Collection. Its clean lines and square base help to achieve the look of contemporary and fashionable design.



Single Robe Hook



European-style
Paper Holder



Paper Holder



Straight Post Paper Holder



Towel Ring



Towel Bar Set

EUREKA COLLECTION



Its contemporary profiling has a triple step waterfall edge creating a unique and alluring décor. Eureka Collection achieves a harmony of form, material and presentation with refinement.



Double Robe Hook



European-style
Paper Holder



Paper Holder



Towel Ring



Tumbler Holder



Soap Dish



Towel Bar Set

LA QUINTA COLLECTION

Our most decorative and unique collection, La Quinta, features a stunningly beautiful rope inlay design to personalize any bathroom.



Double Robe Hook



European-style
Paper Holder



Paper Holder



Towel Ring



Toothbrush/
Tumbler Holder



Soap Dish



Towel Bar Set

CHARLESTON COLLECTION



Any bathroom will be flattered by the exquisite beauty of the Charleston Collection which will bring any home an air of sophistication.



Double Robe Hook



European-style
Paper Holder



Paper Holder



Towel Ring



Towel Bar Set

VENTURA COLLECTION



The double waterfall sculptured edge gives Ventura Collection a transitional styling advantage. Functional craftsmanship and lines are reflected in this fine collection.



Double Robe Hook



European-style
Paper Holder



Paper Holder



Towel Ring



Toothbrush /
Tumbler Holder



Soap Dish



Towel Bar Set

CARMEL COLLECTION



Traditional and contemporary décor schemes can be achieved by its simple and practical appearance.



Double Robe Hook



European-style Paper Holder



Paper Holder



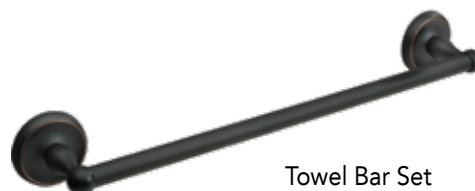
Towel Ring



Tumbler Holder



Soap Dish



Towel Bar Set

SEAL BEACH COLLECTION

This smooth post offers visually limitless options for your bathroom décor and is living proof that beauty and practicality can coexist.



Single Robe Hook



European-style Paper Holder



Paper Holder



Towel Ring



Toothbrush / Tumbler Holder



Soap Dish



Towel Bar Set

ESTES COLLECTION



The Estes Collection with its timeless and classic design adds a soft yet sophisticated look to your bathroom while enhancing any decor.



Double Robe Hook



European-style
Paper Holder



Paper Holder



Towel Ring



Towel Bar Set

CAMPBELL COLLECTION



Simple styling and quality expresses the look of Campbell. Its square base design and attention to detail complements any styling scheme.



Double Robe Hook



Paper Holder



Towel Ring



Toothbrush /
Tumbler Holder



Soap Dish



Towel Bar Set



CORONA COLLECTION



Slightly radiused corners make Corona a piece of crafted warmth and beauty.



Double Robe Hook



Paper Holder



Towel Ring



Toothbrush /
Tumbler Holder



Soap Dish



Towel Bar Set

EDISON COLLECTION

Easy installation with exposed screws makes Edison the best solution for economical projects.



Double Robe Hook



Paper Holder



Towel Ring



Toothbrush /
Tumbler Holder



Soap Dish



Towel Bar Set

RECESSED FIXTURES, SHOWER RODS, FLANGES & GRAB BARS



Deep Recessed
Paper Holder



Shallow Recessed
Paper Holder



Deep Recessed
Soap Holder & Grab



Shallow Recessed
Soap Holder & Grab



Shower Rod



ABS Plastic Adjustable
Flange Set



Zinc Adjustable
Flange Set



Zinc Exposed
Screw Flange Set



Stainless Steel Grab Bar
(Concealed Screws)



Stainless Steel Grab Bar
(Peened Finish)



Stainless Steel Grab Bar
(Exposed Screws)



Swing Up Grab Bar
(Peened Finish)



Spacious Shower Rod



HOSPITALITY ACCESSORIES



Pamex's hospitality accessories are suitable for any hotel, hospital and commercial projects. With the quality and price, we can offer you the best value available in the marketplace today.



Towel Shelf with Bar



Recessed Tissue Dispenser



Retractable Clothes Line



Recessed Extra Paper Holder



Twin Recessed Paper Holder



Surface Mount Twin Paper Holder



Fixed Curved Shower Rod

DOOR LOCKS FINISH CHART



US10B / 613
Oil Rubbed Bronze



US26 / 625
Polished Chrome



US32D / 630
Satin Stainless Steel



US3 / 605
Polished Brass



US5 / 609
Antique Brass



US19 / 622
Matte Black



US15A / 620
Antique Nickel



US11P
Venetian Bronze



US15 / 619
Satin Nickel



US26D / 626
Satin Chrome

US CODE	3	5	10B	11P	15	15A	19	26	26D	32D	L03
BHMA	605	609	613		619	620	622	625	626	630	505
HANDLESETS											
Alhambra				•	•						•
Catalina	•		•		•	•					
Granada				•	•						•
Lexington	•	•	•	•	•	•	•	•			•
Springfield	•	•			•						
Troy			•	•	•		•	•			
Tuscany			•	•	•						
Victorian	•				•						
LEVERSETS											
Alto					•		•	•			
Calypso	•	•			•						
Denver	•		•		•						
Florence	•	•			•						
Milano	•	•		•	•						
Mira					•		•	•			
Naples	•		•	•	•	•	•	•			
Newberry	•		•		•	•					
Olympic	•	•			•			•	•		
Onyx					•		•	•			
Savannah	•	•			•						
Tahoe					•		•	•			
Viano	•		•		•	•					
KNOBSETS											
Baron	•	•	•	•	•	•	•			•	
Belle	•	•								•	
Chester	•		•	•	•						
Saturn	•	•	•		•	•		•		•	•
DEADBOLTS											
FD2	•	•	•	•	•	•	•	•	•	•	
FD3	•	•	•	•	•	•	•	•		•	•
FDK/FDS					•		•	•			



DOOR LOCKS FINISH CHART

US CODE	3	5	10B	11P	15	15A	19	26	26D	32D
BHMA	605	609	613		619	620	622	625	626	630
COMMERCIAL LOCKS										
Alameda			•		•				•	
Annapolis			•		•				•	
Cambridge	•	•	•		•				•	
Concord / Westfield			•		•				•	
Dallas			•		•				•	
Daytona / Fremont			•		•				•	
Davidson			•		•				•	
Kenton / Tacoma					•		•	•		
Montclair			•		•				•	
Newport / Hampton			•		•					
Pendleton			•		•				•	
Princeton	•	•	•		•				•	
Sierra	•	•								•
Sterling / Ontario					•		•	•		
Toledo / Mirage					•		•	•		
FDP Deadbolt			•		•				•	
FD7 Deadbolt	•	•	•		•				•	•
FD8 Deadbolt			•		•				•	•

BATHROOM ACCESSORIES FINISH CHART



US11P

Venetian Bronze



US12P
713

Dark Bronze



US19
631

Matte Black



US26
625

Chrome



US3
605

Polished Brass



US26/3
625/605

Chrome/Brass



US15
619

Satin Nickel



US15/3
619/605

Nickel/Brass

US CODE	26	3	26/3	15	15/3	12P	11P	19	15A
BHMA	625	605	625/ 605	619	619/ 605	716		622	620
	Chrome	Polished Brass	Chrome/ Brass	Satin Nickel	Nickel/ Brass	Dark Bronze	Venetian Bronze	Matte Black	Antique Nickel
Solano / Vina	•			•				•	
Eureka / La Quinta	•	•	•	•	•				
Charleston	•			•			•	•	
Ventura	•	•	•	•	•	•	•	•	•
Carmel	•	•	•	•		•			
Seal Beach	•	•		•		•			
Estes	•			•		•			
Campbell	•	•							
Corona	•	•		•		•			
Edison	•								



ABOUT PAMEX

Established in 1985, Pamex Inc. is a leading manufacturer and distributor of commercial hardware for the Multi-Family Commercial as well as Residential markets. We provide commercial door locks, exit devices, door closers, builders hardware and hospitality & bath accessories. Included are the residential grade lock and latch sets to complete your multi-family and single family communities.

We offer high quality durable products at significant value to all of our customers. Our warehouse in Chino, California inventories the products in substantial volume which will always meet the construction roadmap needs. Our services include specification writing, submittal reviews, fire and accessibility code expertise and keying schedules. We provide in-house keying services, order entry and shipping management. Our outstanding customer service staff ensures we provide to all customers a service level that is beyond comparison. This is our promise to each and every one of our customers.

MISSION

Pamex provides dependable residential and commercial door locks in a teamwork driven and responsive way for busy and demanding building industry professionals that helps them be more cost effective and impressed.

WHY PAMEX?

- Responsive; You will be amazed at how smoothly and quickly your order is processed and shipped.
- Reliable; Pamex says what we will do and do what we say!
- Durable; High quality products with warranties to back up our promise!
- Cost; Keep your development in budget with durable, cost effective hardware solutions.
- Knowledgeable; Experts on codes, products and customer service.
- Service; Specification Writing, Codes and Compliancy, Keying Schedules, Substitution Request.



Minority Business Enterprise Certified Company
(Certificate #6483)



4680 Vinita Court, Chino, CA 91710
Tel: (909) 606-4168 (800) 621-6869 • Fax: (909) 606-4358 (800) 838-8307
E-mail: sales@pamexinc.com • Website: www.pamexinc.com

