



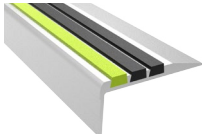
Direct Service Done Right



07 7200
Rooftop Products
Catalog

DIV
5

STAIR NOSINGS
05 5000



FALL PROTECTION
05 5213 / 07 7200



ENTRANCE MATS + FRAMES
ENTRANCE FLOOR GRILLES
12 4813 + 12 4816

DIV
12

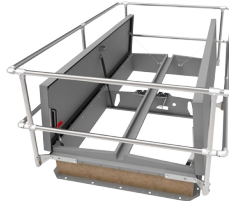


DIV
7

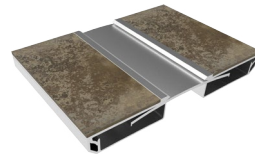
ROOF HATCHES
07 7200



SMOKE VENTS
07 7200



PREFORMED JOINT SEALS +
EXPANSION JOINT SYSTEMS
07 9100 + 07 9513

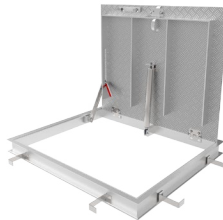


DIV
8

ACCESS DOORS
08 3100



FLOOR DOORS
08 3486

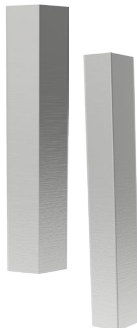


For over 50 years Nystrom has been the go to manufacturer for specialty building products.

Today we provide a wide range of floor, roof and safety related access products that help create safer, more accessible buildings.

DIV
10

WALL + DOOR PROTECTION
10 2600



FIRE PROTECTION CABINET
+ FIRE EXTINGUISHERS
10 4413 + 10 4416





Rooftop Products

ROOF HATCHES 5-10

| | |
|------------------|----|
| Personnel II™ | 5 |
| Personnel™ | 6 |
| ThermalMAX™ | 7 |
| SunLit™ | 8 |
| Security | 9 |
| Equipment Hatch™ | 10 |

we manufacture building products that
are built to withstand the rigors of commercial
use while making day to day operations
more efficient. For us **access is everything.**

ROOF HATCH FALL PROTECTION 11-12

| | |
|--------------------|----|
| Safety Railing | 11 |
| Ladder Safety Post | 12 |
| Grab Bar | 12 |

SMOKE VENTS 13-14

| | |
|--------------|-------|
| SmokEscape™ | 13-14 |
| SunLit™ eco | 15 |
| SunLit™ | 16-17 |
| AcousticMAX™ | 18-19 |

SMOKE VENT FALL PROTECTION 20-21

| | |
|----------------|----|
| Safety Railing | 20 |
| Burglar Bars | 21 |
| Screen | 21 |

FALL PROTECTION 22-23

| | |
|-------------------------|----|
| Weighted Base Guardrail | 22 |
| Permanent Guardrail | 23 |

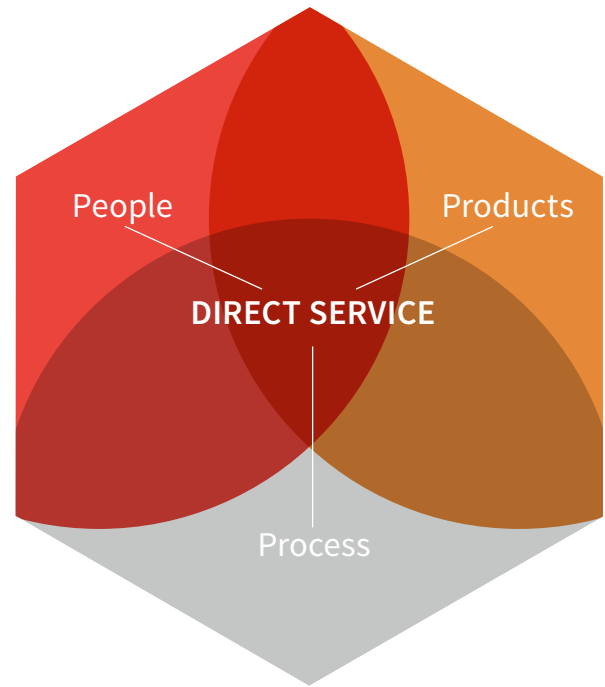
Options

| | |
|-------------|----|
| Access Type | 24 |
| Lock | 24 |
| Operation | 24 |
| Curb | 25 |
| Dome | 25 |
| Multi-Wall | 25 |
| Powder Coat | 26 |
| Anodize | 27 |
| Kynar | 27 |

Direct Service Done Right

Nystrom offers a broad line of specialty building products to better serve construction professionals and architects.

We have customer focused professionals and hassle-free processes that directly serve and simplify the building process.



PEOPLE

architects, engineers, designers, estimators, construction professionals, and service specialists

PROCESS

estimating & bid design support, tech support, logistics support, installation support, cad, revit/bim

PRODUCTS

standard & custom designs, warehousing, quality assurance, exceptional warranties, leed certification, labeling & tagging

TIME

EFFICIENCY

SERVICE



SPECIFICATION SUPPORT

By giving architects, designers and contractors open access to our expert team, we simplify the process of specifying and procuring access products from design through delivery and installation.



Personnel II

ROOF HATCH

The Personnel II Roof Hatch is designed with OSHA life safety in mind and provides easy access to roof areas. Simple to install and operate, this roof hatch is OSHA Compliant, stays cooler and conserves energy.

FEATURES

GAS SPRING OPERATION Designed for smooth one-handed operation that complies with OSHA safety standards, this roof hatch is easy to open and close.

CLEAR LABELING Color coordinated labels clearly identify safety yellow pull down handle and red hold open arm release.

RAILING-READY Safety railings install quick and easy with predrilled counterflash, designed to meet the 42" height requirement per OSHA and IBC.

DETAILS

MATERIAL

- Aluminum: 11 gauge, mill
- Steel: Galvanneal 14 gauge, ANSI 70 Gray powder coat

COVER Formed metal cover with liner, stiffened to withstand a live load of 40psf with a max deflection of 1/150 of the span

CURB Single wall curb with EZ tab counterflash and mounting flange

INSULATION 1 inch polyiso R-6 in curb, 1 inch polystyrene in cover

GASKET Extruded EPDM adhesive backed gasket seal, continuous around curb and cover

SPRING Gas spring with damper for smooth, controlled lift assistance

HINGE Heavy-duty pintle hinge with stainless steel hinge pin

HOLD OPEN ARM Zinc plated steel automatic hold open arm locks cover in open position

LATCH Zinc plated steel slam latch with exterior and interior turn handle and padlock hasps; 20psf wind uplift

PULL HANDLE Interior safety pull down handle, yellow powder coat

FINISHES



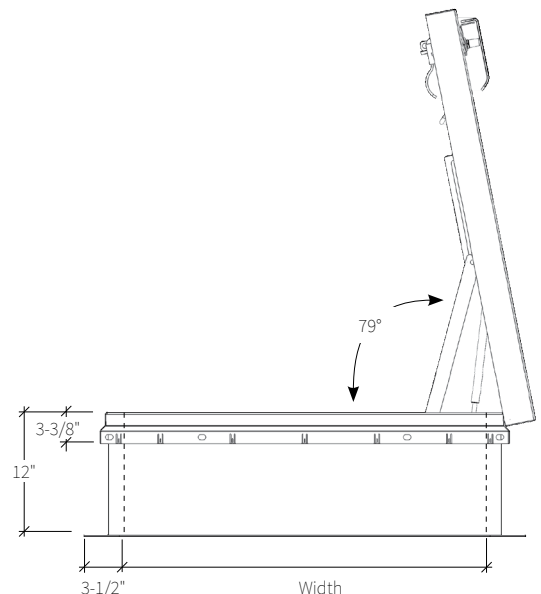
Mill
Aluminum



ANSI 70 Gray
Powder Coat



High Reflectance
White Powder Coat



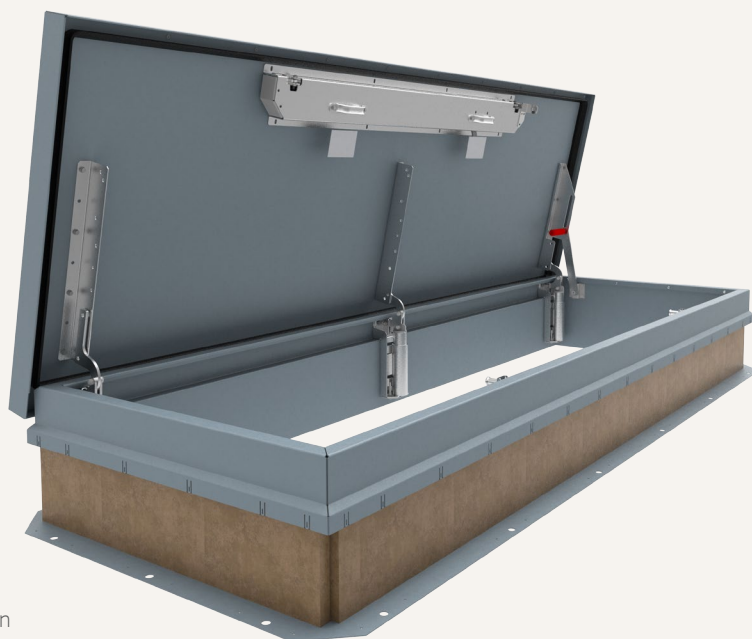
STANDARD MODELS

| GRAY | WHITE | ALUMINUM | SIZE (IN.) | ACCESS |
|-------|-------|----------|------------|------------|
| G3630 | W3630 | A3630 | 36 x 30 | Ladder |
| G3636 | W3636 | A3636 | 36 x 36 | Ladder |
| G4848 | W4848 | A4848 | 48 x 48 | Ladder |
| G3054 | W3054 | A3054 | 30 x 54 | Ship Stair |

Personnel

ROOF HATCH

Nystrom's Personnel Roof Hatch is easily customizable and provides safe access to roof areas on your building. Sized for ladder, ship stair, and service stair access with optional safety railings, grab bars and a variety of materials and finishes.



FEATURES

POWDER COAT FINISH The standard (RHPG) ANSI 70 gray powder coat finish provides outstanding corrosion resistance, superior gloss and color retention.

INSULATION OPTIONS Available with polyiso for improved thermal performance, mineral wool for sound attenuation and fire-resistance, and industry standard fiberboard.

DETAILS

MATERIAL OPTIONS

- Aluminum: 11 gauge, mill finish
- Galvanneal Steel: 14 gauge, ANSI 70 Gray powder coat
- Stainless Steel: Type 304, 14 gauge, 2B matte finish

COVER Formed metal cover with liner, stiffened to withstand a live load of 40psf with a max deflection of 1/150 the span

CURB Single wall curb with EZ tab counterflash and mounting flange

INSULATION 1 inch polystyrene in cover, 1 inch fiberboard around curb

GASKET Extruded EPDM adhesive backed gasket seal continuous around cover

SPRING/HINGE ASSEMBLY Zinc plated steel tamper-proof hinges contained within spring assembly, includes steel compression springs

HOLD OPEN ARM Zinc plated steel automatic hold open arm locks cover in open position

LATCH Zinc plated steel latch with exterior and interior turn handles and padlock hasps

- 20psf wind uplift for lengths ≤60 inch with slam latch
- 90psf wind uplift for lengths >60 inch with 2-point rotary latch

STANDARD MODELS

| GALVANNEAL STEEL GRAY | GALVANNEAL STEEL WHITE | ALUMINUM | SIZE (IN.) | ACCESS |
|-----------------------|------------------------|--------------|------------|---------------------------------|
| RHPG30X72S1T | RHPW30X72S1T | RHPA30X72S1T | 30 x 72 | Ship Stair or Alternating Tread |
| RHPG30X77S1T | RHPW30X77S1T | RHPA30X77S1T | 30 x 77 | Ship Stair or Alternating Tread |
| RHPG30X96S1T | RHPW30X96S1T | RHPA30X96S1T | 30 x 96 | Service Stair |
| RHPG36X54S1T | RHPW36X54S1T | RHPA36X54S1T | 36 x 54 | Ship Stair or Alternating Tread |
| RHPG36X96S1T | RHPW36X96S1T | RHPA36X96S1T | 36 x 96 | Service Stair |

Additional sizes and options available, call for more information.

FINISHES



Mill Aluminum



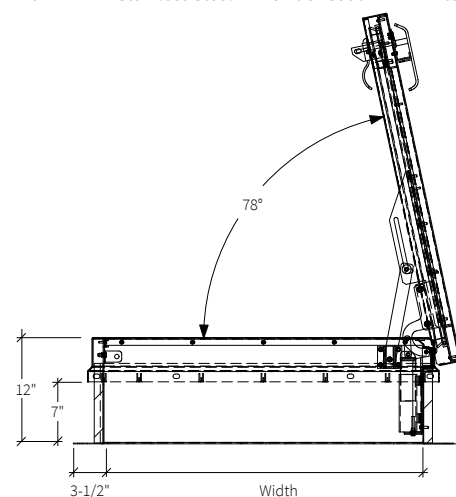
2B Matte Stainless Steel



ANSI 70 Gray Powder Coat



High Reflectance White Powder Coat



ThermalMAX™

ROOF HATCH

The ThermalMAX Roof Hatch sets the new standard for thermally efficient roof hatches. Designed with a thermal break to keep cool-cool and hot-hot, this hatch boasts an R-20 insulation rating making it today's most energy efficient hatch.

FEATURES

IECC COMPLIANCE Code C402 for commercial building envelopes requires $\geq R-5$ in skylight curbs, a gasket weather seal to minimize air leakage and a solar reflectance index ≥ 82 in climate zones 1, 2, 3.

ENHANCED INSULATION Three inch polyiso insulation provides a thermally efficient design to help maintain building envelope integrity; R-20.



DETAILS

MATERIAL 11 gauge Aluminum

FINISH Mill

COVER Formed metal cover withstands a live load of 40psf with a max deflection of 1/150 the span

CURB Single wall curb with railing ready EZ tab counterflash and mounting flange

INSULATION 3 inch polyiso in curb and cover; R-20.3

GASKET Extruded EPDM adhesive backed acoustic gasket seal, continuous around curb and cover to assure a continuous seal

SPRING Gas spring with integrated damper for smooth, controlled lift assistance

HINGE Heavy-duty pintle hinge with stainless steel hinge pin

HOLD OPEN ARM Zinc plated steel automatic hold open arm locks cover in open position

LATCH Zinc plated steel spring-type slam latch with inside and outside operating turn handles and padlock hasp provisions; 20psf wind uplift

PULL HANDLE Interior safety pull down handle, yellow powder coat

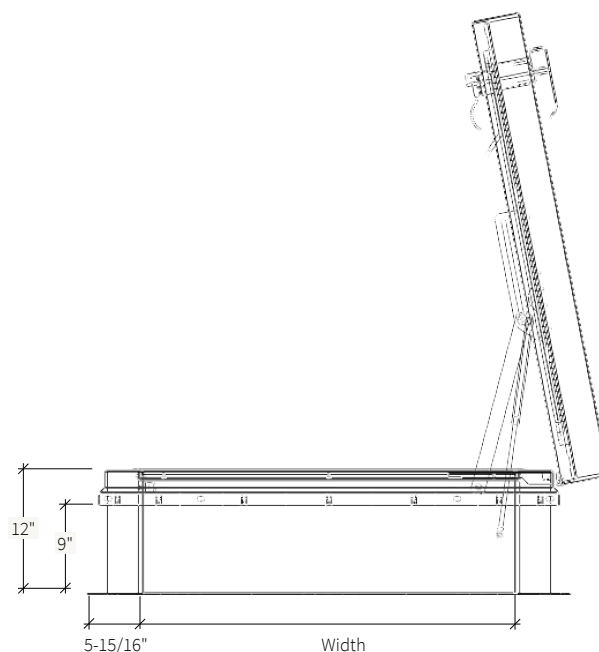
FINISHES



Mill
Aluminum

STANDARD MODELS

| ALUMINUM | SIZE (IN.) | DOOR | CURB |
|-----------|------------|--------|-------------|
| RHTA36X30 | 36 x 30 | Single | Single Wall |
| RHTA36X36 | 36 x 36 | Single | Single Wall |
| RHTA48X48 | 48 x 48 | Single | Single Wall |
| RHTA30X54 | 30 x 54 | Single | Single Wall |



SunLit™

ROOF HATCH

Providing natural daylighting, the SunLit Roof Hatch is engineered with a translucent dome cover that is ideal for use in commercial buildings, retail, schools and more.

FEATURES

POLYCARBONATE DOME Add the traditional look of a domed skylight with 1/8 inch thick UV coated polycarbonate available in clear, white or bronze colors.

OPTIONAL DOUBLE DOME Increase impact and thermal resistance with double glazed polycarbonate domes.

OPTIONAL INSULATION Add additional thermal performance with fully insulated curbs including 2 inch polyiso insulation; specify -ITD.



DETAILS

COVER Formed aluminum, 11 gauge, mill finish, metal cover with 1/8 inch clear polycarbonate, UV coated dome

CURB Single wall curb with EZ tab counterflash and mounting flange

- Aluminum: 11 gauge, mill finish
- Steel: 14 gauge galvaneal, ANSI 70 Gray powder coat

INSULATION 1 inch fiberglass in cover, 1 inch fiberboard around curb

GASKET Extruded EPDM adhesive backed gasket seal continuous around cover

SPRING/HINGE ASSEMBLY Zinc plated steel tamper-proof hinges contained within spring assembly, includes steel compression springs

HOLD OPEN ARM Zinc plated steel automatic hold open arm locks cover in open position

LATCH Zinc plated steel latch:

- 20psf wind uplift for lengths ≤60 inch with palm slam latch
- 90psf wind uplift for lengths >60 inches with 2-point rotary latch

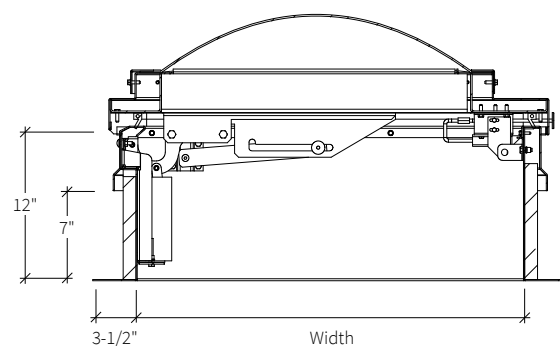
FINISHES



Mill
Aluminum



ANSI 70 Gray
Powder Coat



STANDARD MODELS

| ALUMINUM | STEEL + ALUMINUM | SIZE (IN.) | ACCESS | DOOR | CURB |
|--------------|------------------|------------|--------|--------|-------------|
| RHLA36X30S1P | RHLB36X30S1P | 36 x 30 | Ladder | Single | Single Wall |
| RHLA36X36S1P | RHLB36X36S1P | 36 x 36 | Ladder | Single | Single Wall |

Additional sizes and options available, call for more information.

Security

ROOF HATCH

Designed for applications with heightened security, Nystrom's Security Roof Hatch is constructed with heavy-duty materials, optional security grade locks. Ideal for prisons, banks, water treatment facilities and other high security buildings.

FEATURES

SECURITY GRADE MATERIAL Deter forced entry with extra heavy-duty top security grade roof hatches. Constructed of 3/16 inch steel or 1/4 inch aluminum.

OPTIONAL LOCKS Add essential security upgrades to your rooftop access with detention or mortise locks.

OPTIONAL VIEW PORT Gain visibility with the optional bulletproof view port on roof hatch cover. Ideal for use in prisons and wastewater treatment facilities.



DETAILS

MATERIAL

- Aluminum: 1/4 inch, mill finish
- Steel: 3/16 inch, ANSI 70 Gray powder coat

COVER Formed metal cover with liner, stiffened to withstand a live load of 40psf with a max deflection of 1/150 the span

CURB Single wall curb with EZ tab counterflash and mounting flange

INSULATION 1 inch polystyrene in cover, 1 inch fiberboard around curb

GASKET Extruded EPDM adhesive backed gasket seal, continuous around cover

SPRING/HINGE ASSEMBLY Zinc plated steel tamper-proof hinges contained within spring assembly, includes steel compression springs

HOLD OPEN ARM Zinc plated steel automatic hold open arm locks cover in open position

LATCH Zinc plated steel latch with exterior and interior turn handles and padlock hasp

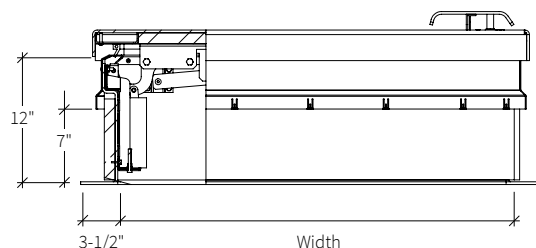
FINISHES



Mill
Aluminum



ANSI 70 Gray
Powder Coat



STANDARD MODELS

| GALVANIZED STEEL | ALUMINUM | STEEL + ALUMINUM | SIZE (IN.) | ACCESS | DOOR | CURB |
|------------------|--------------|------------------|------------|------------|--------|-------------|
| RHSG36X30S1T | RHSA36X30S1T | RHSB36X30S1T | 36 x 30 | Ladder | Single | Single Wall |
| RHSG36X36S1T | RHSA36X36S1T | RHSB36X36S1T | 36 x 36 | Ladder | Single | Single Wall |
| RHSG30X54S1T | RHSA30X54S1T | RHSB30X54S1T | 30 x 54 | Ship Stair | Single | Single Wall |

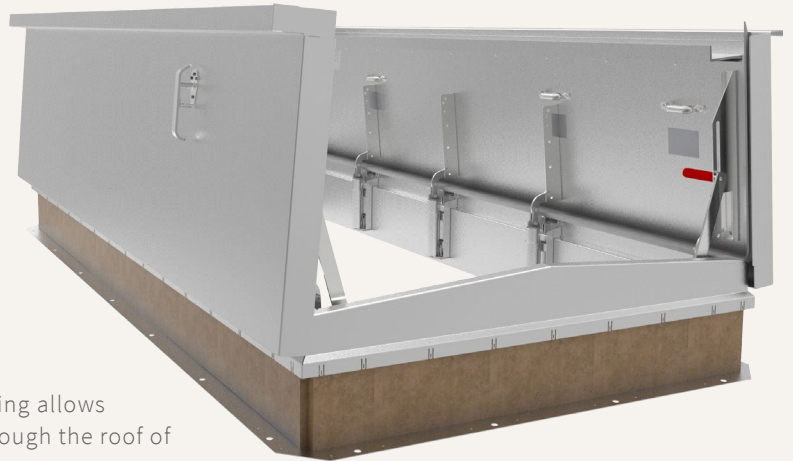
Additional sizes and options available, call for more information.

Download Drawings, CAD, Spec, and LEED documents at www.Nystrom.com

Equipment

HATCH

Nystrom's Equipment Roof Hatch is engineered to accommodate extra large equipment access through roofs. With options like curb mounts, heights, and finishes Nystrom is sure to meet your equipment servicing needs.



FEATURES

LARGEST CLEAR OPENING Industry's largest clear opening allows equipment up to 14' x 20' to be installed and serviced through the roof of your building.

STAINLESS STEEL MATERIAL Upgrade to corrosion resistant 304 stainless steel for corrosive environments such as waste water treatment facilities and coastal areas.

ENGINEERED FOR YOU Need a special size? A lift-off single door or double door? Nystrom excels at special orders. Each hatch is engineered for your specific application.

DETAILS

MATERIAL

- Aluminum: 11 gauge, mill finish
- Steel: 14 gauge galvalume, ANSI 70 Gray powder coat
- Stainless Steel: Type 304 14 gauge, 2B matte finish

COVER Formed metal cover withstands a live load of 40psf with a max deflection of 1/150 the span

CURB Single wall curb with EZ tab counterflash and mounting flange

INSULATION 1 inch fiberglass in cover, 1 inch fiberboard around curb

GASKET Extruded EPDM adhesive backed gasket seal continuous around cover

SPRING/HINGE ASSEMBLY Zinc plated steel tamper-proof hinge contained within spring assembly, includes steel compression spring

HOLD OPEN ARM Zinc plated steel automatic hold open arm locks cover in open position

LATCH Zinc plated steel latch with exterior and interior turn handles and padlock hasps

FINISHES



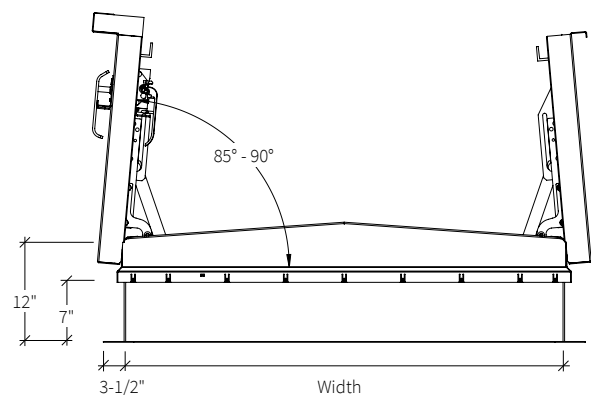
Mill



ANSI 70 Gray
Powder Coat



2B Matte
Stainless Steel



STANDARD MODELS

| GALVANIZED STEEL | ALUMINUM | STAINLESS STEEL | SIZE (IN.) | DOOR | CURB |
|------------------|---------------|-----------------|------------|--------|-------------|
| RHEG48X48S1T | RHEA48X48S1T | RHES48X48S1T | 48 x 48 | Single | Single Wall |
| RHEG60X60D1T | RHEA60X60D1T | RHES60X60D1T | 60 x 60 | Double | Single Wall |
| RHEG72X72D1T | RHEA72X72D1T | RHES72X72D1T | 72 x 72 | Double | Single Wall |
| RHEG60X120D1T | RHEA60X120D1T | RHES60X120D1T | 60 x 120 | Double | Single Wall |

Additional sizes and options available, call for more information.



Safety Railing

ROOF HATCH FALL PROTECTION

Nystrom's OSHA compliant Safety Railing is ideal for new and retrofit applications. The safety railing mounts to the existing roof hatch curb counterflash without penetrating the membrane or curb.

FEATURES

EASY FIELD INSTALLATION No field cutting required as rails are cut to exact size. Easy assembly fittings and quick mounting on counterflash using a patented nut backing plate.

CHAIN CLOSURE Comes with standard chain barrier with easy spring clip attachment to guard against falls.

OPTIONAL SELF CLOSING GATE (shown) Designed to automatically close, the gate is constructed with spring loaded hinges to protect against falls.

DETAILS

MATERIAL Rails and posts, galvanized steel, 1-1/4 inch ID (1.66 inch OD) Schedule 40 pipe

FINISH Mill or Powder Coat

FITTINGS Cast aluminum alloy with set screw hold

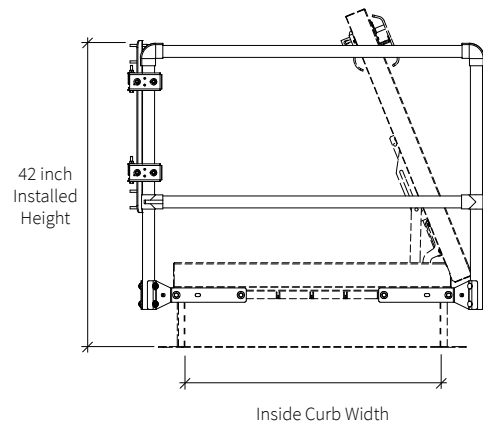
MOUNTING BRACKETS 3/16 inch steel, zinc plated with nut backing plate

HARDWARE Hex head bolts 3/8 - 16 by 3/4 inch zinc plated steel

EXIT Must be kept closed when roof hatch door is open

- Self-Closing Gate: Galvanized steel, 1-1/4 inch ID (1.66 inch OD) Schedule 40 pipe, self-closing with coil spring
- Chain: 3/16 inch zinc plated steel link chain with spring clip ends

COMPLIANCE OSHA 29 CFR1910.23 guarding floor and wall openings and holes



STANDARD MODELS

| CHAIN CLOSURE | | GATE CLOSURE | | SIZE (IN.) | ACCESS |
|---------------|-------------|--------------|-------------|------------|--------|
| YELLOW | MILL | YELLOW | MILL | | |
| SRCY30X54SC | SRCG30X54SC | SRCY30X54SG | SRCG30X54SG | 30 x 54 | Side |
| SRCY36X30FC | SRCG36X30FC | SRCY36X30FG | SRCG36X30FG | 36 x 30 | Front |
| SRCY36X36FC | SRCG36X36FC | SRCY36X36SG | SRCG36X36SG | 36 x 36 | Front |
| SRCY30X96SC | SRCG30X96SC | SRCY30X96SG | SRCG30X96SG | 30 x 96 | Side |
| SRCY36X96SC | SRCG36X96SC | SRCY36X96SG | SRCG36X96SG | 36 x 96 | Side |
| SRCY48X48FC | SRCG48X48FC | SRCY48X48FG | SRCG48X48FG | 48 x 48 | Front |

Safety Post

ROOF HATCH FALL PROTECTION

The Safety Post is designed to extend 42 inches above a landing platform to aid safe ladder access through a roof hatch. The spring assisted telescoping design mounts to the top two rungs of a fixed vertical ladder.



DETAILS

MATERIAL 1-1/2 inch by 1-1/2 inch by 1/8 inch high strength square tubing with a pull-up loop provided at the upper end to facilitate raising of post.

- Steel: yellow powder coat paint or hot dip galvanized
- Stainless Steel: Type 304, mill
- Aluminum: Mill

BALANCING SPRING Stainless steel constant force spring

HARDWARE Type 316 stainless steel

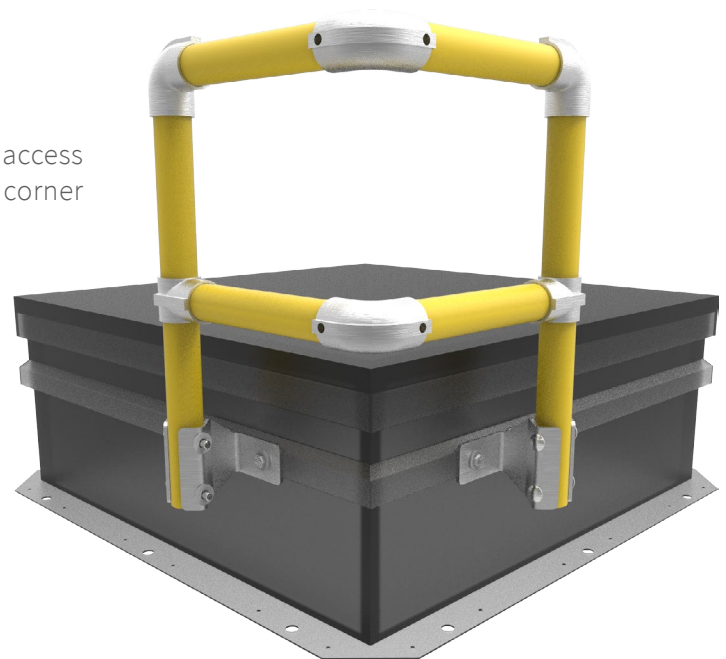
STANDARD MODELS

| MODEL | MATERIAL | FINISH |
|-------|-----------------|---------------------|
| SPY | Steel | Powder Coat, Yellow |
| SPG | Steel | Hot Dip Galvanized |
| SPA | Aluminum | Mill |
| SPS | Stainless Steel | Mill |

Safety Grab Bar

ROOF HATCH FALL PROTECTION

The Safety Grab Bar is engineered to provide safe access through roof hatches. The grab bar mounts to a corner section through the curb counterflashing.



DETAILS

MATERIAL Rails and posts, galvanized steel, 1-1/4 inch ID (1.66 inch) Schedule 40 pipe

FITTINGS Cast aluminum alloy with set screw hold

MOUNTING BRACKETS 3/16 inch steel, zinc plated with nut backing plate

HARDWARE Hex head bolts 3/8 inch - 16 by 3/4 inch zinc plated steel

STANDARD MODELS

| MODEL | MATERIAL | FINISH |
|-------|----------|---------------------|
| SGBY | Steel | Powder Coat, Powder |
| SGBG | Steel | Hot Dip Galvanized |

SmokEscape™

(Single Door)

SMOKE VENT

Nystrom's Single Door SmokEscape Smoke Vent, engineered with a metal cover, is ideal for factory, storage and warehouse occupancies, and hoistways. Constructed with heavy-duty materials, the single door smoke vent offers the largest effective vent area.

FEATURES

GREATER EFFECTIVE VENT AREA Reduce the number of smoke vents required on the roof with the industry's largest 48 x 96 single door smoke vent.

OPTIONAL LOUVERED CURB Add additional ventilation with louvered curbs. Ideal for use in elevator shafts and hoistways.



DETAILS

MATERIAL

- Aluminum: 11 gauge, mill finish
- Steel: 14 gauge galvanized, ANSI 70 Gray powder coat

COVER Formed metal cover with liner, internally stiffened to withstand a live load of 40psf

CURB Single wall curb with EZ tab counterflash and mounting flange
Insulation 1 inch Polyiso R-6 in cover and around curb.

GASKET Extruded EPDM adhesive backed gasket seal, continuous around cover

HINGE Heavy-duty pintle hinge with stainless steel hinge pins
Spring Gas spring with damper opens cover against 10psf snow load

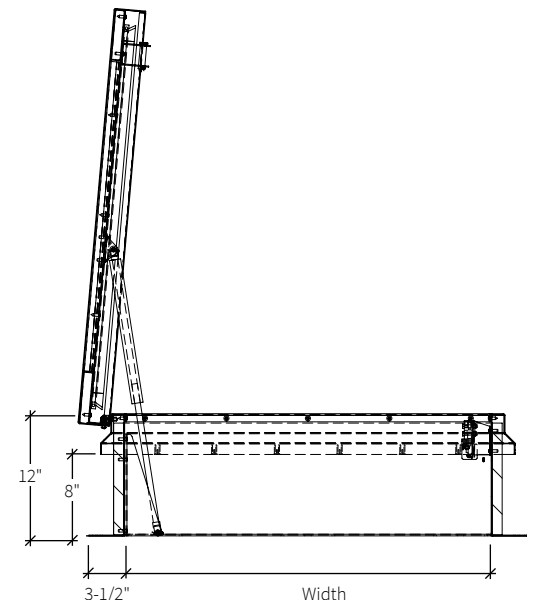
HOLD OPEN ARM Zinc plated steel automatic hold open arm locks cover in open position

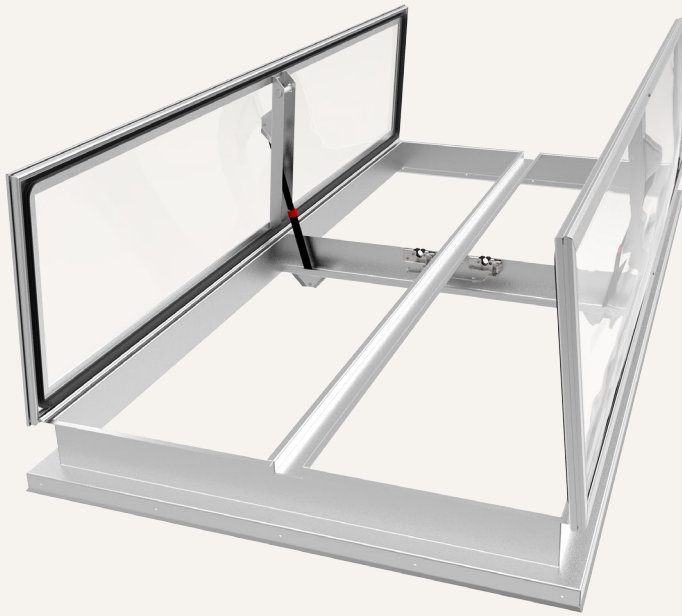
LATCH Zinc plated steel rotary latch designed to hold covers closed against 30psf wind uplift. Opens manually by external and internal pull cables. Opens automatically with a fusible link at standard temperature 165°F.

CERTIFICATIONS UL 793 Listed, FM 4430 Approved

ORDER GUIDE

| BASE | MATERIAL | WIDTH | X | LENGTH | DOOR | CURB | ELECTRIC | LINK TEMP (°F) | CLOSING | — | OPTIONS |
|------|--------------------------------------|---|-----------|-----------|---------------|---------------|-------------------|----------------|--------------------|---|--------------------------|
| SVS | | | X | | | | | | | — | |
| | A Aluminum Curb & Cover | Standard Sizes (W x L) | | | S Single Door | 1 Single Wall | N No Electrical | 165 350 | R Rooftop Close | | SFM FM Labeled |
| | B Galvannealed Curb / Aluminum Cover | 30" x 30" | 36" x 30" | 36" x 36" | | 2 Double Wall | L 24VDC/24VAC | 212 360 | W Manual Winch | | OP1 Door Position Sensor |
| | W Galvannealed Curb & Cover | 48" x 48" | 48" x 72" | 48" x 96" | | 3 Curb Mount | H 110VAC / 240VAC | 280 450 | A Linear Actuator* | | B1A Burglar Bars |
| | | Additional size options also available. | | | | | | | *Voids UL | | |





SunLit™ eco

SMOKE VENT

The SunLit eco sets the new standard for UL793 and FM 4430 rated daylighting smoke vents. Its low-profile, lightweight design and extruded apron mount flange make it ideal for both retrofit and new construction.

FEATURES

INNOVATIVE DESIGN Innovative patent-pending design means better performance, easier install and lower cost.

NATURAL DAYLIGHTING Add the traditional look of a domed skylight and added sustainability benefit of natural daylighting.

DETAILS

MATERIAL 11 gauge aluminum

FINISH Mill

COVER Aluminum cover and polycarbonate dome to withstand a live load of 40psf

CURB Aluminum single wall curb with apron mount

GASKET Extruded EPDM adhesive backed gasket seals

SPRING Gas spring with damper opens cover against 10psf snow load in not less than 2 seconds

HINGE Patent-pending extruded hinge, continuous

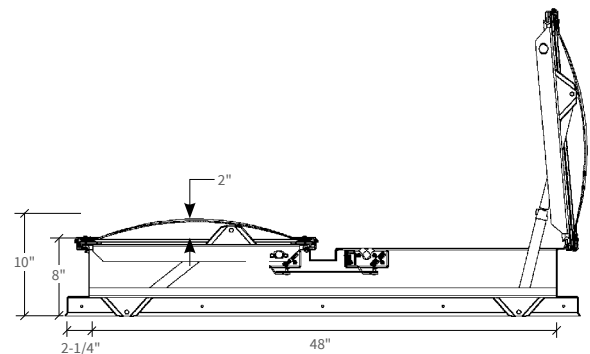
HOLD OPEN ARM Hold open arm integrated into the gas spring, locks cover in fully open position

LATCH Zinc plated steel rotary latch designed to hold covers closed against 90 psf. Opens manually by external and internal pull cables. Opens automatically with a fusible link at standard temperature 165°F.

OPERATION Opens automatically with fusible link and manual pull handles

SIZES 48 inches by 48 inches to 48 inches by 96 inches

CERTIFICATION UL 793 listed and FM 4330 pending



STANDARD MODELS

| ALUMINUM | SIZE (IN.) | DOOR | CURB |
|-------------------------|------------|--------|-------------|
| SVEA48X48D6N165R | 48 x 48 | Double | Single Wall |
| SVEA48X96D6N165R | 48 x 96 | Double | Single Wall |

SunLit™ (Single Door)

SMOKE VENT

Providing natural daylighting, the Single Door SunLit Smoke Vent is engineered with a translucent cover. This smoke vent includes a clear or color tinted multi-wall panel or optional domes that are ideal for use in factory, storage and warehouse commercial buildings.

FEATURES

MULTI-WALL LIGHT TRANSMISSION Add optional color panels (pg. 25) to change natural daylighting characteristics.

OPTIONAL DOME Add the traditional look of a domed skylight with 1/8 inch thick UV coated polycarbonate available in clear, white or bronze colors.



DETAILS

COVER Extruded aluminum frame, 11 gauge, mill finish, with 5/8 inch 3 layer structural multi-wall R-3 in white polycarbonate. Cover withstands a live load of 40psf.

CURB Single wall curb with EZ tab counterflash and mounting flange

- Aluminum: 11 gauge, mill finish
- Steel: 14 gauge galvaneal, ANSI 70 Gray powder coat

INSULATION 1 inch Polyiso R-6 around curb perimeter

GASKET Extruded EPDM adhesive backed gasket seal, continuous around cover

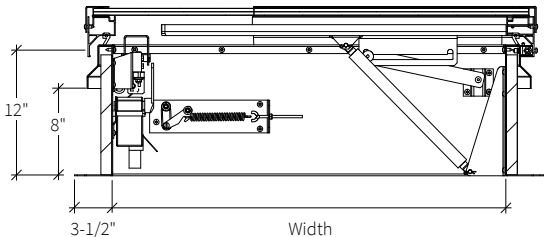
HINGE Heavy-duty pintle hinge with stainless steel hinge pin

SPRING Gas spring damper opens cover against 10psf snow load

HOLD OPEN ARM Zinc plated steel automatic hold open arm locks cover in open position

LATCH Zinc plated steel rotary latch designed to hold covers closed against 30psf wind uplift. Opens manually by external and internal pull cables.

CERTIFICATIONS UL 793 Listed



ORDER GUIDE

| BASE | MATERIAL | WIDTH | X | LENGTH | DOOR | CURB | ELECTRIC | LINK TEMP (°F) | CLOSING | — | OPTIONS |
|------|---|---|---|--------|----------------------|---|--|--|--|-----------|---|
| SVL | | | X | | | | | | | — | |
| | A Aluminum Curb & Cover B Galvannealed Curb / Aluminum Cover | Standard Sizes (W x L) 30" x 30" 36" x 30" 36" x 36" 48" x 48" 48" x 72" 48" x 96" | | | S Single Door | 1 Single Wall 2 Double Wall 3 Curb Mount | N No Electrical L 24VDC/24VAC H 110VAC / 240VAC | 165 350 212 360 280 450 | R Rooftop Close W Manual Winch A Linear Actuator* | | Dome, Polycarb. LPW White LPC Clear Double Dome, Polycarb. LPWW White/White LPCW Clear/White Multi-wall LMC Clear LPZ Bronze LMB Blue LMG Green |
| | | Additional size options also available. | | | | | | | | *Voids UL | |

SunLit™

(Double + Quad Door)

SMOKE VENT



The Double and Quad Door SunLit Smoke Vent is engineered with translucent covers using polycarbonate for the added sustainability benefit of natural daylighting. With options like color panels, and electrical operation, Nystrom is sure to meet your building sustainability and fire and life safety needs.

FEATURES

MULTI-WALL LIGHT TRANSMISSION Add optional color panels (pg. 25) to change natural daylighting characteristics.

OPTIONAL DOME Add the traditional look of a domed skylight with 1/8 inch thick UV coated polycarbonate available in clear, white or bronze colors.

DETAILS

COVER Extruded aluminum frame, 11 gauge, mill finish, with 5/8 inch 3 layer structural multi-wall R-3 in white polycarbonate. Cover withstands a live load of 40psf.

CURB Single wall curb with EZ tab counterflash and mounting flange

- Aluminum: 11 gauge, mill finish
- Steel: 14 gauge galvaneal, ANSI 70 Gray powder coat

INSULATION 1 inch Polyiso R-6 around curb perimeter

GASKET Extruded EPDM adhesive backed gasket seal, continuous around cover

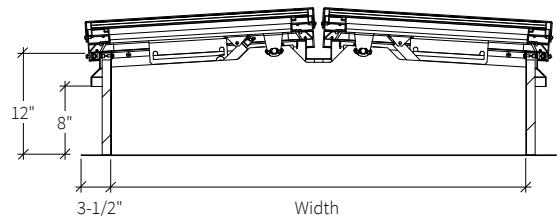
HINGE Heavy-duty pintle hinge with stainless steel hinge pin

SPRING Gas spring damper opens cover against 10psf snow load

HOLD OPEN ARM Zinc plated steel automatic hold open arm locks cover in open position

LATCH Zinc plated steel rotary latch designed to hold covers closed against 90psf wind uplift. Opens manually by external and internal pull cables.

CERTIFICATIONS UL 793 Listed



ORDER GUIDE

| BASE | MATERIAL | WIDTH | X | LENGTH | DOOR | CURB | ELECTRIC | LINK TEMP (°F) | CLOSING | — | OPTIONS |
|------------|---|---|-----------|------------|----------------------|----------------------|--------------------------|----------------|---------------------------|-----------|---|
| SVL | | | X | | | | | | | — | |
| | A Aluminum Curb & Cover | Standard Sizes (W x L) | | | D Double Door | 1 Single Wall | N No Electrical | 165 350 | R Rooftop Close | | Dome, Polycarb. LPW White LPC Clear Double Dome, Polycarb. LPWW White/White LPCW Clear/White Multi-wall LMC Clear LPZ Bronze LMB Blue LMG Green |
| | B Galvannealed Curb / Aluminum Cover | 48" x 48" | 48" x 72" | 48" x 96" | Q Quad Door | 2 Double Wall | L 24VDC/24VAC | 212 360 | W Manual Winch | | |
| | | 60" x 60" | 60" x 96" | 60" x 120" | | 3 Curb Mount | H 110VAC / 240VAC | 280 450 | A Linear Actuator* | | |
| | | 72" x 72" | 72" x 96" | | | | | | | | |
| | | Additional size options also available. | | | | | | | | *Voids UL | |

AcousticMAX™ (STC 48)

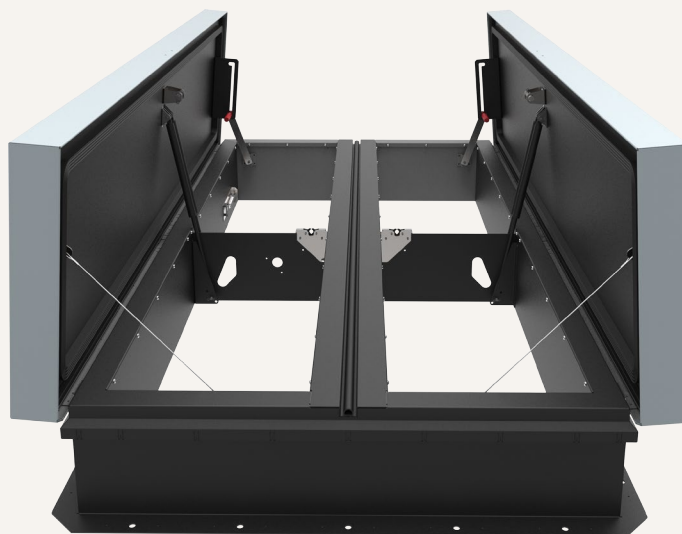
SMOKE VENT

Block the intrusion of exterior environmental noise with Nystrom's new STC 48 AcousticMAX Smoke Vent. Perfect for theaters and performing arts centers; every detail on these smoke vents is designed with precision.

FEATURES

INNOVATIVE SOUND CONTROL Designed to keep out unwanted noises ensuring acoustical integrity when all you want to hear is the performance.

PREFINISHED BLACK INTERIOR Eliminate field painting hassle with the prefinished interior that seamlessly integrates into the ceiling.



DETAILS

SOUND RATING(S) Independent third party tested to ASTM E90 and ASTM E1332 STC 48 - OITC 36

MATERIAL 14 gauge galvalume steel; powder coat

FINISH ANSI 70 Gray exterior cover with black interior liner and black curb

COVER Metal with liner, withstands a live load of 40psf with a max deflection of 1/150 the span

CURB Double wall curb with EZ tab counterflash and mounting flange

INSULATION Mineral wool and sound mat in cover and curb, total R-10

GASKET Extruded EPDM adhesive backed gasket seals

HINGE Stainless steel heavy duty pintle hinge

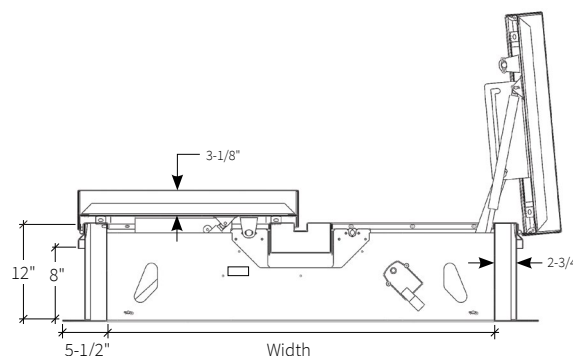
SPRING Gas spring with damper opens cover against 10psf snow load

HOLD OPEN ARM Zinc plated steel automatic hold open arm locks cover in open position

LATCH Zinc plated steel rotary latch designed to hold covers closed against 90psf wind uplift

OPERATION Opens automatically with a fusible link and manual pull handles

CERTIFICATIONS UL 793 Listed, FM 4430 Approved



ORDER GUIDE

| BASE | WIDTH | X | LENGTH | DOOR | CURB | ELECTRIC | LINK TEMP (°F) | CLOSING | — | OPTIONS |
|------|--|---|--------|------------------------------|-------------------------------|---|-------------------------------|---|---|--|
| SVXG | | X | | | | | | | — | |
| | Standard Sizes (W x L) 30" x 30" 36" x 30" 36" x 36" 48" x 48" 48" x 72" 48" x 96" Additional size options also available. | | | D Double Door Q Quad Door | 2 Double Wall 3 Curb Mount | N No Electrical L 24VDC/24VAC H 110VAC / 240VAC | 165 350 212 360 280 450 | R Rooftop Close W Manual Winch A Linear Actuator* | | SFM FM Labeled OP1 Door Position Sensor B1A Burglar Bars |

*Voids UL

AcousticMAX™ (STC 50)

SMOKE VENT



Providing both sound control and thermal performance, the new STC 50 AcousticMAX Smoke Vent is the industry's highest rated. With details like factory finished black interior, superior thermal performance and optional electrical operations and burglar bars, no detail was overlooked.

FEATURES

SUPERIOR THERMAL PERFORMANCE This R-14 energy-efficient smoke vent is designed to save money with reduced heat loss.

INNOVATIVE SOUND CONTROL Designed to keep out unwanted noises ensuring acoustical integrity when all you want to hear is the performance.

DETAILS

SOUND RATING(S) Independent third party tested to ASTM E90 and ASTM E1332 STC 50 - OITC 39

MATERIAL 14 gauge galvalume steel; powder coat

FINISH ANSI 70 Gray exterior cover with black interior liner and black curb

COVER Metal with liner, withstands a live load of 40psf with a max deflection of 1/150 the span

CURB Double wall curb with EZ tab counterflash and mounting flange

INSULATION Mineral wool and sound mat in cover and curb, total R-14

GASKET Extruded EPDM adhesive backed gasket seals

HINGE Stainless steel heavy duty pintle hinge

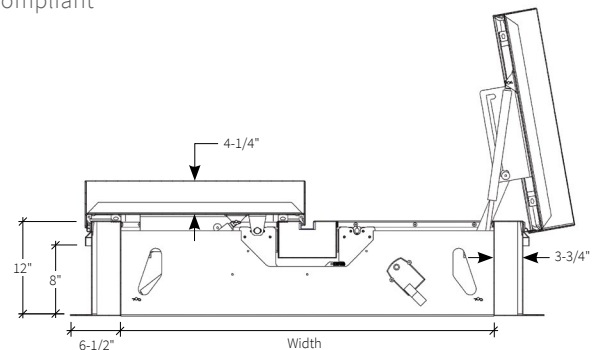
SPRING Gas spring with damper opens cover against 10psf snow load

HOLD OPEN ARM Zinc plated steel automatic hold open arm locks cover in open position

LATCH Zinc plated steel rotary latch designed to hold covers closed against 90psf wind uplift

OPERATION Opens automatically with a fusible link and manual pull handles

CERTIFICATIONS UL 793 Listed, FM 4430 Approved and IBC1207 Compliant



ORDER GUIDE

| BASE | WIDTH | X | LENGTH | DOOR | CURB | ELECTRIC | LINK TEMP (°F) | CLOSING | — | OPTIONS |
|------|---|-----------|-----------|---------------|---------------|-------------------|----------------|--------------------|---|--------------------------|
| SVYG | | X | | | | | | | — | |
| | Standard Sizes (W x L) | | | D Double Door | 2 Double Wall | N No Electrical | 165 350 | R Rooftop Close | | SFM FM Labeled |
| | 30" x 30" | 36" x 30" | 36" x 36" | Q Quad Door | 3 Curb Mount | L 24VDC/24VAC | 212 360 | W Manual Winch | | OP1 Door Position Sensor |
| | 48" x 48" | 48" x 72" | 48" x 96" | | | H 110VAC / 240VAC | 280 450 | A Linear Actuator* | | B1A Burglar Bars |
| | Additional size options also available. | | | | | | | | | |
| | | | | | | | | | | |

Safety Railing

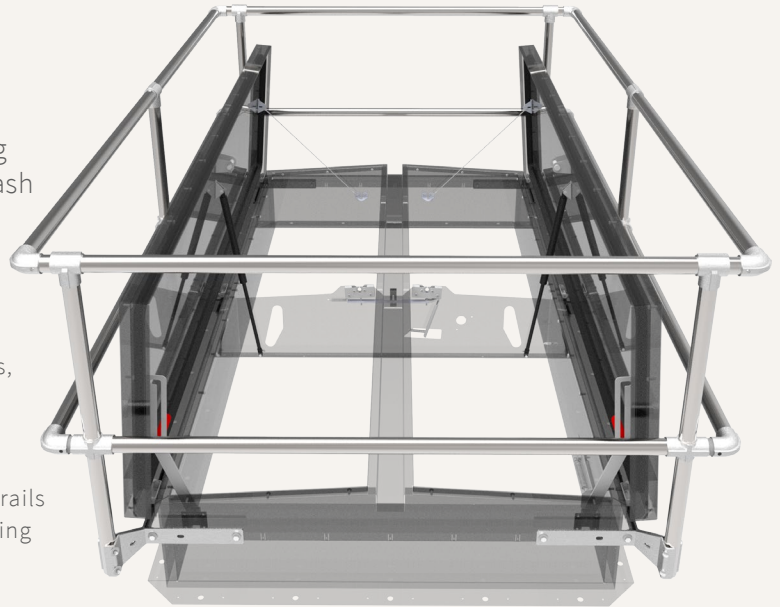
SMOKE VENT FALL PROTECTION

Nystrom's OSHA compliant Safety Railing is ideal for new and retrofit applications. The safety railing mounts to the existing smoke vent curb counterflash without penetrating the membrane or curb.

FEATURES

FALL PROTECTION In accordance with OSHA regulations, the safety railing is engineered to guard smoke vent openings to protect against falls.

EASY FIELD INSTALLATION No field cutting required as rails cut to exact size. Easy assembly fittings and quick mounting on counterflash through curb.



DETAILS

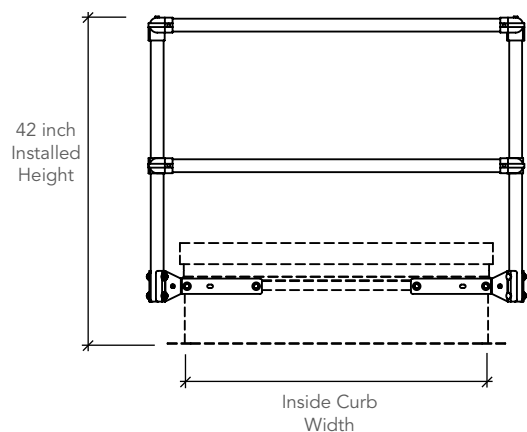
MATERIAL Rails and posts, galvanized steel, 1-1/4 inch ID (1.66 inch) Schedule 40 pipe

FITTINGS Cast aluminum alloy with set screw hold

MOUNTING BRACKETS 3/16 inch steel, zinc plated with nut backing plate

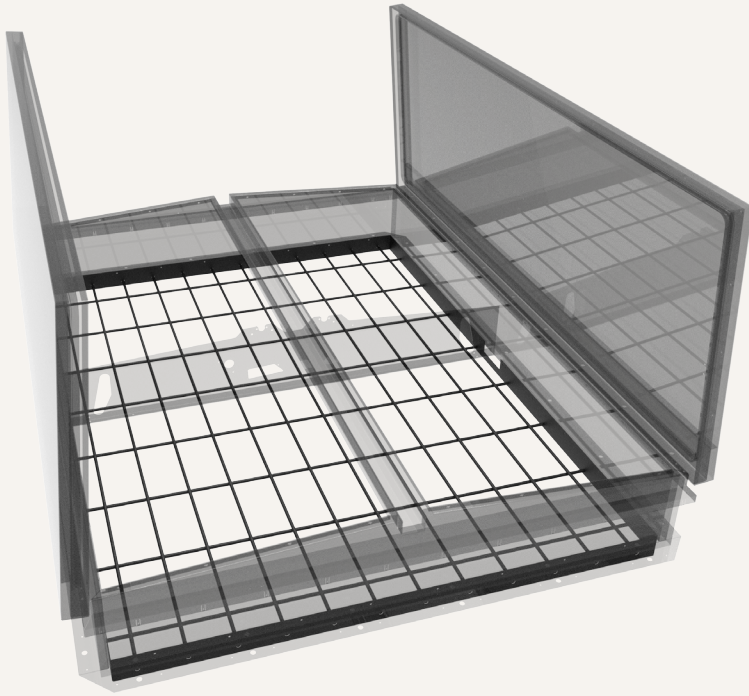
HARDWARE Hex head bolts 3/8 inch - 16 x 3/4 inch zinc plated steel

COMPLIANCE OSHA 29 CFR1910.23 guarding floor and wall openings and holes



ORDER GUIDE

| 4-SIDED | | 2-SIDED | |
|--------------|------------|-------------|------------|
| MODEL | SIZE (IN.) | MODEL | SIZE (IN.) |
| SRVG36X30NN | 36 x 30 | SRVG48XNNTN | 48 |
| SRVG36X36NN | 36 x 36 | SRVG60XNNTN | 60 |
| SRVG48X48NN | 48 x 48 | SRVG72XNNTN | 72 |
| SRVG48X96NN | 48 x 96 | | |
| SRVG60X96NN | 60 x 96 | | |
| SRVG60X120NN | 60 x 120 | | |
| SRVG60X144NN | 60 x 144 | | |
| SRVG66X144NN | 66 x 144 | | |
| SRVG72X144NN | 72 x 144 | | |



Burglar Bars

SMOKE VENT FALL PROTECTION

Nystrom's Burglar Bars, a smoke vent accessory, are designed for security and safety and to prevent unauthorized entry. Engineered for each smoke vent, these bars are available on new installations as a factory installed option.

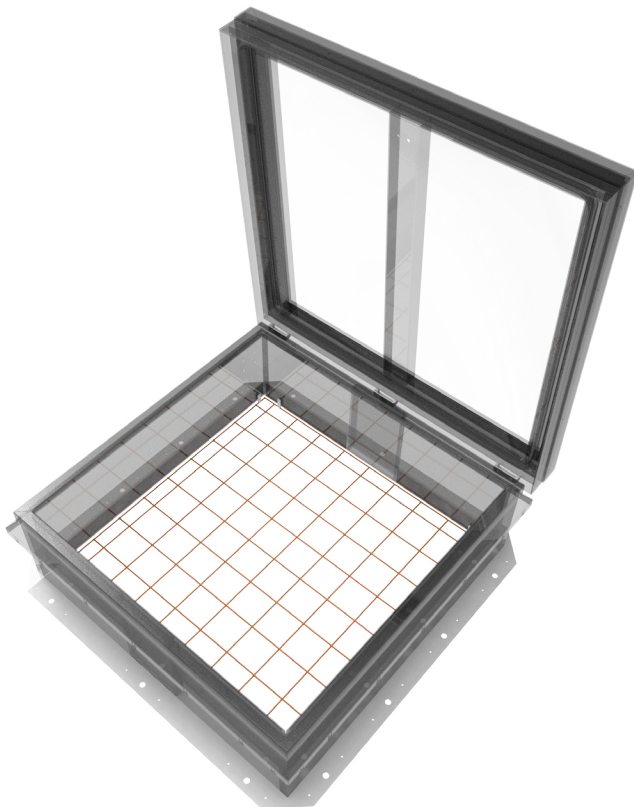
DETAILS

MATERIAL Steel, 1/2 inch or 3/4 inch diameter

SPACING 6 inch by 6 inch, 6 inch by 12 inch or custom

ORDER GUIDE

| MODEL | DIAMETER | SPACING |
|-------|----------|----------|
| B1A | 1/2" | 6" x 12" |
| B1B | 1/2" | 6" x 6" |
| B2A | 3/4" | 6" x 12" |
| B2B | 3/4" | 6" x 6" |



Screen

SMOKE VENT FALL PROTECTION

The Fall Protection Screen, a smoke vent safety product, is designed to aid in fall protection. This sturdy screen, spaced 4 inch apart with fully welded intersections is available on new installations as a factory install option on each smoke vent. Third party tested with a drop test of 400 pounds of 30 inch diameter sandbag from 42 inches.

DETAILS

MATERIAL Steel, 0.163 inch diameter

SPACING 4 inch by 4 inch

COMPLIANCE OSHA 1926.502c

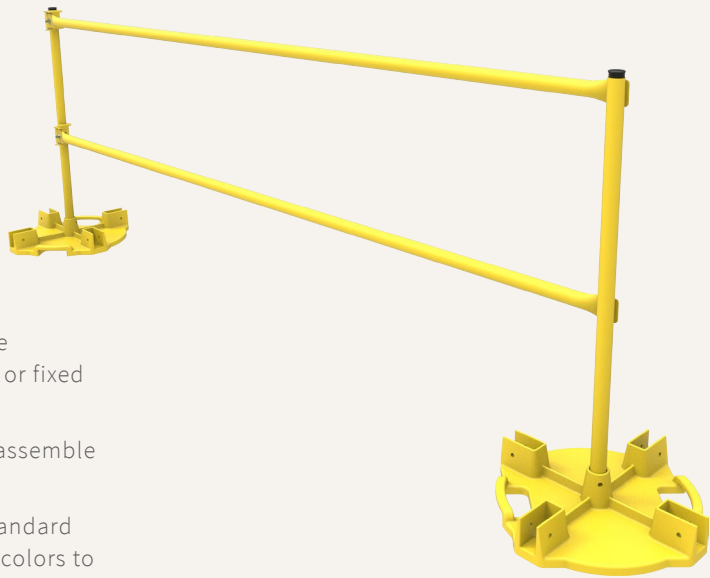
ORDER GUIDE

| MODEL | DIAMETER | SPACING |
|-------|----------|---------|
| B3C | 0.163" | 4" x 4" |

Weighted Base

GUARDRAIL FALL PROTECTION

The OSHA compliant portable railing system is designed to keep people safe while working on rooftops and other structures. No need for tie-off points and expensive safety equipment.



FEATURES

PORTABLE BASE The weighted base is designed to be portable and installed as an alternative to permanent or fixed mount.

EASY INSTALLATION The posts and rails are easy to assemble and install.

COORDINATING COLORS The system comes with a standard powder coat finish that is available in a wide range of colors to match your building's exterior.

DETAILS

MATERIALS

- Weighted Base and Post Assembly: Steel, 1-1/4 inch ID (1.66 inch OD) Schedule 40 pipe
- Horizontal and Corner Rails: 1-5/8 inch by .065 inch Steel

FINISH Powder Coat

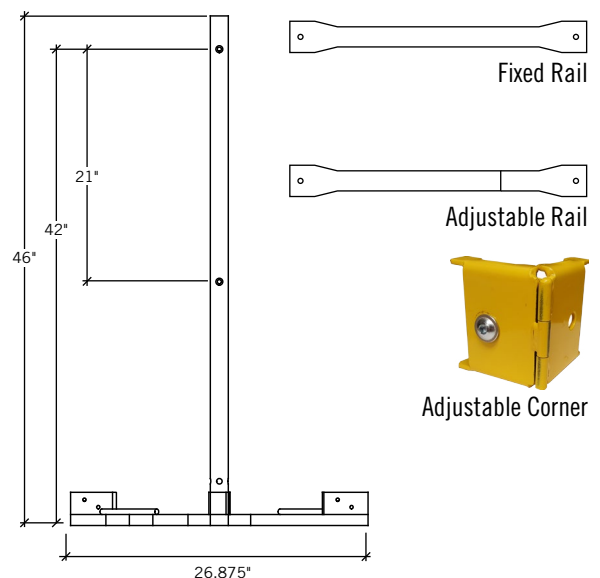
RAIL FASTENERS 3/8 inch - 16 by 1 inch zinc plated steel

COMPLIANCE OSHA 29 CFR 1910.23 and 1926.502

MODELS

| MODEL | DESCRIPTION | DIMENSION | MATERIAL + FINISH |
|--------------------|------------------------|-----------------|--------------------|
| GR-WBP-ASM-RN | Weighted Base and Post | 26.875" x 46" | Steel, Powder Coat |
| GR-WB-000 | Weighted Base Only | | Steel Powder Coat |
| GR-WBPR-004-RN | Fixed Rail* | 4' | Steel Powder Coat |
| GR-WBPR-005-RN | Fixed Rail* | 5' | Steel Powder Coat |
| GR-WBPR-008-RN | Fixed Rail* | 8' | Steel Powder Coat |
| GR-WBPR-010-RN | Fixed Rail* | 9'-10" | Steel Powder Coat |
| GR-WBPR-ADJ-043-RN | Adjustable Rail* | 2'-5" to 3'-9" | Steel Powder Coat |
| GR-WBPR-ADJ-070-RN | Adjustable Rail* | 3'-9" to 5'-10" | Steel Powder Coat |
| GR-WBPR-ADJ-120RN | Adjustable Rail* | 5'-10" to 10' | Steel Powder Coat |
| GR-WB-AC | Adjustable Corner* | | Steel Powder Coat |

*Note: Rails and corners are sold in sets of 2. Rails include 2 rails, 1 post and weighted base. When ordering, please be sure to include 1 additional weighted base.



Perimeter

GUARDRAIL FALL PROTECTION



The OSHA compliant Permanent Guardrail system's unique bracket installs under the drip edge, coping cap, gravel stop or gutter system without penetrating the roofing system and allows for retro fit installations.

FEATURES

PERMANENT MOUNT The edge mounted guardrail system does not penetrate the roof membrane and installs under the coping and roof flashing.

EASY INSTALLATION The posts and rails are easy to assemble and install.

COORDINATING COLORS The system comes with a standard powder coat finish that is available in a wide range of colors to match your building's exterior.

DETAILS

MATERIALS

- Post and Bracket Assembly: Steel, 1-1/4 inch ID (1.66 inch OD) Schedule 40 pipe
- Horizontal and Corner Rails: 1-5/8 inch by .065 inch Steel

FINISH Powder Coat

STRUCTURAL FASTENERS

- Wood: RSS structural screws
- Concrete: Caliburn PH concrete pan head screw

RAIL FASTENERS 3/8 inch - 16 x 1 inch zinc plated steel

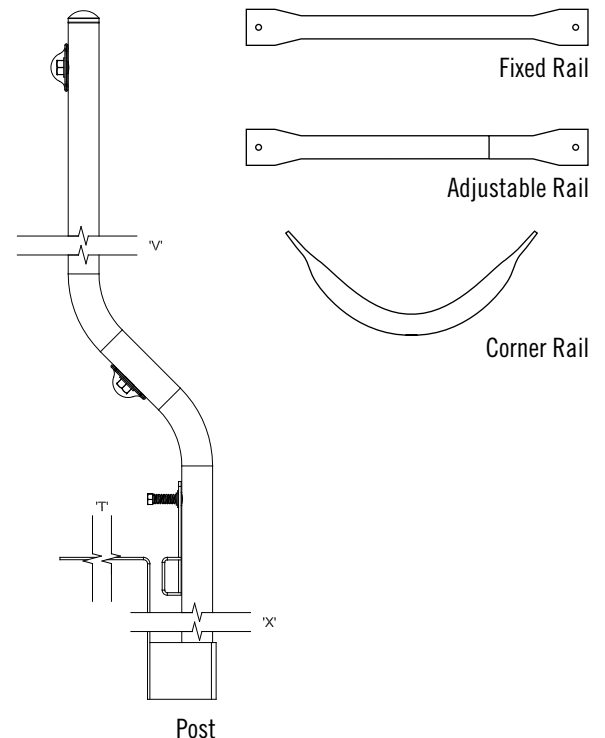
COMPLIANCE OSHA 29 CFR 1910.23 and 1926.502

OPTIONS LadderGARD

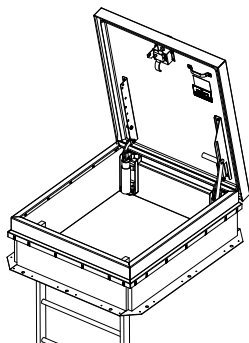
MODELS

| MODEL | DESCRIPTION | DIMENSION | MATERIAL + FINISH |
|-----------|------------------|-----------------|--------------------|
| FP-GRPLG | Edge Mount Post | 42" | Steel, Powder Coat |
| FP-GRF60 | Fixed Rail* | 5' | Steel, Powder Coat |
| FP-GRF96 | Fixed Rail* | 8' | Steel, Powder Coat |
| FP-GRF118 | Fixed Rail* | 9'-10" | Steel, Powder Coat |
| FP-GRA43 | Adjustable Rail* | 2'-5" to 3'-9" | Steel, Powder Coat |
| FP-GRA70 | Adjustable Rail* | 3'-9" to 5'-10" | Steel, Powder Coat |
| FP-GRA120 | Adjustable Rail* | 5'-10" to 10' | Steel, Powder Coat |
| FP-GRC12 | Corner Rail* | 12" | Steel, Powder Coat |

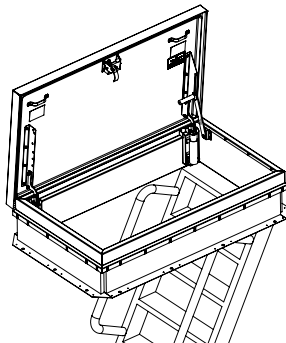
*Note: Rails and corners are sold in sets of 2.



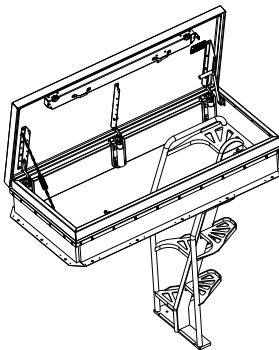
Access Types



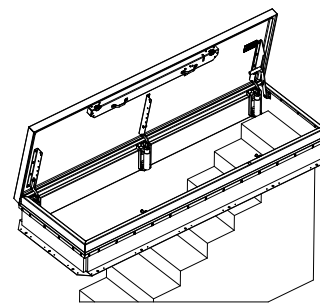
Ladder



Ship Stair



Alternating Tread Stair



Service Stair

Lock (Roof Hatch) OPTIONS



Detention Lock



Mortise Operated
Deadbolt

Additional locks and options available, call
1.888.412.3726 for more information.

| MODEL | TYPE | BRAND | DESCRIPTION | LOCK ACCESS |
|-------|-----------|--------------------------------|--------------------------|---------------------|
| D11 | Detention | Brinks 7016 | Keyed Lock | Interior + Exterior |
| D5A | Detention | Southern Steel 1010AM | Prep Only | Interior + Exterior |
| D2A | Detention | Southern Steel 1010A | Prep Only | Interior Only |
| D12 | Detention | Brinks 7016 | Keyed Lock | Interior Only |
| MS1 | Mortise | Schlage Cylinder/Deadbolt | Keyed Lock | Interior + Exterior |
| MS2 | Mortise | Schlage Cylinder/Deadbolt | Keyed Lock | Interior Only |
| MB4 | Mortise | Best Cylinder/Schlage Deadbolt | Non-Keyed w/Plastic Core | Interior + Exterior |

Operation (Smoke Vent) OPTIONS

OPENING



Fusible Link



Pneumatic
Actuator



Electrical



Pull Handle
(External & Internal)

CLOSING



Rooftop Close
R



Manual Winch
W



Linear Actuator
A

SECURITY



Door Position
Sensor OP1

Note: Also available on Roof Hatches

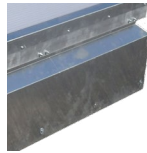
Curb OPTIONS



Single Wall
1



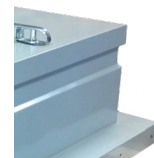
Double Wall
2



Curb Mount
3



No Counterflash
4



Apron Mount
5

CURB HEIGHT

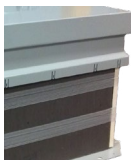


6 inch - 48 inch
H6 - H48

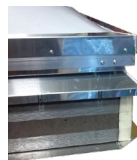
PITCH CORRECTION



Match Roof Pitch
P__



1 inch Polyiso
IPP



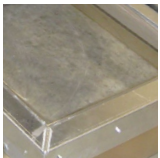
2 inch Polyiso
IRR

VENTILATION



Louvered Curb
V33

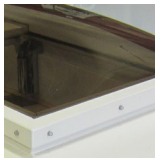
Dome (Roof Hatch + Smoke Vent) OPTIONS



Clear
(Standard)



White
LPW

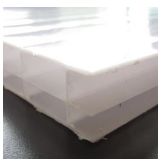


Bronze
LPZ

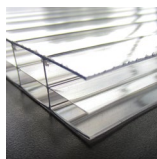
| COLOR | GLAZING | LIGHT TRANSMISSION | SOLAR FACTOR | R-VALUE |
|-------------|---------|--------------------|--------------|---------|
| Clear | Single | 92% | 85% | 1.25 |
| White | Single | 56% | 56% | 1.25 |
| Bronze | Single | 27% | 35% | 1.25 |
| Clear/Clear | Double | 92% | 85% | 2.0 |
| Clear/White | Double | 56% | 56% | 2.0 |

Note: Clear single glazing is the standard option, other options have additional charges and may require longer lead times.

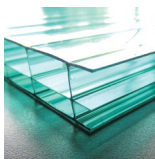
Multi-Wall (Smoke Vent) OPTIONS



White
(Standard)



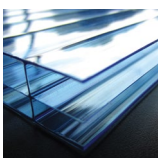
Clear
LMC



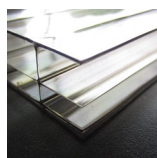
Green
LMG

| COLOR | LIGHT TRANSMISSION | SOLAR FACTOR | SHADING COEFFICIENT |
|--------|--------------------|--------------|---------------------|
| Clear | 74% | 75% | 0.86 |
| White | 52% | 63% | 0.72 |
| Bronze | 37% | 57% | 0.65 |
| Blue | 45% | 65% | 0.74 |
| Green | 42% | 60% | 0.69 |

Note: White is the standard color, all other colors have additional charges and may require longer lead times.



Blue
LMB



Bronze
LMZ

Powder Coat

FINISH OPTION

Nystrom's polyester based powder coatings demonstrate superior gloss and color retention in a variety of outdoor environments. Powder coat provides outstanding corrosion resistance and exhibits excellent mechanical properties.

APPLICATION Steel or Aluminum

WARRANTY 5 year

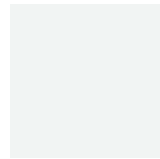
NOTE Red Oxide and High Reflectance White are the base colors of Roof Hatches and Smoke Vents, all other colors have additional charges and may require longer lead times.

Custom colors available, call 800.547.2635 for more information.

STOCK COLORS



ANSI 70 Gray
FP1



High Reflectance
White FP44

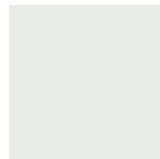


Red Oxide
FP2

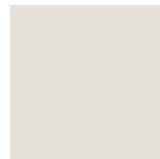


Safety Yellow
FP48

STANDARD COLORS *Readily available, but not stocked by Nystrom.*



Coastal White
FP68



Bone White
FP3



Sandstone
FP5



Sierra Tan
FP8



Colonial Red
FP20



Dark Bronze
FP14



Charcoal Gray
FP7



Super Black
FP4

SPECIAL ORDER *Common industry colors, special order.*



Fine Ivory
FP13



Seawolf
FP15



Tan
FP17



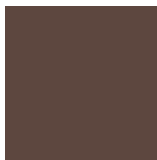
Slate Gray
FP6



River Rouge
FP21



Brick Red
FP19



Brown
FP18



Military Blue
FP10



Arcadia Green
FP23



Hemlock Green
FP24



Forest Green
FP25



Teal
FP22

This color chart is for reference only and is not to be used for final color / material matching. Nystrom is not responsible or liable for color matches made with this chart.

Anodize

FINISH OPTION

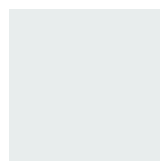
Protective and decorative anodizing applied to aluminum creates a corrosion resistant finish.

The clear finish (FA1) uses sulfuric Class II coating with a 0.4-0.7 mil thickness.

The clear finish (FA2) and integral color uses Duranodic with 0.7 mil and thicker.

APPLICATION Aluminum

WARRANTY 5 year



Clear
FA1 / FA2



Champagne
FA3



Light Bronze
FA4



Medium
Bronze FA5



Dark Bronze
FA6



Extra Dark
Bronze FA7



Black
FA8



Copper
Anodize FA9

Trinar®

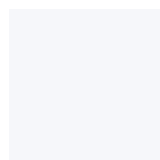
FINISH OPTION

Trinar® is a high performance fluoropolymer coating with 70% Polyvinylidene Fluoride (PVDF) and provides maximum resistant against color fade and chalking. The most durable and long lasting finish in the industry; meets or exceeds AAMA 620/621 and AAMA 2605.

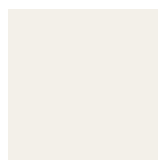
APPLICATION Aluminum

WARRANTY 10 year (standard) or 20 year

STANDARD COLORS



Polar White
FK80



Bone White
FK81



Taupe
FK82



Dove Gray
FK83



Slate Gray
FK84



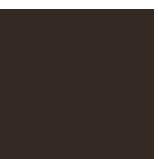
Galaxy Blue
FK85



Forest Green
FK86



Autumn
FK87

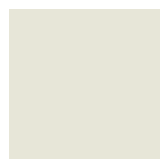


Medium
Bronze FK88



Black
FK89

SPECIAL ORDER *Common industry colors, special order.*



White Stone
FK90



Surrey Beige
FK91



Sandstone
FK92



Medium Taupe
FK93



Seal Brown
FK94



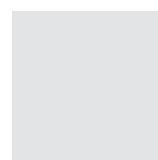
Milano Blue
FK95



Aged Copper
FK96



River Rouge
Red FK96



Bright Silver
FK98



Copper
FK99

Visit www.nystrom.com for the latest version
of this document and more information.



9300 73rd Avenue North
Minneapolis, MN 55428

Phone (800) 547-2635
Fax (800) 317-8770

