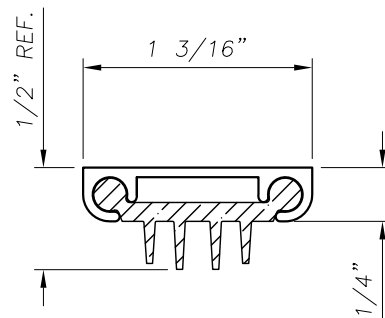


COMPANY:
ACCOUNT#
ADDRESS:
ADDRESS:
PHONE:
FAX:
CONTACT:

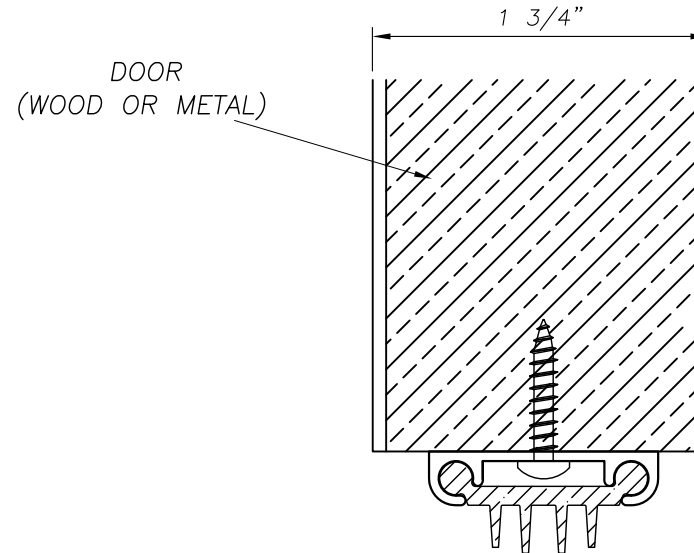
REVISIONS			
REV.	DESCRIPTION	DATE	APPR'D



312V DOOR SHOE
PROFILE VIEW

AVAILABLE GASKETS:
V = VINYL (GRAY)


ALUMINUM FINISHES:
STANDARD IS A = CLEAR
DKB = DARK BRONZE
PLEASE REFER TO NGP CATALOG



INSTALLED VIEW

NOTE: #6 X 3/4" STAINLESS STEEL
SHEET METAL SCREWS FURNISHED.
SCREW HOLES SLOTTED FOR ADJUSTMENT.

TOLERANCE = ALUMINUM ASSOCIATION AND GASKET
MANUFACTURER'S STANDARDS.

		NATIONAL GUARD PRODUCTS, INC. 4985 EAST RAINES ROAD MEMPHIS, TN 38118 PHONE (800) 647-7874 FAX (800) 255-7874			
		TITLE <p style="text-align: center;">312V</p>			
DRAWN BY: DANNY TOMPKINS		SIZE A	FSCM NO.	DWG NO. <p style="text-align: center;">1</p>	REV A
SCALE: FULL		DATE: 12/26/12		SHEET: 1 OF 1	