



SLSSI-6

Stainless Steel Sliding Door Hardware — Barn Door Top Mount

PRODUCT CUT SHEET

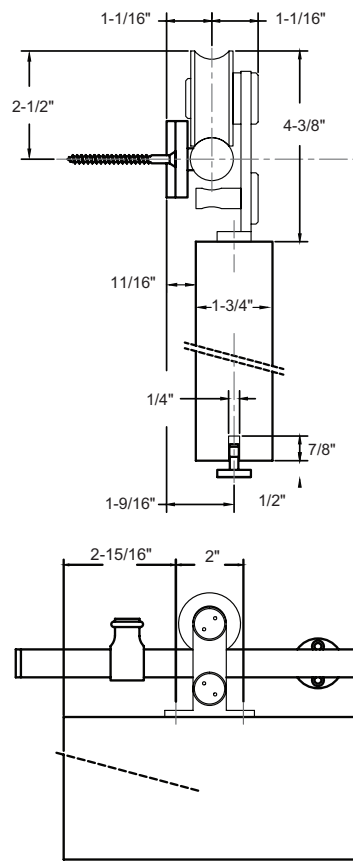
Top Mount Round Track System — Track Length 78 3/4"

- Fits 1" to 2" Thick Door Panel
- Brushed Stainless Steel 304
- Side Wall Mount
- Nylon Coated Stainless Steel Wheels for Smooth Operation
- For Sliding Doors up to 220 lbs. Each
- Meets ADA Push Force Requirements
- 5-Year Warranty
- Order Two Sets for Bi-Parting Applications

Complete Kits Include:

- | | |
|-------------|-----------------|
| (1) Track | (2) Door Stops |
| (2) Hangers | (1) Floor Guide |

SLSSI-6 includes: (5) Wall Attachments

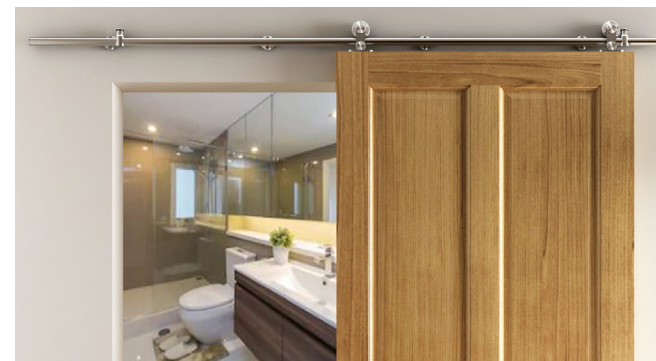


PROJECT:

SUBMITTED BY:

DATE:

NOTES:



NGP-SLI-SLSSI-6-PCS-0723-A

NGP MEMPHIS
4985 East Raines Road
Memphis, TN 38118
orders@ngp.com

NGP VEGAS
4584 Calimesa Street
Las Vegas, NV 89115
vegasorders@ngp.com

ngp.com
1-800-NGP-RUSH