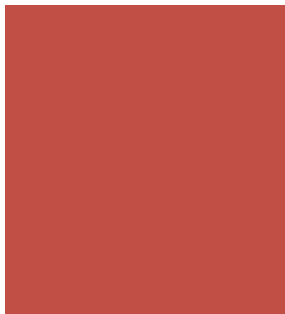
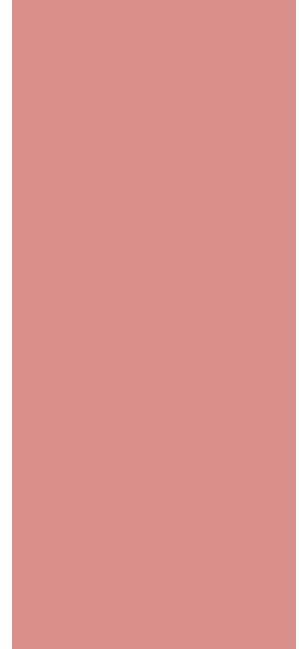
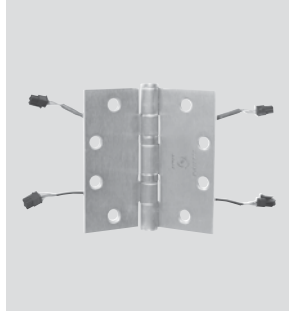
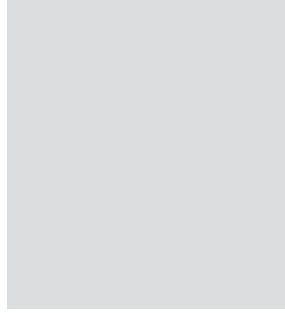


Architectural Door Accessories

ASSA ABLOY

The global leader in
door opening solutions



McKinney Condensed Catalog



Contents

Technical References.....	3
Full & Half Mortise Hinges.....	4-7
Full & Half Surface Hinges.....	7-8
Custom Hinges	8-9
MacPro Hinges	10
StormPro Hinges	10
Decorative Hinges	11
Spring Hinges	12-13
Security Hinges.....	14
Specialty Hinges & Accessories	15
Pocket & Pivot Hinges	15
Aluminum Continuous Hinges...	16
Stainless Steel Continuous Hinges.....	17
Full Mortise Electric Hinges ...	18-19

McKinney is ASSA ABLOY's line of high quality architectural hinges for commercial use. McKinney joined the ASSA ABLOY family of products in 1996. Under the ASSA ABLOY banner, we have greatly expanded the research and development, and manufacturing capabilities of this product line to have the most impact on improving custom hinge manufacturing.

A variety of materials and hinge types can be custom manufactured in our Berlin, CT plant, including the ElectroLynx® hinges and Power over Ethernet (PoE) hinges. For more information on custom manufactured hinges, call ASSA ABLOY at 1-800-346-7707.

Innovation

To support today's need for electronic security applications, we have developed a variety of electric hinges used in remote door monitoring and access control systems, and received a patent on the Power over Ethernet (PoE) hinge. In addition, by combining McKinney hinges with other ASSA ABLOY Group products, we can offer StormPro tornado resistant solutions.

Decorative Hinges

The McKinney line of decorative architectural hinges comes with special tips and finishes. Designed to suite with hardware from ASSA ABLOY Group brands, these commercial decorative hinges open up a whole new world of design options for your door openings.

LEED Certification

We can help to achieve prerequisites and accumulate points in several categories and credit areas of LEED. For further information, please call 1-800-346-7707 or refer to our website www.McKinneyhinge.com.

Sales & Support

The McKinney product line is represented by the ASSA ABLOY Door Security Solutions team.

Phone: 1-800-DSS-EZ4U (800-377-3948)
 Address: 110 Sargent Drive, New Haven, CT 06511
 Web site: www.assaabloydss.com
 Email: Contact your local ASSA ABLOY Door Security Solution Representative via e-mail by going to www.assaabloydss.com and clicking on "Sales Support".

Customer Service Representatives are available during regular business hours at 1-800-346-7707 or email customerservice@McKinneyhinge.com. The website is available 24/7 with the current catalogs, sell sheets and the most up-to-date templates.

The McKinney product line is offered with improved lead times through partnerships with other ASSA ABLOY facilities. A number of popular items are stocked and ready to ship from warehouses in Ventura CA, Pomona CA, Mason City IA, and Berlin CT. In addition, over 400 stock items are included in a 3-day QuickShip Program from the Berlin, CT plant.

Director of Operations:
 Tom Naples, 860-828-7215
tom.naples@assaabloy.com

Technical Product Support:
 Ed Soloski, 860-828-7221
ed.soloski@assaabloy.com

Visit www.McKinneyhinge.com

ASSA ABLOY

The global leader in
door opening solutions

800-346-7707 | www.mckinneyhinge.com
 Check the web site for the up-to-date catalog

McKinney is a brand associated with Corbin Russwin, Inc., an ASSA ABLOY Group company. Copyright © 2006-2017, Corbin Russwin, Inc. All rights reserved. Reproduction in whole or in part without the express written permission of Corbin Russwin, Inc. is prohibited.

Technical References

Recommended Size of Hinges Per Door, Either Wood or Metal

Door Thickness In. (mm)	Width In. (mm)	Hinge Height In. (mm)	Gauge
1 ³ / ₈ " (35)	up to 36" (914)	3 ¹ / ₂ " (89)	.123
1 ³ / ₈ " (35)	over 36" (914)	4" (102)	.130
1 ³ / ₄ " (44)	up to 36" (914)	4 ¹ / ₂ " (114)	.134
1 ³ / ₄ " (44)	36" - 48" (914 - 1219)	5" (127)	.146
1 ³ / ₄ " (44)	over 48" (1219)	6" (152)	.160
2" 2 ¹ / ₂ " (51-64)	up to 42" (1067)	5" (127)	.190
2" 2 ¹ / ₂ " (51-64)	over 42" (1067)	6" (152) HW	.203

Expected Frequency of Door Operation

Door	Expected Daily Cycles	Frequency Yearly	
Commercial			
Commercial Store Entrance	5,000	1,500,000	High
Office Building Entrance	4,000	1,200,000	
Theatre Entrance	1,000	450,000	
School Entrance	1,250	225,000	
School Restroom Door	1,250	225,000	
Store or Bank Entrance	500	150,000	Average
Office Building Restroom Door	400	118,000	
School Corridor Door	80	15,000	
Office Building Corridor Door	75	22,000	
Store Restroom Door	60	18,000	
Residential			
Entrance	40	15,000	Low
Restroom Door	25	9,000	
Corridor Door	10	3,600	
Closet Door	6	2,200	

NOTE: McKinney recommends that bearing hinges be used on all above categories other than residential. One Cycle = one complete opening and closing.

Recommended Number of Hinges Per 3'0" Wide Door*, Either Wood or Metal

Door Height In. (mm)	Number of Hinges per Door
Up to 60" (1524)	2
60" to 90" (1524 to 2286)	3
90" to 120" (2286 to 3048)	4

* Consult factory for doors wider than 3'0". Doors up to 60" in height shall be provided with two hinges and an additional hinge for each additional 30" of door height or fraction thereof. The distance between hinges shall be permitted to exceed 30". Where spring hinges are used, a minimum of two must be provided.

Standards

- Template hinges are made in sizes, gauges, and with screw holes located to conform to ANSI/BHMA A156.7 and U.S. Government standards CS9-65 and SDI. Templates are available on McKinney's Website at www.McKinneyhinge.com, or upon request
- McKinney finishes meet or exceed ANSI/BHMA A156.1, A156.18 and BHMA 1301 standards for materials and finishes
- McKinney bearing hinges meet or exceed the testing requirements of NFPA-80 Table 6.4.3.1 2010 Builders Hardware
- McKinney spring hinges meet or exceed testing requirements of ANSI/BHMA A156.17 and are UL listed in both the USA and Canada
- McKinney continuous hinges meet or exceed testing requirements of ANSI/BHMA A156.26 and are UL listed in both the USA and Canada

* Heavy weight hinges should be used on all heavy weight doors or those exposed to high frequency use. Five knuckle heavy weight hinges have four bearings. The following gauges of metal apply:
 Heavy weight 4¹/₂" (114) high = .180 gauge
 Heavy weight 5" (127) high = .190 gauge
 Heavy weight 6" (152) high = .203 gauge

NOTE: Five knuckle 8" (203) high hinges have six bearings.

Door Weights Per Square Foot

Based upon 3'0" x 7'0" Door Size

Hollow Metal Door Weights by Gauge

	Lbs. Per Square Foot
20 Gauge	4
18 Gauge	5
16 Gauge	6
14 Gauge	7

Door Weights Per Square Foot

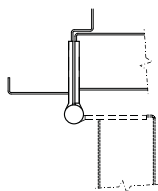
Based upon 3'0" x 7'0" Door Size

Wood Door Weights by Door Thickness

	Lbs. Per Square Foot	
	1 ³ / ₈ " door	1 ³ / ₄ " door
Particle/Mineral Core	4.75	5.25
Stave Core Wood	3.75	4.25
Hollow Core Wood	1.3	1.5

Full Mortise Hinges

MODERNE Two Knuckle Full Mortise

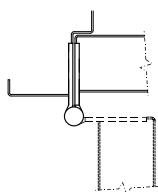


Offers the most security in a standard hinge. The bearing hinges have a stainless steel pin and anti-friction bushing in the door leaf, which provides additional protection against vertical and lateral wear.

- The slim barrel Moderne two knuckle hinge is available in steel and non-ferrous base
- Standard and heavy weight
- Pins in all bearing hinges are stainless steel
- Decorative tips available
- Standard hinges are packed with all machine by all wood screws
- Available non-removable door (NRD) hinges have a set screw in the barrel of one hinge in the set of 3
- By design, pins are non-rising, non-removable and tamper protected by a flush, non-removable cap at the end of the barrel. A door can not be removed when in the closed position, thus affording maximum security. Intermediate hinges can be ordered opposite hand and installed upside down, to inhibit removal of the door in an open position
- Two knuckle hinges are handed

Type	Size In. (mm)	Standard Weight Bearing			Heavy Weight Bearing		
		Gauge	Stainless Steel	Steel	Gauge	Stainless Steel	Steel
2 Knuckle	4" x 4" (102 x 102)	.130	TA3331	TA2731	–	–	–
	4 1/2" x 4" (114 x 102)	.134	TA3331	TA2731	.180	TA3350	TA3750
	4 1/2" x 4 1/2" (114 x 114)	.134	TA3331	TA2731	.180	TA3350	TA3750
	5" x 4" (127 x 102)	.146	TA3331	TA2731	.190	TA3350	TA3750
	5" x 4 1/2" (127 x 114)	.146	TA3331	TA2731	.190	TA3350	TA3750
	5" x 5" (127 x 127)	.146	TA3331	TA2731	.190	TA3350	TA3750

Three Knuckle Full Mortise



Bearing hinges have concealed vertical and lateral thrust twin anti-friction type bearings at both joints.

- Pins in all non-ferrous bearing hinges are stainless steel
- Pins in all ferrous hinges are steel
- Pins in all hinges are non-rising type
- Standard hinges are packed with all machine by all wood screws
- Decorative tips available
- Available in 3K-ET style, furnished with button tips (same pin and plug as five knuckle hinge)

Type	Size In. (mm)	Standard Weight Bearing			Heavy Weight Bearing		
		Gauge	Brass/ Stainless Steel	Steel	Gauge	Brass/ Stainless Steel	Steel
3 Knuckle	3 1/2" x 3 1/2" (89 x 89)	.123+	TA314	TA714	–	–	–
	4" x 4" (102 x 102)	.130+	TA314	TA714	–	–	–
	4 1/2" x 4" (114 x 102)	.134	TA314	TA714	.180+	TA386	TA786
	4 1/2" x 4 1/2" (114 x 114)	.134	TA314	TA714	.180	TA386	TA786
	5" x 4" (127 x 102)	.146+	TA314	TA714	.190+	TA386	TA786
	5" x 4 1/2" (127 x 114)	.146+	TA314	TA714	.190	TA386	TA786
	5" x 5" (127 x 127)	.146+	TA314	TA714	.190+	TA386	TA786
When door is beveled on hinge side specify handing required			TA5314	TA5714		TA5386	TA5786

+Not available in brass

*Not available in stainless steel

ASSA ABLOY

The global leader in
door opening solutions

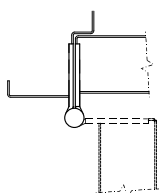
800-346-7707 | www.mckinneyhinge.com

Check the web site for the up-to-date catalog

McKinney is a brand associated with Corbin Russwin, Inc., an ASSA ABLOY Group company. Copyright © 2006-2017, Corbin Russwin, Inc. All rights reserved. Reproduction in whole or in part without the express written permission of Corbin Russwin, Inc. is prohibited.

Full Mortise Hinges

Five Knuckle Full Mortise



Bearing hinges are furnished with an oil impregnated (TA) bearing on hinges up to 5" high.

- Pins in all non-ferrous bearing hinges are stainless steel
- Pins in all ferrous hinges are steel
- Pins in all hinges are non-rising type
- Standard hinges are packed with all machine by all wood screws
- Concealed bearings (TCA are available in 4 1/2" and 5" only)
- Ball bearings (TB are an available option)

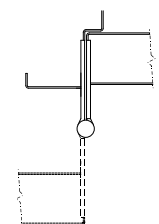
Type	Size In. (mm)	Plain Bearing		Standard Weight Bearing			Heavy Weight Bearing		
		Gauge	Steel	Gauge	Brass/ Stainless Steel	Steel	Gauge	Brass/ Stainless Steel	Steel
5 Knuckle	3 1/2" x 3 1/2" (89 x 89)	.123	T2714	.123+	TA2314	TA2714	–	–	–
	4" x 4" (102 x 102)	.130	T2714	.130+	TA2314	TA2714	–	–	–
	4 1/2" x 4" (114 x 102)	.134	T2714	.134	TA2314	TA2714	.180	T4A3386	T4A3786
	4 1/2" x 4 1/2" (114 x 114)	.134	T2714	.134	TA2314	TA2714	.180	T4A3386	T4A3786
	5" x 4 1/2" (127 x 114)	.146	T2714	.146+	TA2314	TA2714	.190	T4A3386	T4A3786
	5" x 5" (127 x 127)	.146	T2714	.146+	TA2314	TA2714	.190+	T4A3386	T4A3786
	6" x 6" (152 x 152)	.160	T2714	.160+	TA2314	TA2714	.203+	T4A3386	T4A3786
	8" X 6" (203 X 152)	–	–	–	–	–	.203+^	T4A3386	T4A3786
	8" X 8" (203 X 203)	–	–	–	–	–	.203+^	T4A3386	T4A3786
When door is beveled on hinge side specify handing required			T4714		TA4314	TA4714		T4A4386	T4A4786

* Not available in stainless steel

+ Not available in brass

^ 8" x 6" (203 x 152) and 8" x 8" (203 x 203) hinges have six bearings and seven knuckles

Wide Throw Full Mortise



- For use when necessary for door to open around a large reveal

Type	Size In. (mm)	Gauge	Standard Weight Bearing			Heavy Weight Bearing			
			Door Thickness In. (mm)	Steel	Stainless Steel	Gauge	Door Thickness In. (mm)	Steel	Stainless Steel
5 Knuckle	4 1/2" x 6" (114 x 152)	.134	1 3/4" (44)	TA2798	TA2398	.180	1 3/4" (44)	T4A3786	T4A3386
	4 1/2" x 7" (114 x 178)	.134	1 3/4" (44)	TA2798	TA2398	.180	1 3/4" (44)	T4A3786	T4A3386
	4 1/2" x 8" (114 x 203)	.134	1 3/4" (44)	TA2798	TA2398	.180	1 3/4" (44)	T4A3786	T4A3386
	5" x 7" (127 x 178)	.146	1 3/4" (44)	TA2798	TA2398	.190	1 3/4" (44)	T4A3786	T4A3386
	5" x 8" (127 x 203)	.146	1 3/4" (44)	TA2798	TA2398	.190	1 3/4" (44)	T4A3786	T4A3386
When door is beveled on hinge side specify handing required			–	TA4798	TA4398	–		T4A4786	T4A4386

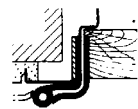
Full Mortise Hinges

Swing Clear Full Mortise



Hinge allows maximum clearance for passage of beds, tables and other equipment through doorway for barrier free access.

- Packed with all wood and all machine screws
- Available with Hospital Tips
- Available with CC or QC option for Electric Hinges



Type	Standard Weight Bearing					Heavy Weight Bearing				
	Size In. (mm)	Gauge	Door Thickness In. (mm)	Steel	Stainless Steel	Size In. (mm)	Gauge	Door Thickness In. (mm)	Steel	Stainless Steel
3 Knuckle	–	–	–	–	–	5" (127)	.190	1 3/4" (44)	TA795	–
When door is beveled on hinge side, specify handing required				–	–	–	–	–	TA5795	–
5 Knuckle	4 1/2" (114)	.134	1 3/4" (44)	TA2895	TA2395	4 1/2" (114) 5" (127)	.180 .190	1 3/4" (44) 1 3/4" (44)	T4A3795 T4A3795	T4A3395 T4A3395
When door is beveled on hinge side, specify handing required				TA4895	TA4395	–	–	–	T4A4795	T4A4395

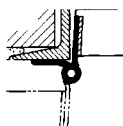
Half Mortise Hinges

Half Mortise



Door leaf is mortised into the edge of the door, and jamb leaf is surface applied into jamb.

- Furnished with a NRP which allows the hinge to be reversible
- Supplied with all machine screws



Type	Size In. (mm)	Door Thickness In. (mm)	Standard Weight Bearing			Heavy Weight Bearing		
			Gauge	Stainless Steel	Steel	Gauge	Stainless Steel	Steel
5 Knuckle	4 1/2" (114)	1 3/4" (44)	.134	TA3374	TA2774	.180	T4A3384	T4A3784
	5" (127)	1 3/4" (44)	.146	TA3374	TA2774	.190	T4A3384	T4A3784
	6" (152)	1 3/4" (44)	–	–	–	.203	T4A3384	T4A3784
	6" (152)	2 1/4" (57)	–	–	–	.203	T4A3384	T4A3784
When door is beveled on hinge side, specify handing required			–	TA4374	TA4774	–	T4A4384	T4A4784

ASSA ABLOY

The global leader in
door opening solutions

800-346-7707 | www.mckinneyhinge.com
Check the web site for the up-to-date catalog

McKinney is a brand associated with Corbin Russwin, Inc., an ASSA ABLOY Group company. Copyright © 2006-2017, Corbin Russwin, Inc. All rights reserved. Reproduction in whole or in part without the express written permission of Corbin Russwin, Inc. is prohibited.

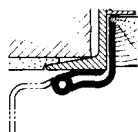
Half Mortise Hinges

Swing Clear Half Mortise



Swing clear hinges allow for maximum clearance for passage of beds, tables and other equipment.

- Door leaf is mortised into the edge of the door
- Jamb leaf is surface applied into jamb
- Hospital tips available
- Furnished with a NRP which allows the hinge to be reversible
- Supplied with wood and machine screws



Heavy Weight Bearing				
Type	Size In. (mm)	Gauge	Door Thickness In. (mm)	Steel
5 Knuckle	5" (127)	.190	1 3/4" (44)	T4A3789
When door is beveled on hinge side, specify handing required				T4A4789

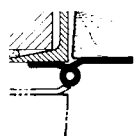
Full Surface Hinges

Full Surface



Door leaf is applied to the surface of the door with grommet nuts and bolts.

- Narrow leaf is applied to the surface of the jamb with machine screws



Standard Weight Bearing				Heavy Weight Bearing			
Type	Size In. (mm)	Gauge	Stainless Steel	Steel	Gauge	Stainless Steel	Steel
3 Knuckle	4 1/2" (114)	.134	TA371	TA771	.180	TA381	TA781
	5" (127)	.146	TA371	TA771	.190	TA381	TA781
5 Knuckle	4 1/2" (114)	.134	–	TA2771	.180	T4A3381	T4A3781
	5" (127)	.146	–	TA2771	.190	T4A3381	T4A3781
	6" (152)	–	–	TA2771	.203*	T4A3381	T4A3781

* Not available in TCA style

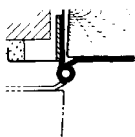
Half Surface Hinges

Half Surface



Mortised into the frame, surface mounted to the door. Used for retrofit applications.

- Machine screws supplied for jambs, thru bolts and grommets on the door
- Furnished with NRP which allows the hinge to be reversible



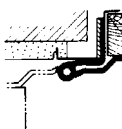
Type	Size In. (mm)	Door Thickness In. (mm)	Gauge	Standard Weight Bearing		Gauge	Heavy Weight Bearing	
				Stainless Steel	Steel		Stainless Steel	Steel
5 Knuckle	4 1/2" (114)	1 3/4" (44)	.134	TA3372	TA2772	.180	T4A3382	T4A3782
	5" (127)	1 3/4" (44)	.146	TA3372	TA2772	.190	T4A3382	T4A3782
	6" (152)	1 3/4" (44)	—	—	—	.203*	T4A3382	T4A3782
	6" (152)	2 1/4" (57)	—	—	—	.203*	T4A3382	T4A3782

Swing Clear Half Surface



Swing clear hinges allow for maximum clearance for passage of beds, tables and other equipment

- Door leaf is mortised into the edge of the door
- Jamb leaf is surface applied into jamb



Heavy Weight Bearing				
Type	Size In. (mm)	Gauge	Door Thickness In. (mm)	Steel
5 Knuckle	5" (127)	.190	1 3/4" (44)	T4A3796

Custom Hinges

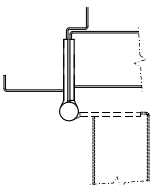
The McKinney facility in Berlin, CT can manufacture a variety of custom hinges including special hole patterns, special sizes, special swages. Consult factory for availability, call 860-828-7221.

Full Mortise Interim Hinges



Recommended for installations where door and frame are prepped for two different size hinges.

- For new or retrofit installations
- An equal amount is trimmed from the top and bottom of the leaf
- Interim hinges are supplied with a no hole bottom plug and the pin is held in place by an NRP set screw which allows the hinge to be reversible
- Available in both standard (TA2714; TA2314) and heavy weight (T4A3786; T4A3386)
- Consult factory for other sizes



Size In. (mm)	Standard Weight Bearing		Heavy Weight Bearing	
	Gauge	Steel	Gauge	Steel
5" x 4 1/2" (114 x 114)	.146	TA2714	.190	T4A3786
5" x 4 1/2" (127 x 114)	.146	TA2314	.190	T4A3386

ASSA ABLOY

The global leader in
door opening solutions

800-346-7707 | www.mckinneyhinge.com
Check the web site for the up-to-date catalog

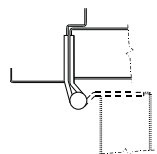
McKinney is a brand associated with Corbin Russwin, Inc., an ASSA ABLOY Group company. Copyright © 2006-2017, Corbin Russwin, Inc. All rights reserved. Reproduction in whole or in part without the express written permission of Corbin Russwin, Inc. is prohibited.

Custom Hinges

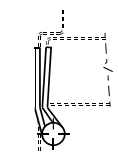
Raised Barrel Hinges



Standard weight raised barrel hinges are recommended for use on average frequency and/or medium weight wood or metal doors where the door is set in a deep revealed frame. Heavy weight raised barrel hinges are recommended for use on high frequency and/or heavy wood or metal doors where the door is set in a deep revealed frame.



Square Edge Application



Beveled Edge Application

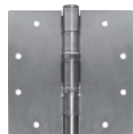
- Standard weight raised barrel hinges are supplied with a no hole bottom plug and the pin is held in place by an NRP set screw which allows the hinge to be reversible. Specify RB-TA4714/RB-TA4314 for doors beveled on hinge side
- Heavy weight raised barrel hinges are supplied with a no hole bottom plug and the pin is held in place by an NRP set screw which allows the hinge to be reversible. Specify RB-T4A4786/RB-T4A4386 for doors beveled on hinge side
- Door leaf mortised into door
- Frame leaf may be mortised or surface applied
- Reversible Hinge
- Available in QC or CC Electric Hinge Options

Size In. (mm)	Standard Weight Bearing			Heavy Weight Bearing		
	Gauge	Steel	Stainless Steel	Gauge	Steel	Stainless Steel
4 1/2" x 4 1/2" (114 x 114)	.134	RB-TA2714	RB-TA2314	.180	RB-T4A3786	RB-T4A3386

Slip-In Hinge: Type 1 and Type 2



Type 1



Type 2

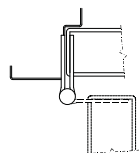
Recommended for use on average frequency and/or medium weight aluminum doors with aluminum frames in schools, hospitals and other public buildings where medium traffic is experienced.

Type 1

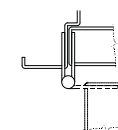
- One leaf has standard punching and countersinking and the other leaf is drilled and tapped so it can be inserted through a slot in the door or frame
- Both leaves are specially swaged to provide 3/16" clearance between leaves when parallel
- Hinges are handed - Indicate hand when ordering
- Packed with wood and machine screws

Type 2

- Both leaves are drilled and tapped so they can be inserted through a slot in the door and frame
- Both leaves are specially swaged to provide 5/16" clearance between the leaves when parallel
- Hinges are non-handed
- Packed with all machine screws



Type 1 Application



Type 2 Application

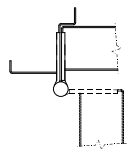
Type	Size In. (mm)	Standard Weight Bearing		
		Gauge	Steel	Stainless Steel
1	4 1/2" x 4" (114 x 102)	.134	TA2714	TA2314
	4 1/2" x 4 1/2" (114 x 114)	.134	TA2714	TA2314
2	4 1/2" x 4" (114 x 102)	.134	TA2714	TA2314
	4 1/2" x 4 1/2" (114 x 114)	.134	TA2714	TA2314

The MacPro® line offers contract grade hinges to get the job done right. High quality and lower prices equal an extraordinary value, ideal when you need large quantities of standard hinges. Five knuckle series and spring hinge series available.

MacPro® Five Knuckle Series



- Plain bearing hinges are for standard weight doors only
- For doors with a closing device, MPB79 bearing hinge must be used
- For heavy weight doors with a closing device, select a MPB68, heavy weight bearing hinge
- MacPro templated hinges are made to conform to ANSI/BHMA 156.1, 156.7

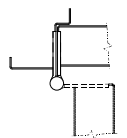


Plain Bearing		Standard Weight Bearing			Heavy Weight Bearing		
Gauge	Steel	Gauge	Stainless Steel	Steel	Gauge	Stainless Steel	Steel
.134	MP79	.134	MPB91	MPB79	.180	MPB99	MPB68

MacPro® Spring Hinge Series



- Coil spring provides dependable closing power
- Two concealed tee bearings for vertical and lateral loads



Heavy Weight Bearing		
Size In. (mm)	Gauge	Steel
4 1/2" x 4 1/2" (114 x 114)	.134	MPS60
4 1/2" x 4 1/2" (114 x 114)	.134	MPB679 Set+

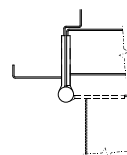
+ Set includes two MPS60 spring hinges and one MPB79 butt hinge

McKinney StormPro® Tornado Resistant Hinges



Built to withstand the extreme wind speeds and flying debris associated with severe weather conditions, McKinney StormPro® hinges are part of the integrated unit when used with CECO StormPro® 361, Curries StormPro® 361 and Baron F-5 doors and frames, along with other StormPro® hardware by ASSA ABLOY Group brands.

- Use for the common flush door/frame/wall application
- Fire rated thru 3 hours
- Packed with stainless steel machine screws
- Available with QC Electric Hinge option



Application

	Heavy Weight Bearing		
Size In. (mm)	Gauge	Stainless Steel	Steel
4 1/2" x 4 1/2" (114 x 114)	.180	SP3386	SP3786
5" x 4 1/2" (127 x 114)	.190	SP3386	SP3786



StormPro® Tornado resistant hinges should be specified and ordered as a complete integrated unit including the frame and door along with other StormPro® hardware

ASSA ABLOY

The global leader in
door opening solutions

800-346-7707 | www.mckinneyhinge.com
Check the web site for the up-to-date catalog

McKinney is a brand associated with Corbin Russwin, Inc., an ASSA ABLOY Group company. Copyright © 2006-2017, Corbin Russwin, Inc. All rights reserved. Reproduction in whole or in part without the express written permission of Corbin Russwin, Inc. is prohibited.

Decorative Hinges

Decorative architectural hinges designed to suite with hardware from the ASSA ABLOY Group brands. Open up a whole new world of design options for your door openings.

Two Knuckle Hinge / Three Knuckle Hinge



- Standard weight
- 4 x 4, 4.5 x 4, 4.5 x 4.5, 5 x 5 sizes available
- Electrified options available
 - ElectroLynx® quick connect
 - Concealed circuit
- Two knuckle are handed
- Three knuckle are non-handed

Tips



ST –
Steeple Tip



BT –
Ball Tip

- Steeple Tip and Ball Tip are available on 3 knuckle and 5 knuckle hinges
- Flat Tip and Round Tip are available on 2 knuckle and 3 knuckle hinges



FT –
Flat Tip



RT –
Round Tip



GT –
Grooved Tip



LT –
Lined Tip

Split Finishing



- Split finishing, where the hinge and tips are different finishes, can create a dramatic look by mixing dark with light or satin with polished
- Available on 2, 3, and 5 knuckle hinges

the good design studio

The Good Design Studio - your resource for beautiful doors, frames and hardware from ASSA ABLOY Group brands. Visit www.thegooddesignstudio.com to learn more.



CORBIN RUSSWIN 25M
and SARGENT REM lever



McKINNEY 2 knuckle hinge
with square end tips



ROCKWOOD door pull,
door stop and coat hook

Specialty Hinges and Accessories

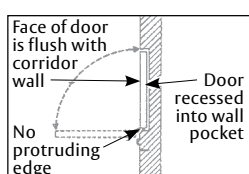
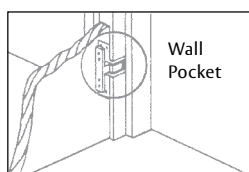
Pocket Hinges



PH-4

Pivot style fully mortised, semi-concealed hinges constructed of investment cast steel, with two thrust bearings for vertical loads, and roller bearings for lateral support. For standard 2" (51) frame.

UL listed (USA and Canada) for use on both hollow metal or steel covered composite fire doors rated up to three hours, and wood core type fire doors rated 20 minutes. Meets material and performance requirements of NFPA 80 and ANSI 156.1.



Number of Hinges Required per Door	Maximum Door Size Ft. (mm)	Maximum Door Size Lbs. (kg)
2	3'0" x 7'0" (914 x 2134)	150 (68)
3	3'0" x 7'0" (914 x 2134)	250 (113)
4	4'0" x 7'0" (1219 x 2134)	350 (159)

Size of Wood Screws	Gauge	Each per Box	Size of Machine Screws
1 1/2" x 12	.187	3	3/4 x 12-24

800-346-7707 | www.mckinneyhinge.com

Check the web site for the up-to-date catalog

McKinney is a brand associated with Corbin Russwin, Inc., an ASSA ABLOY Group company. Copyright © 2006-2017, Corbin Russwin, Inc. All rights reserved. Reproduction in whole or in part without the express written permission of Corbin Russwin, Inc. is prohibited.

ASSA ABLOY

The global leader in
door opening solutions

Security Hinges

Full Mortise Institutional



Full mortise institutional hinges (prefix HTB) are designed especially for maximum security installations including hospitals, high security schools, institutions, and prisons. Institutional hinges are available in either steel or stainless steel. Available with Torx pin head security machine screws (suffix TXS).

- One piece non-removable pin is held intact by the insertion of two sets of dowels held in double shear into an internally constructed shelf
- Knuckles with tapered hospital tips prevent tampering and removal of pins
- To further enhance its security, this hinge is available with an optional prison safety feature (suffix PSF)
- Single studs projecting from the back of each leaf fit into the hinge reinforcement on jamb and door to prevent shearing of screws
- Consult the factory for additional information regarding our security hinge line which includes additional sizes and electrification of hinge (magnetic monitoring not available with PSF security stud)
- Additional finishes are available in steel
- Ball bearings are supplied as a standard on institutional hinges



Hospital Tip



PSF Security Stud

Size, In. (mm)	Gauge Diameter	Outside Diameter	Stud Projection	Stud	Steel Hinges	Stainless Steel Hinges
4 1/2" x 4 1/2" (114 x 114)	.180	.720 (18)	7/16 (11.1)	1/2" (12.7)	HTB786	HTB386 (32D)
4 1/2" x 4 1/2" (114 x 114)	.180	.720 (18)	7/16 (11.1)	1/2" (12.7)	HTB786 PSF	HTB386 PSF (32D)

NOTE: PSF = prison safety feature

Full Mortise Anchor



Horizontal Frame Leg

Anchor hinges are used in abusive areas in which the door, jamb, and hinges experience unusual strain. All anchor sets consist of the top anchor and two 5" x 4 1/2" (127 x 114) three knuckle full mortise heavy weight hinges. Anchor sets are handed.

- NRP furnished on set as standard. (Set consists of one anchor and two heavy weight full mortise three knuckle hinges)
- Anchor hinges are handed
- Can be swaged for either square edge or beveled (hinge side) edge



TA792 Anchor Hinge Set

Type	Size, In. (mm)	Gauge	Application	Square Edge Door		Beveled Edge Door	
				Steel	Stainless Steel	Steel	Stainless Steel
3 Knuckle	5" x 4 1/2" (127 x 114)	.190	Anchor plate for top of door only	TA791	TA391	TA5791	TA5391
			Anchor plate for top of door and frame header	TA792	TA392	TA5792	TA5392
			Anchor plate for frame header only	TA793	TA393	TA5793	TA5393
			Anchor plate for top of door and frame header	TA794*	TA394*	TA5794*	TA5394*

*Door plate is 4" (102) and are recommended for doors where door holders, door closers, or other hardware present mounting conflicts with the standard hinge anchor plate.

ASSA ABLOY

The global leader in door opening solutions

800-346-7707 | www.mckinneyhinge.com
Check the web site for the up-to-date catalog

McKinney is a brand associated with Corbin Russwin, Inc., an ASSA ABLOY Group company. Copyright © 2006-2017, Corbin Russwin, Inc. All rights reserved. Reproduction in whole or in part without the express written permission of Corbin Russwin, Inc. is prohibited.

Rescue Hardware

Jamb Mount Pivot Set: EP-5J

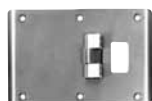
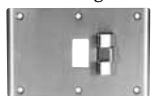


EP-5J

For use on average frequency double acting interior doors in schools, hospitals, institutions, and other public buildings. Header pivot solid brass material. Top door pivot has an oil impregnated porous metal bearing and rounded corners. Bottom jamb bracket solid brass material with $\frac{1}{4}$ " (6) vertical adjustment. Bottom door pivot has an anti-friction bearing unit and rounded corners. Pivot point $1\frac{1}{4}$ " (32) from jamb. Full mortise only on jambs and door.

Number	Maximum Door Weight, Lbs. (kg)	Maximum Door Size Ft. (mm)
EP-5J Jamb Mounted Pivot	up to 125 (57)	3'6" x 8'0" (1067 x 2438)

Combination Strike and Stop: CSS-9

CSS-9
Offset HungCSS-9
Center Hung

Recommended for installations on hospital or nursing home bathroom doors along with McKinney EP-5J. This unit allows center hung or $\frac{1}{8}$ " inset doors to be opened in both directions without damaging the frame.

- Manufactured for use with cylindrical or bored locks
- Available in offset or center hung latch bolt location for frame sizes $5\frac{3}{4}$ ", $5\frac{7}{8}$ " and $6\frac{3}{4}$ "
- Custom units available for frame sizes $3\frac{1}{2}$ " - 10" consult factory for availability
- For use on $1\frac{3}{4}$ " thick doors
- Cannot be used with deadbolts. May not work with mortise locks. Consult the factory for mortise lock application of Corbin Russwin, Sargent and Yale compatibility
- All Combination Strike and Stops are packed with $\frac{1}{2}$ x 8-32 machine screws
- Available in brass material polished and plated

Emergency Door Stop: DS-6



DS-6

For use with McKinney EP-5J pivots in schools, hospitals, institutions, and other public buildings. Used for converting double acting doors, hung on center pivots, to single acting doors.

- Accepted by the New York State Office of Mental Health (OMH) for use in high risk areas in behavioral healthcare settings
- Used to convert double acting doors hung on center pivots to single acting doors
- Emergency release allows door to swing open in the opposite direction
- Mortise only on frame
- Available in brass material polished and plated

Number	Size of Surface Plates In. (mm)	Screws
DS-6	$4\frac{1}{2}$ " x $1\frac{5}{8}$ " (114 x 41)	$\frac{1}{2}$ " x 12-24

Double Lipped Strike: DLS-8



DLS-8

Recommended for installations on hospital or nursing home doors along with the EP5-J and DS-6. This unit allows center hung or $\frac{1}{8}$ " inset doors to be opened in both directions without damaging the frame.

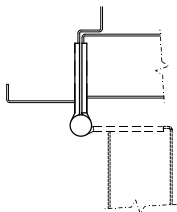
- Manufactured for use with cylindrical or bored locks
- Available in offset or center hung
- Latch bolt location for frame sizes $5\frac{3}{4}$ " and $6\frac{3}{4}$ "
- Custom units available for frame sizes $3\frac{1}{2}$ " - 10" Consult factory for availability
- For use on $1\frac{3}{4}$ " thick doors
- Cannot be used with deadbolts. May not work with mortise locks. Consult the factory for mortise lock application of Corbin Russwin, Sargent and Yale compatibility
- All Combination Strike and Stops are packed with $\frac{1}{2}$ x 8-32 machine screws
- Available in brass material polished and plated

Spring Hinges

Full Mortise Single Acting



Grade 1, surpassing a million cycles



For use on wood or metal doors in apartments, hotels, motels, offices, and other public buildings. Two concealed tee bearings for vertical and lateral loads. Coil spring design provides dependable closing power.

- The 1500 Series has infinite adjustment, and tension can be added or reduced
- Locking screw prevents tampering after tension is set
- NFPA 80 requires a minimum of two spring hinges on labeled doors
- 1502 Now available in reverse action, specify 1502R
- Consult the factory for the TRS security option

Size In. (mm)	Gauge	Door Thickness In. (mm)	Steel		Stainless Steel	
			Single Hinge	Set	Single Hinge	
4" x 4" (102 x 102)	.130	1 3/4" (44)	1502 (Full Mortise)	—	—	
4 1/2" x 4" (114 x 102)	.134	1 3/4" (44)	1502 (Full Mortise)	1522 (Set of 2 1502 spring hinges and 1 springless)	1552 (Full Mortise)	
4 1/2" x 4 1/2" (114 x 114)	.134	1 3/4" (44)	1502 (Full Mortise)			

Applications

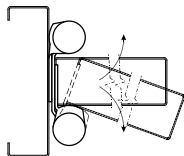
Hinge	Hinges Per Door	Maximum Door Size and Weight			
		Size	Weight, Lbs.	Door Width, Ft.	Door Height, Ft.
1502	3	4" x 4"	125	3'0"	7'0"
1502, 1552	3	4 1/2" x 4"	150	3'0"	7'0"
1502, 1552, 1572*	3	4 1/2" x 4 1/2"	150	3'0"	7'0"
1522	1 Set	4 1/2" x 4"	115	3'0"	7'0"
1522	1 Set	4 1/2" x 4 1/2"	115	3'0"	7'0"

Full Mortise Double Acting



Double acting hinge is designed to be applied directly to the jamb without the use of a hanging strip. Door flange requires a shallow mortise. Springs are made of high grade tempered steel.

- 3" (76), 4" (102), 5" (127) and 6" (152) hinges are for wood doors not weighted with plate glass or heavy hardware
- Hinge capacity decreases as door height increases
- For stock hollow metal doors, use 6" x 4 1/2" (152 x 114)
- 8" (203) 9001 is designed for use on wood or heavy doors of metal construction
- 8" (203) 19001 is designed for use on trucking doorways



Hinge	Size, In. (mm)	Maximum Door Thickness, In. (mm)	2 Hinges Per Door		3 Hinges Per Door		
			Door Width, Ft. (mm)	Weight, Lbs. (kg)	Door Width, Ft. (mm)	Weight, Lbs. (kg)	Door Height, Ft. (mm)
1001	3" (76)	3/4" to 1" (19 to 25)	2'0" (610)	35 (16)	2'8" (813)	40 (18)	5'0" (1524)
1001	4" (102)	7/8" to 1 1/4" (22 to 32)	2'4" (711)	60 (27)	3'0" (914)	75 (34)	6'8" (2032)
1001	5" (127)	1 1/8" to 1 1/2" (29 to 38)	2'8" (813)	65 (29)	3'0" (914)	90 (41)	6'8" (2032)
1001	6" (152)	1 1/4" to 1 3/4" (32 to 44)	2'8" (813)	75 (34)	3'0" (914)	107 (49)	7'0" (2134)
1001	6" x 4 1/2"	1 3/4" (44) (152 x 114)	2'8" (813)	75 (34)	3'0" (914)	107 (49)	7'0" (2134)
9001	8" (203)	1 1/2" to 2" (38 to 51)	3'6" (1067)	100 (45)	4'0" (1219)	143 (65)	7'0" (2134)
19001	8" (203)	1 3/4" (44)	3'6" (1067)	100 (45)	4'0" (1219)	143 (65)	7'0" (2134)

ASSA ABLOY

The global leader in
door opening solutions

800-346-7707 | www.mckinneyhinge.com
Check the web site for the up-to-date catalog

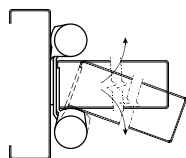
McKinney is a brand associated with Corbin Russwin, Inc., an ASSA ABLOY Group company. Copyright © 2006-2017, Corbin Russwin, Inc. All rights reserved. Reproduction in whole or in part without the express written permission of Corbin Russwin, Inc. is prohibited.

Spring Hinges

Half Surface Double Acting



Application



HS1001 is designed for use on thin plywood doors or gates where screws will not hold in the edge of a door. Does not require a hanging strip.

- Designed for one flange to be applied to the surface of the door and other to the surface of the jamb
- Springs made of high grade tempered steel

		2 Hinges Per Door			3 Hinges Per Door		
Hinge	Size, In. (mm)	Maximum Door Thickness, In. (mm)	Door Width, Ft. (mm)	Weight, Lbs. (kg)	Door Width, Ft. (mm)	Weight, Lbs. (kg)	Door Height, Ft.
HS1001	3" (76)	3/4" to 1" (19 to 25)	2'0" (610)	35 (16)	2'8" (813)	40 (18)	5'0" (1524)
HS1001	4" (102)	7/8" to 1 1/4" (22 to 32)	2'0" (610)	35 (16)	2'8" (813)	40 (18)	5'0" (1524)

Spring



450 Series
Heavy Duty

These springs are the most economical and simplified method for closing doors. The coil springs are made of high grade steel wire, and tension is adjustable.

- No special tool is required to apply tension
- Springs and screws are furnished in black (D4) finish

Number	Length Overall, In (mm)	Spring Length, In (mm)
451	9" (229)	5" (127)
452	11" (279)	7" (177.8)
453	13" (330)	9" (228.6)

Aluminum Continuous Geared Hinges

McKinney provides aluminum continuous geared hinges for application on wood, aluminum, and hollow metal doors and frames. Mortising is not necessary as all leaves fit on the edge or the face of the door.

The continuous geared hinge has no pin; instead it uses two geared sections with a continuous cap concealing the gears and the wear surfaces. This design minimizes lateral wear and virtually eliminates door sag. The gear design keeps each leaf in perfect alignment for the full length of the hinge, causing the door to swing evenly from top to bottom.



SER Option
Shown



LISTED
Door Hinges
76Y2

- McKinney continuous hinges come in either clear satin or bronze anodized finishes and are available in lengths from 79" (2007mm) to 120" (3048mm) for standard or heavy weight applications
- Full mortise, full surface, and half surface types available
- McKinney aluminum continuous geared hinges are certified as fully functional after 1.5 million cycles using a standard duty hinge on a 150 lb. door
- McKinney aluminum continuous hinges have been tested and certified by Underwriters Laboratories, Inc.® (U.S.A. and Canada) for up to a 3 hour (A Label)
- Fire Listing for all 4'0" x 10'0" (1219mm x 3048mm) and 8'0" x 10'0" (2438mm x 3048mm) door and frame assemblies. McKinney continuous hinges are guaranteed for the life of the opening. Electrical options are guaranteed for five years. Fire listing certification applies to

all approved hollow metal and wood door assemblies in dry wall or masonry wall construction

- Fire Pins, which also increase the security of the door, are required for 3 hour applications

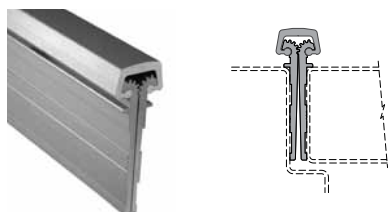
McKinney Continuous Geared Hinges can be electrically modified in three ways:

- SER- Serviceable/Removable hinges are provided in three sections allowing the current carrying cable to be serviced or replaced without removing the door from the frame
- ACC- Accessible feature is provided in a single section with leaves modified to pivot at the location of the current carrying cable to allow access to the cables and connected wiring
- QC- Quick Connect hinges are provided in a single section with the wires already run through the hinge

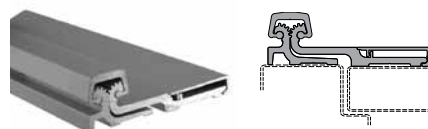
Hinge Weight Capacity

Size, In (mm)	Heavy Duty Lbs.
79" (2007mm)	520 lbs
83" (2108mm)	540 lbs
85" (2159mm)	540 lbs
95" (2413mm)	620 lbs
120" (3048mm)	780 lbs

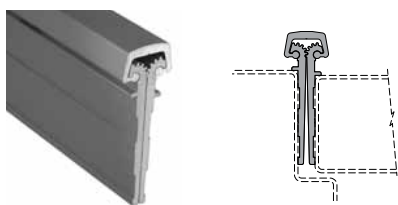
Full Mortise Edge Hung Flush Door MCK-12HD Series



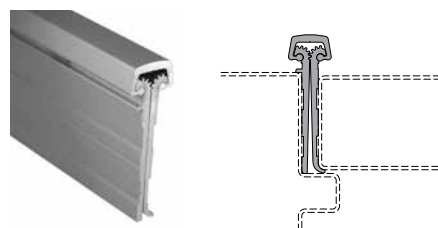
Full Surface Swing Clear MCK-22HD Series



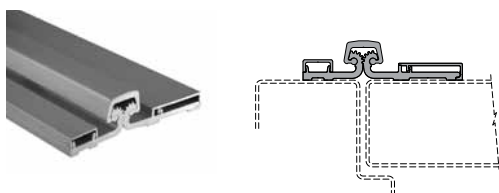
Full Mortise Edge Hung Inset Door MCK-14HD Series



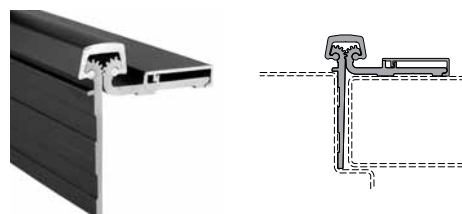
Full Mortise Edge Hung MCK-25HD Series



Full Surface Center Pivot MCK-58HD Series



Half Surface MCK 54 Series



ASSA ABLOY

The global leader in
door opening solutions

800-346-7707 | www.mckinneyhinge.com
Check the web site for the up-to-date catalog

McKinney is a brand associated with Corbin Russwin, Inc., an ASSA ABLOY Group company. Copyright © 2006-2017, Corbin Russwin, Inc. All rights reserved. Reproduction in whole or in part without the express written permission of Corbin Russwin, Inc. is prohibited.

Steel and Stainless Steel Continuous Hinges

McKinney steel and stainless continuous hinges are the clear choice for institutional, industrial or any other high frequency applications where maximum door support is required. Consistent high quality manufacturing and performance levels make door aligning easy for maintenance free, long lasting results.

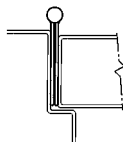
- Non-handed hinges with slim barrel design, concealed Teflon-coated stainless steel, free-moving rod
- Split bearing assembly improves cycle life and promotes quiet and smooth operation
- McKinney type 304 stainless continuous hinges are provided in satin stainless (US32D) finish and are available in bright stainless (US32) on a custom ordered basis
- Steel hinges are gray powder coat finish
- McKinney steel and stainless steel continuous hinges are UL listed (USA and Canada) for up to and including 3 hours
- These hinges support up to a 600 lb. door (FM3500 will support a 900 lb. door)
- Guaranteed to be free from defects in materials and workmanship for a period of ten years
- Maximum labeled opening: 8'0" x 8'0" pairs of doors
- Consult the factory or the McKinney catalog for additional information
- Full complement of electrical options are available
- Many models are windstorm rated

Door Size	Hinge Length Inches	Hinge Length Millimeter
6'8"	79.25"	2013
7'0"	83.125"	2111.4
7'2"	85"	2159.0
8'0"	95"	2413.0
10'0"	118.75"	3016.2

MCK-FM300 Stainless Edge Mounted Application MCK-FM3700 Series Steel

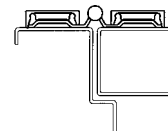
Also available:

Full Wrap Edge Guard, specify MCK-HG305
Half Wrap Edge Guard, specify MCK-HG315



Stainless Steel MCK-FS302 or MCK-FS3702 Steel Surface Applied

Allows for secure attachment for doors and frames that cannot be hung on edge mount hinges

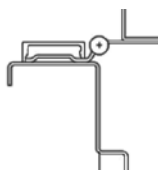


MCK-HM304 or MCK-FS3702 Steel Half Mortise Stainless Application

Door leaf mounted to edge of door and frame leaf is surface mounted to face of frame.

Also available:

Half Wrap Edge Guard, specify MCK-HG306



Edge Guards

- Full-Wrap Edge Guard protects both the inner and outer door edges from dents, gouges and other damage with minimal visibility
- Full-Wrap Edge Guards are supplied with Adjust-A-Screws
- Half-Wrap Edge Guard protects the inside door edge from carts and equipment moving through the opening



Stainless Steel
EDGE GUARDS
EG308, EG-C308, EG-T308

800-346-7707 | www.mckinneyhinge.com
Check the web site for the up-to-date catalog

McKinney is a brand associated with Corbin Russwin, Inc., an ASSA ABLOY Group company. Copyright © 2006-2017, Corbin Russwin, Inc. All rights reserved. Reproduction in whole or in part without the express written permission of Corbin Russwin, Inc. is prohibited.

ASSA ABLOY

The global leader in
door opening solutions

Full Mortise Electric Hinges

ElectroLynx® Hinge (QC option)



QC-12



Features concealed plug connectors that eliminate the need for separate or exposed wiring. Standard connectors make installation quick and simple. Brass eyelets add protection and durability.

- The QC option is available on standard and heavy weight full mortise bearing hinges as well as swing clear and wide throw hinges
- Electric hinges allow a constant flow of energy from the power source through the hinge to electrified door hardware. No external wires can be seen, eliminating tampering and improving the aesthetics of the door opening
- Materials: brass, stainless steel, and steel
- For 4 amp continuous @ 24 volts AC or DC per circuit, 28 gauge multi-strand wires are used. A pigtail is provided for connection to the source wiring
- An 8 position connector is used for QC2, QC4, QC6 and QC8 wire hinges. An 8 position and a 4 position connector is used for QC12 wire hinges. A QC2A wire hinge is available for power on, power off applications
- Hand of hinge must be specified on two knuckle hinges
- Full Mortise QC hinges are available in most BHMA and McKinney powder coat finishes
- Wires are coordinated to work with other ASSA ABLOY Group brands electro-mechanical hardware
- Electric hinges should be installed in the center position on the door. Installation instructions are packed with each hinge
- Hinges are factory tested and specially packaged to minimize against damage during shipment

Standard ElectroLynx Retrofit Cable Sizes

Actual Cable Length	12 Conductor and Molex both ends	12 Conductor and Molex one end, pinned one end	Typical Application
3"	QC-C003	QC-C003P	Between hinge and the end of an exit device.
6"	QC-C006	QC-C006P	
12"	QC-C012	QC-C012P	
26"	QC-C200	QC-C200P	
32"	QC-C206	QC-C206P	Between hinge and through the door to the lockset or exit device trim.
38"	QC-C300	QC-C300P	
44"	QC-C306	QC-C306P	
50"	QC-C400	QC-C400P	
15' 2"	QC-C1500	QC-C1500P	From the hinge location, up the jamb to above the ceiling, or up and around full lite or half lite metal door.

ElectroLynx® Power over Ethernet Hinges



Patent No. 7,824,200



The patented McKinneyElectroLynx® Power over Ethernet (PoE) Quick Connect hinge provides for the passing of Ethernet data through the door opening. Installation is a snap with the friendly "plug and play" connectors which allow power to be linked from the incoming source through the door to the electrified hardware. PoE data is bidirectional.

- Brass eyelets add protection and durability to the PoE hinge which features common wire colors coordinated to work with intelligent Power over Ethernet electromechanical hardware from SARGENT and Corbin Russwin
- The PoE hinge should be installed in the second from bottom hinge position on the door. Once installed, it will give no outward indication of its function and will transfer power and data efficiently and reliably, as long as the wire capacity is not exceeded
- All PoE hinges are factory tested and specially packaged to minimize damage during shipment. Installation instructions are packed with each hinge.
- Along with the PoE hinge, mating PoE door and frame side harnesses are required to complete the opening. The required PoE harnesses must be ordered separately
- See full line catalog for PoE harness part numbers.
- Specify suffix PoE

* Refer to individual full line catalog pages regarding the availability of these options.

ASSA ABLOY

The global leader in
door opening solutions

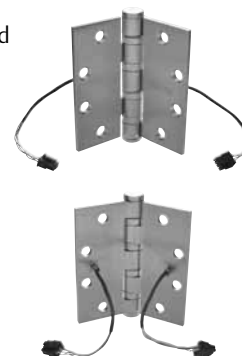
800-346-7707 | www.mckinneyhinge.com
Check the web site for the up-to-date catalog

McKinney is a brand associated with Corbin Russwin, Inc., an ASSA ABLOY Group company. Copyright © 2006-2017, Corbin Russwin, Inc. All rights reserved. Reproduction in whole or in part without the express written permission of Corbin Russwin, Inc. is prohibited.

MacPro® Electric Hinges

MacPro® Electric Hinges connect the power source to electrified door hardware such as locking hardware and exit devices. They are ideal for new construction as well as retrofit and aftermarket applications. The MacPro Electric Hinges feature center exit wires allowing them to replace existing electric hinges with center exit wires.

- MacPro Electric Hinges are easy to install with ElectroLynx®
- Quick Connect (QC) or Concealed Circuit (CC) connection options
- Once installed, the wires are concealed to increase security and prevent tampering
- Available in standard and heavy weight
- Brass eyelets on the portal holes prevent chafing, giving the hinge an extended service life
- UL Listed
- Concealed Circuit (CC) is available as CC4 or CC8
- ElectroLynx® Quick Connect (QC) is available with QC4, QC8 or QC12

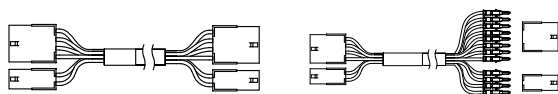


No.	Size	Hinge Type	Base Material	Weight	Gauge	Finish	Connector Options
MPB79	4 $\frac{1}{2}$ " x 4"	Bearing	Steel	.134	STD	26D	CC4, CC8
MPB79	4 $\frac{1}{2}$ " x 4"	Bearing	Steel	.134	STD	26D	QC4, QC8, QC12
MPB79	4 $\frac{1}{2}$ " x 4 $\frac{1}{2}$ "	Bearing	Steel	.134	STD	26D	CC4, CC8
MPB79	4 $\frac{1}{2}$ " x 4 $\frac{1}{2}$ "	Bearing	Steel	.134	STD	26D	QC4, QC8, QC12
MPB68	4 $\frac{1}{2}$ " x 4 $\frac{1}{2}$ "	Bearing	Steel	.180	HVY	26D	CC4, CC8
MPB68	4 $\frac{1}{2}$ " x 4 $\frac{1}{2}$ "	Bearing	Steel	.180	HVY	26D	QC4, QC8, QC12

ElectroLynx® Retrofit Cables

If you are not ordering ASSA ABLOY Door Group doors with the ElectroLynx® cable pre-installed in the door, you must order an ElectroLynx® retrofit cable to go between ANY hardware and the hinge. This includes 3" cables to go from the hinge to an exit device and up to a 15' cable to go up and around a full lite metal door.

Standard ElectroLynx® Retrofit Cable Sizes



Actual Cable Length	12 Conductor and Molex both ends	12 Conductor and Molex one end, pinned one end	Typical Application
3"	QC-C003	QC-C003P	Between hinge and the end of an exit device.
6"	QC-C006	QC-C006P	
12"	QC-C012	QC-C012P	
26"	QC-C200	QC-C200P	Between hinge and through the door to the lockset or exit device trim.
32"	QC-C206	QC-C206P	
38"	QC-C300	QC-C300P	
44"	QC-C306	QC-C306P	
50"	QC-C400	QC-C400P	From the hinge location, up the jamb to above the ceiling, or up and around full lite or half lite metal door.
15' 2"	QC-C1500	QC-C1500P	
25'	-	QC-C2500P	
30'	-	QC-C3000P	

Custom lengths available.

800-346-7707 | www.mckinneyhinge.com

Check the web site for the up-to-date catalog

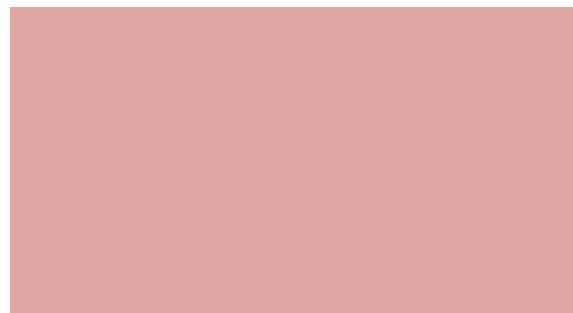
McKinney is a brand associated with Corbin Russwin, Inc., an ASSA ABLOY Group company. Copyright © 2006-2017, Corbin Russwin, Inc. All rights reserved. Reproduction in whole or in part without the express written permission of Corbin Russwin, Inc. is prohibited.

ASSA ABLOY

The global leader in door opening solutions

ASSA ABLOY is the global leader in door opening solutions, dedicated to satisfying end-user needs for security, safety and convenience

ASSA ABLOY



ASSA ABLOY
225 Episcopal Road
Berlin, CT 06037
Phone: (800) 346-7707 • Fax: (800) 541-1073
www.McKinneyhinge.com

McKinney is a brand associated with Corbin Russwin, Inc., an ASSA ABLOY Group company.
Copyright © 2012-2017, Corbin Russwin, Inc. All rights reserved. Reproduction in whole or in part without the express written permission of Corbin Russwin, Inc. is prohibited.

51200 7/17