

HIT-118 Drill Guide

**For Alarm Lock
Trilogy T2, T3
and T3 Prox**

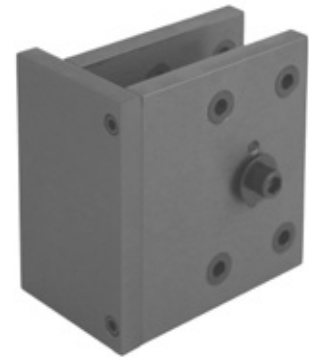
Accurately install Alarm Lock T2, T3 and T3 Prox pushbutton locks using the HIT-118 drill guide. This unit thru-bolts to door using the existing 2-1/8" crossbore for alignment. All required mounting and function holes are located with hardened drill bushings on both sides of template to allow drilling from either side of door. Standard drill guide will accommodate doors up to 2" thick, with a 2-3/4" backset. Locks with a 3-3/4" or 5" backset requires the optional HIT-BAK adapter.



HIT-123 Drill Guide

**For Glynn Johnson,
Ives & IR Brand
Hospital Push/
Pull Latches**

This drill guide is designed to retrofit a standard 2-1/8" Crossbore, to accept the Ingersoll-Rand brands of hospital push-pull latches. The HIT-123 uses the existing crossbore for alignment, and all required through bolt holes are located with hardened drill bushings on both sides of template, to allow drilling from either side of door. Standard drill guide will accommodate doors up to 2" thick with a standard 2-3/4" backset. Locks with a 3-3/4" or 5" backset requires the optional HIT-BAK adapter.



HIT-124 Drill Guide

**For Don-Jo, Trimco
and Builders Brass
Works Hospital
Push / Pull
Latches**

This drill guide is designed to retrofit a standard 2-1/8" Crossbore, to accept the Don-Jo, Trimco, and BBW brands of hospital push-pull latches. The HIT-124 uses the existing crossbore for alignment, and all required through bolt holes are located with hardened drill bushings on both sides of template, to allow drilling from either side of door. Standard drill guide will accommodate doors up to 2" thick with a standard 2-3/4" backset. Locks with a 3-3/4" or 5" backset requires the optional HIT-BAK adapter.



HIT-125 Drill Guide

**For Sargent 114 &
115 Hospital Push/
Pull Latches**

This drill guide is designed to retrofit a standard 2-1/8" Crossbore, to accept the Sargent 114 & 115 hospital push-pull latches. The HIT-125 uses the existing crossbore for alignment, and all required through bolt holes are located with hardened drill bushings on both sides of template, to allow drilling from either side of door. Standard drill guide will accommodate doors up to 2" thick with a standard 2-3/4" backset. Locks with a 3-3/4" or 5" backset requires the optional HIT-BAK adapter.

