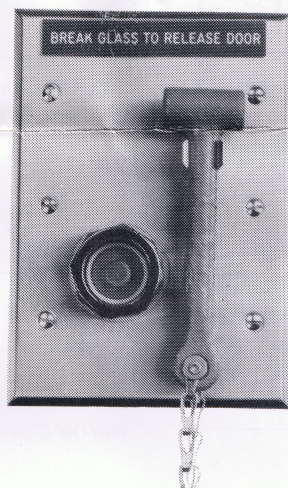
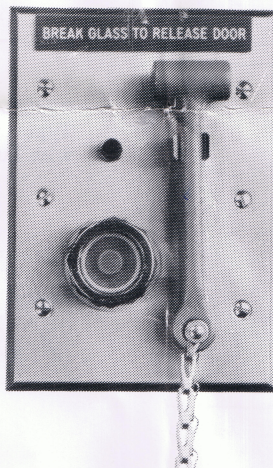


7400 series break glass release and indicator assy.



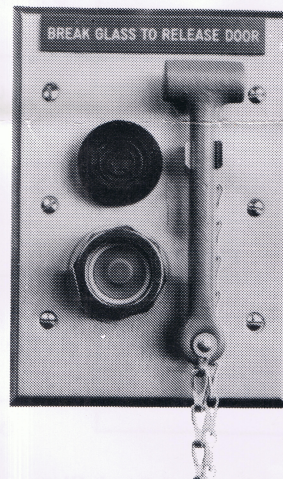
#7400

Standard Break Glass Assembly



#7401

Similar to #7400 with additional L.E.D. Luminus Indicator to signal usage. (Specify Voltage)



#7402

Similar to #7400 with the addition of an audible to signal usage. (Specify Voltage)

operations

#7400 Series Break Glass Assemblies are a preferred method of releasing non-designated egress doors.

The unit consists of a replaceable Break Glass cartridge, that normally holds a plunger activated switch depressed, until the cartridge lens is broken.

When the lens is broken the plunger jumps forward and alters the switch contact position. Four replacement lens disks are provided with each assembly.

A small hammer is attached to the Break Glass Assembly, via a mounting clip along with 12" of chain, to insure it will not stray from the assembly.

On the top edge of the assembly is a red sign clearly indicating the purpose of the release.

where used

Laboratories, testing areas, and other similar rooms provided with exit doors.

Fail Safe multiple door interlocks, where in event of equipment malfunction or incorrect usage, or wiring, may trap someone between doors.

why used

The Break Glass Assembly is a preferred alternate to the conventional pull box installation, as accidental activation is all but eliminated as far as false alarms are concerned. Breaking the lens requires more of a commitment on the users part than merely pulling the handle and leaving the scene.

features

- Surface or mortise mounts, in a standard 3 gang enclosure.
- Compatible with all Fail Safe type Electric Locking Systems.
- An effective alternative to the standard pull box type.
- Standard finish US26, special finishes available, consult factory for price and delivery.

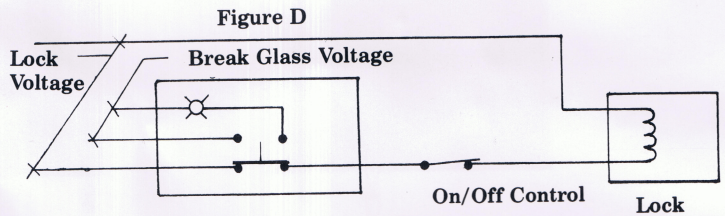
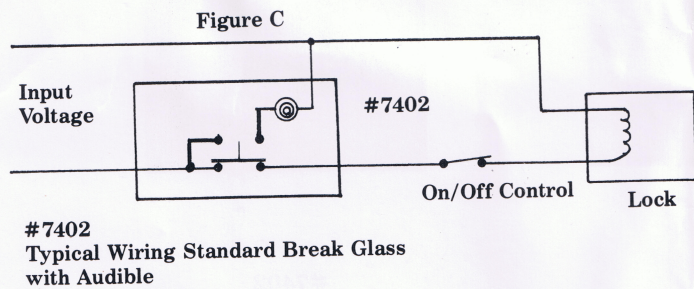
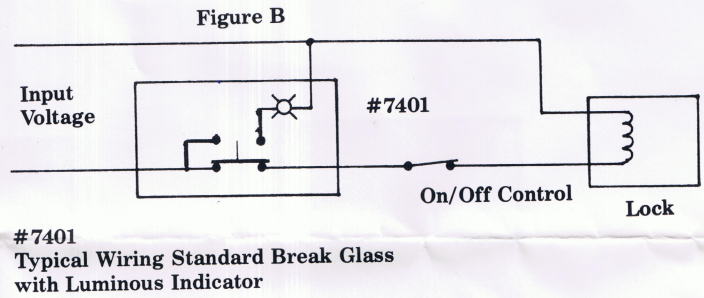
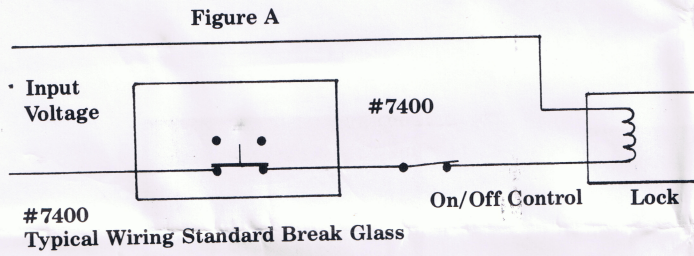
LOCKNETICS

|||■■■ Security Engineering

a HARROW company

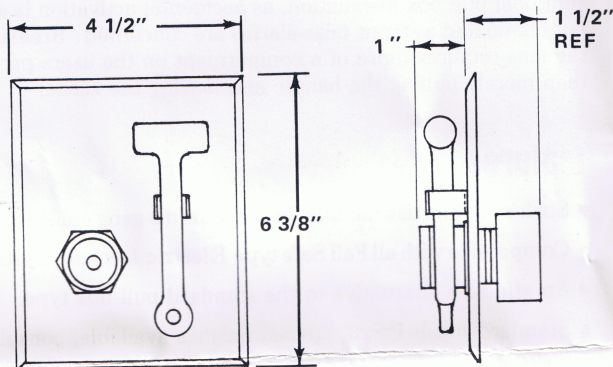
7400 series break glass assy.

wiring



NOTE: Figures B & C are shown with Break Glass being operated with voltage the same as the lock, for installation utilizing a different operating voltages see Figure D.

specifications

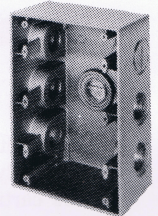


Switch Contacts rated 6 amp. at 120 volt
Screw type wiring connections

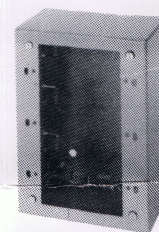
enclosures



#7903 M
Mortise



#7903 WP
Weatherproof



#7903
Standard

FOR ADDITIONAL
INFORMATION CONTACT

LOCKNETICS

Security Engineering

a HARROW company

560 Birch Street • Forestville, CT 06010 • (203) 584-9158 • Fax: (203) 584-2136