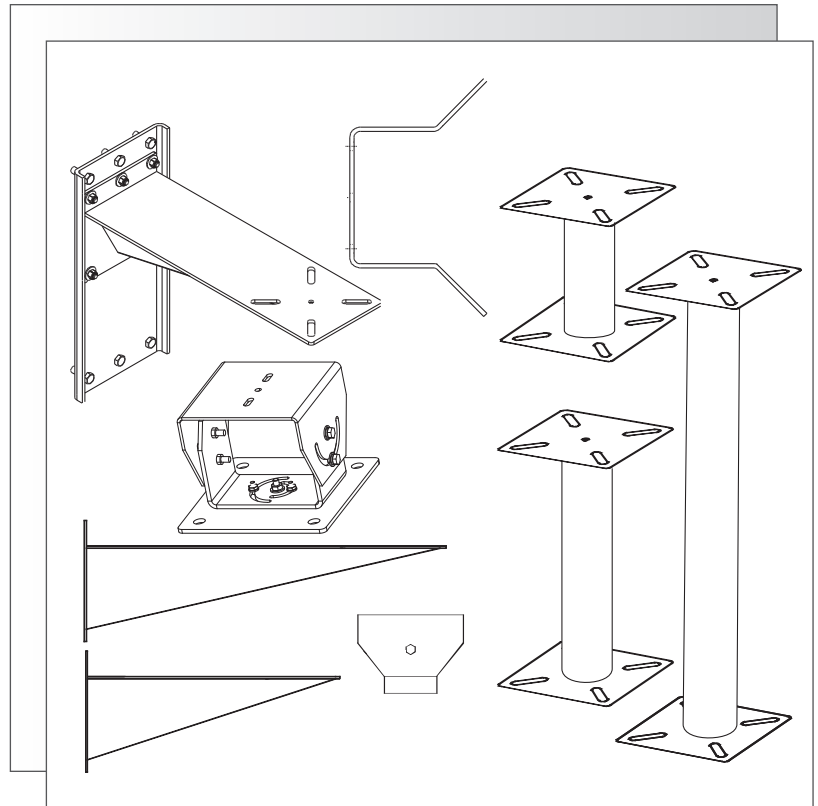


INDOOR/OUTDOOR HEAVY-DUTY MOUNTS



**MT9207, MT9214, MT9216,
MT9222, MT9224, MT9226
MT9227, MT9228, MT9234,
MT9235, MT9237**

SAFETY PRECAUTIONS



The exclamation point within an equilateral triangle is intended to alert the user to presence of important operating and maintenance (servicing) instructions in the literature accompanying the appliance.

SECURITE



Le point d'exclamation à l'intérieur d'un triangle équilatéral avertit l'utilisateur de la présence d'instructions importantes d'utilisation et de maintenance dans la documentation accompagnant l'appareil.

SICHERHEITSVORKEHRUNGEN



Das Ausrufezeichen in dem gleichseitigen Dreieck ist dazu da, den Benutzer auf wichtige Inbetriebnahme- und Instandhaltungsvorschriften hinzuweisen, die dem Gerät in Form einer Broschüre beigelegt sind.

PRECAUCIONES DE SEGURIDAD



El símbolo de exclamación dentro de un triángulo equilátero, se muestra con el objetivo de alertar al usuario de que instrucciones de operación y mantenimiento importantes acompañan al equipo.

1 UNPACKING

Unpack carefully. This is mechanical equipment and should be handled carefully.

Check for the following items:

- Verify the unit model number.
- Installation and Operating Instructions.

If an item appears to have been damaged in shipment, replace it properly in its carton and notify the shipper. If any items are missing, notify Aigis Mechtronics.

The shipping carton is the safest container in which the unit may be transported. Save it for possible future use.

2 SERVICE

If the unit ever needs repair service, the customer should contact Aigis Mechtronics.

3 DESCRIPTION

These versatile indoor/outdoor mounts accommodate fixed cameras, housings, pan/tilts, and scanners.

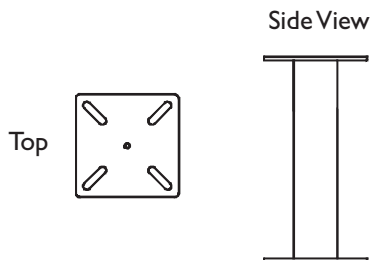
4 INSTALLATION


See **SPECIFICATIONS** for the maximum rated load of mount.


Mounting Hardware: Not furnished.

Note: The use of stainless steel or zinc-plated fasteners is recommended.

4.1 MT9207 178-mm (7-inch), MT9214 356-mm (14-inch) and MT9224 610-mm (24-inch) Column Mounts



1. Determine a secure mounting location, either for a pedestal (floor) mounted installation or for an overhead (ceiling) mounted installation.
2.  **Caution:**
 - a. For a secure mounting installation, bolts should extend through the mounting surface and be secured with nuts, washers, and lock washers on the opposite side.
 - b. If studs are used, they should either be anchored in concrete or welded to a steel backer plate.
 - c. If the MT9207, MT9214 or MT9224 is mounted to wood or a blind structure (with no access to the rear) in a ceiling, make certain that the mounting fasteners have a **minimum** pull-out strength of 600 pounds.

 **WARNING:** The maximum rated load is reduced to 45.3 kg (100 lb) when mounted beneath a ceiling.

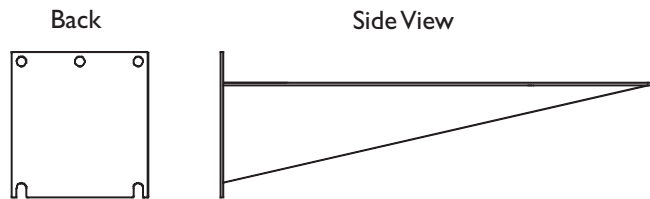
3. Locate and drill four mounting holes using the end flanges as a template.
4. Using four bolts (or studs) with nuts, washers, and lock washers, fasten the MT9207, MT9214 or MT9224 to its mounting location and tighten all nuts securely.

Note: The **minimum** diameter bolt (or stud) required is 10 mm (3/8 in).
5. To mount the MT9227 Adjustable Head Bracket:
 - a. Use the mounting hole which is located in the center of the MT9207, MT9214 or MT9224 mounting plate. This mounting hole is threaded to receive a 1/4-20 bolt.
 - b. Insert a 1/4-20 hex head machine bolt with washer and lock washer through the MT9227 base plate and into the threaded insert on either end flange of the MT9207, MT9214 or MT9224.
6. To mount the MT9237 Heavy Duty Adjustable Head Bracket:
 - a. Line up the holes in the corners of the MT9237 base plate with the slots in the mounting flange.
 - b. Insert a 3/8-16 x 1" hex bolt through the base plate and mounting flange, using a 3/8" flat washer and a 3/8" spiral lock washer under the head of the bolt.
 - c. From the underside of the mounting flange, use a 3/8" flat washer and a 3/8-16 hex nut to secure the MT9237 to the mounting flange.

- d. Repeat steps 'a' through 'c' for all four holes in the base plate. Tighten all bolts securely.
7. To mount a pan/tilt or scanner device:
 - a. The slotted mounting holes on the MT9207, MT9214 or MT9224 can accommodate the following mounting hole dimensions of pan/tilts and scanners:

	Max.	Min.
Bolt Circle	197 mm (7.75 in)	121 mm (4.75 in)
Square Centers	140 mm (5.50 in)	85 mm (3.36 in)
 - b. To install, line up the holes in the base mounting plate of the device. Insert a minimum of four machine bolts (not included) with flat washers through the device and the end flange of the MT9207, MT9214 or MT9224; then securely fasten using lock washers and nuts.

4.2 MT9216 409-mm (16-inch) and MT9222 564-mm (22-inch) Wall Mounts



1. Determine a secure wall mounting location.

⚠ WARNING: Do not mount in an inverted position.
2. **⚠ Caution:**
 - a. For a secure installation use six (6) bolts (not included). The bolts should extend through the mounting surface and be secured with nuts, lock washers, and flat washers on the opposite side.
 - b. If studs are used, they should be anchored in concrete or welded to a steel backer plate.
 - c. If the wall mount is attached to wood or to a blind structure (with no access to the rear), make certain that the mounting fasteners have a **minimum** pull-out strength of 600 pounds.
3. For ease of installation, locate the bottom mounting holes first. Install the bolts (or studs) into the wall surface.

⚠ WARNING: The MT9216 and MT9222 must be mounted with the slotted mounting holes of the wall plate at the bottom.
4. Reseat the MT9216 or MT9222 on the bolts (or studs) using the bottom slotted holes, then locate the upper mounting holes and drill into the wall surface.
5. Install the upper bolts (or studs) through the wall mount and into the wall surface. Tighten upper and lower bolts (or studs) securely.

Note: The **minimum** diameter bolt (or stud) required is 10 mm (3/8 in).

6. To mount the MT9227 Adjustable Head Bracket to:

MT9216 Wall Mount

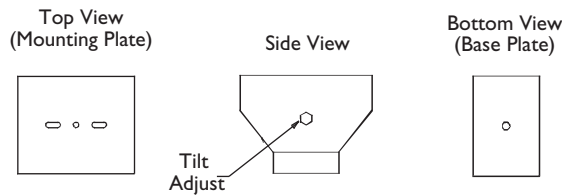
 - a. Use the 1/4-20 threaded mounting hole located in the center of the slot pattern.
 - b. Insert a 1/4-20 hex head machine bolt, washer, and lock washer through the adjustable head and into the threaded insert in the wall mount. The bolt should be 20 mm (3/4 in) long. A lock washer and a flat washer must be used under the head of the bolt.

MT9222 Wall Mount

 - a. Line up the hole in the MT9227 base plate with the center mounting hole on the mounting bracket.
 - b. Insert a bolt with flat washer through the MT9227 base plate and mounting bracket. A 5/16-18 x 50 mm (2-in) long bolt (not supplied) is recommended to fasten the MT9227 to the mounting bracket.
 - c. From the underside of the mounting bracket, use a lock washer and nut to secure the MT9227. Temporarily leave hand tight.
7. To mount the MT9237 Heavy Duty Adjustable Head Bracket to the MT9216 or the MT9222 Wall Mounts:
 - a. Line up the holes in the corners of the MT9237 base plate with the slots in the flange bracket.
 - b. Insert a 3/8-16 x 1" hex bolt through the base plate and flange bracket, using a flat washer and a 3/8" flat washer and 3/8" spiral lock washer under the head of the bolt.
 - c. From the underside of the flange bracket, use a 3/8" flat washer and 3/8-16 hex nut to secure the MT9237 to the mounting flange.
 - d. Repeat steps 'a' through 'c' for all four holes in the base plate. Tighten all bolts securely.
8. To mount a pan/tilt or scanner device:
 - a. The slotted mounting holes on the MT9216 and MT9222 can accommodate the following mounting hole dimensions of pan/tilts and scanners:

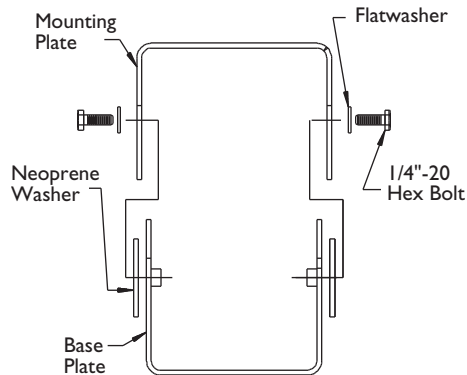
	Max.	Min.
Bolt Circle	197 mm (7.75 in)	121 mm (4.75 in)
Square Centers	140 mm (5.50 in)	85 mm (3.36 in)
 - b. To install, line up the holes in the base mounting plate of the device. Insert a minimum of four machine bolts (not included) with flat washers and lock washers through the device and the mounting plate of the wall mount; then securely fasten using lock washers and nuts.

4.3 MT9227 Adjustable Head Bracket



4.3.1 Parts List

Mounting Plate 2 - Flat Washers
 Base Plate 2 - Neoprene Washers
 2 - 1/4-20 Hex Bolts



4.3.2 Assembly

1. Insert a neoprene washer between each side of the mounting plate and base plate.
2. Line up each of the side holes; insert one 1/4-20 hex head machine bolt with flat washer and screw into each threaded hole in base plate.
3. Hand tighten side bolts until ready to install.

4.3.3 Installation

1. The MT9227 is intended for installation on a rigid mounting surface by use of a bolt through the base plate.
2. To mount the MT9227 Adjustable Head Bracket to:

MT9216 Wall Mount

- a. Use the 1/4-20 threaded mounting hole located in the center of the slot pattern.
- b. Insert a 1/4-20 hex head machine bolt through the adjustable head and into the threaded insert in the wall mount. The bolt should be 20 mm (3/4 in) long. A lock washer and a flat washer must be used under the head of the bolt.

MT9222 Wall Mount

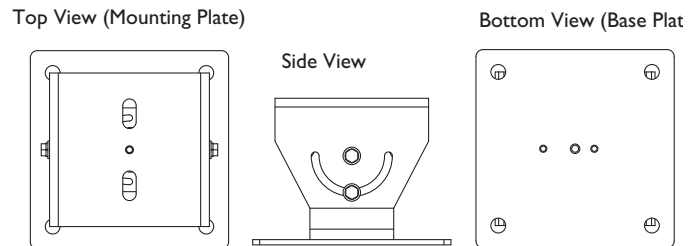
- a. Line up the hole in the MT9227 base plate with the center mounting hole on the mounting bracket.
- b. Insert a bolt with flat washer through the MT9227 base plate and mounting bracket. A 5/16-18 x 50 mm (2 in) long bolt (not supplied) is recommended to fasten the MT9227 to the mounting bracket.
- c. From the underside of the mounting bracket, use a lock washer and nut to secure the MT9227. Leave hand tight.

MT9214 ColumnMount

Insert a 1/4-20 hex head machine bolt through the MT9227 base plate and into the threaded insert on either end flange of the MT9214.

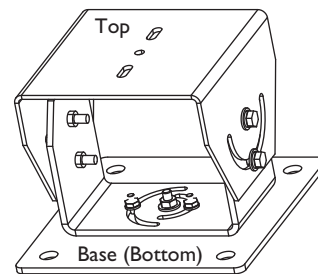
3. To install a camera or camera/housing assembly:
 - a. Insert two (2) 1/4-20 bolts with flat washers from the underside of the MT9227 mounting plate.
 - b. Thread into the underside of the camera or housing and tighten securely.
4. To adjust the MT9227:
 - a. Observe the camera video on a monitor while moving the camera to the desired position.
 - b. Tighten securely both the base plate mounting bolt and the two side bolts.

4.4 MT9237 Heavy Duty Adjustable Head Bracket



4.4.1 Parts List

8 - 3/8" Flat Washers 4 - 3/8" Split Lock Washers
 4 - 3/8 x 16 x 1" Hex Bolt
 4 - 3/8 x 16 Hex Nut



4.4.2 Installation

1. The MT9237 is intended for installation on a rigid mounting surface by use of 4 x 3/8-16 x 1" Hex Bolts through the corners of the base plate.
2. To mount the MT9237 Heavy Duty Adjustable Head Bracket to: MT9207, MT9214 and MT9224 Column Mounts or the MT9216 and MT9222 Wall Mounts:
 - a. Line up the holes in the corners of the MT9237 base plate with the slots in the mounting flange.
 - b. Insert a 3/8-16 x 1" hex bolt through the base plate and mounting flange, using a 3/8" flat washer and a 3/8" spiral lock washer under the head of the bolt.
 - c. From the underside of the mounting flange, use a 3/8" flat washer and a 3/8-16 hex nut to secure the MT9237 to the mounting flange.
 - d. Repeat steps 'a' through 'c' for all four holes in the base plate. Tighten all bolts securely.

Note: Do not mount the MT9216 or the MT9222 in an inverted position.

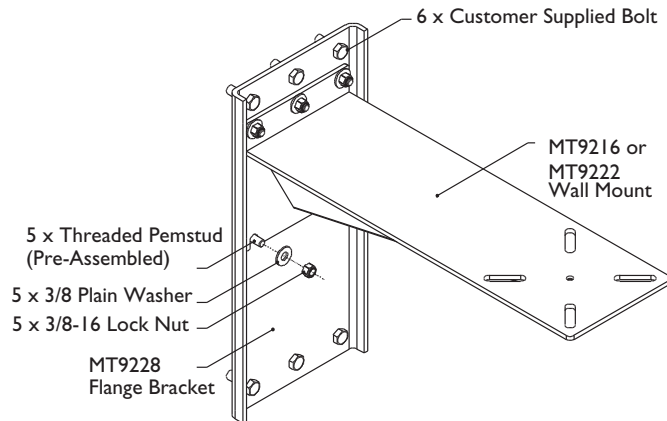
4.5 MT9228 Flange Bracket

4.5.1 Parts List

Mounting Plate


5 - 3/8 Flat Washers

5 - 3/8-16 Lock Nuts

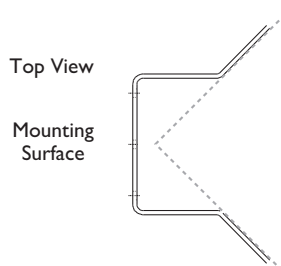



Note: The MT9228 flange bracket is used to increase the weight distribution on insufficient load bearing surfaces for the MT9216 and MT9222 wall mounts.

4.5.2 Installation

1. Determine a secure wall mounting location.
2. Mount the MT9228 flange bracket with the pre-assembled threaded pemstuds facing outward from the mounting surface.
3.  **Caution:**
 - a. For a secure installation, use six (6) bolts (not included). The bolts should extend through the mounting surface and be secured with nuts, lock washers, and flat washers on the opposite side.
 - b. If studs are used, they should be anchored in concrete or welded to a steel backer plate.
 - c. If the flange bracket is attached to wood or to a blind structure (with no access to the rear), make certain that the mounting fasteners have a minimum pull-out strength of 600 pounds.
4. Mount either the MT9216 or the MT9222 wall mounts to the MT9228 flange bracket. Align the mounting holes of the wall mount with the five (5) threaded pemstuds of the flange bracket.
5. Follow instructions, **MT9216 409-mm (16-inch) and MT9222 564-mm (22-inch) Wall Mounts**, for wall mount installation to the MT9228 flange bracket.

4.6 MT9226 Corner Bracket



1. Determine a secure wall mounting location.
2.  **Caution:**
 - a. Use 10 mm (3/8 inch) stainless steel or zinc plated fasteners (not included) for secure installation.
 - b. If bolts are used, they should extend through the mounting surface and be secured with flat washers, lock washers, and nuts on the opposite side. Each bolt must have a **minimum** pull-out strength of 780 N (175 lb).
 - c. If studs are used, they should be anchored in concrete or welded to a steel backer plate. Each stud must have a **minimum** pull-out strength of 780 N (175 lb).
 - d. If the wall mount is attached to wood or a blind structure (with no access to the rear), make certain that the mounting fasteners have a **minimum** pull-out strength of 780 N (175 lb).
3. Locate the eight holes or stud locations using the bracket as a template (four holes per bracket leg).
4. Install the mount using at least eight bolts or studs.
5. Mount wall or dome mount as instructed in the accompanying instructions.

4.7 MT9234 16-inch Wall Mount with Adjustable Head Bracket

The MT9234 unit is a combination of the MT9216 Wall Mount and the MT9227 Adjustable Head Bracket. Refer to **Section 4.3.3, item 2** for assembly instructions.

4.8 MT9235 22-inch Wall Mount with Heavy Duty Adjustable Head Bracket

The MT9235 unit is a combination of the MT9222 Wall Mount and the MT9237 Heavy Duty Adjustable Head Bracket. Refer to **Section 4.2, item 7** for assembly instructions.

5 SPECIFICATIONS

5.1 Column Mounts

MT9207 178-mm (7-inch)

MT9214 356-mm (14-inch)

MT9224 610-mm (24-inch)

Maximum Rated Load:

Upright: 90.6 kg (200 lb).

Inverted: 45.3 kg (100 lb).

Mounting Hardware: Not furnished.

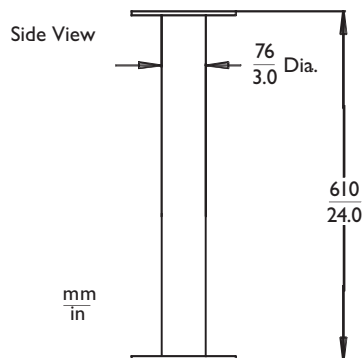
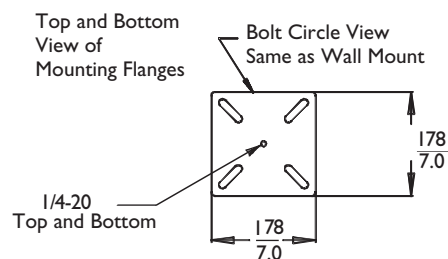
Finish: Light Gray Powder Coat

Weight:

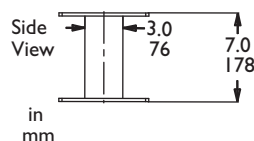
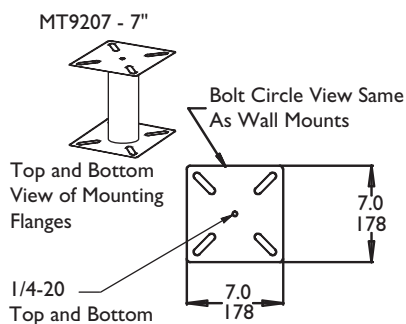
MT9207 : 1.6Kg (3.5 lb)

MT9214: 2.3 kg (5.1 lb).

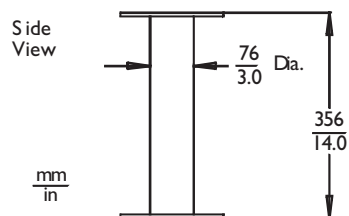
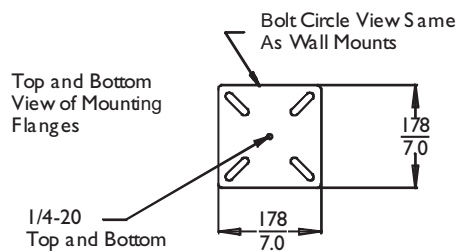
MT9224: 3.3 kg (7.2 lb).



MT9224



MT9207



MT9214

5.2 MT9216 409-mm (16-inch) and MT9222 564-mm (22-inch) Wall Mounts

Maximum Rated Load:

MT9216: 45.3 kg (100 lb).

MT9222: 90.6 kg (200 lb).

Mounting Hardware: Not furnished.

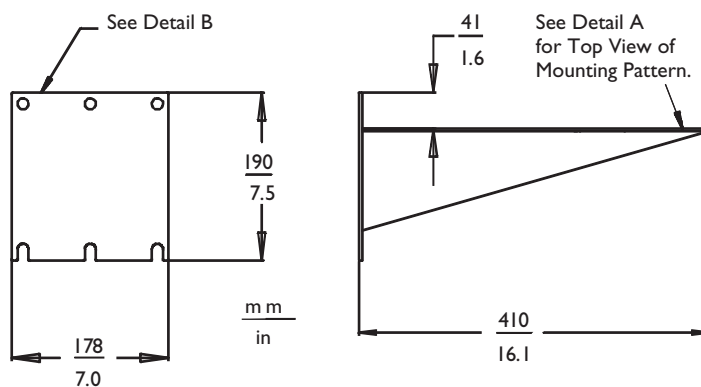
Finish: Light Gray Powder Coat

Weight:

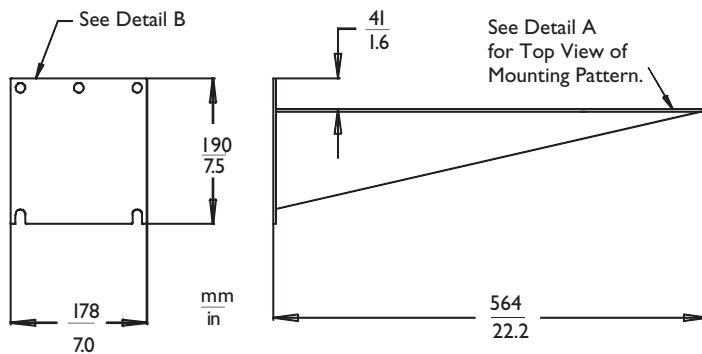
MT9216: 1.6 kg (3.5 lb).

MT9222: 2.9 kg (6.5 lb).

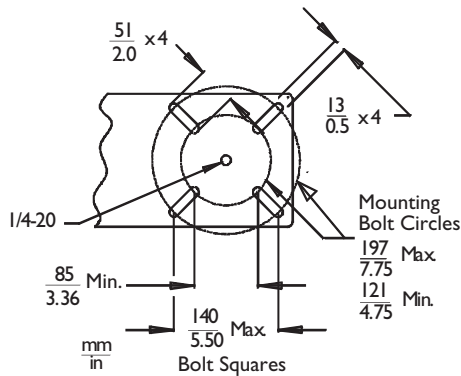
Note: Do not mount the MT9216 or MT9222 wall mounts in an inverted position.



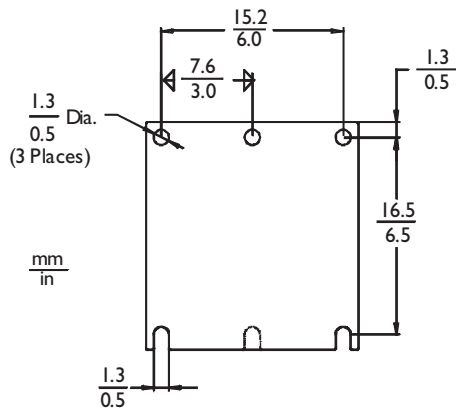
MT9216



MT9222



Detail A - MT9216 and MT9222



Detail B - MT9216

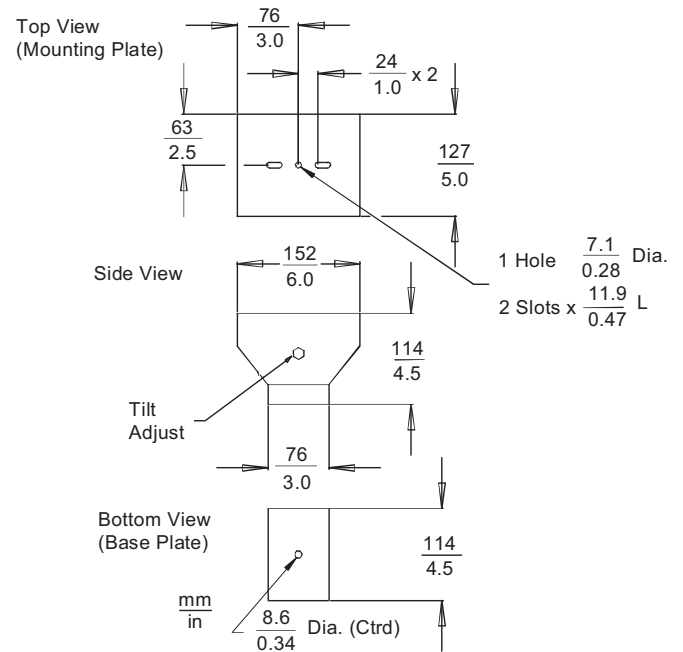
5.3 MT9227 Adjustable Head Bracket

Maximum Rated Load: 45.3 kg (100 lb).

Mounting Hardware: Not furnished.

Finish: Light Gray Powder Coat

Weight: 0.55 kg (1.2 lb).



MT9227

5.4 MT9237 Heavy Duty Adjustable Head Bracket

Maximum Rated Load: 90.72kg (200 lb)

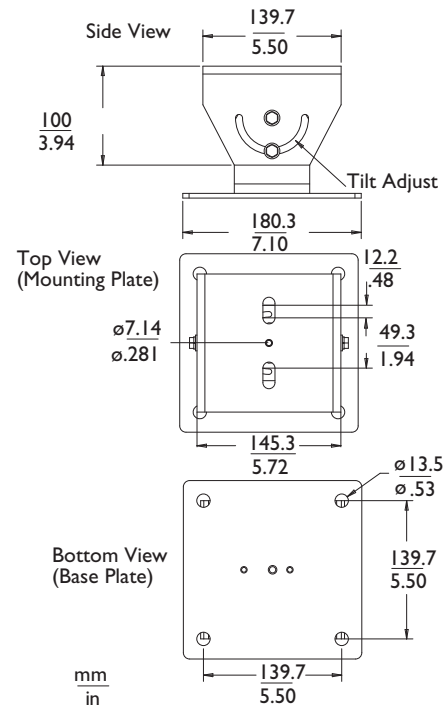
Mounting Hardware: Included (see hardware kit contents)

Finish: Light Gray Powder Coat

Weight: 1.09 kg (2.4 lb)

Horizontal Rotation (Pan): 180°

Vertical Rotation (Tilt): 180°



MT9237

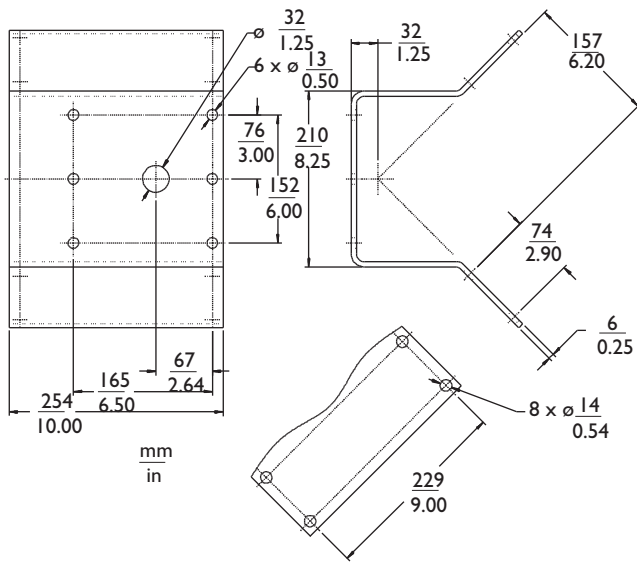
5.5 MT9226 Corner Bracket

Maximum Rated Load: 45.3 kg (200 lb).

Mounting Hardware: Not furnished.

Finish: Light Gray Powder Coat

Weight: 2.9 kg (6.5 lb).



MT9226

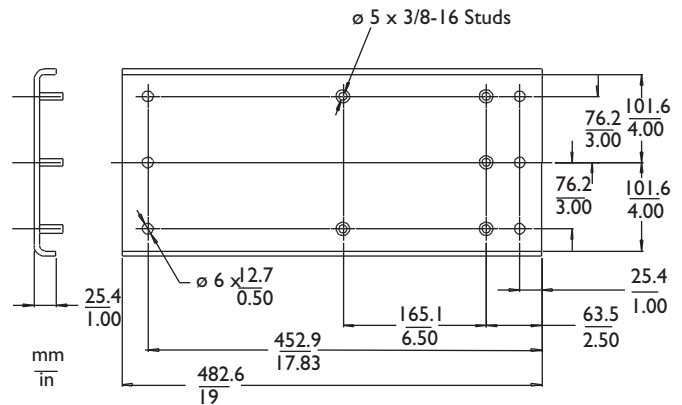
5.6 MT9228 Flange Bracket

Maximum Rated Load: 45.3 kg (200 lb).

Mounting Hardware: (5) 3/8-16 x 1 1/4 studs, (5) 3/8 flat washers, and (5) 3/8-16 lock nuts.

Finish: Light Gray Powder Coat

Weight: 2.1 kg (4.6 lb).



MT9228



mechtronics

©2010 Aigis Mechtronics

1124 Louise Road, Winston-Salem, NC 27107-5450

Tel: 336.785.7740 Fax: 336.785.7744

100 0045 003 AIG 04/10

Printed in U.S.A.

Data subject to change without notice