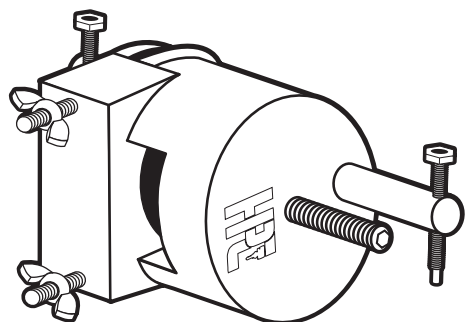


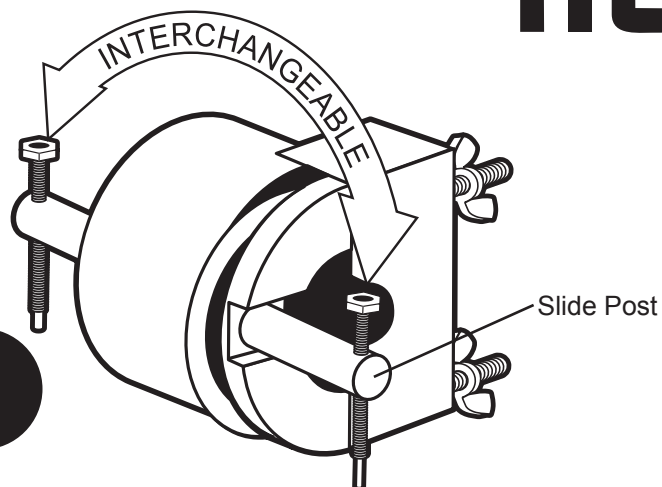
Lever Handle Remover

No. LHR-100

Instructions

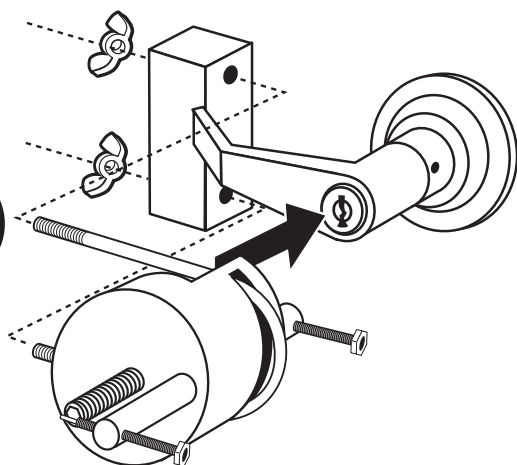


1

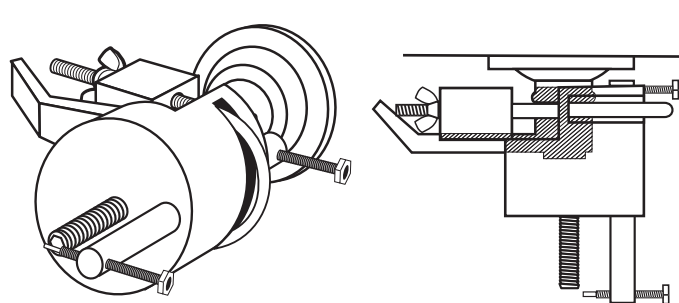


Determine the proper size Pin Depressing Screw and place on operational end of slide post.

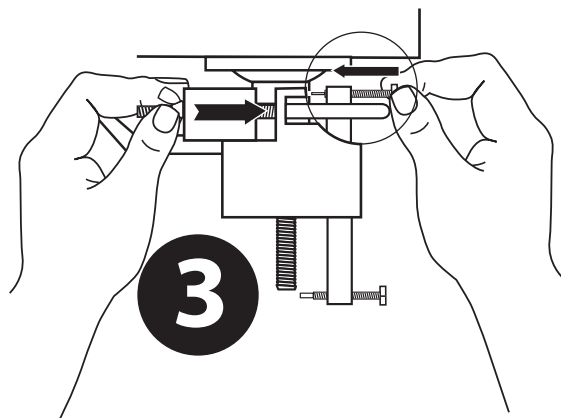
2



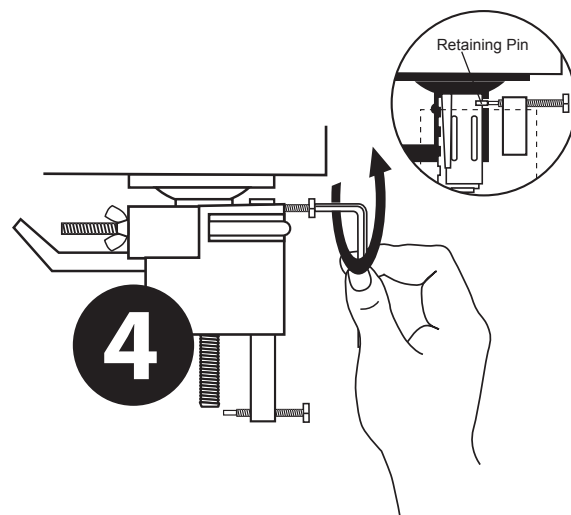
Remove Vice-Block and Wing Nuts.
Mount assembly to Lever as shown.
Re-attach Wing Nuts and align to lever.
Do not tighten Wing Nuts.



Lever Handle Remover aligned on lever.

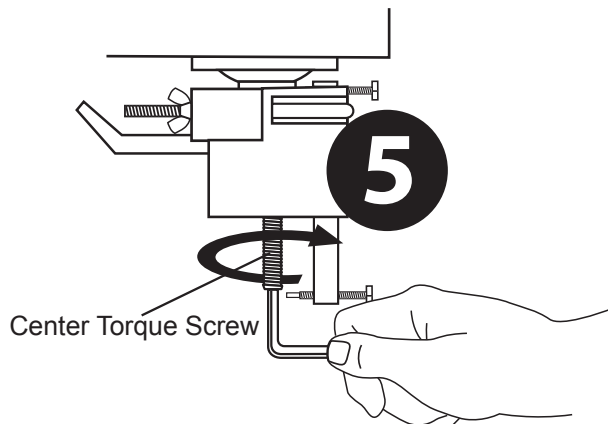


Line up Pin Depressing Screw
and tighten Wing Nuts.



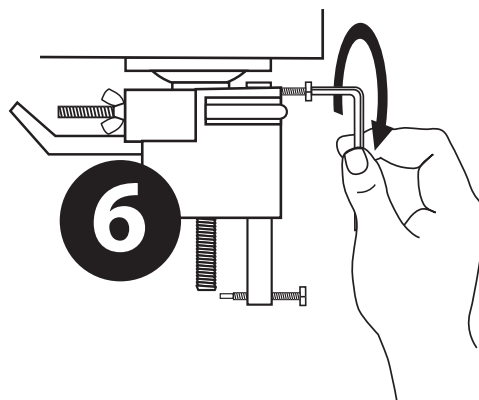
Rotate Pin Depressing Screw slowly
just enough to enter inside of lever wall
and hold retaining pin in.

continued

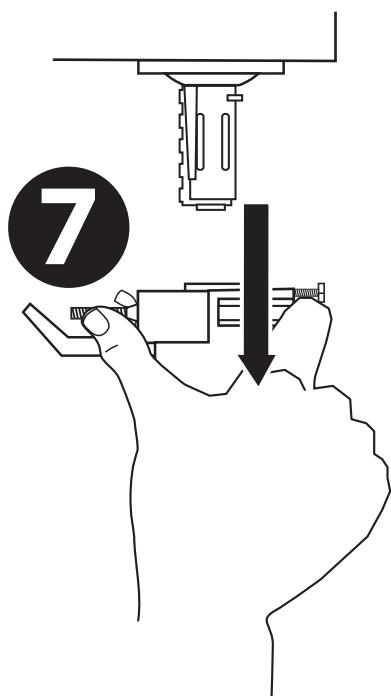


Center Torque Screw

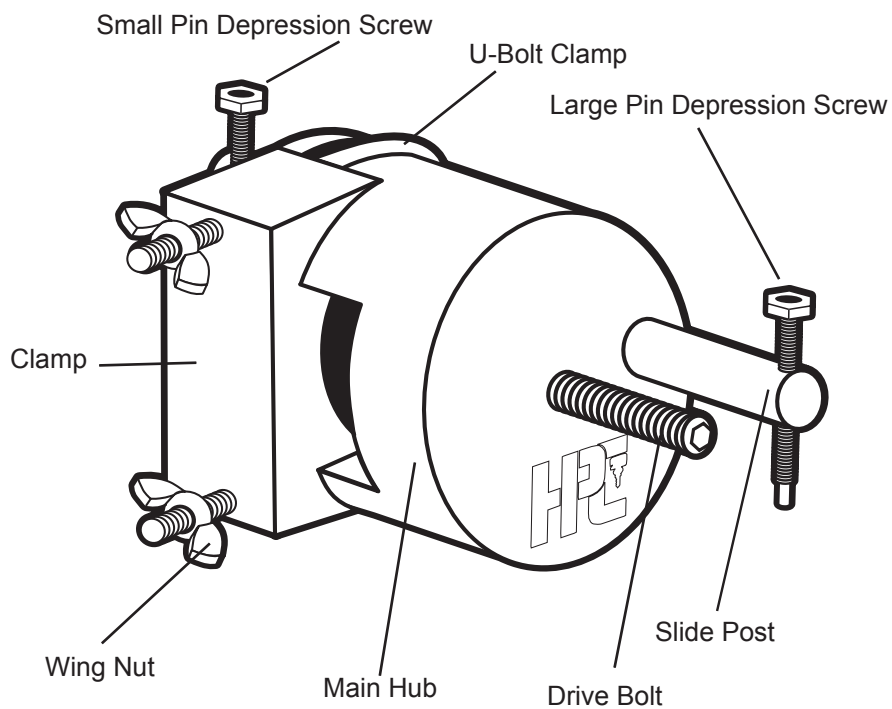
Slowly Rotate Center Torque Screw clockwise until you feel the assembly loosen.



Loosen Pin Depressing Screw away from wall of Lever.



Pull entire assembly toward you.



DESCRIPTION	STOCK No.
Main Hub	LHR-HUB
Drive Bolt	LHR-BOLT
Wing Nut (2)	LHR-WNUT
Slide Post	LHR-POST
Large Depression Screw	LHR-LSCREW
Small Depression Screw	LHR-SSCREW
Clamp	LHR-CLAMP
U-Bolt Clamp	LHR-UBOLT