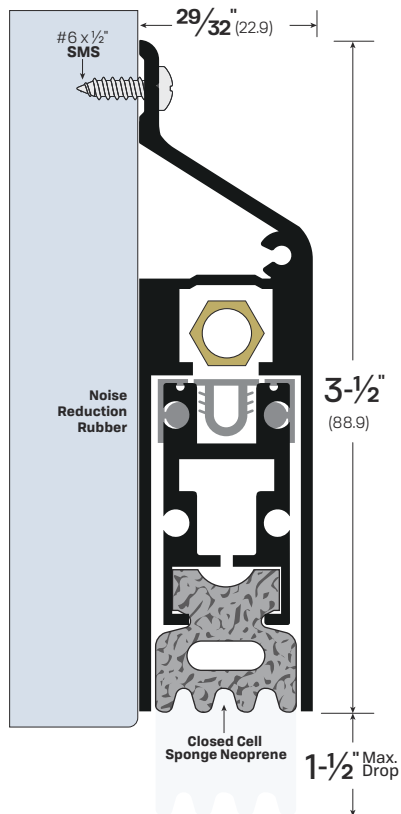


Extended Drop (Patent Pending)

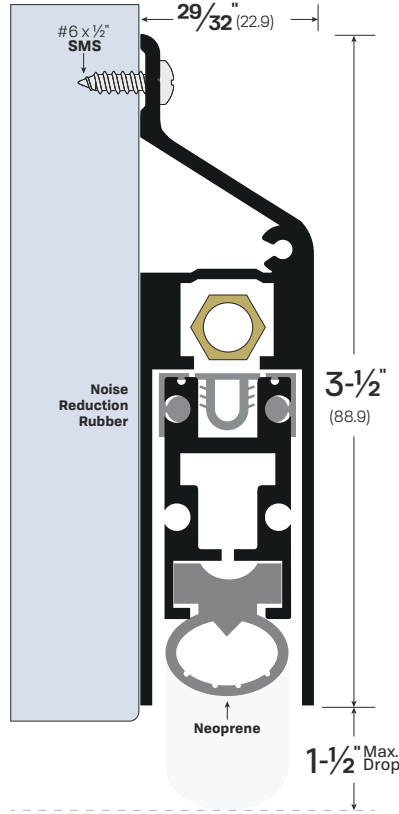
Developed in response to specific user requirements, our new extended drop automatic door bottom solves two common problems. Its integrated design features a unique sloped top casing designed to slough off rain water and prevent pooling on top of the ADB housing in exterior applications. It simplifies installation by eliminating the need for adding a separate rain drip part to the door bottom.

Providing up to a 1.5 inch drop, deeper than typical ADBs, this unit is also designed to help compensate for drop differentials found in door installations with large gradients or slope conditions on one side of the door. The deep drop can also be useful for exterior installations where floor surfaces may be degraded by weather exposure. The deeper drop allows smooth door function in spite these conditions, which can otherwise cause door bottoms to drag and stick.

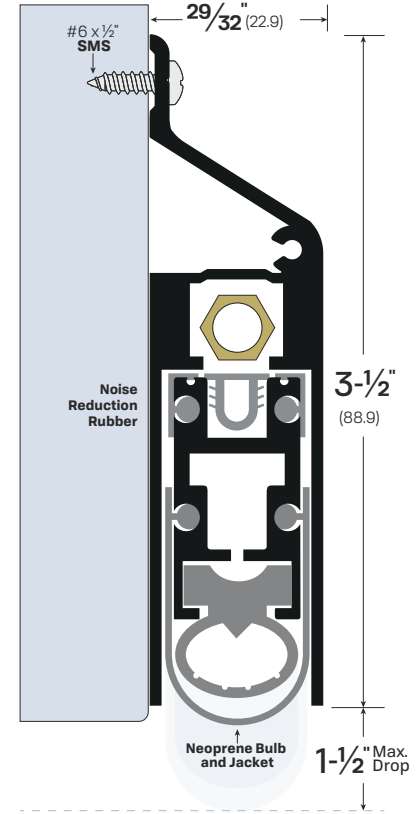
#7093



#7593



#7793



FINISHES: CA, MB, WP

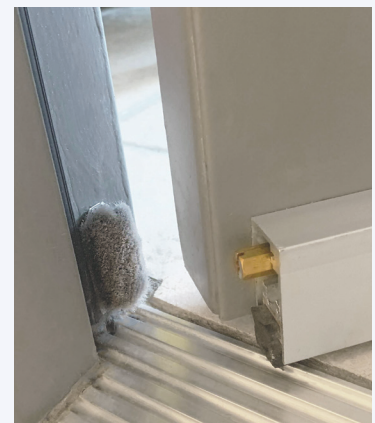
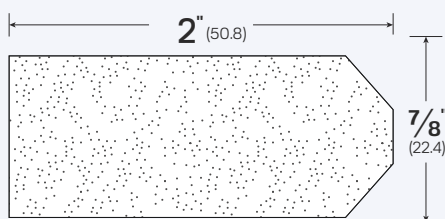
AVAILABLE SIZES: Can be manufactured to any length from 12" to 96"

OPTIONS: FX - Intumescent SF - Security Fasteners

NOTES:

- For use on doors with an excessive undercut or uneven floor.
- Adjusting the brass nut changes pressure on concealed internal spring to satisfy field conditions.
- Self-leveling door seal up to maximum 1-1/2" drop.
- Unit supplied with 1 pair of end caps - Part #4093EC-CA or #4093EC-MB

#545DP Corner Dust Plug



NOTES:

- Material is a grey Pile Brush
- Also available in Black (BW) and White (WH)
- Double-sided adhesive backing

HOW TO ORDER: #545DP

LEGACY	NGP	PEMKO	ZERO
545DP	54CP	ACPI12BL	2541