

# LCN ILLUSTRATED PARTS LIST "Introduction"

## How to Use the LCN Parts List

The *LCN Illustrated Parts List* is designed to help technical service or maintenance personnel correctly identify parts that may be required to return an LCN closer to service.

## Parts List Organization

The *LCN Illustrated Parts List* identifies replacement parts that are available through many LCN distributors. The sections, in order, are the 4000 Series, the 1000 Series, the Fire/Life Safety Series, the High Security Series, & the Power Operator Series. Closers are listed in numerical order within each section. Major components such as cylinder assemblies, covers, arm assemblies, & track assemblies are listed within each individual closer series. Many times, a complete component assembly has individual replacement parts available.

## Casting (Forging) Numbers

Many LCN parts or components have casting or forging numbers stamped or raised on the surface. An example would be the '71' or '320G' on an LCN cylinder assembly. These numbers really do not identify a particular part or component. You should follow the 'How to Order' page in the latest edition of the LCN Catalog or call LCN Customer Service for assistance.

## Additional Information

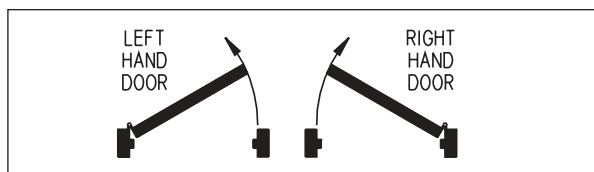
In addition to the closer series, suffix number, and short description, many parts and components require more information. Items that require more information have letters listed to the right of the description. The letter(s) are defined as follows.

**F – Finish.** Indicate the powder coat or plated finish desired. Not all parts and components are available with a plated finish. Refer to either the latest edition of the LCN Catalog

or the current LCN Price List for a standard powder coat finish chart and available plated finish designations. A bright metallic (MTLPC) finish is also available. Bright metallic is a powder coat alternative to US26D. RAL custom finishes are also available.

**S – Size.** Refers to the spring power of the closer. The larger the number, the more power the closer may have to close a door. Several closer series have an adjustable 'size 1' available. In many cases, a 'size 1' closer will meet low opening force requirements. Some 'size 1' closers are not adjustable. Please refer to the latest edition of the LCN Catalog for clarification on individual closer spring power.

**H – Hand.** Please specify either RH (Right Hand) or LH (Left Hand). The hand of a door can be determined several ways. The latest edition of the LCN Catalog has an easy to use diagram that may be utilized as a reference.



**V – Voltage.** Some parts and components require voltage. Please specify either 24v or 120v.

## Part and Component Pricing

Prices for parts and components listed with the *LCN Illustrated Parts List* can be found in the current LCN Price List. The Price List contains basic ordering & product information.

# LCN ILLUSTRATED PARTS LIST "Introduction"

## How to Order

1. Identify the closer series; 4110, 4040, 1460, 1520, 2030, 3130, 4310ME, etc.
2. Refer to the page(s) illustrating the service parts available for the specific closer and select the part required by using the closer series and the suffix.
3. Check to the right of the part description. If additional information is required, please provide it.
4. Order the parts required using the closer series, suffix number, finish, size, hand, and/or voltage.

## Part or Component Identification

If the part you require is not shown in the **LCN Illustrated Parts List**, it may be obsolete. Contact your distributor, your local Security & Safety Consultants office or LCN Customer Service.

## Ordering Examples

Here are a few examples of what an item may look like as it is ordered. Please refer to the 'How to Order' page at the end of each individual closer series within the LCN Catalog.

2310ME-3351 x On/Off Switch x 24v  
4040SE-3038 x Track x AL x 120v  
4020T-72MC x Metal Cover x RH x AL  
4313ME-3971 x Cylinder x LH x AL x 24v  
3130-3054 Hold Open Clip  
4040-62PA x Parallel Arm Shoe x DKBRZ  
4010-18 Plate x AL  
1520-3077SCNS Arm x BRASS  
2030-169 Bumper Assembly  
4640-3462 Controller Assembly  
7910-956 Actuator  
SEM7850-825 Door Armature Only

## Trademarks

List of trademarks that may appear in the **LCN Illustrated Parts List**. This list includes but is not limited to the following:

Cush-n-Stop®	Equalizer®
Pacer®	Quest®
Sentronic®	Shield and Device®
Smoothee®	Thriftee®
Super Stock®	Super Smoothee®

## Additional Assistance

If any additional assistance is needed, call LCN at (800) 526-2400. Our Customer Service or Technical Support Team will do their very best to offer door control solutions on any of the products listed within the **LCN Illustrated Parts List**.

## Please note....

Every effort has been made to insure the accuracy of the **LCN Illustrated Parts List**. If an error does exist, please contact LCN Customer Service. Errors and omissions will be incorporated into the next edition of the **LCN Illustrated Parts List**. Illustrations are designed to show general shape and size of a part and the relationship that part has to other parts. Actual size and shape of parts or components may differ or vary from the actual part or component that is shipped. LCN offers this information as a reference only. All information is subject to change without notice from LCN. If any additional information is needed, please call LCN Customer Service or Technical Support at (800) 526-2400. You may also visit LCN on the web at [www.lcnclosers.com](http://www.lcnclosers.com).

# LCN ILLUSTRATED PARTS LIST "Table of Contents"

GENERAL SECTION	PAGE
Introduction .....	1-2
Table of Contents .....	3

## 4000 SERIES SURFACE MOUNTED CLOSERS

4010 .....	1
4010T .....	5
4020 .....	9
4020T .....	13
4030 .....	17
4040 .....	19
4040T .....	27
4110 .....	31
4110T .....	37
4130 .....	41
4000T .....	45

## 1000 SERIES SURFACE MOUNTED CLOSERS

1070 .....	1
1370 .....	5
1460 .....	9
1460T .....	17
1520 .....	21
1520T .....	27

## CONCEALED CLOSERS .....

330 .....	1
2010 .....	3
2030 .....	5
3030 .....	7
3130 .....	9
5010 .....	11
5030 .....	13
6030 .....	17

FIRE/LIFE SAFETY CLOSER/HOLDERS	PAGE
7800SEM .....	1
3130SE .....	3
4040SE .....	5
2310ME .....	9
4310ME .....	11
4410ME .....	13
4310HSA .....	15
4410HSA .....	17
SEH .....	19

## HIGH SECURITY CLOSERS

2210 .....	1
2210DPS .....	3
4210 .....	5
4210T .....	7
4510 .....	9
4510T .....	11

## POWER OPERATORS

2610 Pneumatic .....	1
4630 Electric .....	3
4640 Electric .....	5
4810 Pneumatic .....	7
4820 Pneumatic .....	9
4840 Pneumatic .....	11
7900 Control Boxes & Accessories .....	15-28

Please specify finish **(F)**, size **(S)**, hand **(H)**, & voltage **(V)** where indicated. See the latest edition of the LCN Catalog for part descriptions and specifications on many of the items shown above. List prices for items shown above can be located in the current LCN Price List.

# LCN 330 SERIES

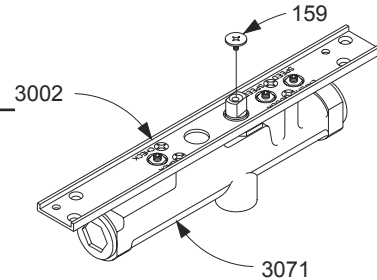
## Cylinder Assemblies

331(2-4)-3071	Cylinder Assembly	F, S, H
	<i>Includes cylinder mounting/finish plate &amp; screw pack</i>	
	<i>(WMS standard – please specify other)</i>	
	<i>Cylinder assembly is size specific (not adjustable)</i>	

## Individual Cylinder Parts

Individual cylinder parts for 330-3071

330-159	Arm Screw	F
330-3002	Mounting/Finish Plate	F, S, H



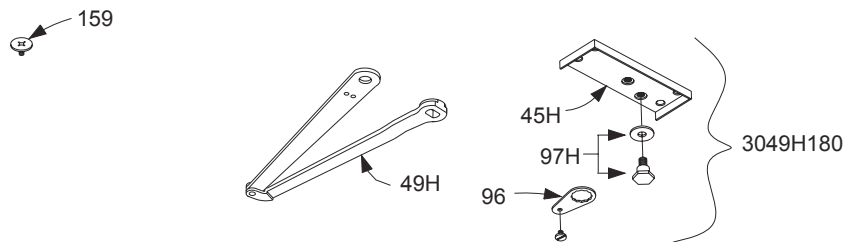
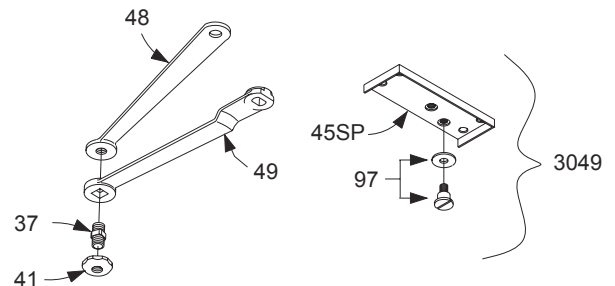
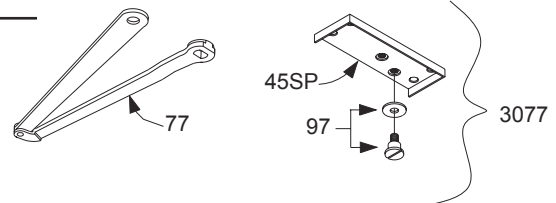
## Complete Arm Assemblies

330-3077	Regular Arm	F, H
	<i>Includes 330-45SP, -77, -97, &amp; -159</i>	
330-3049	Hold-Open Arm	F, H
	<i>Includes 330-37, -41, -45SP, -48, -49, -97, &amp; -159</i>	
330-3049H180	180 Hold-Open Arm	F, H
	<i>Includes 330-45H, -48, -49H, -96, -97H, &amp; -159</i>	

## Individual Arm Parts

Individual arm parts for 330-3077, -3049, & -3049H180

330-37	Hold-Open Stud	F, H
330-41	Hold-Open Nut	F
330-45H	Hold-Open Shoe Assembly	F, H
	<i>Includes 330-96 &amp; -97H</i>	
330-45SP	HO Shoe Assembly (H180)	F, H
	<i>Includes 330-97</i>	
330-48	Hold-Open Forearm	F, H
330-49	Hold-Open Main Arm	F
330-49H	HO Main & Forearm (H180)	F, H
330-77	Main Arm & Forearm	F, H
330-96	Bushing Assembly	F
330-97	Screw & Washer Set	F
330-97H	Hold-Open Stud & Washer Set	F, H
330-159	Arm Screw	F



Please specify finish (F), size (S), hand (H), & voltage (V) where indicated. See the latest edition of the LCN Catalog for part descriptions and specifications on many of the items shown above. List prices for items shown above can be located in the current LCN Price List.

# LCN 2010 SERIES

## Cylinder Assemblies

2011(3-6)-3071	Cylinder Assembly	F, S, H
<i>Includes cylinder mounting/finish plate &amp; screw pack</i>		
<i>(WMS standard – please specify other)</i>		
<i>Cylinder assembly is size specific (not adjustable)</i>		

## Individual Cylinder Parts

Individual cylinder parts for 2010-3071

2010-159	Arm Screw	F
----------	-----------	---

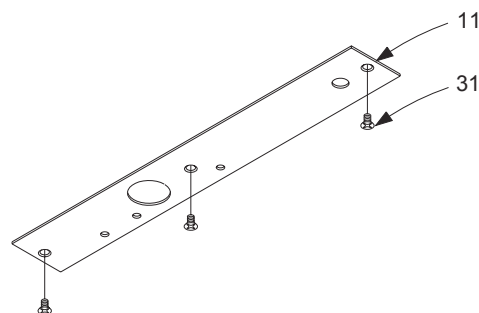
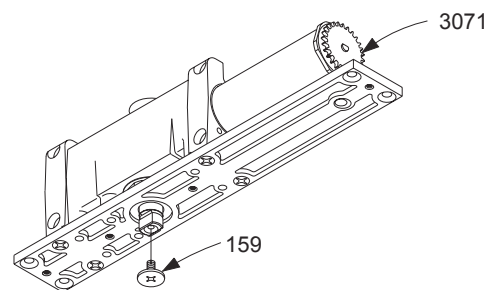
## Finish Plate

2010-11	Finish Plate	F, S, H
<i>Includes 2010-31 (3)</i>		

## Individual Finish Plate Parts

Individual finish plate parts for 2010-11

2010-31	Finish Plate Screw	F
---------	--------------------	---



Please specify finish **(F)**, size **(S)**, hand **(H)**, & voltage **(V)** where indicated. See the latest edition of the LCN Catalog for part descriptions and specifications on many of the items shown above. List prices for items shown above can be located in the current LCN Price List.

# LCN 2010 SERIES

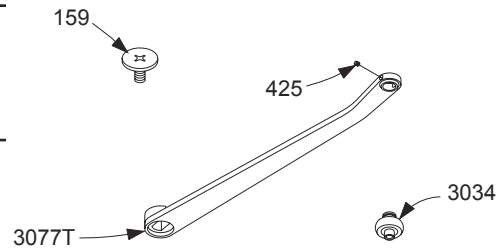
## Complete Arm Assemblies

2010-3077T	Standard Arm	F, H
<i>Includes 2010-159 &amp; -425</i>		

## Individual Arm Parts

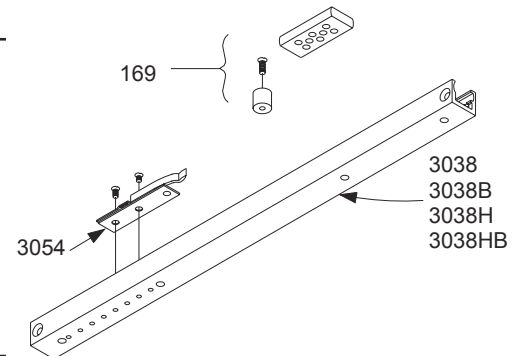
Individual arm parts for 2010-3077T

2010-159	Arm Screw	F
2010-425	Roller Locking Screw	
2010-3034	Track Roller	



## Complete Track Assemblies

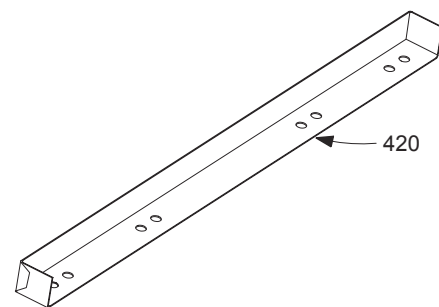
2010-3038	Standard Track	F
2010-3038B	Standard Track w/Bumper	F
<i>Includes 2010-169</i>		
2010-3038H	Standard Track w/Hold-Open	F
<i>Includes 2010 -3054</i>		
2010-3038HB	Standard Track w/HO & Bump	F
<i>Includes 2010 -169, &amp; -3054</i>		



## Individual Track Parts

Individual track parts for 2010-3038, -3038B, 3038H, & -3038HB

2010-169	Bumper Assembly	
<i>Includes post &amp; mounting screws</i>		
2010-3034	Track Roller	
2010-3054	Hold-Open Spring Clip	
<i>Includes mounting screws</i>		



## Installation Accessories

2010-420	Fire Shield	
----------	-------------	--

Please specify finish (**F**), size (**S**), hand (**H**), & voltage (**V**) where indicated. See the latest edition of the LCN Catalog for part descriptions and specifications on many of the items shown above. List prices for items shown above can be located in the current LCN Price List.

# LCN 2030 SERIES

## Cylinder Assemblies

2031(2-5)-3071	Cylinder Assembly	F, S, H
<i>Includes cylinder mounting/finish plate &amp; screw pack</i>		
<i>(WMS standard – please specify other)</i>		
<i>Cylinder assembly is size specific (not adjustable)</i>		

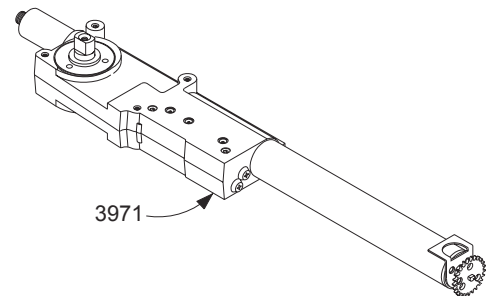
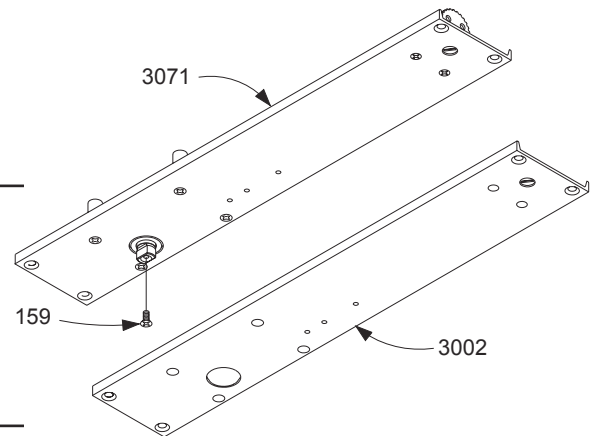
## Individual Cylinder Parts

Individual cylinder parts for 2030-3071

2030-159	Arm Screw	F
2031(2-5)-3971	Cylinder Only	F, S, H
<i>Does not include mounting/finish plate</i>		
<i>Cylinder assembly is size specific (not adjustable)</i>		

## Finish Plate

2030-3002	Mounting/Finish Plate	F, H
-----------	-----------------------	------



Please specify finish (**F**), size (**S**), hand (**H**), & voltage (**V**) where indicated. See the latest edition of the LCN Catalog for part descriptions and specifications on many of the items shown above. List prices for items shown above can be located in the current LCN Price List.

# LCN 2030 SERIES

## Complete Arm Assemblies

2030-3077T	Standard Arm	F, H
<i>Includes 2030-159, &amp; -425</i>		

## Individual Arm Parts

Individual arm parts for 2030-3077T

2030-159	Arm Screw	F
2030-425	Roller Locking Screw	F
2030-3034	Track Roller	

## Complete Track Assemblies

2030-3038	Standard Track	F
2030-3038B	Standard Track w/Bumper	F
<i>Includes 2030-169</i>		
2030-3038H	Standard Track w/Hold-Open	F
<i>Includes 2030 -3054</i>		
2030-3038HB	Standard Track w/HO & Bump	F
<i>Includes 2030 -169, &amp; -3054</i>		

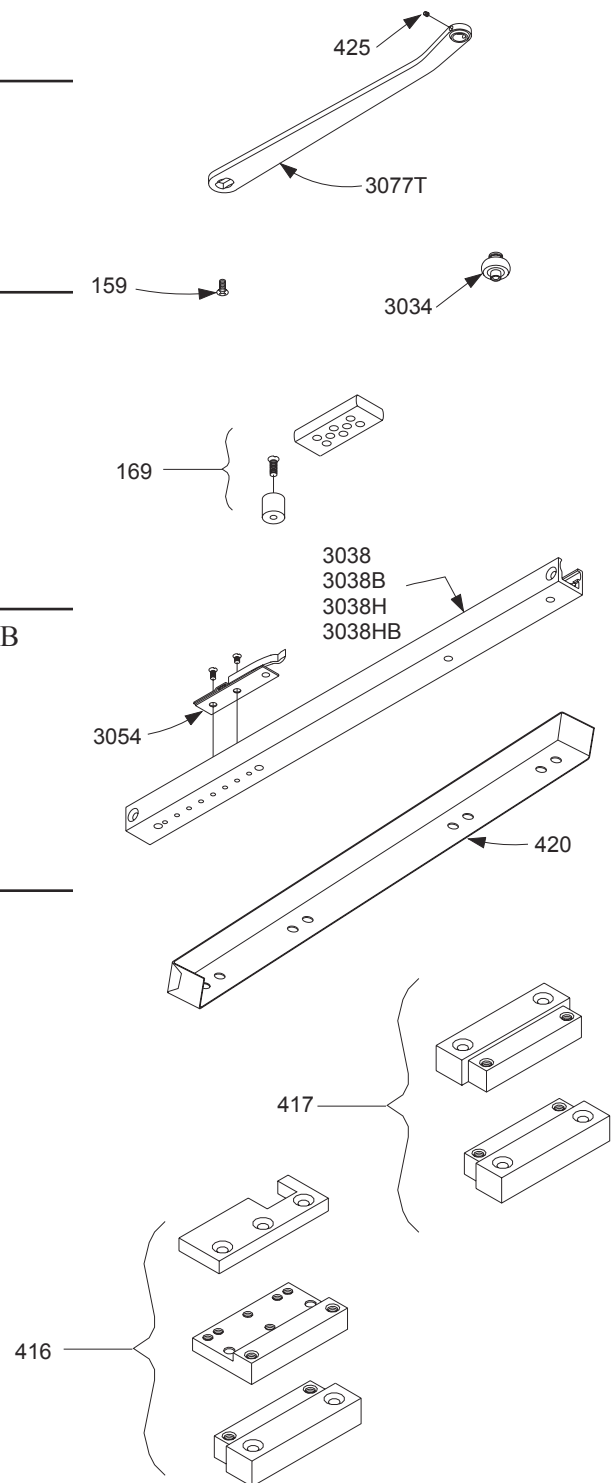
## Individual Track Parts

Individual track parts for 2030-3038, -3038B, 3038H, & -3038HB

2030-169	Bumper Assembly	
<i>Includes post &amp; mounting screws</i>		
2030-3034	Track Roller	
2030-3054	Hold-Open Spring Clip	
<i>Includes mounting screws</i>		

## Installation Accessories

2030-416	Wood Mounting Clip Set	F
<i>Mounts center pivoted 2030 Series closer in wood frames.</i>		
2030-417	Wood Mounting Clip Set	F
<i>Mounts offset pivoted 2030 Series closer in wood frames</i>		
2030-420	Fire Shield	



Please specify finish (F), size (S), hand (H), & voltage (V) where indicated. See the latest edition of the LCN Catalog for part descriptions and specifications on many of the items shown above. List prices for items shown above can be located in the current LCN Price List.



# LCN 3030 SERIES

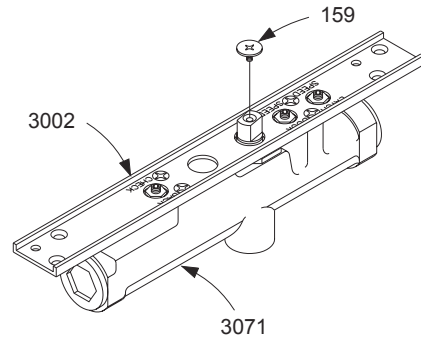
## Cylinder Assemblies

3031(2-4)-3071	Cylinder Assembly	F, S, H
	<i>Includes cylinder mounting/finish plate &amp; screw pack</i>	
	<i>(WMS standard – please specify other)</i>	
	<i>Cylinder assembly is size specific (not adjustable)</i>	

## Individual Cylinder Parts

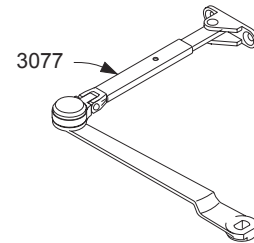
Individual cylinder parts for 3030-3071

3030-159	Arm Screw	F
3030-3002	Mounting/Finish Plate	F, S, H



## Complete Arm Assemblies

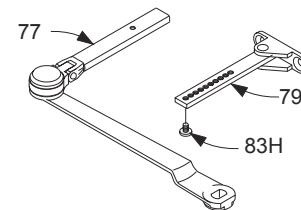
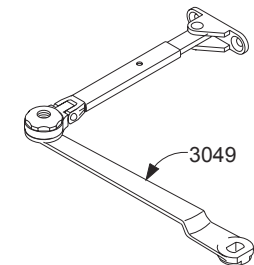
3030-3077	Regular Arm	F
	<i>Includes 3030-77, -79, -83 &amp; -159</i>	
3030-3049	Hold-Open Arm	F, H
	<i>Includes 3030-37, -41, -48, -49, -79H, -83H &amp; -159</i>	



## Individual Arm Parts

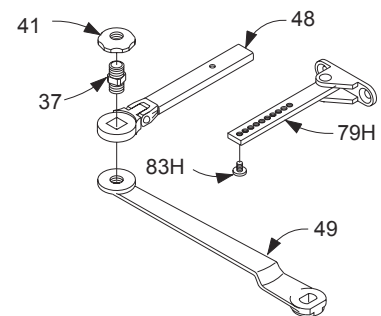
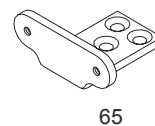
Individual arm parts for 3030-3077 & -3049

3030-37	Hold-Open Stud	F, H
3030-41	Hold-Open Nut	F
3030-48	Hold-Open Forearm	F
3030-49	Hold-Open Main Arm	F, H
	<i>Includes 3030-159</i>	
3030-77	Main Arm & Forearm	F
	<i>Includes 3030-159</i>	
3030-79	Rod & Shoe Assembly	F
	<i>Includes 3030-83H</i>	
3030-79H	HO Rod & Shoe Assemble	F
	<i>Includes 3030-83H</i>	
3030-83H	H Arm Screw	F
3030-159	Arm Screw	F



## Installation Accessories

3030-65	Soffit Shoe	F
---------	-------------	---



Please specify finish (F), size (S), hand (H), & voltage (V) where indicated. See the latest edition of the LCN Catalog for part descriptions and specifications on many of the items shown above. List prices for items shown above can be located in the current LCN Price List.

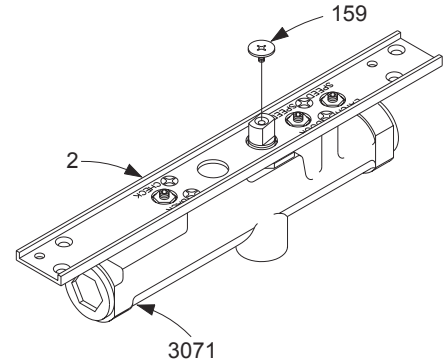
## Cylinder Assemblies

3131(2-3)-3071	Cylinder Assembly	F, S, H
	<i>Includes cylinder mounting/finish plate &amp; screw pack</i>	
	<i>(WMS standard – please specify other)</i>	
	<i>Cylinder assembly is size specific (not adjustable)</i>	

## Individual Cylinder Parts

Individual cylinder parts for 3130-3071

3130-2	Mounting/Finish Plate	F, S, H
3130-159	Arm Screw	F



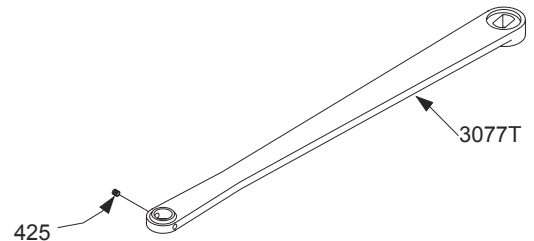
## Complete Arm Assemblies

3130-3077T	Standard Arm	F, H
	<i>Includes 3130-159 &amp; -425</i>	

## Individual Arm Parts

Individual arm parts for 3130-3077T

3130-159	Arm Screw	F
3130-425	Roller Locking Screw	F
3130-3034	Track Roller	



## Complete Track Assemblies

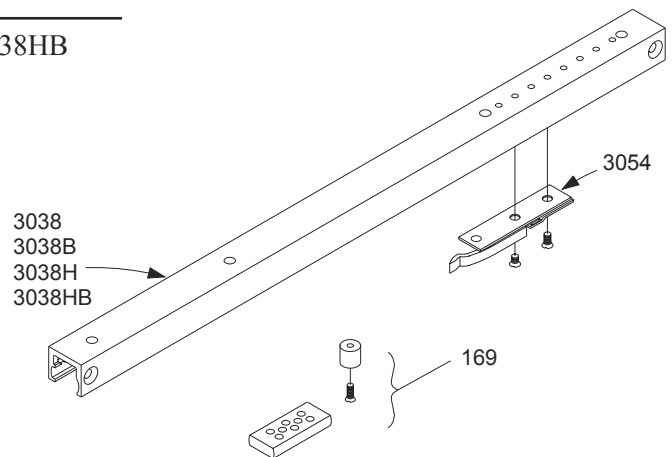
3130-3038	Standard Track	F
3130-3038B	Standard Track w/Bumper	F
	<i>Includes 3130-169</i>	
3130-3038H	Standard Track w/Hold-Open	F
	<i>Includes 3130 -3054</i>	
3130-3038HB	Standard Track w/HO & Bump	F
	<i>Includes 3130 -169, &amp; -3054</i>	



## Individual Track Parts

Individual track parts for 3130-3038, -3038B, 3038H, & -3038HB

3130-169	Bumper Assembly	
	<i>Includes post &amp; mounting screws</i>	
3130-3034	Track Roller	
3130-3054	Hold-Open Spring Clip	
	<i>Includes mounting screws</i>	



Please specify finish (F), size (S), hand (H), & voltage (V) where indicated. See the latest edition of the LCN Catalog for part descriptions and specifications on many of the items shown above. List prices for items shown above can be located in the current LCN Price List.

## Cylinder Assemblies

5011(2-6)-3071	Cylinder Assembly	F, S, H
	<i>Includes cylinder mounting/finish plate &amp; screw pack (WMS standard – please specify other) Cylinder assembly is size specific (not adjustable)</i>	
5011(2-5)-3071DEL	Delay Cylinder Assembly	F, S, H
	<i>Includes cylinder mounting/finish plate &amp; screw pack (WMS standard – please specify other) Cylinder assembly is size specific (not adjustable)</i>	

## Individual Cylinder Parts

Individual cylinder parts for 5010-3071 & -3071DEL

5010-159	Arm Screw	F
5010-3002	Mounting/finish plate	F, S, H

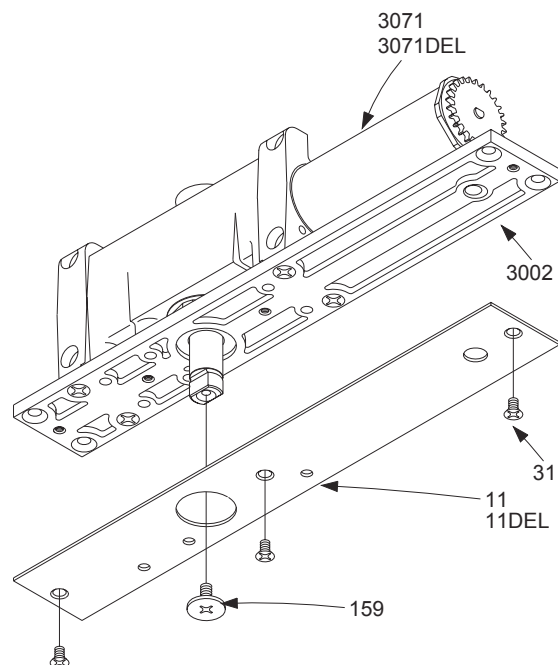
## Finish Plate

5010-11	Finish Plate	F, S, H
	<i>Includes 5010-31 (3)</i>	
5010-11DEL	Delay Finish Plate	F, S, H
	<i>Includes 5010-31 (3)</i>	

## Individual Finish Plate Parts

Individual finish plate parts for 5010-11 & -11DEL

5010-31	Finish Plate Screw	F
---------	--------------------	---



Please specify finish (**F**), size (**S**), hand (**H**), & voltage (**V**) where indicated. See the latest edition of the LCN Catalog for part descriptions and specifications on many of the items shown above. List prices for items shown above can be located in the current LCN Price List.

# LCN5010 SERIES

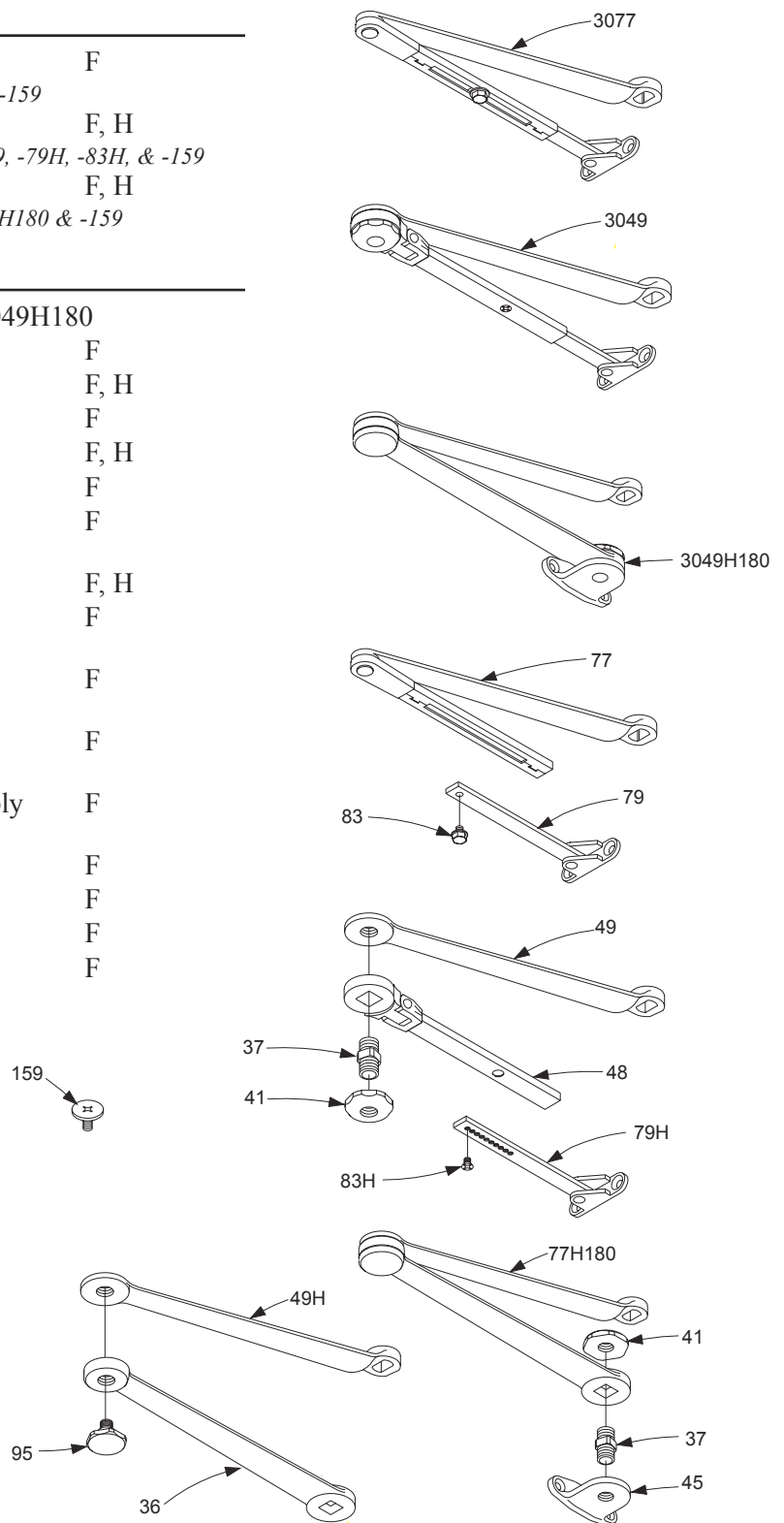
## Complete Arm Assemblies

5010-3077	Regular Arm	F
	<i>Includes 5010-77, -79, -83, &amp; -159</i>	
5010-3049	Hold-Open Arm	F, H
	<i>Includes 5010-37, -41, -48, -49, -79H, -83H, &amp; -159</i>	
5010-3049H180	180 Hold-Open Arm	F, H
	<i>Includes 5010-37, -41, -45, 77H180 &amp; -159</i>	

## Individual Arm Parts

Individual arm parts for 5010-3077, -3049, & -3049H180

5010-36	H180 Forearm	F
5010-37	Hold-Open Stud	F, H
5010-41	Hold-Open Nut	F
5010-45	Hold-Open Shoe	F, H
5010-48	Forearm	F
5010-49	Hold-Open Main Arm	F
	<i>Includes 5010-159</i>	
5010-49H	H180 Main Arm	F, H
5010-77	Main Arm & Forearm	F
	<i>Includes 5010-159</i>	
5010-77H180	Arm Assembly	F
	<i>Includes 5010-159</i>	
5010-79	Rod & Shoe Assembly	F
	<i>Includes 5010-83</i>	
5010-79H	HO Rod & Shoe Assembly	F
	<i>Includes 5010-83H</i>	
5010-83	Arm Screw	F
5010-83H	H Arm Screw	F
5010-95	Arm Stud	F
5010-159	Arm Screw	F



Please specify finish (F), size (S), hand (H), & voltage (V) where indicated. See the latest edition of the LCN Catalog for part descriptions and specifications on many of the items shown above. List prices for items shown above can be located in the current LCN Price List.

# LCN 5030 SERIES

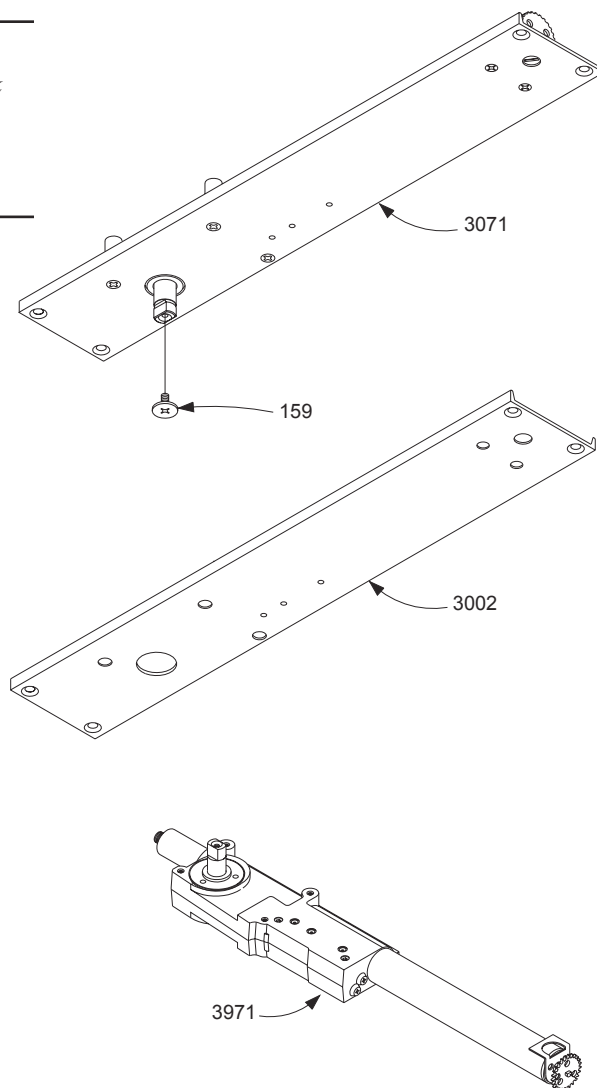
## Cylinder Assemblies

5031(2-6)-3071	Cylinder Assembly	F, S, H
	<i>Includes cylinder mounting/finish plate &amp; screw pack</i>	
	<i>(WMS standard – please specify other)</i>	
	<i>Cylinder assembly is size specific (not adjustable)</i>	

## Individual Cylinder Parts

Individual cylinder parts for 5030-3071

5030-159	Arm Screw	F
5030-3002	Finish Plate	F, H
5031(2-6)-3971	Cylinder Only	F, S, H
	<i>Does not include mounting/finish plate</i>	
	<i>Cylinder assembly is size specific (not adjustable)</i>	



Please specify finish (**F**), size (**S**), hand (**H**), & voltage (**V**) where indicated. See the latest edition of the LCN Catalog for part descriptions and specifications on many of the items shown above. List prices for items shown above can be located in the current LCN Price List.

# LCN 5030 SERIES

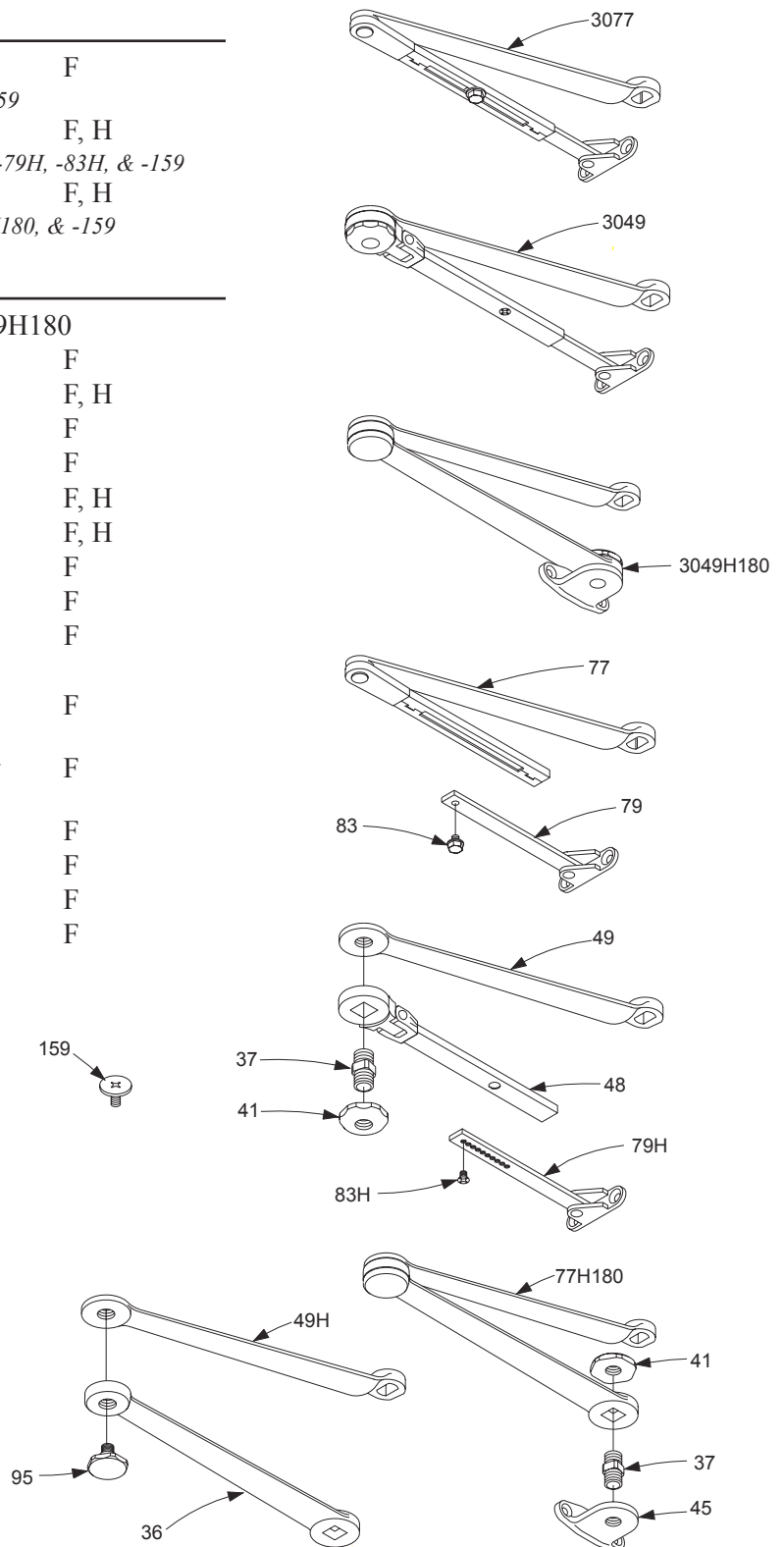
## Complete Arm Assemblies

5030-3077	Regular Arm	F
	<i>Includes 5030-77, -79, -83, &amp; -159</i>	
5030-3049	Hold-Open Arm	F, H
	<i>Includes 5030-37, -41, -48, -49, -79H, -83H, &amp; -159</i>	
5030-3049H180	180 Hold-Open Arm	F, H
	<i>Includes 5030-37, -41, -45, -77H180, &amp; -159</i>	

## Individual Arm Parts

Individual arm parts for 5030-3077, -3049, & -3049H180

5030-36	H180 Forearm	F
5030-37	Hold-Open Stud	F, H
5030-41	Hold-Open Nut	F
5030-45	Hold-Open Shoe	F
5030-48	Forearm	F, H
5030-49	Hold-Open Main Arm	F, H
5030-49H	H180 Main Arm	F
5030-77	Main Arm & Forearm	F
5030-77H180	Arm Assembly	F
	<i>Includes 5030-159</i>	
5030-79	Rod & Shoe Assembly	F
	<i>Includes 5030-83</i>	
5030-79H	HO Rod & Shoe Assembly	F
	<i>Includes 5030-83H</i>	
5030-83	Arm Screw	F
5030-83H	H Arm Screw	F
5030-95	Arm Stud	F
5030-159	Arm Screw	F

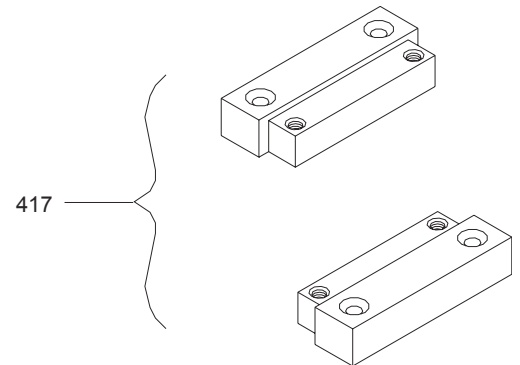
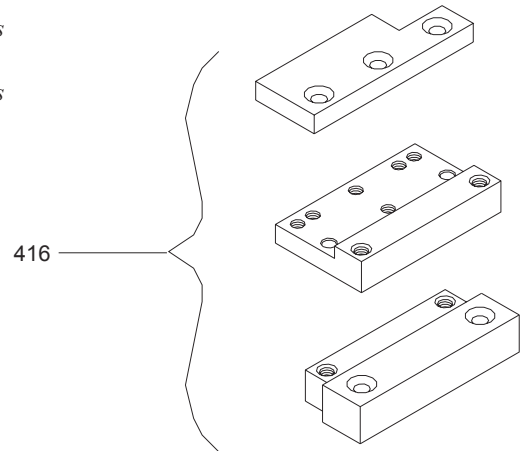


Please specify finish (**F**), size (**S**), hand (**H**), & voltage (**V**) where indicated. See the latest edition of the LCN Catalog for part descriptions and specifications on many of the items shown above. List prices for items shown above can be located in the current LCN Price List.

# LCN 5030 SERIES

## Installation Accessories

5030-416	Wood Mounting Clip Set	F
	<i>Mounts offset pivoted 5030 Series closer in wood frames</i>	
5030-417	Wood Mounting Clip Set	F
	<i>Mounts offset pivoted 5030 Series closer in wood frames</i>	



Please specify finish **(F)**, size **(S)**, hand **(H)**, & voltage **(V)** where indicated. See the latest edition of the LCN Catalog for part descriptions and specifications on many of the items shown above. List prices for items shown above can be located in the current LCN Price List.

# LCN 6030 SERIES

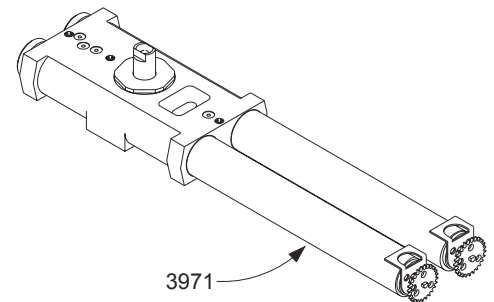
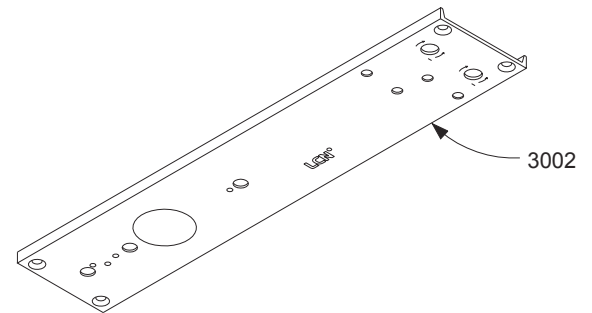
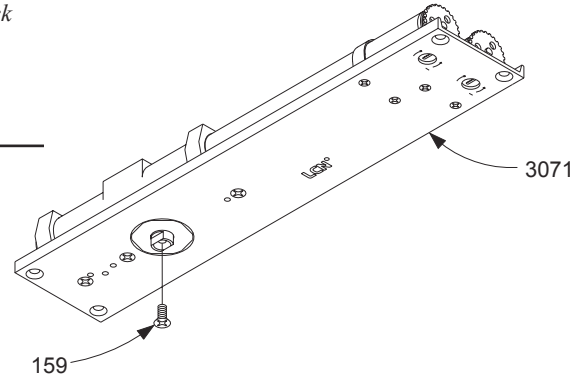
## Cylinder Assemblies

6031(2-5)-3071      Cylinder Assembly      F, S  
*Includes cylinder mounting/finish plate & screw pack*  
*(WMS standard – please specify other)*  
*Cylinder assembly is size specific (not adjustable)*

## Individual Cylinder Parts

Individual cylinder parts for 6030-3071

6030-159      Arm Screw      F  
6030-3002      Finish Plate      F, S  
6031(2-5)-3971      Cylinder Only      F, S  
*Does not include mounting/finish plate*  
*Cylinder assembly is size specific (not adjustable)*



Please specify finish **(F)**, size **(S)**, hand **(H)**, & voltage **(V)** where indicated. See the latest edition of the LCN Catalog for part descriptions and specifications on many of the items shown above. List prices for items shown above can be located in the current LCN Price List.



# LCN 6030 SERIES

## Complete Arm Assemblies

6030-3077T	Standard Arm	F
<i>Includes 6030-83, -159, &amp; -425</i>		

## Individual Arm Parts

Individual arm parts for 6030-3077T

6030-83	Arm Set Screw	F
6030-159	Arm Screw	F
6030-425	Roller Locking Screw	F
6030-3034	Track Roller	
<i>(Special low friction roller)</i>		
<i>Includes snubber</i>		

## Complete Track Assemblies

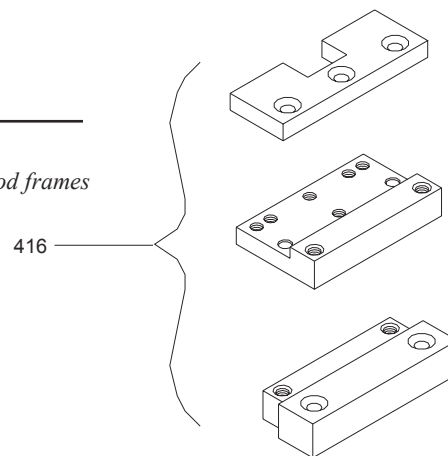
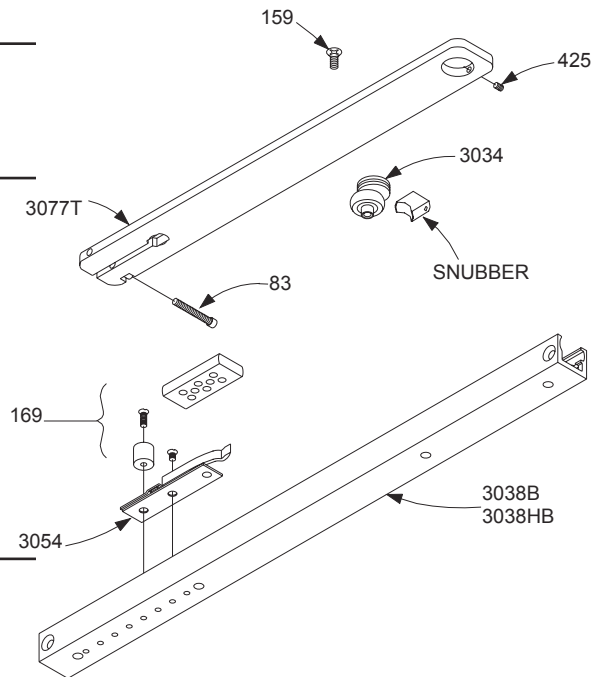
6030-3038B	Standard Track w/ Bumper	F
<i>Includes 6030-169</i>		
6030-3038HB	Standard Track w/Bump & HO	F
<i>Includes 6030-169, &amp; -3054</i>		

## Individual Track Parts

6030-169	Bumper Assembly	
<i>Includes post &amp; mounting screws</i>		
6030-3034	Track Roller	
6030-3054	Hold-Open Spring Clip	
<i>Includes mounting screws</i>		

## Installation Accessories

6030-416	Wood Mounting Clip Set	F
<i>Mounts center pivoted 6030 Series closer in wood frames</i>		



Please specify finish (**F**), size (**S**), hand (**H**), & voltage (**V**) where indicated. See the latest edition of the LCN Catalog for part descriptions and specifications on many of the items shown above. List prices for items shown above can be located in the current LCN Price List.