

Larsen & Shaw, *the hinge people*® Since 1919, offers quality hinge solutions by providing customers with responsive, reliable on-time delivery at a competitive price.

Aluminum hinges provide a light-weight corrosion resistant solution for your hinge application. These hinges are commonly used in marine applications and other areas where the environment contains moisture, such as recreational vehicles, shower doors and truck tool boxes. Aluminum hinges can be supplied raw or finished (anodized, painted).

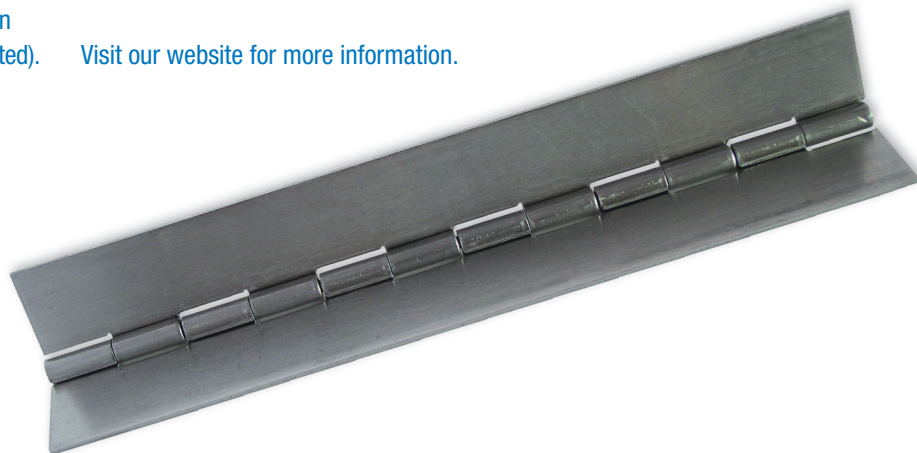
Hinges may be ordered directly from our stock, or customized to suit your application. We have the broadest range of hinges in the industry, from 0.024" to 0.180" thick and are committed to having the shortest lead-time of any manufacturer.

For detailed standard product information or to submit an electronic request for quote, please refer to our fully searchable database on our website.

Visit our website for more information.

Features

- 0.024" gauge - 0.180" gauge available
- Fully customizable
- Cleaning available
- Supports the full length of the door
- Custom packaging and labeling available



Larsen & Shaw Limited :: t.f 1.800.265.3078
575 Durham Street W :: Box 1420 :: Walkerton :: ON :: Canada :: NOG 2V0 :: www.larsenhinge.com

Material/Pin	Open Widths Available	Knuckle
024/060	3/4 to 2	0.25
032/060	5/8 to 7	0.25
032/080	3/4 to 4	0.50
040/090	7/8 to 4	0.25
040/090	7/8 to 4	0.50
040/100	3/4 to 6	0.50
050/125	1 to 5-1/2	0.50
064/125	1 to 8	0.50
064/125	3/4 to 3	1.00
064/187	1-1/4 to 5-3/8	1.00

Material/Pin	Open Widths Available	Knuckle
064/187	1-1/4 to 8	2.00
064/250	1-1/2 to 8	2.00
080/187	3/4 to 3	1.00
080/187	1-1/4 to 8	2.00
080/250	1-1/2 to 5-3/8	1.00
080/250	1-1/2 to 8	2.00
090/250	1-1/2 to 5-3/8	1.00
090/250	1-1/2 to 8	2.00
125/375	2 to 11	2.00
190/500	3 to 14	2.00



Butt Hinge

Larsen & Shaw, *the hinge people*®
Since 1919, offers quality hinge solutions by providing customers with responsive, reliable on-time delivery at a competitive price.

We supply butt hinges for both the wood-working and the metalworking industries. Our hinges are commonly found on lockers, enclosures, medical or laboratory furniture as well as wooden furniture and caskets.

Our butt hinges range in material thickness from 0.035" to 0.075" and are offered in raw steel, post plated zinc or yellow zinc finishes. Loose joint (flag) hinges can be offered in a variety of sizes. Hinges may be ordered directly from our stock, or customized to suit your application.

For detailed standard product information or to submit an electronic request for quote, please refer to our fully searchable database on our website.

Visit our website for more information.

Larsen & Shaw Limited :: t.f 1.800.265.3078
575 Durham Street W :: Box 1420 :: Walkerton :: ON :: Canada :: NOG 2V0 :: www.larsenhinge.com



Larsen & Shaw, *the hinge people*® Since 1919, offers quality hinge solutions by providing customers with responsive, reliable on-time delivery at a competitive price.

Larsen & Shaw has over 87 years of experience in tooling, manufacturing and finishing. For this reason, custom hinge designs have become our specialty. It is through our understanding of value for customer that we develop our hinge designs and service programs.

Our 93,000 square foot facility boasts in-house tool & die, high speed manufacturing and automated rack and barrel plating. Our Quality Management System has been registered to ISO 9001-2000 and we operate under the principles of Lean Management.

For detailed standard product information or to submit an electronic request for quote, please refer to our fully searchable database on our website.

Visit our website for more information.

Features

- 0.024" gauge - 0.180" gauge available
- steel, stainless steel, aluminum, galvanized, solid brass
- Customization available: length, width, pierce pattern, form, swage, imprint, emboss, trim, notch, lance, plated, painted, anodized or brushed finishes, packaging and/or labelling *Cleaning available



Larsen & Shaw Limited :: t.f 1.800.265.3078

575 Durham Street W :: Box 1420 :: Walkerton :: ON :: Canada :: N0G 2V0 :: www.larsenhinge.com

Material/ Pin	Open Widths Available	Knuckle	Notes
024/060	3/4 to 2	0.25	
030/060	5/8 to 7	0.25	
030/080	3/4 to 4	0.50	
030/090	3/4 to 4	0.25	Quick-A-Line Available
040/090	7/8 to 4	0.25	Inside stop hinge
040/090	7/8 to 4	0.50	
040/100	3/4 to 6	0.50	
050/125	1 to 5-1/2	0.50	
060/125	1 to 8	0.50	Quick-A-Line Available
060/125	3/4 to 3	1.00	
060/187	3/4 to 5-3/8	1.00	

Material/ Pin	Open Widths Available	Knuckle
060/187	1-1/4 to 8	2.00
060/250	1-1/2 to 8	2.00
075/187	3/4 to 3	1.00
075/187	1-1/4 to 8	2.00
075/250	1-1/2 to 5-3/8	1.00
075/250	1-1/2 to 8	2.00
090/250	1-1/2 to 5-3/8	1.00
090/250	1-1/2 to 8	2.00
120/375	2 to 11	2.00
180/500	3 to 14	2.00



Larsen & Shaw, *the hinge people*® Since 1919, offers quality hinge solutions by providing customers with responsive, reliable on-time delivery at a competitive price.

PermAlign hinges are Larsen & Shaw's creative solution to the common problem of doors and gates that sag. Traditional hinges fasten to only one surface. The screws transfer the forces being applied from various directions to the mounting material (wood or metal). As the screw holes enlarge in the mounting material the door or gate sags.



PermAlign hinges make the overall system 90% stronger than conventional strap & tee hinges. This innovative family of hinges features new 2-sided and 3-sided designs that 'wrap around' the points of attachment, thus effectively transferring the forces of the swinging load to the stationary structure. As a result, the screws only need to withstand the much smaller downward force of gravity. The benefit is a hinging system that can handle greater loads while eliminating sag.

These hinges also allow quick and easy installation since they instantly and permanently align themselves with the points of attachment on multiple surfaces, in lumber, metal, or plastic. This ensures that all hinges in the system are perfectly aligned with each other.

Visit our website for more information.

Features

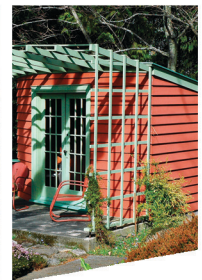
- U-bracket, strap and butt styles available in any combination
- Available in a variety of plated and painted finishes
- 0.187" diameter plated fixed pin with spun heads
- Heavy duty 13 gauge (0.090") steel and stainless steel
- Packaged in bulk with barcode labels on each hinge. Other packaging options are available
- Special order options - hinges can be ordered with removable pins. For extreme heavy duty applications - available with welded knuckles, or in longer lengths (increments of 4") to become a single continuous hinge along the full height of the gate or door.

Larsen & Shaw Limited :: t.f 1.800.265.3078

575 Durham Street W :: Box 1420 :: Walkerton :: ON :: Canada :: N0G 2V0 :: www.larsenhinge.com

Style	Weight (lbs) / Hinge	Part #	Finish	Carton Qty	Hinge UPC	Package UPC
33 Hinge	1.12	211333HZP	Zinc	10	77561600016	2077561600016
		211333HPF	Black	10	77561600017	2077561600017
32 Strap	1.00	211332SZP	Zinc	10	77561600018	2077561600018
		211332SPF	Black	10	77561600019	2077561600019
32 Butt	0.82	211332BZP	Zinc	10	77561600020	2077561600020
		211332BPF	Black	10	77561600021	2077561600021
22 Strap	0.87	211322SZP	Zinc	10	77561600022	2077561600022
		211322SPF	Black	10	77561600023	2077561600023
22 Tee	0.70	211322TZP	Zinc	10	77561600024	2077561600024
		211322TPF	Black	10	77561600025	2077561600025
22 Butt	0.52	211322BZP	Zinc	10	77561600026	2077561600026
		211322BPF	Black	10	77561600027	2077561600027

Notes: 1) minimum invoice requirement is \$400 • 2) packaged 10 hinges/carton • 3) each hinge labelled • 4) Minimum product order of 500 pcs (may combine models)



Strap & Tee Hinge

Larsen & Shaw, *the hinge people*® Since 1919, offers quality hinge solutions by providing customers with responsive, reliable on-time delivery at a competitive price.

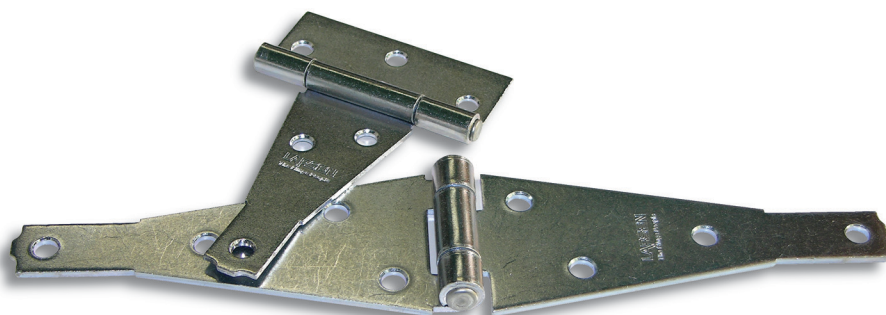
Heavy Duty Strap & Tee hinges by Larsen & Shaw are a solid and versatile solution to many hinging needs around your customer's home, cottage, business or farm.

Although designed for rugged service, they can be finished to provide an attractive appearance for residential applications. Our hinges are available in zinc plated finish or plain steel for painting or powder coating and are packaged in convenient quantities for retail distribution. The product and packaging also comes with Larsen & Shaw's UPC code labeling, for your convenience.

Visit our website for more information.

Features

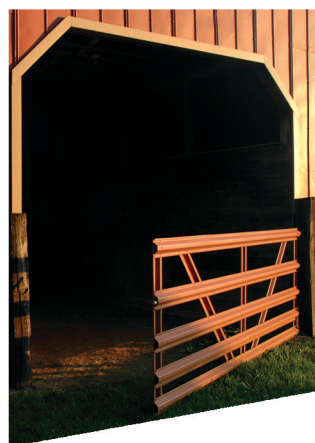
- Heavy duty construction
- Zinc plated pins for extra protection from corrosion
- Brass pins also available - minimum quantities apply
- Spun pin ends for security
- Post-plated in-house at Larsen & Shaw



Larsen & Shaw Limited :: t.f 1.800.265.3078

575 Durham Street W :: Box 1420 :: Walkerton :: ON :: Canada :: N0G 2V0 :: www.larsenhinge.com

Style	Part #	Finish	Weight (lbs) /Hinge	Gauge	Ctnsk Screw Size #	Pin Dia.	Inner Carton	Master Carton	Hinge UPC	Inner Carton UPC	Master Carton UPC
4" Strap	2113011ZP	Zinc	0.29	0.090"	9	0.250"	10	100	775616000460	20775616000464	30775616000461
6" Strap	2104001ZP	Zinc	0.86	0.120"	10	0.332"	10	40	775616000378	20775616000372	30775616000379
8" Strap	2105001ZP	Zinc	1.25	0.134"	10	0.375"	10	40	775616000385	20775616000389	30775616000386
10" Strap	2106001ZP	Zinc	1.84	0.134"	12	0.437"	N/A	10	775616000392	N/A	30775616000393
4" Tee	2113012ZP	Zinc	0.35	0.090"	9	0.250"	10	100	775616000477	20775616000471	30775616000478
6" Tee	2104002ZP	Zinc	0.82	0.120"	10	0.332"	10	40	775616000347	20775616000341	30775616000348
8" Tee	2105002ZP	Zinc	1.28	0.134"	10	0.375"	10	40	775616000354	20775616000358	30775616000355
10" Tee	2106002ZP	Zinc	2.07	0.134"	12	0.437"	N/A	10	775616000361	N/A	30775616000362



Larsen & Shaw, *the hinge people*® Since 1919, offers quality hinge solutions by providing customers with responsive, reliable on-time delivery at a competitive price.

In-house automated plating systems provide the highest quality post-plated finishes in the industry. Because we plate the hinges after they have been manufactured there are no raw edges or machine oil and the finish is far superior to that of a pre-plated hinge. Common decorative finishes are nickel, brass, electro-black, statuary bronze and pewter. We also offer a protective zinc plated finish.

Decorative plated hinges are suitable for interior applications such as furniture, cabinets and appliances. Zinc plated hinges are suitable for applications where some corrosion protection is required as a lower-cost alternative to stainless steel or aluminum.

Bulk, distributor or retail packaging is available. Retail packaging consists of hinges that are shrink wrapped with screws and Larsen & Shaw cards complete with UPC for display purposes.

We have the broadest range of steel hinge in the industry, from 0.024" to 0.180" thick and are committed to having the shortest lead-time of any manufacturer. Hinges may be ordered directly from our stock, or customized to suit your application.

For detailed standard product information or to submit an electronic request for quote, please refer to our fully searchable database on our website.

Features

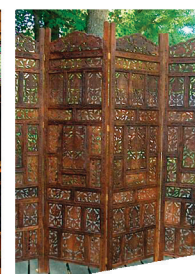
- In-house post-plated finishes
- 0.024" gauge - 0.180" gauge available
- Fully customizable
- Custom packaging and labeling available
- Supports the full length of the door
- Available in Flash Brass, Nickel, Statuary Bronze, Pewter, Zinc and others

Larsen & Shaw Limited :: t.f 1.800.265.3078
575 Durham Street W :: Box 1420 :: Walkerton :: ON :: Canada :: N0G 2V0 :: www.larsenhinge.com

Material/ Pin	Open Widths Available	Knuckle	Notes
024/060	3/4 to 2	0.25	
030/060	5/8 to 7	0.25	
030/080	3/4 to 4	0.50	
030/090	3/4 to 4	0.25	Quick-A-Line Available
040/090	7/8 to 4	0.25	Inside stop hinge
040/090	7/8 to 4	0.50	
040/100	3/4 to 6	0.50	
050/125	1 to 5-1/2	0.50	
060/125	1 to 8	0.50	Quick-A-Line Available
060/125	3/4 to 3	1.00	
060/187	1-1/4 to 5-3/8	1.00	

Material/ Pin	Open Widths Available	Knuckle
060/187	1-1/4 to 8	2.00
060/250	1-1/2 to 8	2.00
075/187	3/4 to 3	1.00
075/187	1-1/4 to 8	2.00
075/250	1-1/2 to 5-3/8	1.00
075/250	1-1/2 to 8	2.00
090/250	1-1/2 to 5-3/8	1.00
090/250	1-1/2 to 8	2.00
120/375	2 to 11	2.00
180/500	3 to 14	2.00

Available in the following finishes: Antique Brass, Dull Brass, Flash Brass, Electro-Black, Nickel, Satin Nickel, Pewter, Statuary Bronze, Zinc



Larsen & Shaw, *the hinge people*® Since 1919, offers quality hinge solutions by providing customers with responsive, reliable on-time delivery at a competitive price.

Type 304 stainless steel hinges are commonly used in applications where corrosion resistance and longevity are key requirements along with aesthetics. For your marine, emergency vehicle, tonneau cover, truck toolbox or other stainless hinge application, trust Larsen & Shaw to provide a high quality hinge that complements your product.

We offer in-house brushing and polishing to provide a superior finish and protect this through specialized packaging.

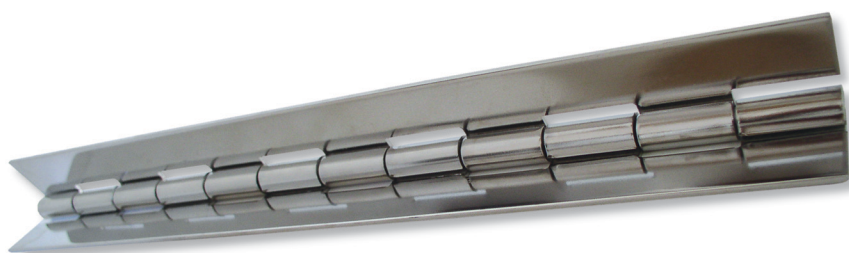
Hinges may be ordered directly from our stock, or customized to suit your application. We have the broadest range of stainless steel hinge in the industry, from 0.024" to 0.180" thick and are committed to having the shortest lead-time of any manufacturer.

For detailed standard product information or to submit an electronic request for quote, please refer to our fully searchable database on our website .

Visit our website for more information.

Features

- High Quality Type 304 Stainless Steel (other grades available)
- 0.024" gauge - 0.180" gauge available
- Brushing & polishing
- Fully customizable
- Cleaning available
- Supports the full length of the door



Larsen & Shaw Limited :: t.f 1.800.265.3078

575 Durham Street W :: Box 1420 :: Walkerton :: ON :: Canada :: NOG 2V0 :: www.larsenhinge.com

Material/Pin	Open Widths Available	Knuckle
024/060	3/4 to 2	0.25
030/060	5/8 to 7	0.25
030/080	3/4 to 4	0.50
030/090	3/4 to 4	0.25
037/100	3/4 to 6	0.50
050/125	1 to 5-1/2	0.50
060/125	1 to 8	0.50
060/125	3/4 to 3	1.00
060/187	1-1/4 to 5-3/8	1.00
060/187	1-1/4 to 8	2.00

Material/Pin	Open Widths Available	Knuckle
060/250	1-1/2 to 8	2.00
075/187	3/4 to 3	1.00
075/187	1-1/4 to 8	2.00
075/250	1-1/2 to 5-3/8	1.00
075/250	1-1/2 to 8	2.00
090/250	1-1/2 to 5-3/8	1.00
090/250	1-1/2 to 8	2.00
120/375	2 to 11	2.00
180/500	3 to 14	2.00



Larsen & Shaw, *the hinge people*® Since 1919, offers quality hinge solutions by providing customers with responsive, reliable on-time delivery at a competitive price.

Continuous hinges are the most versatile and cost effective hinge as they are easily modified for specific applications. Larsen & Shaw specializes in customization and also offers standard hinges from stock. We have the broadest range of steel hinge in the industry, from 0.024" to 0.180" thick!

From small metal boxes to heavy vehicles, we have a hinge that will suit your application.

For detailed standard product information or to submit an electronic request for quote, please refer to our fully searchable database on our website.

Visit our website for more information.

Features

- 0.024" gauge - 0.180" gauge available
- Quick alignment and installation
- Supports the full length of the door
- Quik-A-Line feature for rapid alignment for welding purposes. This feature also prevents paint or finish loss from the barrel, which is the most observable part of the hinge once mounted.
- Fully customizable
- Post-plated & painted finishes available
- Cleaning available



Larsen & Shaw Limited :: t.f 1.800.265.3078
575 Durham Street W :: Box 1420 :: Walkerton :: ON :: Canada :: N0G 2V0 :: www.larsenhinge.com

Material/ Pin	Open Widths Available	Knuckle	Notes
024/060	3/4 to 2	0.25	
030/060	5/8 to 7	0.25	
030/080	3/4 to 4	0.50	
030/090	3/4 to 4	0.25	Quick-A-Line Available
040/090	7/8 to 4	0.25	Inside stop hinge
040/090	7/8 to 4	0.50	
040/100	3/4 to 6	0.50	
050/125	1 to 5-1/2	0.50	
060/125	1 to 8	0.50	Quick-A-Line Available
060/125	3/4 to 3	1.00	
060/187	1-1/4 to 5-3/8	1.00	

Material/ Pin	Open Widths Available	Knuckle
060/187	1-1/4 to 8	2.00
060/250	1-1/2 to 8	2.00
075/187	3/4 to 3	1.00
075/187	1-1/4 to 8	2.00
075/250	1-1/2 to 5-3/8	1.00
075/250	1-1/2 to 8	2.00
090/250	1-1/2 to 5-3/8	1.00
090/250	1-1/2 to 8	2.00
120/375	2 to 11	2.00
180/500	3 to 14	2.00

