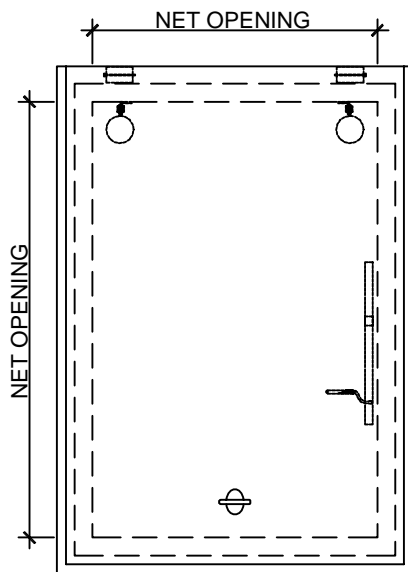


## MODEL - RHG



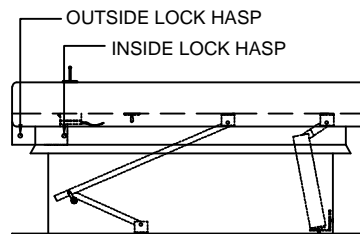
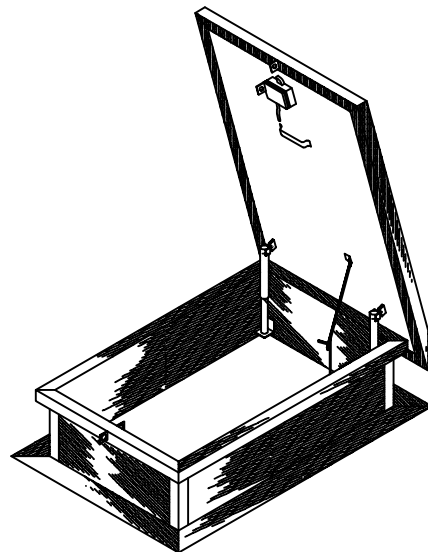
### PLAN VIEW

NOT TO SCALE

MODEL : RHG-  
 NET OPENING :  
 UNITS REQUIRED :  
 FINISH :

### SPECIFICATIONS :

ALL PARTS SHALL BE NEATLY FORMED AND FABRICATED WITH ALL JOINTS AND SEAMS COMPLETELY WELDED TO INSURE WATER TIGHTNESS. COVER, COVER LINER, CURB AND CURB FRAME TO BE FORMED FROM GALVANIZED STEEL AND SUPPLIED WITH A GREY METAL PRIMER FINISH. UNIT SHALL BE SUPPLIED COMPLETELY ASSEMBLED AND READY FOR INSTALLATION. UNIT WILL OPEN TO MAXIMUM 75° POSITION. ACTUAL NUMBER OF SPRING OPERATORS TO BE DETERMINED AS NEEDED FOR SMOOTH OPERATION OF UNIT.

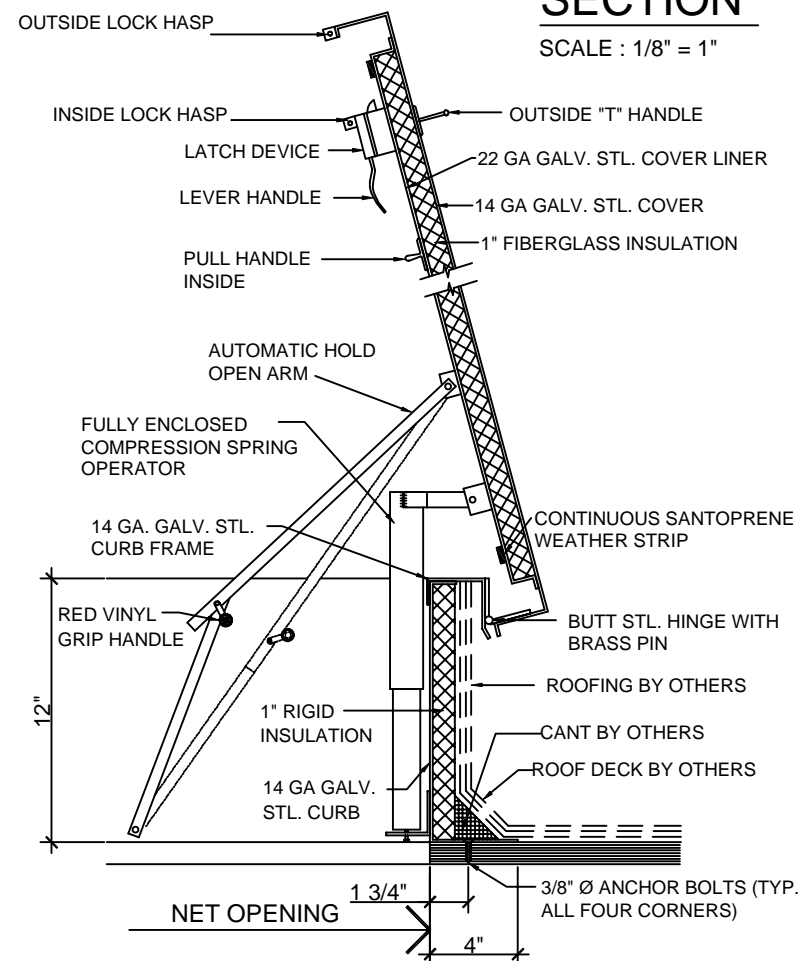


### SIDE VIEW

NOT TO SCALE

## SECTION

SCALE : 1/8" = 1"

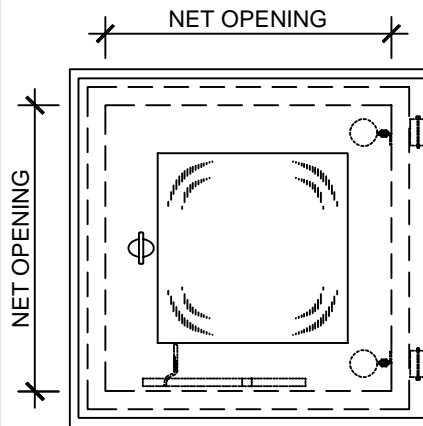


*Lane-Aire* MANUFACTURING CORP.

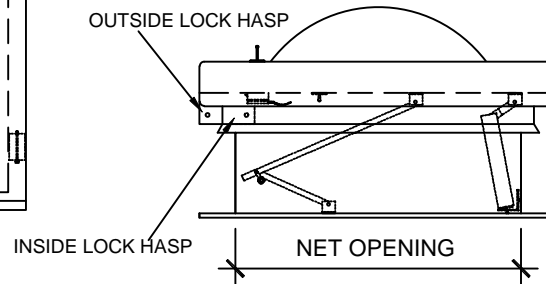
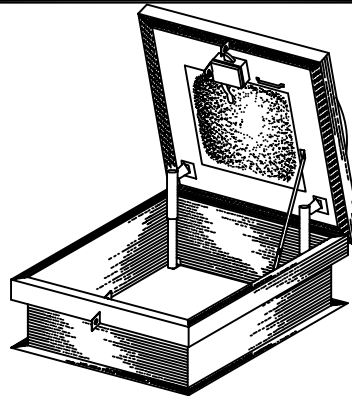
2820 El Presidio Street, Carson, California 90749  
 (323) 636-2324 - FAX (310) 604-3395

|              |             |
|--------------|-------------|
| JOB          | SHEET<br>OF |
| ARCH.        |             |
| CONTR.       |             |
| SUB. CONTR.  | DWG. NO.    |
| DRAWN BY AC- | RHG         |
| DATE:        |             |

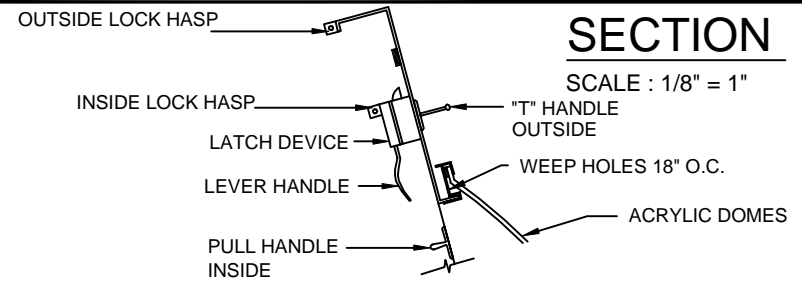
# MODEL - RHD



**PLAN VIEW**  
NOT TO SCALE

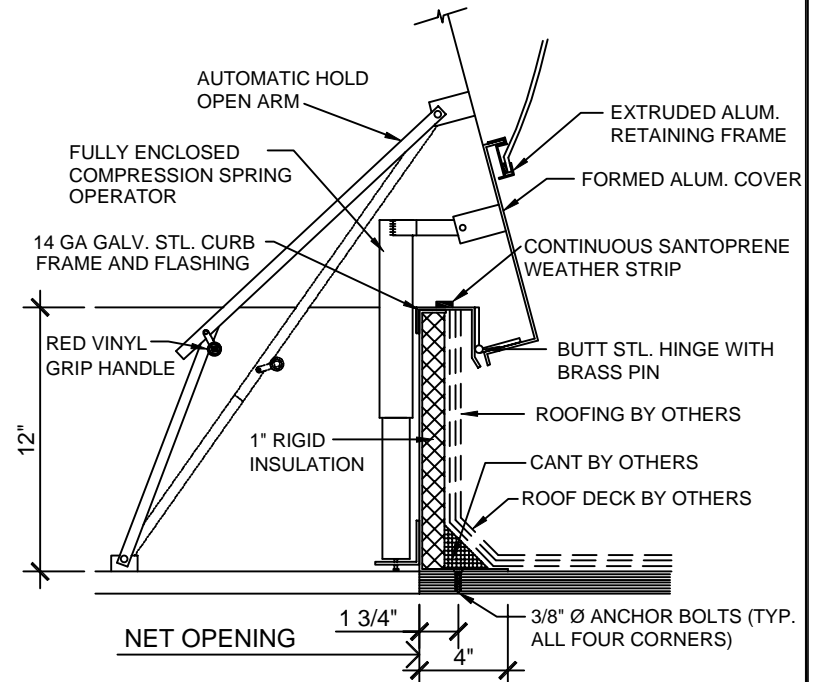


**SIDE VIEW**  
NOT TO SCALE



## SECTION

SCALE : 1/8" = 1"



MODEL : RHD-  
NET OPENING :  
UNITS REQUIRED :  
DOMECOLOR :  
LID FINISH :  
FRAME FINISH :

## SPECIFICATIONS :

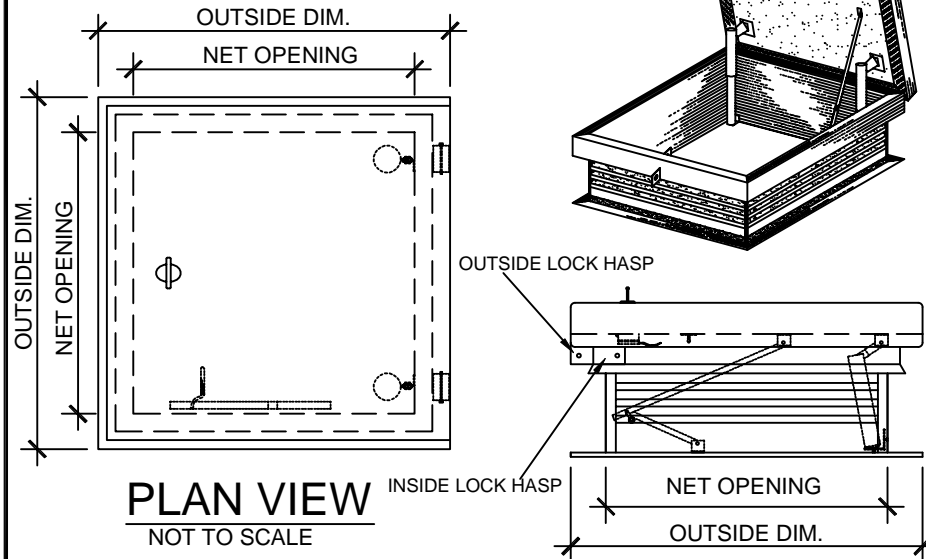
ALL PARTS SHALL BE NEATLY FORMED AND FABRICATED WITH ALL JOINTS AND SEAMS COMPLETELY WELDED TO INSURE WATER TIGHTNESS . ALUMINUM COVER, COVER LINER TO BE MILL FINISH. CURB FRAME AND CURB TO BE PRIME PAINTED. UNIT SHALL BE SUPPLIED COMPLETELY ASSEMBLED AND READY FOR INSTALLATION. UNIT WILL OPEN TO MAXIMUM 75° POSITION. ACTUAL NUMBER OF SPRING OPERATORS TO BE DETERMINED AS NEEDED FOR SMOOTH OPERATION OF UNIT.

**Lane-Aire** MANUFACTURING CORP.

2820 El Presidio Street, Carson, California 90749  
(323) 636-2324 - FAX (310) 604-3395

|              |                 |
|--------------|-----------------|
| JOB          | SHEET<br>OF     |
| ARCH.        |                 |
| CONTR.       | DWG. NO.<br>RHD |
| SUB. CONTR.  |                 |
| DRAWN BY AC- | DATE:           |

## MODEL - RHL



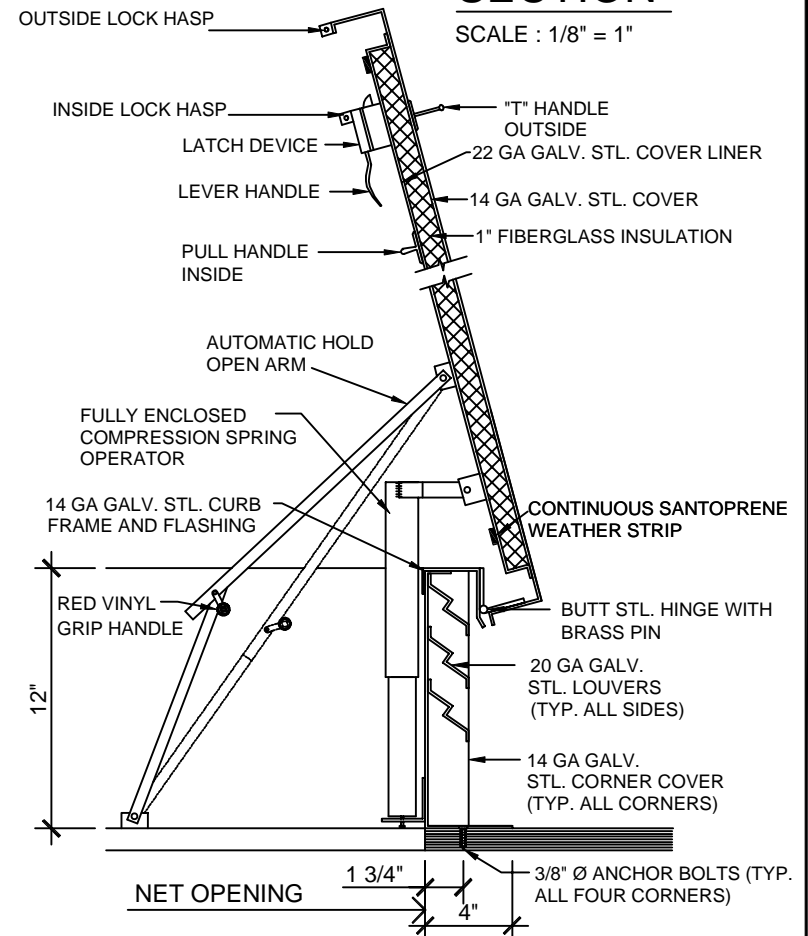
MODEL : RHL-  
 NET OPENING :  
 OUTSIDE DIM. :  
 UNITS REQUIRED  
 FINISH :

### SPECIFICATIONS :

ALL PARTS SHALL BE NEATLY FORMED AND FABRICATED WITH ALL JOINTS AND SEAMS COMPLETELY WELDED TO INSURE WATER TIGHTNESS . COVER LINER, CURB FRAME AND CURB TO BE GALVANIZED STEEL AND SUPPLIED WITH A GRAY METAL PRIME FINISH. UNIT SHALL BE SUPPLIED COMPLETELY ASSEMBLED AND READY FOR INSTALLATION. UNIT WILL OPEN TO MAXIMUM 75° POSITION. ACTUAL NUMBER OF SPRING OPERATORS TO BE DETERMINED AS NEEDED FOR SMOOTH OPERATION OF UNIT.

## SECTION

SCALE : 1/8" = 1"



**Lane-Aire** MANUFACTURING CORP.

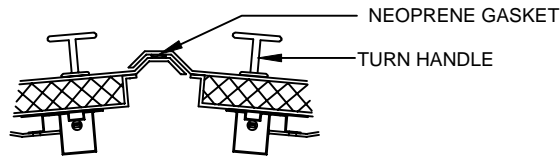
2820 El Presidio Street, Carson, California 90749  
 (323) 636-2324 - FAX (310) 604-3395

|              |                 |
|--------------|-----------------|
| JOB          | SHEET<br>OF     |
| ARCH.        |                 |
| CONTR.       |                 |
| SUB. CONTR.  | DWG. NO.<br>RHL |
| DRAWN BY AC- |                 |
| DATE:        |                 |

# MODEL - EHG

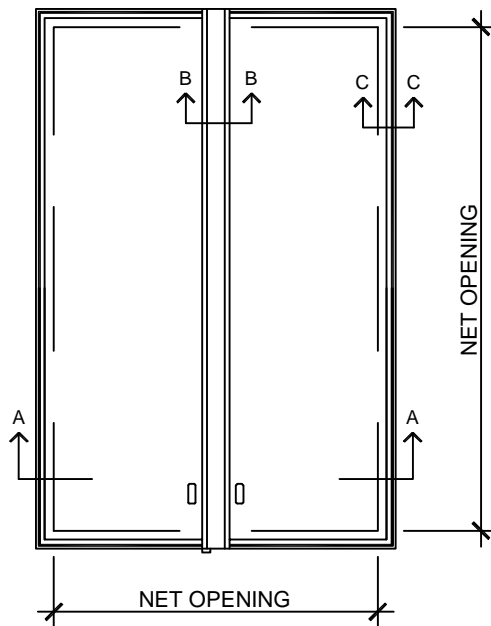
## B-B ; CENTER SPAN

NOT TO SCALE



## PLAN VIEW

NOT TO SCALE

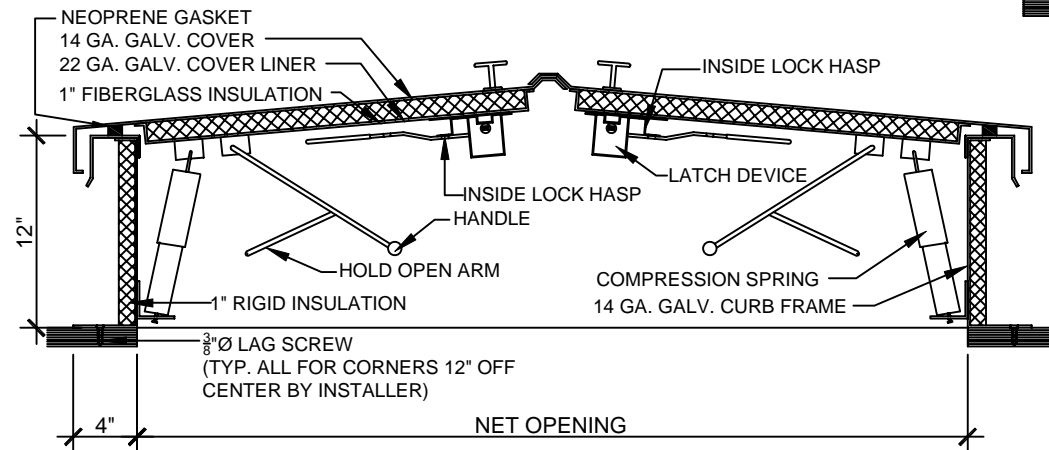


## SPECIFICATIONS :

ALL PARTS SHALL BE NEATLY FORMED AND FABRICATED WITH ALL JOINTS AND SEAMS COMPLETELY WELDED TO INSURE WATER TIGHTNESS. UNIT SHALL BE SUPPLIED COMPLETELY ASSEMBLED AND READY FOR INSTALLATION.

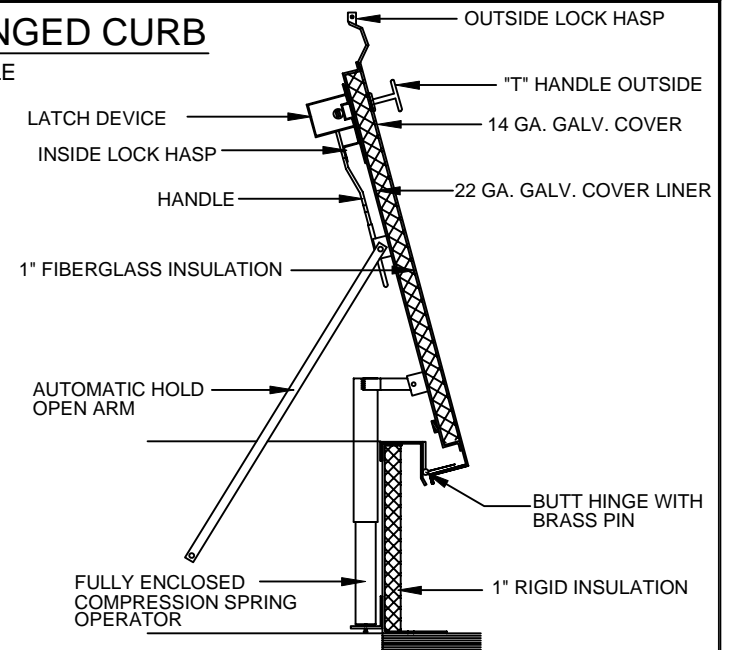
## SECTION A-A

NOT TO SCALE



## C-C ; HINGED CURB

NOT TO SCALE



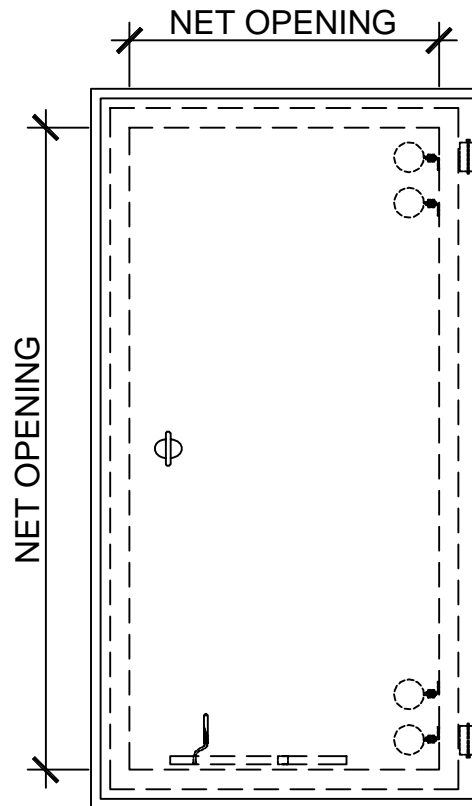
MODEL : EHG-  
NET OPENING :  
UNITS REQUIRED :  
FINISH :

*Lane-Aire* MANUFACTURING CORP.

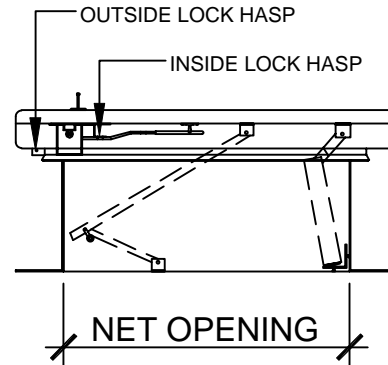
2820 El Presidio Street, Carson, California 90749  
(323) 636-2324 - FAX (310) 604-3395

|              |                          |
|--------------|--------------------------|
| JOB          | SHEET<br>OF              |
| ARCH.        |                          |
| CONTR.       | DWG. NO.<br>EHG<br>2 DR. |
| SUB. CONTR.  |                          |
| DRAWN BY AC- | DATE:                    |

# MODEL - SHG



**PLAN VIEW**  
NOT TO SCALE



**SIDE VIEW**  
NOT TO SCALE

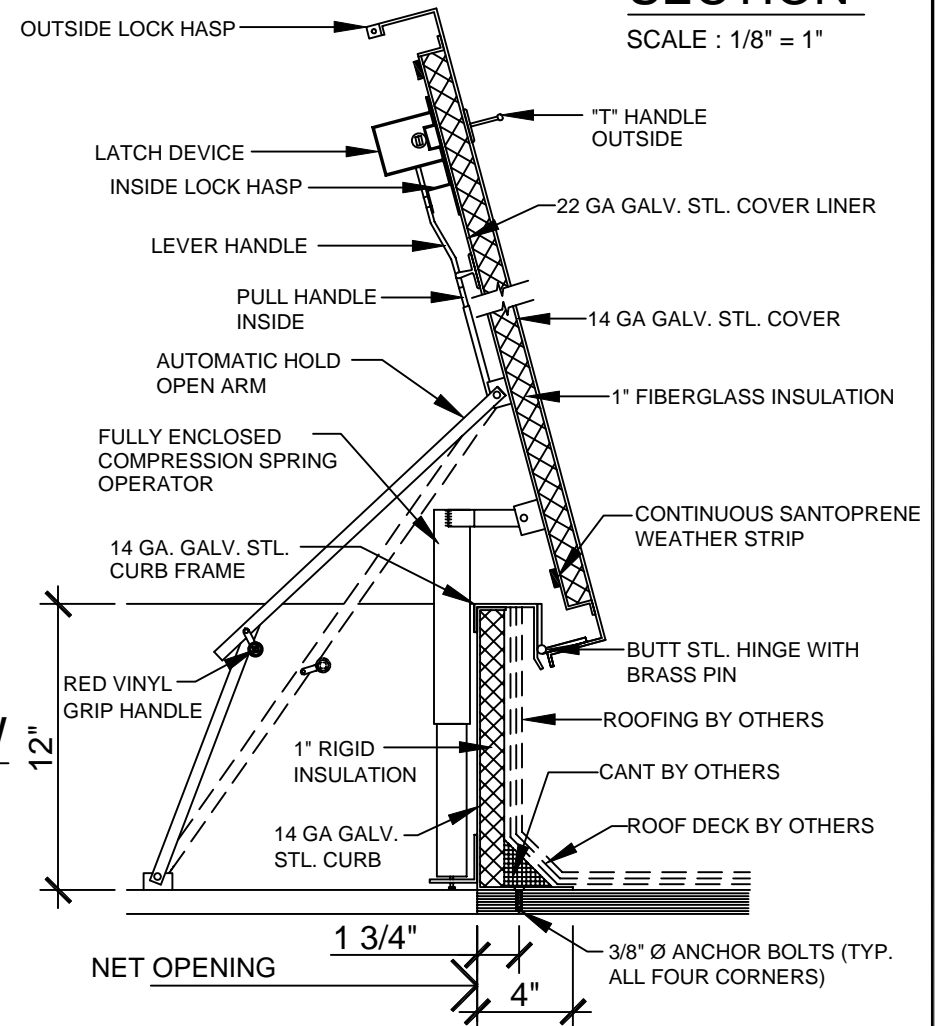
MODEL : SHG-  
NET OPENING :  
UNITS REQUIRED :  
FINISH :

## SPECIFICATIONS :

ALL PARTS SHALL BE NEATLY FORMED AND FABRICATED WITH ALL JOINTS AND SEAMS COMPLETELY WELDED TO INSURE WATER TIGHTNESS . COVER, COVER LINER, CURB AND CURB FRAME TO BE FORMED FROM GALVANIZED STEEL AND SUPPLIED WITH A GRAY METAL PRIMER FINISH. UNIT SHALL BE SUPPLIED COMPLETELY ASSEMBLED AND READY FOR INSTALLATION. UNIT WILL OPEN TO MAXIMUM 75° POSITION. ACTUAL NUMBER OF SPRING OPERATORS TO BE DETERMINED AS NEEDED FOR SMOOTH OPERATION OF UNIT.

## SECTION

SCALE : 1/8" = 1"



**Lane-Aire** MANUFACTURING CORP.

2820 El Presidio Street, Carson, California 90749  
(323) 636-2324 - FAX (310) 604-3395

|              |             |
|--------------|-------------|
| JOB          | SHEET<br>OF |
| ARCH.        |             |
| CONTR.       |             |
| SUB. CONTR.  | DWG. NO.    |
| DRAWN BY AC- | DATE:       |
|              | SHG         |