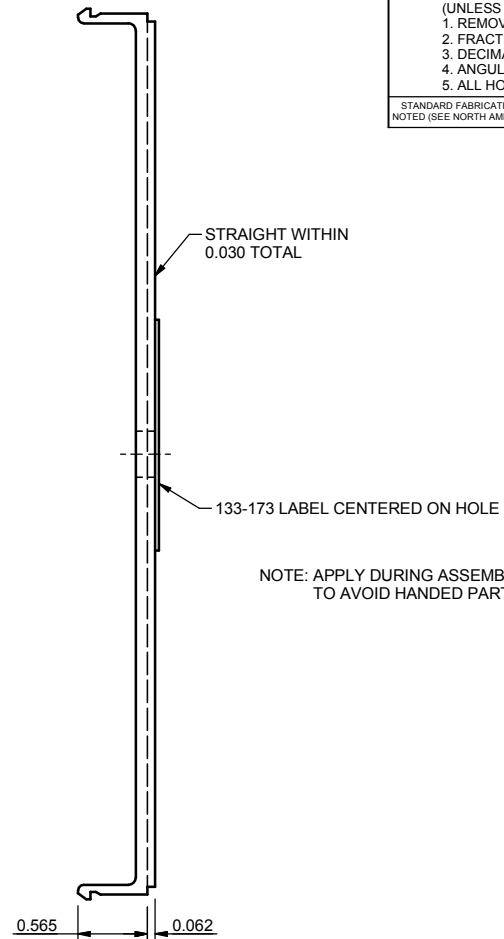


NOTE: SEE D233-049 FOR VARIABLE SIZE
AND PANIC GUARD FILLER PLATES



ACTUAL SIZE

FABRICATION NOTES

- (UNLESS OTHERWISE NOTED)
 1. REMOVE BURRS AND SHARP EDGES
 2. FRACTIONAL DIMENSIONS ±1/32
 3. DECIMAL DIMENSIONS ±0.010
 4. ANGULARITY ±ONE DEGREE
 5. ALL HOLE LOCATIONS ±0.005.

STANDARD FABRICATION TOLERANCES TO APPLY UNLESS OTHERWISE NOTED (SEE NORTH AMERICAN FABRICATION QUALITY PLAN #OMS. 40-Q01)

233496

CONFIDENTIAL AND PROPRIETARY INFORMATION KAWNEER COMPANY INC

THESE DRAWINGS ARE THE SOLE AND EXCLUSIVE PROPERTY OF KAWNEER AND CONTAIN SENSITIVE, PRIVILEGED OR CONFIDENTIAL INFORMATION WHICH MAY BE USED ONLY FOR ITS BENEFIT. THE DISCLOSURE OF THESE DRAWINGS TO UNAUTHORIZED PERSONS IS STRICTLY PROHIBITED. THIS DOCUMENT AND ALL COPIES MUST BE RETURNED UPON DEMAND.
© COPYRIGHT KAWNEER COMPANY, INC., 1991

MADE FROM = 233014
 FINISH CODE(S) =
 WEIGHT (lbs) =

DRAWN MTJ	PART TYPE FABRICATED PART	95425 -	ESTABLISHED	6/14/1991
DATE 9/17/1990	PRODUCT Paneline	ECO	REV	DESCRIPTION
CHECK RDM		PART DESCRIPTION (30 CHRS) PIVOT STILE FILLER PLATE FOR PANELINE		
APPRD F.G.		II CR 90 EXIT DEVICE		
SCALE AS NOTED		PART NUMBER 233496		
	NORCROSS, GA - NPD	1 OF 1		