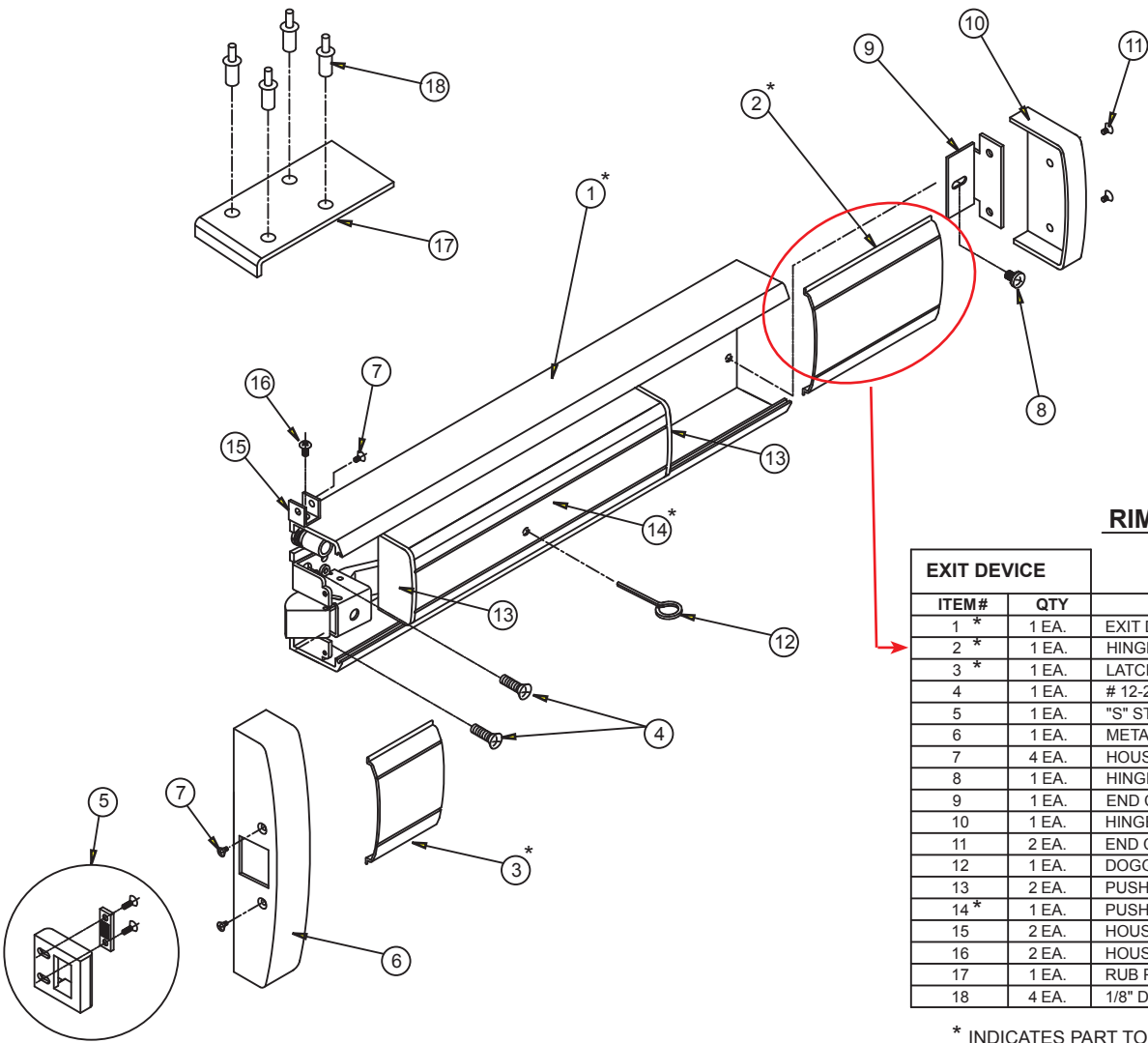


**KAWNEER 1786 RIM EXIT DEVICE
WITH PUSH BAR DOGGING
PARTS BREAKDOWN**



RIM EXIT DEVICE PACKAGE TO INCLUDE:

EXIT DEVICE		
ITEM#	QTY	DESCRIPTION
1 *	1 EA.	EXIT DEVICE BASE ASSEMBLY (SIZED ACCORDING TO PART NUMBER)
2 *	1 EA.	HINGE/PIVOT FILLER PLATE (SIZED ACCORDING TO PART NUMBER)
3 *	1 EA.	LATCH FILLER PLATE
4	1 EA.	# 12-24 PANIC ATTACHMENT FASTENER
5	1 EA.	"S" STRIKE PACKAGE WITH FASTENERS AND LOCK BLOCK (133-588)
6	1 EA.	METAL HOUSING COVER (BLACK MATT FINISH)
7	4 EA.	HOUSING COVER ATTACHMENT FASTENERS (BLACK)
8	1 EA.	HINGE/PIVOT STILE ATTACHMENT FASTENER
9	1 EA.	END CAP MOUNTING BRACKET
10	1 EA.	HINGE/PIVOT END CAP (BLACK MATT FINISH)
11	2 EA.	END CAP FASTENERS (BLACK)
12	1 EA.	DOGGING KEY
13	2 EA.	PUSH PAD END CAPS (BLACK MATT FINISH)
14 *	1 EA.	PUSH PAD ASSEMBLY
15	2 EA.	HOUSING COVER BRACKET
16	2 EA.	HOUSING COVER BRACKET FASTENERS
17	1 EA.	RUB PLATE
18	4 EA.	1/8" DRIVE RIVET

* INDICATES PART TO BE IN COLOR TO BLEND WITH THE DOOR FINISH

KAWNEER FINISH	MANUFACTURER FINISH
17 CLEAR	US28/628
40 BRONZE	DBZ 313

TOUCHBAR RIM EXIT DEVICE		
133580	3'-0"	NON HANDED
133581	3'-6"	NON HANDED
133582	4'-0"	NON HANDED