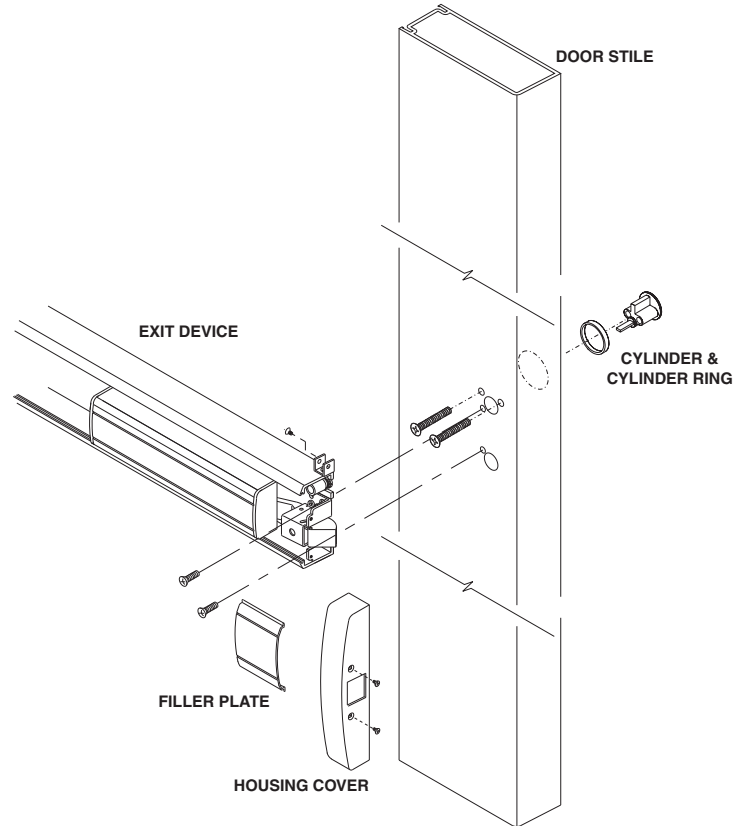
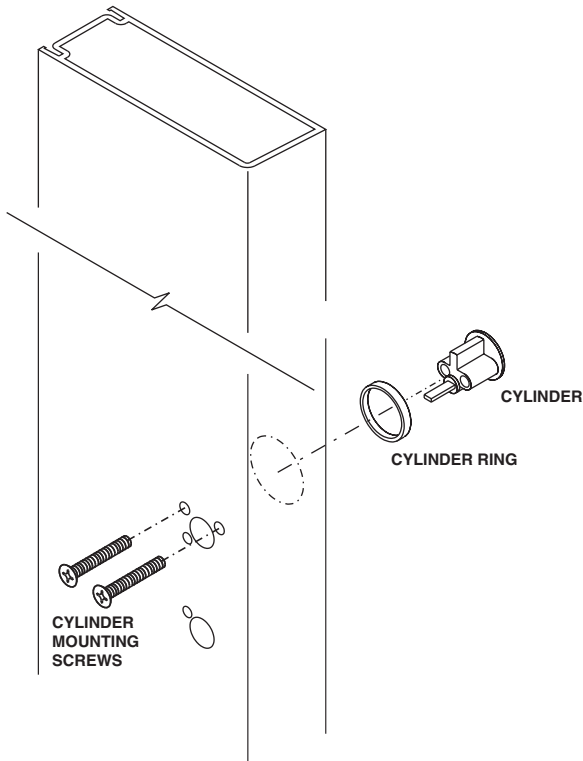


RIM EXIT DEVICE LOCATION



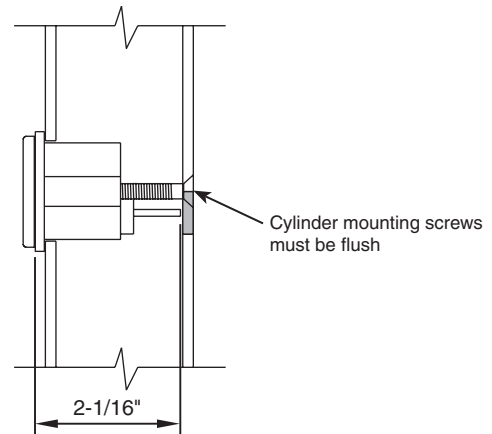
CYLINDER INSTALLATION

Cylinder must be installed before exit device.
Insert cylinder with cylinder ring into the door stile
and secure in place with cylinder mounting screws.



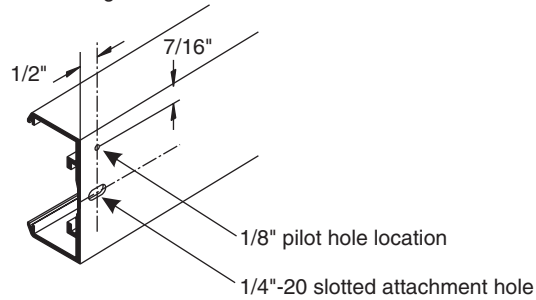
INSTALLING CYLINDERS BY OTHERS

Cut tailpiece to correct length and install.
(Mounting screw heads must be flush with door surface.)

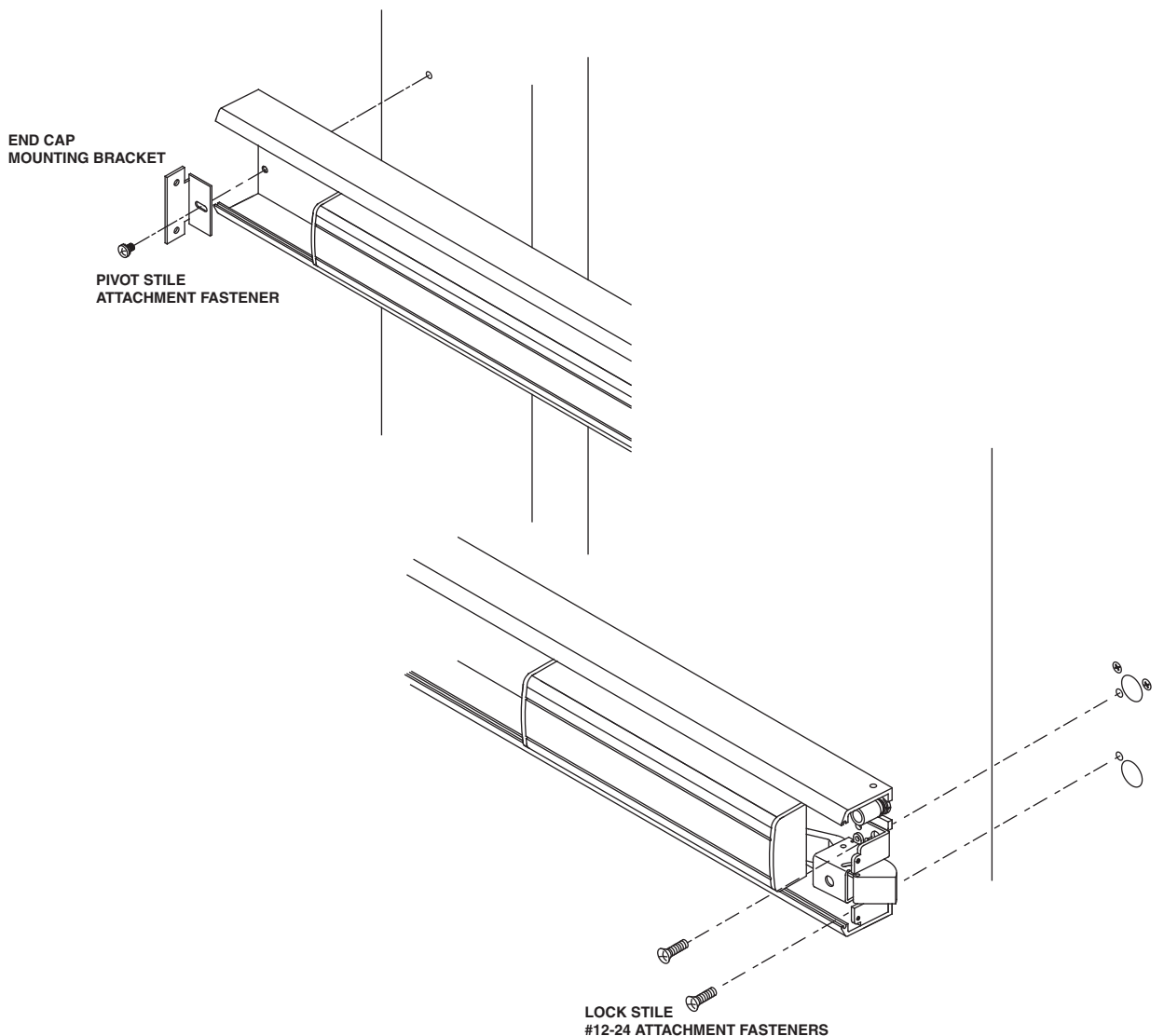


ELECTRICAL WIRE ACCESS

- 1) To prep for quick connect wire access hole, flip exit device over exposing the back side upon a protective surface to prevent damaging finish.
- 2) Locate the 1/4"-20 slotted attachment hole, positioned on the pivot stile of exit device. As a reference point, the wire access hole position is located at corner of exit device housing toward the top of door.
- 3) Mark and prep a 1/8" pilot hole 7/16" from top of exit device directly above the 1/4"-20 slotted attachment hole. The 1/8" pilot hole will be centered approximately 1/2" from edge of exit device housing.

**RIM EXIT DEVICE ATTACHMENT**

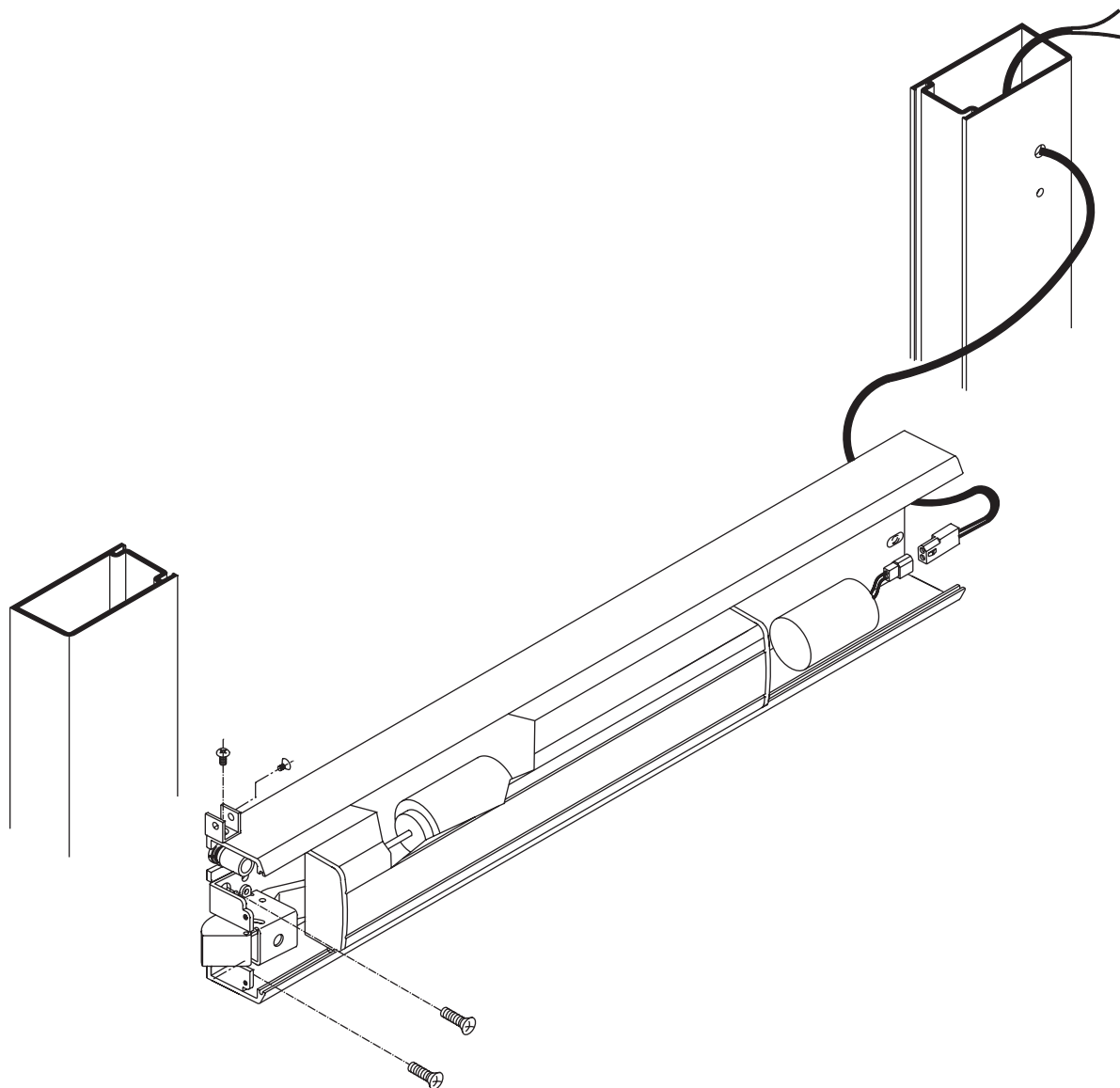
- 4) Attach exit device onto pivot and lock stile of door with fasteners and end cap bracket provided, as indicated below.



Laws and building and safety codes governing the design and use of glazed entrance, window, and curtain wall products vary widely. Kawneer does not control the selection of product configurations, operating hardware, or glazing materials, and assumes no responsibility therefor.

Kawneer reserves the right to change configuration without prior notice when deemed necessary for product improvement.
© Kawneer Company, Inc., 2014

- 5) Using the 1/8" pilot hole as a guide to complete the wire access prep, (at a slight angle) drill a 5/16" hole directly thru the exit device housing and door stile for wire access.
- 6) Remove all burrs inside and outside to prevent wire from be damaged.
- 7) Attach the quick connect from the PWM power booster to the female 48" quick connect cable. (Shipped loose)



- 8) Transfer the wiring from the door to frame using an approved power transfer device.
- 9) Complete the connections from the quick connect cable to power transfer.
- 10) Connect the power transfer to approved power supply.
- 11) Test unit for proper electrical activation.
- 12) Install cover brackets (on top and bottom of device) onto exit device with fasteners provided.

Note:

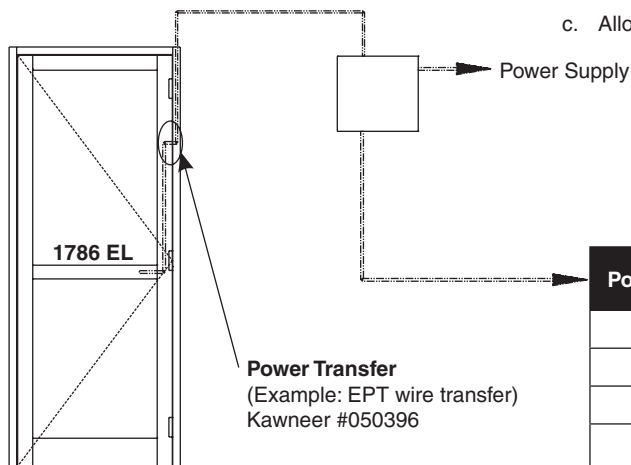
- a. All wiring to be coordinated with a licensed electrical installer.
- b. The PS1, PS5-4 or PS5-6 is the approved power supply for this exit device.
- c. Allows wire run from power supply to exit device of up to 700' with 18/2 wire.

ELECTRICAL SPECIFICATION

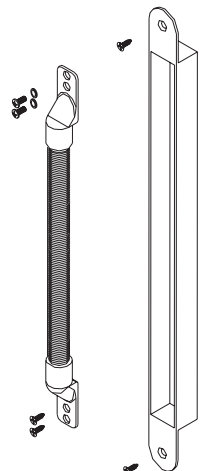
Voltage: 24 VDC

BASIC WIRING DIAGRAM**Note:**

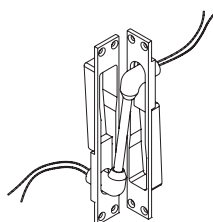
- All wiring to be coordinated with a licensed electrical installer.
- The PS1, PS5-4, and PS5-6 is the approved power supply for this exit device.
- Allows wire run from power supply to exit device of up to 700 feet with 18/2 wire.



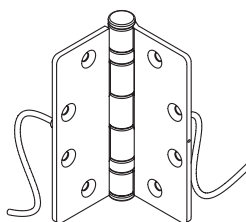
Power Supply	Kawneer Part Number	Exit Device Application
PS1	050409	2
PS5-4	050410	4
PS5-6	050411	6
Reference power supply specifications for additional features.		

POWER TRANSFERS

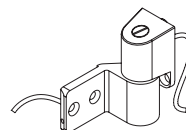
EPT
KAWNEER #050396



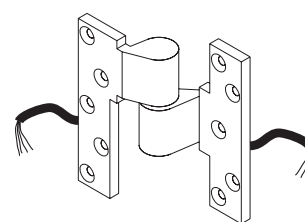
Von Duprin EPT
KAWNEER #050405
(Two 18 gauge wires)



EL BUTT HINGE
KAWNEER #037238
(Four 28 gauge wires)



**KAWNEER
EL OFFSET PIVOT**
KAWNEER #050392-RH
KAWNEER #050393-LH
(Four 28 gauge wires)

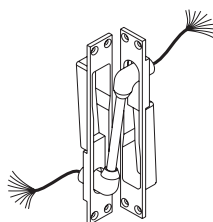


**OPTIONAL
EL OFFSET PIVOT**
KAWNEER #050397-RH
KAWNEER #050398-LH
(Four 28 gauge wires)

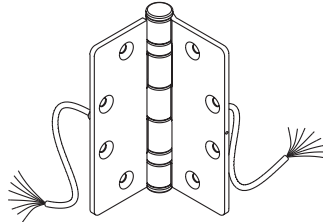
Note:
Do not disassemble hinge,
wire breakage will occur.

Note:
Do not disassemble hinge,
wire breakage will occur.

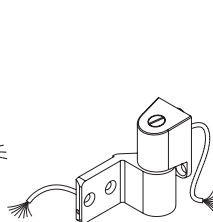
For use with device and auxiliary hardware. i.e. RX switch.



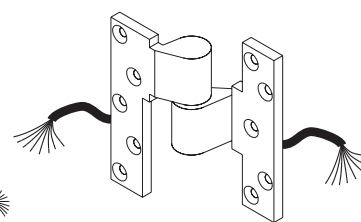
Von Duprin EPT
KAWNEER #050406
(Ten 24 gauge wires)



*** EL BUTT HINGE**
KAWNEER #037239
(Eight 28 gauge wires)



*** KAWNEER
EL OFFSET PIVOT**
KAWNEER #050394-RH
KAWNEER #050395-LH
(Eight 28 gauge wires)



*** OPTIONAL
EL OFFSET PIVOT**
KAWNEER #050388-RH
KAWNEER #050389-LH
(Eight 28 gauge wires)

*** Special order
consult factory.**

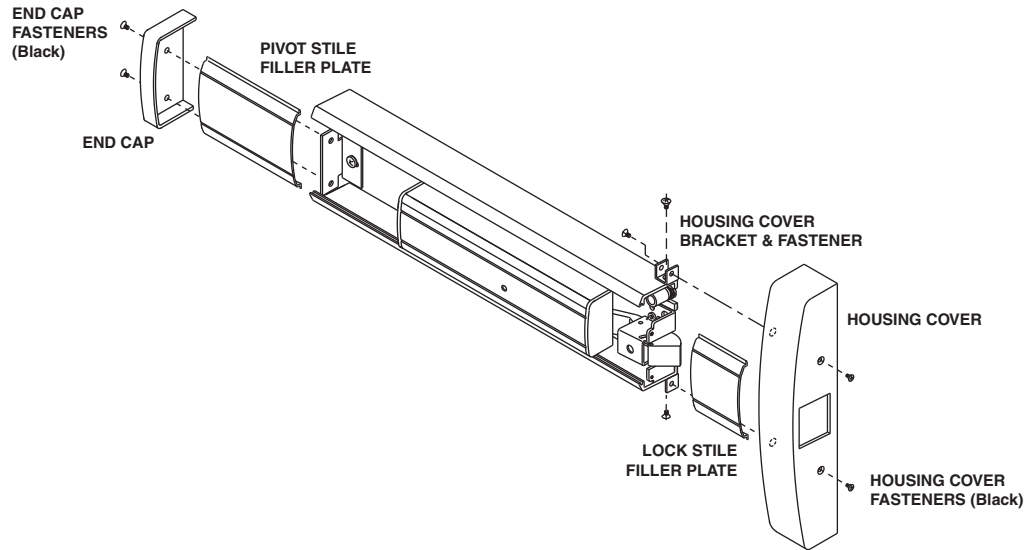
Note:
Do not disassemble hinge,
wire breakage will occur.

Note:
Do not disassemble hinge,
wire breakage will occur.

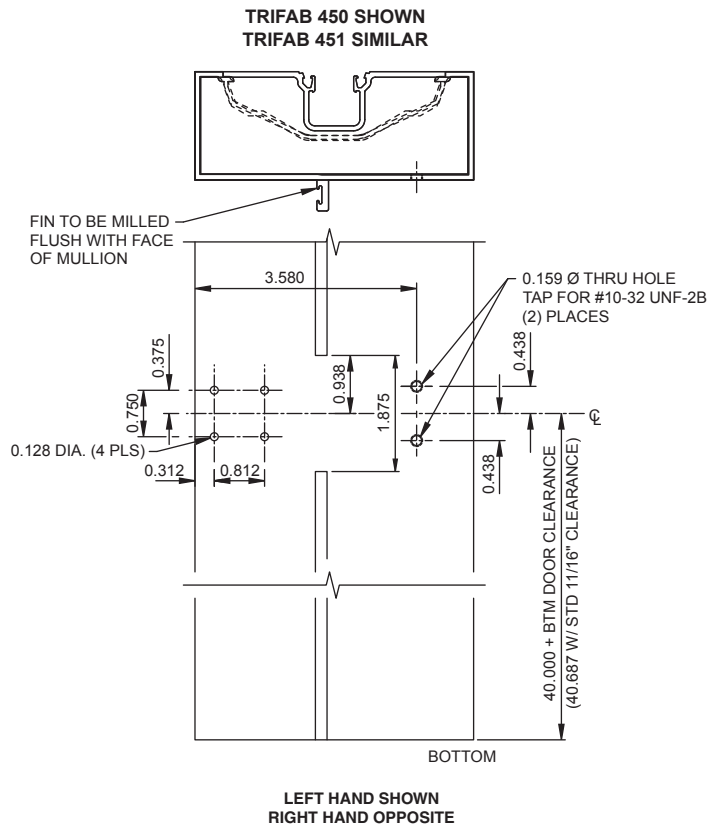
AVAILABLE WITH	EPT	KAWNEER EL BUTT HINGES	KAWNEER EL OFFSET PIVOT	OPTIONAL EL OFFSET PIVOT
190/350/500 STANDARD	X	X	X	X
HEAVY WALL	X	X		X
AA™ 250/AA™ 425	X	X	X	X

FINAL ASSEMBLY

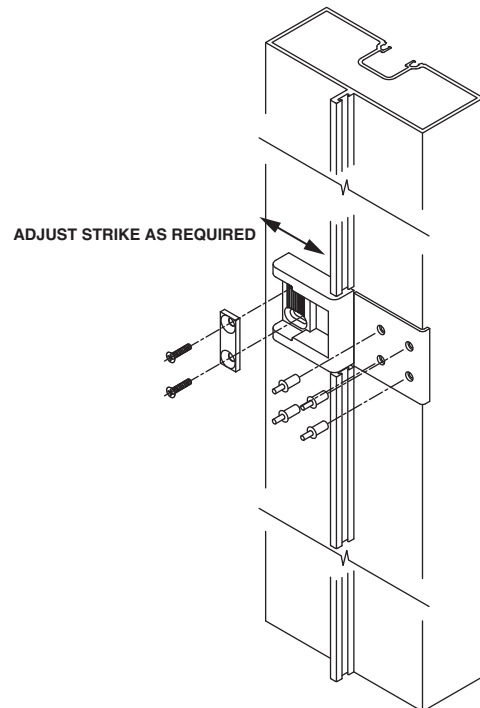
- 1) Slide pivot stile filler plate into device and attach pivot stile end cap with fasteners provided.
- 2) Slide lock stile filler plate into device.
- 3) Install housing cover brackets onto top and bottom of exit device with fasteners provided.
- 4) Install housing cover over brackets and attach with (Black) fasteners provided.

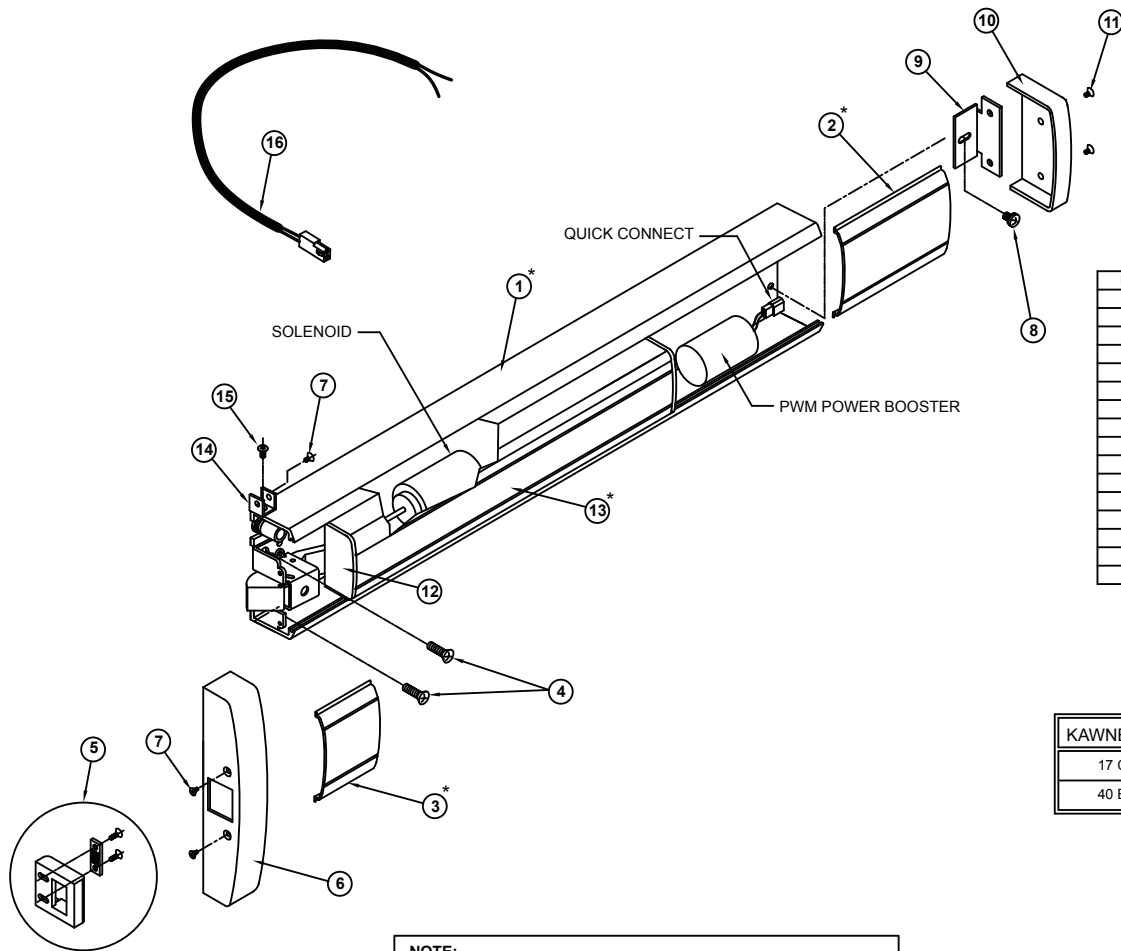
**STRIKE INSTALLATION AND ADJUSTMENT**

- 1) Prep door jamb for strike as shown below.



- 2) Attach strike to door jamb with fasteners provided.
- 3) Close door and adjust strike as required to hold door tight against weathering.
- 4) Attach stainless steel rub plate with (4) 1/8" drive rivets provided.





NOTE:
THE PS1 (050409), PS5-4 (050410) AND PS5-6 (050411) POWER SUPPLIES WILL BE USED EXCLUSIVELY WITH THE 1786 EXIT DEVICE ONLY. POWER SUPPLIES BY OTHERS WILL NOT BE PERMITTED AND ARE SUBJECT TO WARRANTY BEING VOID.

KAWNEER 1786 EL RIM EXIT DEVICE PARTS BREAKDOWN

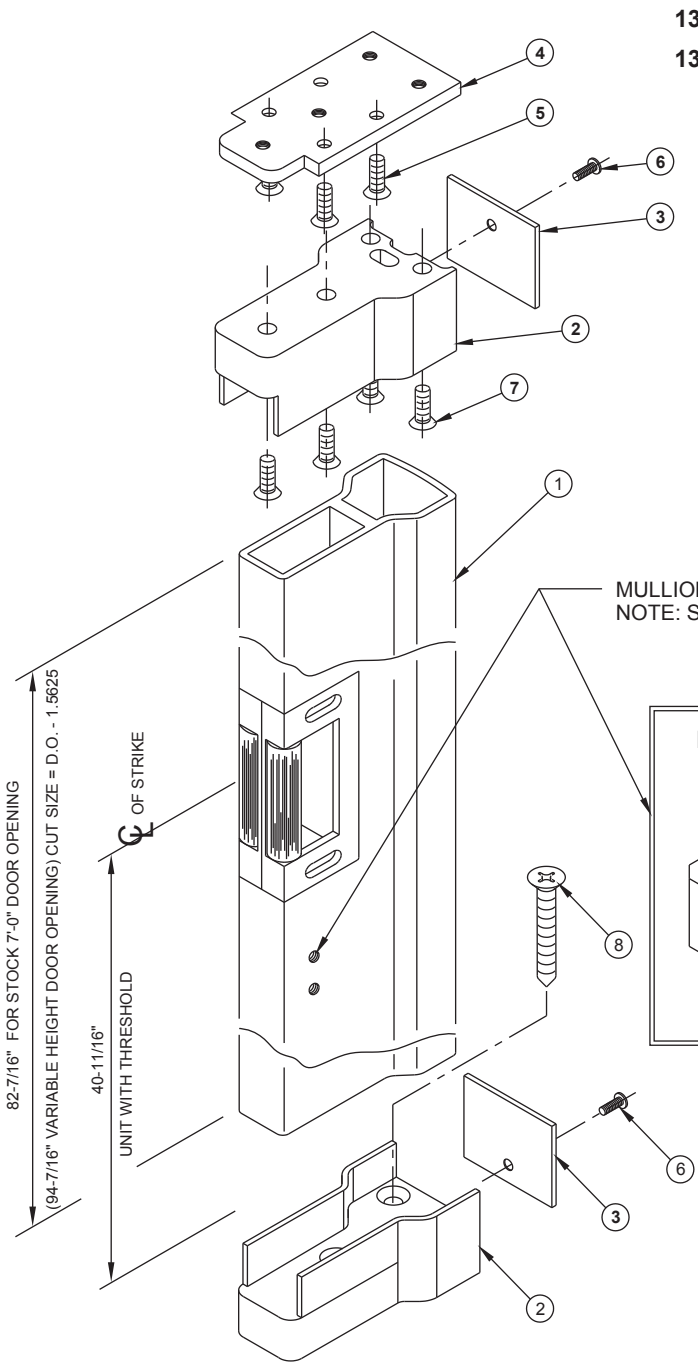
RIM EXIT DEVICE PACKAGE TO INCLUDE:

ITEM #	QTY	DESCRIPTION
1 *	1 EA.	EXIT DEVICE BASE ASSEMBLY (SIZED ACCORDING TO PART NUMBER)
2 *	1 EA.	HINGE/PIVOT FILLER PLATE (SIZED ACCORDING TO PART NUMBER)
3 *	1 EA.	LATCH FILLER PLATE
4	1 EA.	# 12-24 PANIC ATTACHMENT FASTENER
5	1 EA.	"S" STRIKE PACKAGE WITH FASTENERS AND LOCK BLOCK (133588)
6	1 EA.	METAL HOUSING COVER (BLACK MATT FINISH)
7	4 EA.	HOUSING COVER ATTACHMENT FASTENERS (BLACK)
8	1 EA.	HINGE/PIVOT STILE ATTACHMENT FASTENER
9	1 EA.	END CAP MOUNTING BRACKET
10	1 EA.	HINGE/PIVOT END CAP (BLACK MATT FINISH)
11	2 EA.	END CAP FASTENERS (BLACK)
12	2 EA.	PUSH PAD END CAPS (BLACK MATT FINISH)
13 *	1 EA.	PUSH PAD ASSEMBLY
14	2 EA.	HOUSING COVER BRACKET
15	2 EA.	HOUSING COVER BRACKET FASTENERS
16	1 EA.	48" QUICK CONNECT CABLE (SHIPPED LOOSE)

* INDICATES PART TO BE IN COLOR TO BLEND WITH THE DOOR FINISH

KAWNEER FINISH	MANUFACTURER FINISH
17 CLEAR	US28/628
40 BRONZE	DBZ 313

TOUCHBAR RIM EXIT DEVICE		
133580EL	3'-0"	NON HANDED
133581EL	3'-6"	NON HANDED
133582EL	4'-0"	NON HANDED



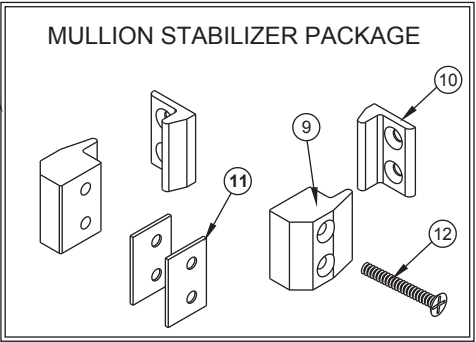
133586 STANDARD HEIGHT (7'0" DO or 82-7/16" PART)
133587 VARIABLE HEIGHT TO (8'0" DO or 94-7/16" PART)

REMOVABLE MULLION PACKAGE TO INCLUDE:

EXIT DEVICE		
ITEM #	QTY	DESCRIPTION
1*	1 EA.	VERTICAL MULLION (SIZED ACCORDING TO PART NUMBER)
2*	2 EA.	SHOE MULLION
3*	2 EA.	BACK PLATE FOR SHOE MULLION
4*	1 EA.	SHOE MULLION MOUNTING PLATE
5	4 EA.	#14 x 1-1/2" FHTF - FASTENERS FOR UPPER SHOE MOUNTING PLATE TO HEAD
6	2 EA.	1/4-20 x 7/8" OHMS - BACK PLATE ATTACHMENT FASTENERS
7	4 EA.	1/4-20 x 3/4" FHMS - FASTENERS FOR UPPER SHOE TO PLATE
8	4 EA.	1/4-20 x 1-1/8" FHMS W/ANCHORS - FASTENERS FOR LOWER SHOE TO FLOOR
9	2 EA.	MULLION STABILIZERS
10	2 EA.	DOOR STABILIZERS
11	4 EA.	STABILIZER SHIMS
12	8 EA.	#10-24 x 7/8" OHMS - FASTENERS FOR MULLION STABILIZERS

* INDICATES PART TO BE IN COLOR TO BLEND WITH THE DOOR FINISH

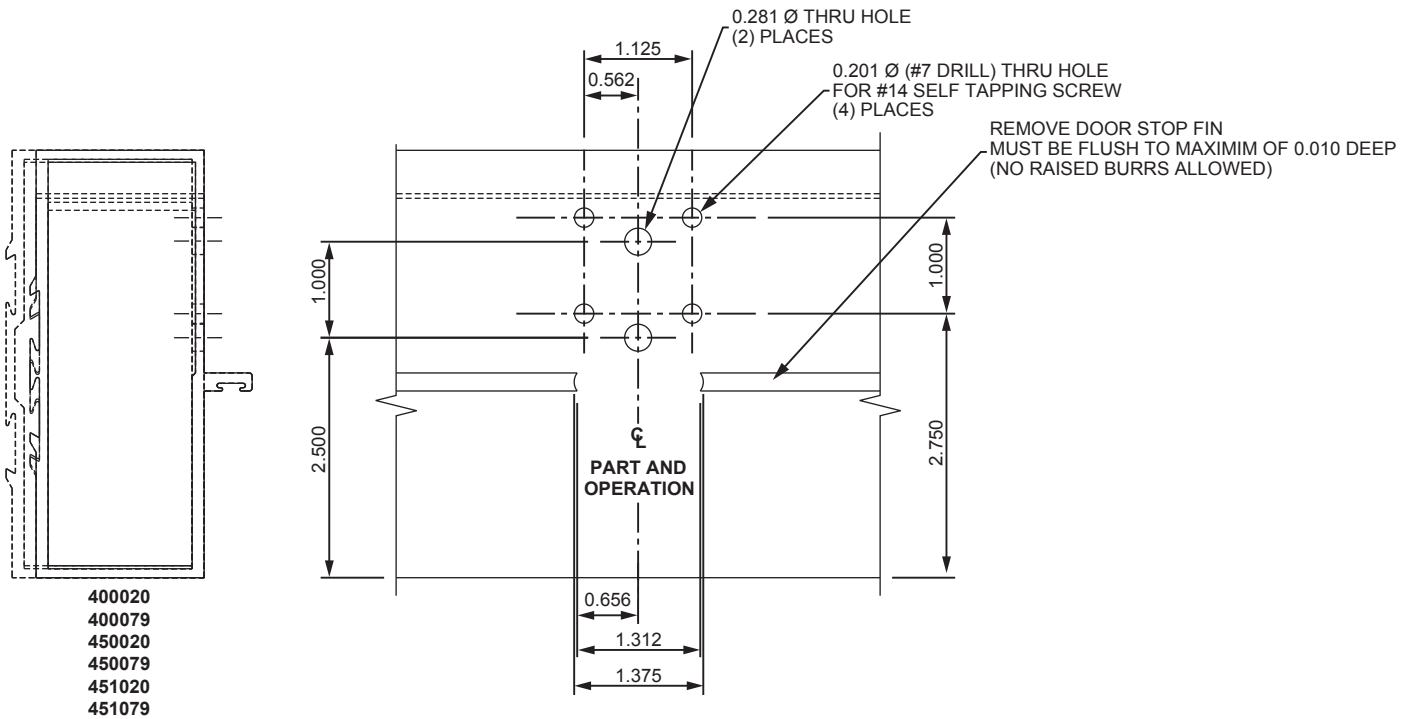
MULLION STABILIZER PREP
NOTE: STABILIZERS SHIPPED WITH MULLION



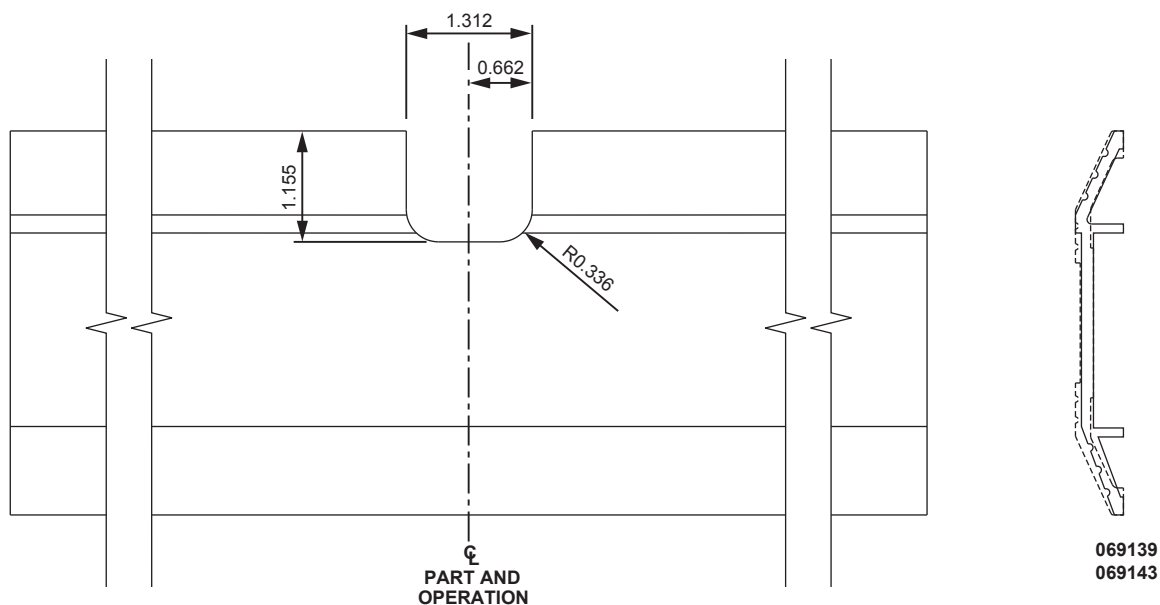
KAWNEER FINISH	MANUFACTURER FINISH
17 CLEAR	US28/628
40 BRONZE	DBZ 313

REMOVABLE MULLION HEADER/T-BAR PREP

- 1) Prep Header/T-Bar as shown below.

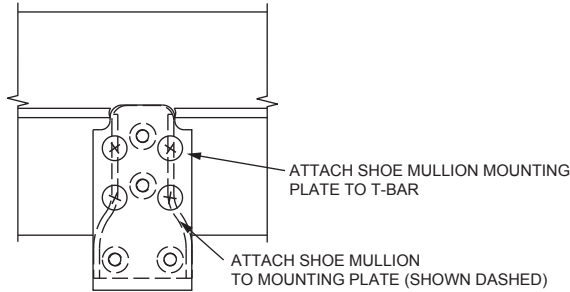
**REMOVABLE MULLION THRESHOLD PREP**

- 1) Field notch threshold as shown below.

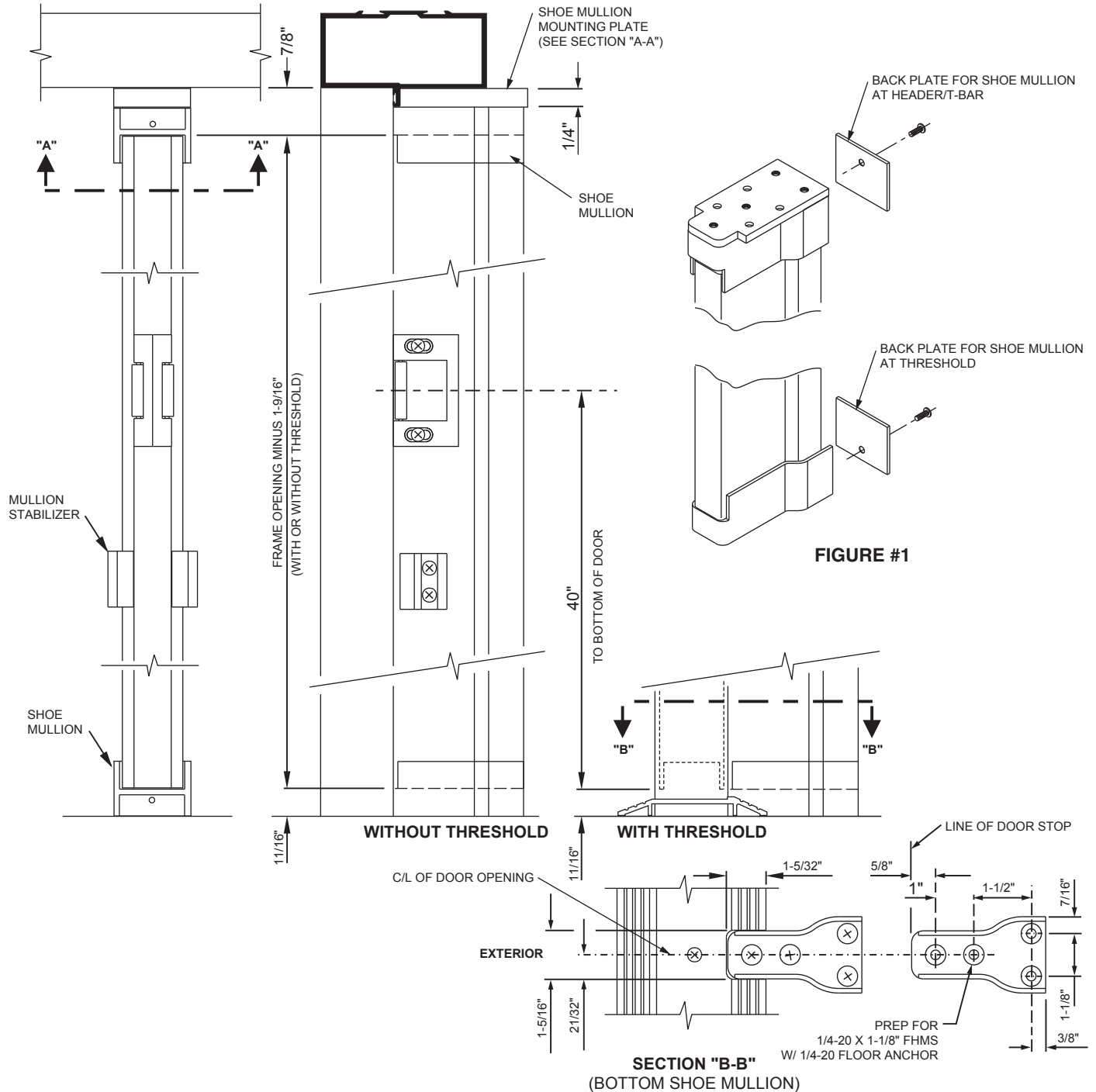


Laws and building and safety codes governing the design and use of glazed entrance, window, and curtain wall products vary widely. Kawneer does not control the selection of product configurations, operating hardware, or glazing materials, and assumes no responsibility therefor.

Kawneer reserves the right to change configuration without prior notice when deemed necessary for product improvement.
© Kawneer Company, Inc., 2014



SECTION "A-A"
(TOP SHOE MULLION)

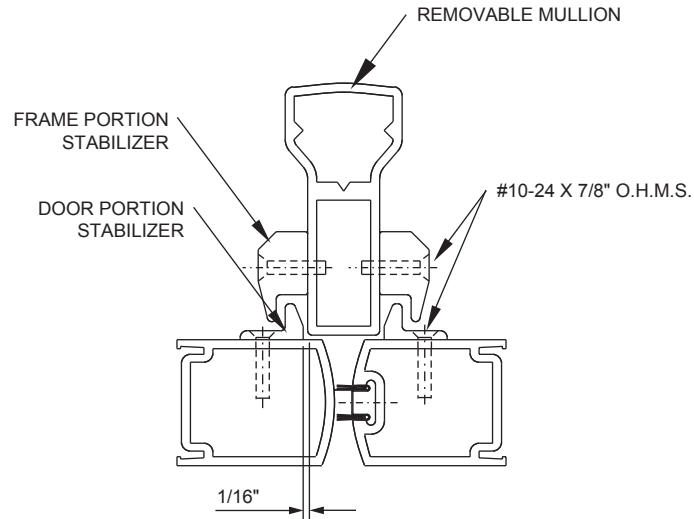


REMOVABLE MULLION INSTALLATION

- 1) Attach shoe mullion mounting plate to header/t-bar as shown.
- 2) Attach top shoe mullion to mounting plate on header/t-bar as shown.
- 3) Secure bottom shoe mullion to floor as shown.
- 4) Check removable mullion for correct length from bottom of mullion to centerline of strike.
 - a) Cut mullion to proper overall length if required.
- 5) Slip removable mullion into top shoe mullion, pick up and swing onto bottom shoe mullion.
- 6) Install back plate onto shoe mullion at header/t-bar and threshold. (See Figure #1)


MULLION STABILIZER INSTALLATION

- 1) Attach frame portion stabilizers in holes provided on mullion with 2 ea. #10-24 x 7/8" O.H.M.S.
- 2) Close door and align door portion on the door, allowing 1/16" for clearance, as shown.
- 3) Mark hole centers, drill and tap for #10-24 in door.
- 4) Attach door portion stabilizers to door with 2 ea. #10-24 x 7/8" O.H.M.S.



Laws and building and safety codes governing the design and use of glazed entrance, window, and curtain wall products vary widely. Kawneer does not control the selection of product configurations, operating hardware, or glazing materials, and assumes no responsibility therefor.

Kawneer reserves the right to change configuration without prior notice when deemed necessary for product improvement.
© Kawneer Company, Inc., 2014

Symptom	Cause	Solution
Intermittent EL device operation	Wrong power supply is used.	PS1, PS5-4 or PS5-6 are the only approved power supplies.
	Too many EL devices are run on a power supply.	PS1 - runs 2 devices.
		PS5-4 - runs 4 devices.
		PS5-6 - runs 6 devices.
	Wire size too small.	Correct wire gauge is minimum of 18/2.
	Wire run too long.	Allowable wire run from power supply to exit device is 700 feet.
	Wire run from power supply to devices has been split.	No splitting is allowed.
	Output power is not run directly to exit device.	PS1 has 1 output which accommodate 2 wires for 2 devices (one wire per device). PS5-4 has 4 outputs which accommodate 1 wire per output for each device (up to 4 devices). PS5-6 has 6 outputs which accommodate 1 wire per output for each device (up to 6 devices).
	Poor power transfer connection.	Inspect power transfer connection for any broken wires.
Latch not releasing upon electrical activation - Binding	(4) or (2) Wire EL hinging or power transfer used with auxiliary hardware. (i.e. single/double RX switch.)	(8) or (10) Wire EL hinging or power transfer options must be used to guarantee a suitable electrical application. Exit device will require (4) wires to achieve proper performance.
	Wiring not coordinated with licensed electrical installer.	EL wiring should always be coordinated with licensed electrical installer.
	Door is not installed plumb within framing system.	Adjust door to eliminate bind.
	Hold open time on access control is not set correctly.	Check hold open time on access control.
	PWM300 module is not set correctly.	PWM300 module should be set at 1 for the 1786 exit device. This switch should be factory set by Command Access.
	Power supply voltage not set to full power.	Check output voltage adjustment in our power supplies. Increasing the voltage to full power will resolve most issues when pair of doors are activated at the same time.
		- To adjust output voltage, locate adjustment dial shown. - Turn adjustment dial clockwise to increase output voltage. 
	Excessive stack pressure.	Contact building owner to have HVAC system adjusted.

If the above troubleshooting questions did not resolve all issues. Please call Command Access at 888-622-2377 for technical assistance. Contact information is located within the PS1, PS5-4 or PS6-5 power supply.

Laws and building and safety codes governing the design and use of glazed entrance, window, and curtain wall products vary widely. Kawneer does not control the selection of product configurations, operating hardware, or glazing materials, and assumes no responsibility therefor.

Kawneer reserves the right to change configuration without prior notice when deemed necessary for product improvement.
© Kawneer Company, Inc., 2014