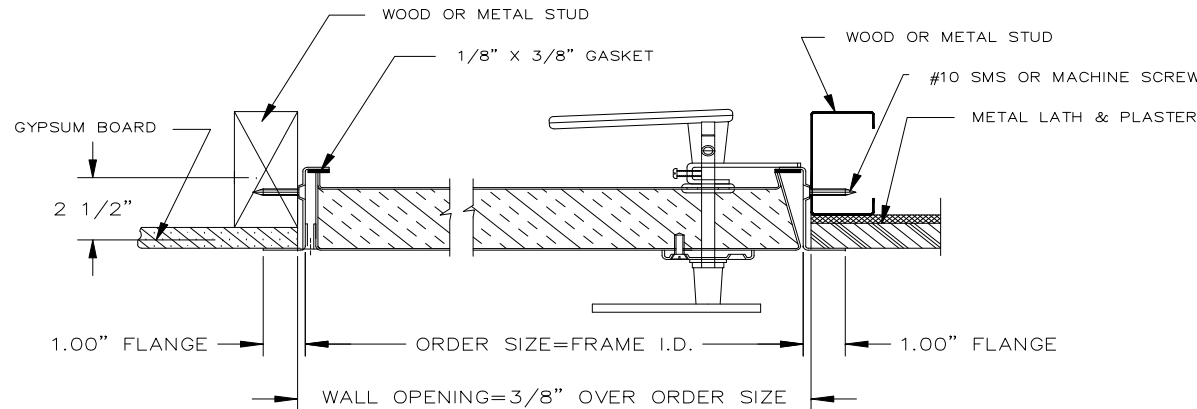


GYPSUM BOARD OR PLASTER WALLS

1. With metal or wood studing, install a framed opening at specified location. Opening dimensions should be $\frac{3}{8}$ " larger than the frame I.D. of the panel; i.e., for a 12" x 12" panel, opening should be 12- $\frac{3}{8}$ " x 12- $\frac{3}{8}$ ".
2. Frame all four sides of the access panel.
3. On panels larger than 16" x 16", install a double stud on both sides in the same manner as at passage panels.
4. Place panel in position in opening and mark location of attachment on studing using holes in all four sides of panel frame as marking guide.
5. Remove panel and drill $\frac{5}{32}$ " holes through studs at marked points. Four attachment holes for panels 32" x 32" and smaller; six attachment holes for larger panels.
6. Place panel in position and attach with #10 sheet metal or machine screws.
7. Check panel for freedom of movement. If it binds, shim as necessary to remove any racking of frame at attachment to studing.
8. Use proper sealant around the screws and behind the flange to provide adequate closure between wall and panel.

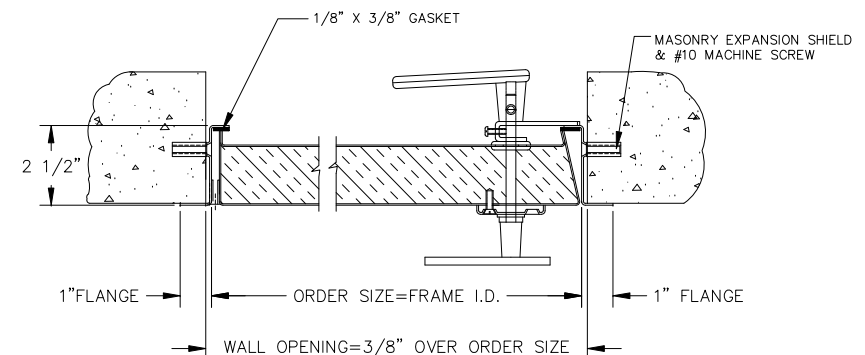


XPA/XPS on Wallboard

XPA-PWE/XPS-PWE on Metal Lath & Plaster or Stucco

MASONRY WALLS

1. Opening should be planned to dimensions $\frac{3}{8}$ " larger than door size of panel; i.e., for a 12" x 12" panel, opening should be 12- $\frac{3}{8}$ " x 12- $\frac{3}{8}$ ".
2. Position the panel in the wall opening provided for it and mark location of attachments on wall using holes in latch and hinge sides of panel frame as marking guides.
3. Remove panel and install expansion shields in wall at marked points. Install four for panels 32" x 32" or smaller, six for larger panels.
4. Place panel in position and attach with #10-32 x 1" long flat head steel machine screws or equivalent.
5. Check panel for freedom of movement. If it binds, shim as necessary to remove any racking of frame at attachments to masonry.
6. Use mortar between frame of panel and block wall to provide a complete closure around frame of panel. Use adequate sealant around the screws.



JL INDUSTRIES

ACTIVAR
INC.

Construction Products Group

www.activarcpg.com

XPA/XPS & XPA-PWE/XPS-PWE EXTERIOR ACCESS DOORS WALL INSTALLATION INSTRUCTIONS

HEADQUARTERS - JL INDUSTRIES :4450 WEST 78TH ST CIRCLE, BLOOMINGTON, MN 55435-5416 PH: 800-554-6077 FAX: 952-835-2218 EMAIL: INFO@JLINDUSTRIES.COM WWW.ACTIVARCPG.COM
ACPG WEST COAST -SAMSON PRODUCTS: COMMERCE, CA PH: 323-726-9070 FAX: 323-726-9068 • ACPG SOUTHEAST -THOMAS ENTERPRISES: FT MEYERS 11/24/10