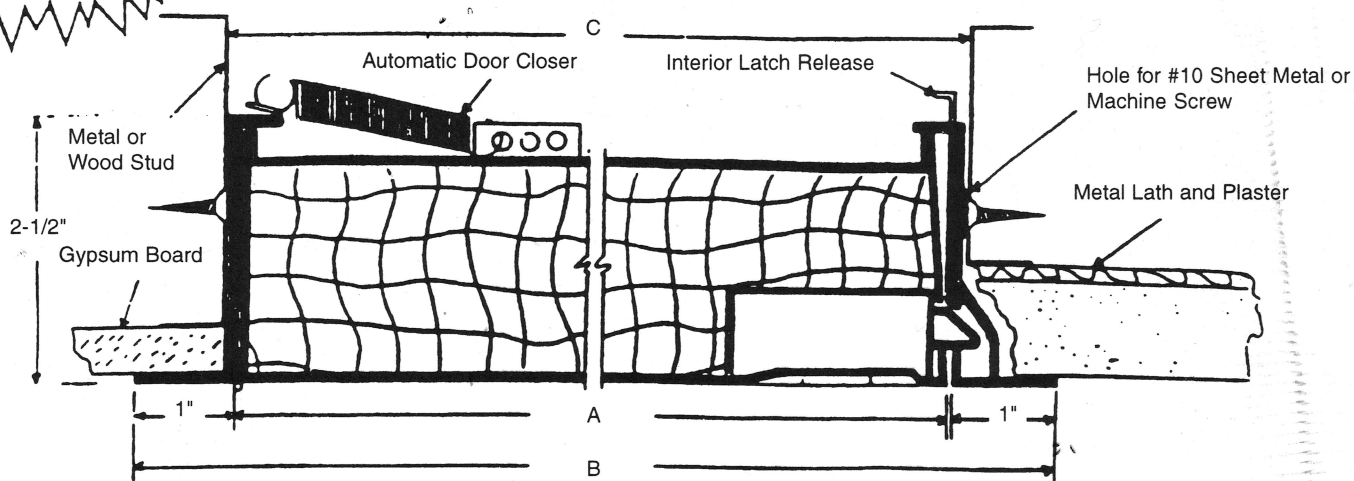


New Dual Locks have Turn Ring, installed and optional key taped to the back of door. Unscrew, turn ring and insert key for Dual Lock option.

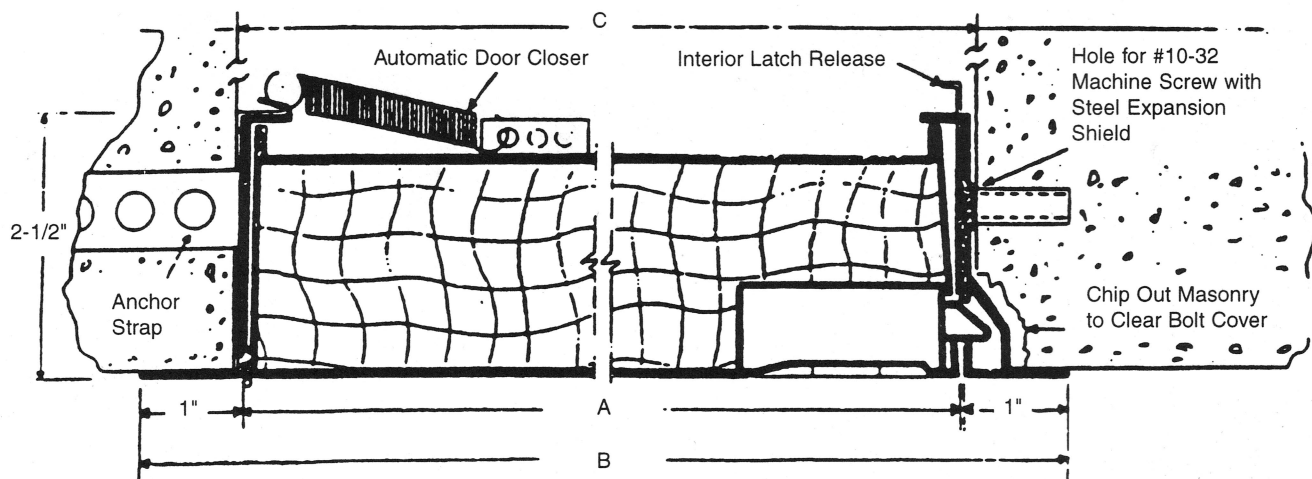
FIRE RATED ACCESS DOORS

FIRE RATED ACCESS PANEL WALL INSTALLATION INSTRUCTIONS



GYPSUM BOARD OR PLASTER WALLS

1. With metal or wood studding, install a framed opening at specified location. Open dimensions should be 3/8" larger than door size of panel; i.e., for a 12" x 12" panel, opening should be 12-3/8" x 12-3/8".
2. Frame above and below access panel.
3. On panels larger than 16" x 16", install a double stud on both sides in the same manner as at passage panels.
4. Place panel in position in opening and mark location of attachments on studding using holes in latch and hinge sides of panel frame as marking guide.
5. Remove panel and drill 5/32" holes through studs at marked points. Four attachment holes for panels 32" x 32" and smaller; six attachment holes for larger panels.
6. Place panel in position (leaving masonry anchors flat against panel frame) and attach with #10 sheet metal or machine screws.
7. Check panel for freedom of movement. If it binds, shim as necessary to remove any racking of frame at attachments to studding.



MASONRY WALLS

1. Opening should be planed to dimensions 3/8" larger than door size of panel; i.e., for a 12" x 12" panel, opening should be 12-3/8" x 12-3/8". (A notched-out area 2-1/4" long x 7/8" wide and 1/2" deep is required for the lock bolt cover.)
2. If wall in under construction at time panel is being installed, masonry anchors (unfolded from frame) will serve for attachment.
3. If wall is already in place, position panel in opening provided for it and mark location of attachments on wall using holes in latch and hinge sides of panel frame as marking guides.
4. Remove panel and install expansion shields in wall at marked points. Four for panels 32" x 32" or smaller, six for larger panels.
5. Place panel in position (leaving masonry anchors flat against frame) and attach with #10-32 x 1" long flat head steel machine screws or equivalent.
6. Check panel for freedom of movement. If it binds, shim as necessary to remove any racking of frame at attachments to masonry.
7. Use mortar between frame of panel and block wall to provide a complete closure around frame of panel.

1. With metal studding, install a framed opening at specified location of panel. Note: (A notched-out area 2-1/4" long x 7/8" wide and 1/2" deep is required for the lock bolt cover.)

1 Hour Installation: Opening dimension (C) should be 3/8" larger than door size of panel: i.e. 16-3/8" x 16-3/8"

3 Hour Installation: Opening dimensions (D) should be 1-5/8" larger than door size of panel; i.e., for a 16" x 16" panel, opening should be 17-5/8" x 17-5/8". The interior of opening should be lined with 5/8" type "X" gypsum board using screws spaced 18" o.c. maximum to the 1-5/8" track. Minimum of two (2) screws per side.

2. Place panel in position in opening and mark location of attaching screws on studding, using holes in latch and hinge sides of panel frame as marking guides. 2 holes are provided on each side.

3. Remove panel and drill 5/32" holes through studding at points marked for attachment holes.

4. Before installing panel, bend "latch release" bracket inward causing panel to stay in "up" position.

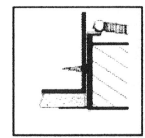
5. Place panel in position (leaving masonry anchor straps flat against panel frame) and attach with #10 drywall screws.

6. Check panel for freedom of movement. If binding occurs, shim as necessary to prevent racking of frame.

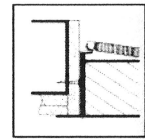
7. Attach 1 spring to tabs on hinge side of panel, through hole in door, and when required attach the 2nd spring to the framing above the panel. Spring can be supported with 12 gauge wire ties or metal strapping attached from framing screw to wood studs of flooring above. In order to insure that panel is self-closing, it must be released from at least 60 degrees from horizontal

IMPORTANT: Panel sizes 16" x 16" and larger are supplied with an extra spring. It is the responsibility of the installer to attach these springs from the spring base on back of panel to framing of floor above to insure that door is self-closing. (Additional springs may be required for large doors)

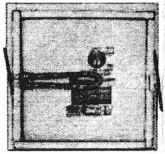
Masonry Ceilings: See additional Instructions on Website



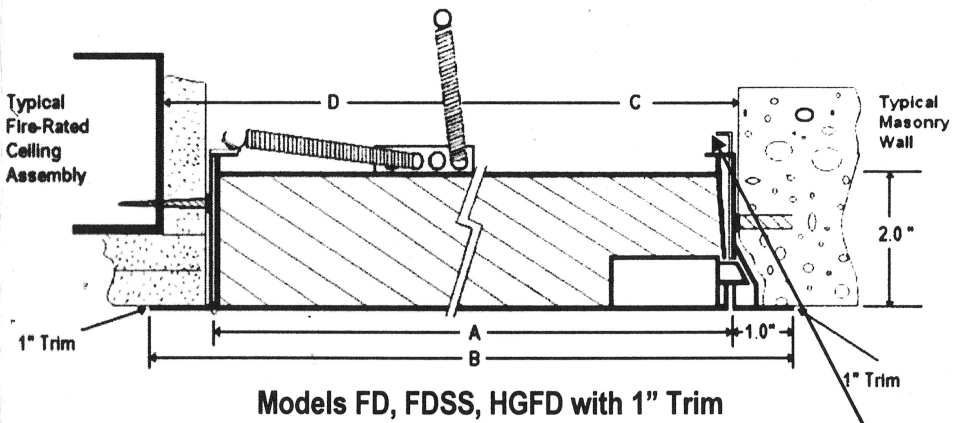
1 Hour



3 Hour

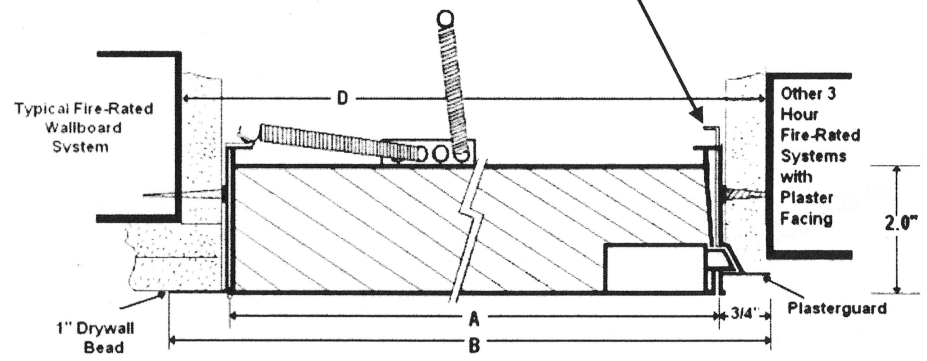


Assembled Spring Assisted Closing




NOTE: ALL FIRE-RATED ACCESS PANELS HAVE SPRING-ASSISTED CLOSING.

Latch release is to be bent inward, so that panel remains in "Up" position.



Models FDWB (drywall bead) and FDPW (plasterguard)

THIS PRODUCT NOT CLASSIFIED BY UNDERWRITER'S LABORATORIES FOR THIS APPLICATION




ACTIVAR
INC.
Construction Products Group

www.activarcp.com

Listing: Warnock Hersey listed for ceiling installations with 3 hour non-combustible rating or 1 hour combustible rating up to 24" x 36".

Due to the wide variety of fire-rated wall assemblies, these drawings are representative of a typical installation scenario, but are not meant to be a guideline for wall construction. Please consult your local AHJ for current



HEADQUARTERS & CUSTOMER SERVICE: 4450 WEST 78TH ST CIRCLE, BLOOMINGTON, MN 55435-5416 PH: 800-554-6077 FAX: 952-835-2218 EMAIL: SALES@JLINDUSTRIES.COM WWW.ACTIVARCPG.COM

ACPG SOUTHEAST (THOMAS ENTERPRISES): FT MYERS, FL ACPG WEST COAST (SAMSON): COMMERCE, CA WAREHOUSES: DALLAS TX, LANCASTER PA, ATLANTA GA, CHICAGO, IL, SEATTLE WA 4-25-11