

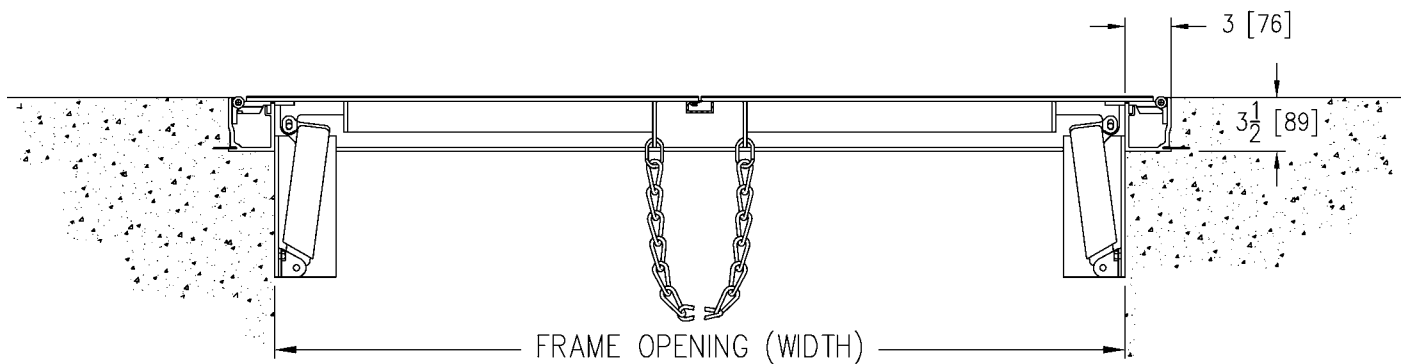
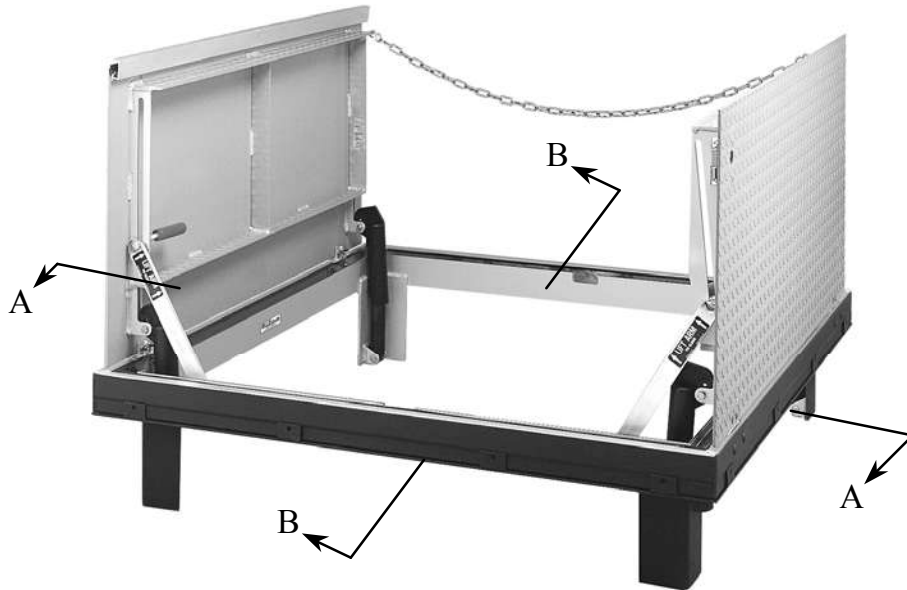


MODEL

JD-AL

TECHNICAL DATA SHEET

INSTALLATION OF JD-AL DOOR FOR TYPICAL CONDITIONS



SECTION A-A



SECTION B-B

PROPRIETARY
Bilco information for Authorized Personnel
Only. Not to be Reproduced.

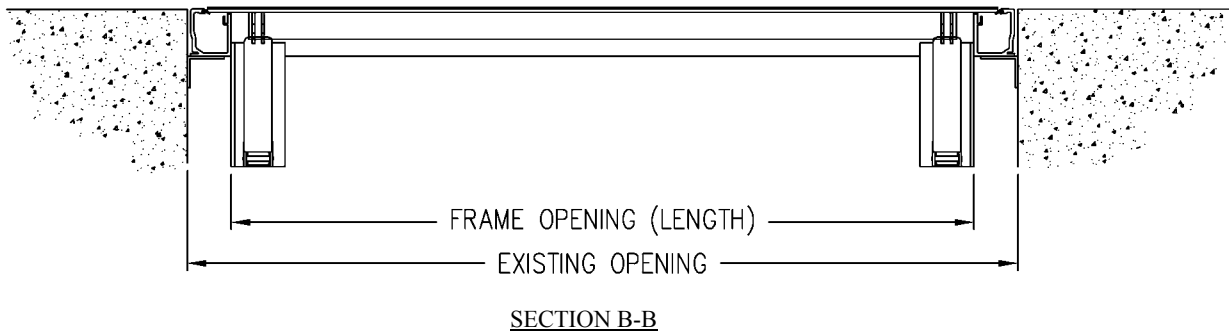
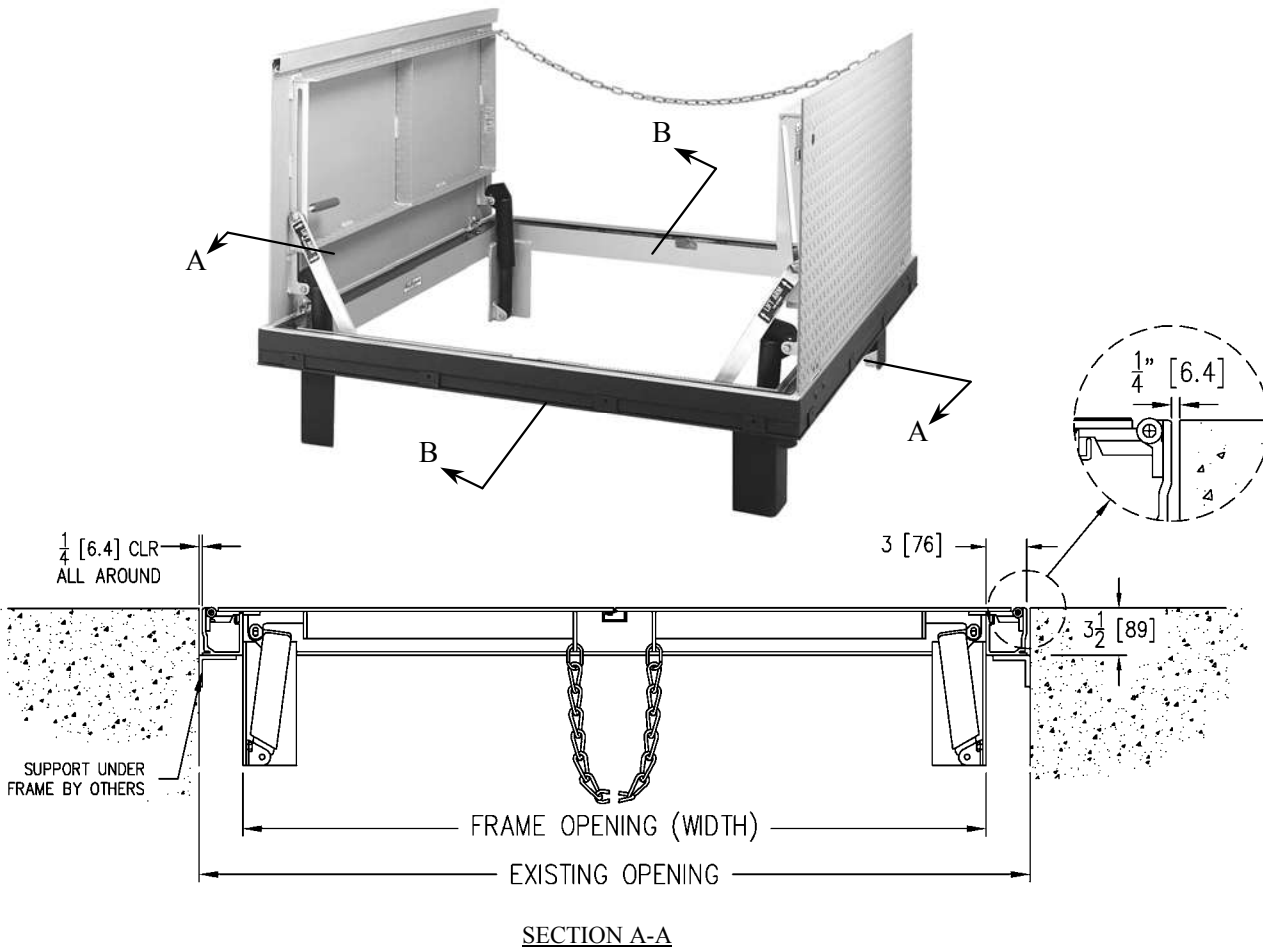


MODEL

JD-AL

TECHNICAL DATA SHEET

INSTALLATION OF JD-AL DOOR FOR AN EXISTING OPENING



NOTE: 1/4" CLEARANCE NEEDED ALL AROUND UNIT

PROPRIETARY

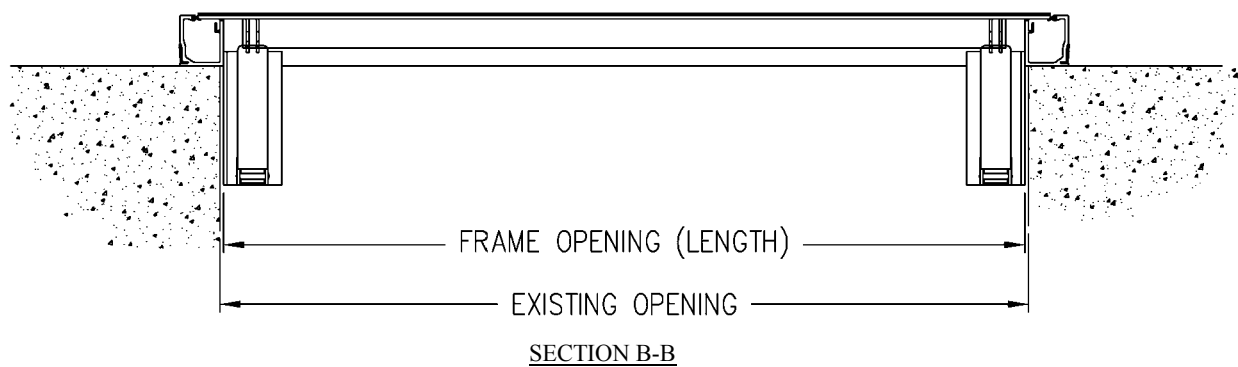
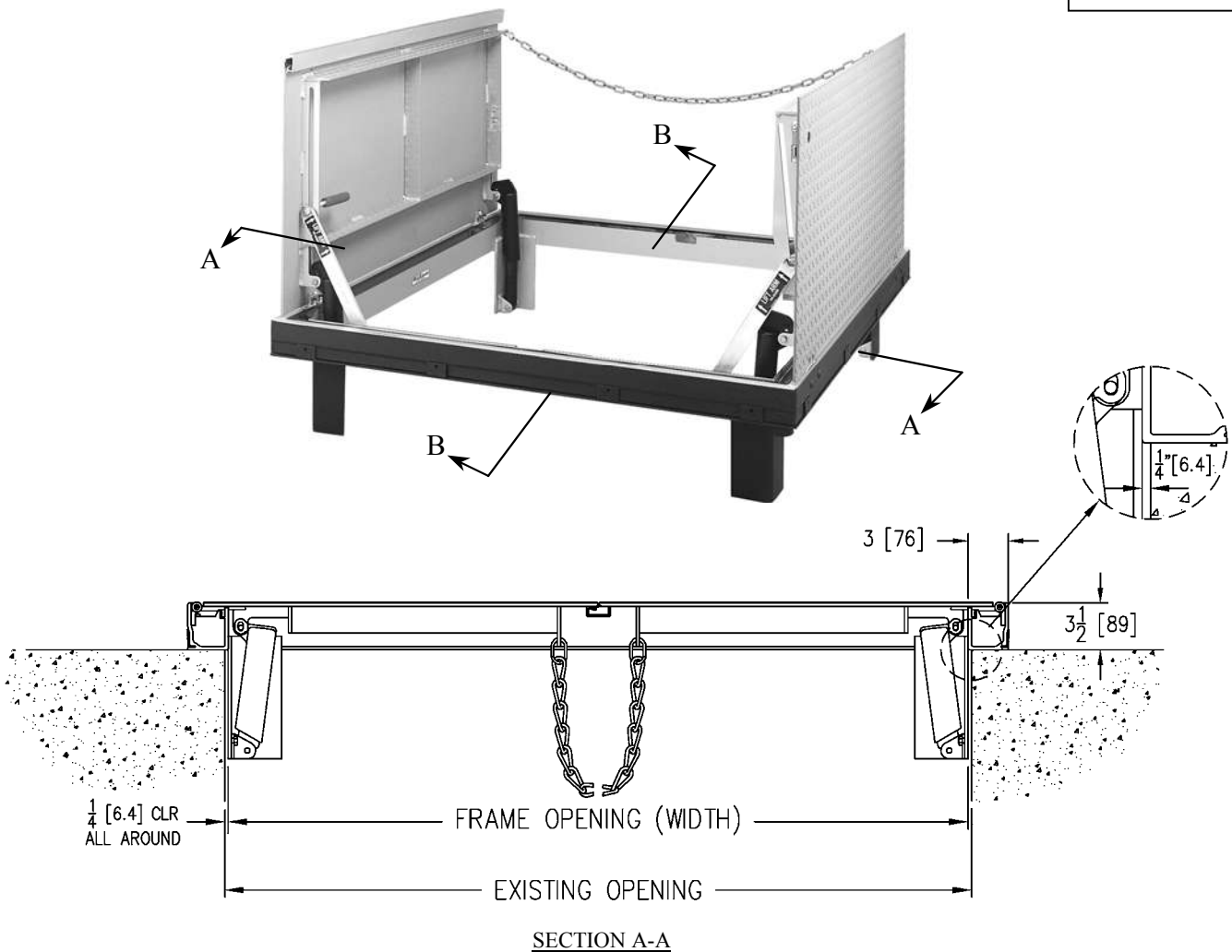
Bilco information for Authorized Personnel
Only. Not to be Reproduced.



MODEL

JD-AL

TECHNICAL DATA SHEET
INSTALLATION OF JD-AL DOOR TO SIT ON TOP OF
EXISTING OPENING



NOTE: 1/4" CLEARANCE NEEDED ALL AROUND UNIT

PROPRIETARY

Bilco information for Authorized Personnel
Only. Not to be Reproduced.