



INST.COR

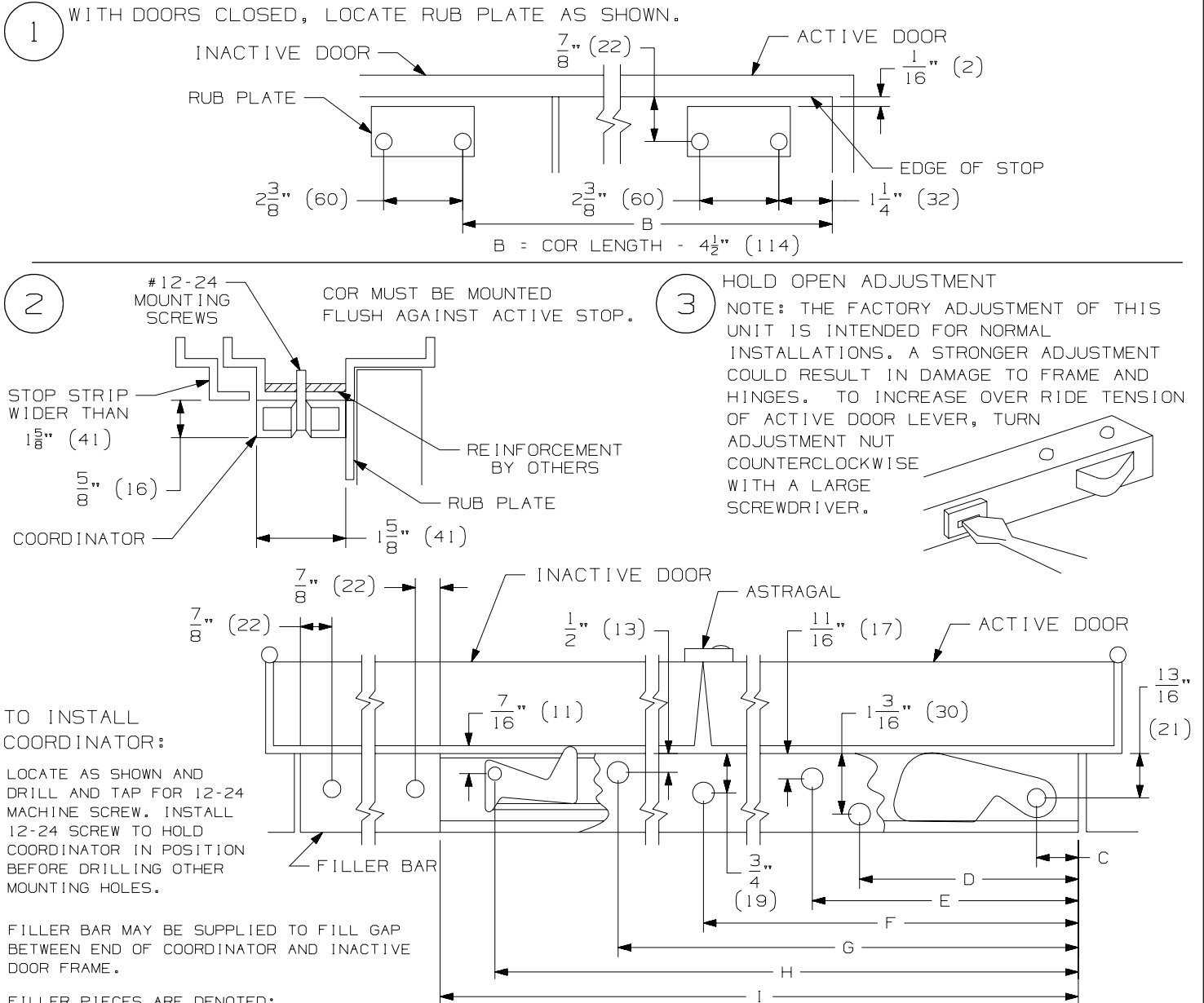
COR32, COR42, COR52, COR60 & COR72

IVES

Coordinator with CB1 Carry Bar,
MB1 & MB2 Mounting Brackets

Installation Instructions

NOTE: INSTALL COORDINATOR BEFORE ANY OTHER HARDWARE EXCEPT HINGES AND DOORS. FRAMES MUST BE ADEQUATELY REINFORCED.



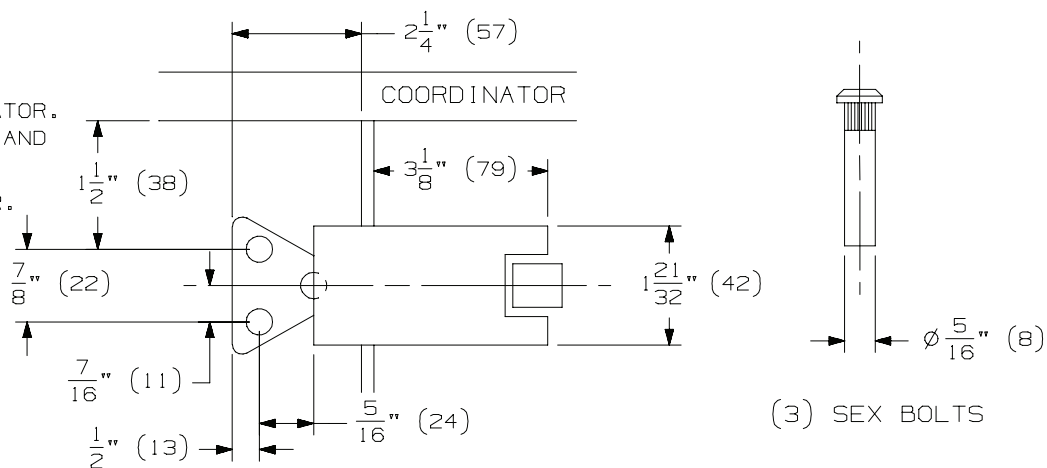
LENGTH OF CHANNEL (I)	DIMENSIONS					
	C	D	E	F	G	H
32"	$\frac{7}{8}$ " (22)	$4\frac{7}{8}$ " (124)	$11\frac{13}{32}$ " (290)	OMIT	28" (791)	$31\frac{1}{8}$ " (791)
42"	$\frac{7}{8}$ " (22)	$4\frac{7}{8}$ " (124)	$11\frac{13}{32}$ " (290)	$27\frac{5}{8}$ " (702)	38" (965)	$41\frac{1}{8}$ " (1044)
52"	$\frac{7}{8}$ " (22)	$4\frac{7}{8}$ " (124)	$11\frac{13}{32}$ " (290)	$27\frac{5}{8}$ " (702)	48" (1219)	$51\frac{1}{8}$ " (1299)
60"	$\frac{7}{8}$ " (22)	$4\frac{7}{8}$ " (124)	$11\frac{13}{32}$ " (290)	$27\frac{5}{8}$ " (702)	56" (1422)	$59\frac{1}{8}$ " (1502)
72"	$\frac{7}{8}$ " (22)	$4\frac{7}{8}$ " (124)	$11\frac{13}{32}$ " (290)	$27\frac{5}{8}$ " (702)	68" (1727)	$71\frac{1}{8}$ " (1807)

NOTE: DIMENSIONS IN () ARE MILLIMETERS.

4

CB1

CB1 CARRY BAR MAY BE SUPPLIED WITH COORDINATOR. LOCATE HOLES AS SHOWN AND DRILL $\phi \frac{5}{16}$ " FOR SEX BOLTS ON INACTIVE DOOR.

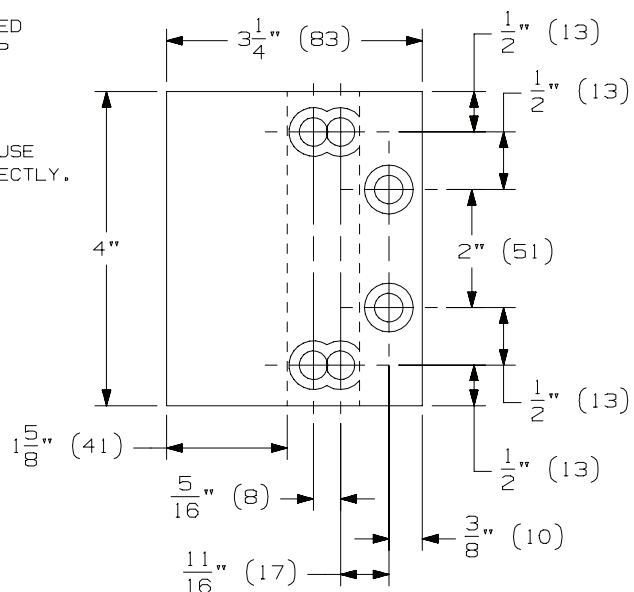
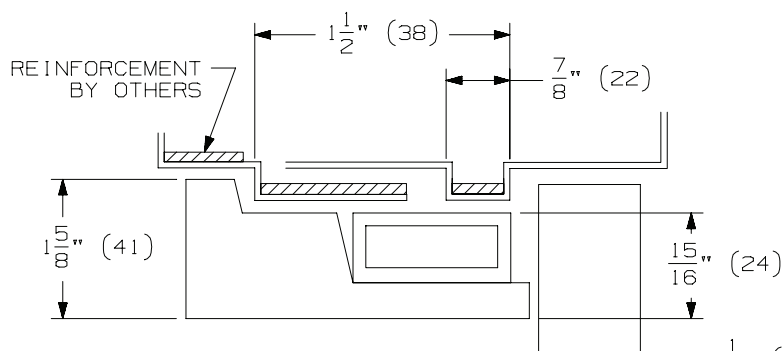


5

MOUNTING BRACKETS FOR STOP APPLIED HARDWARE MAY BE SUPPLIED WITH COORDINATOR. BRACKETS MUST BE FIELD PREPARED FOR STOP APPLIED HARDWARE. LOWER MOUNTING HOLES FOR DOOR APPLIED HARDWARE $\frac{15}{16}$ " TO CLEAR COORDINATOR AND MOUNTING BRACKET.

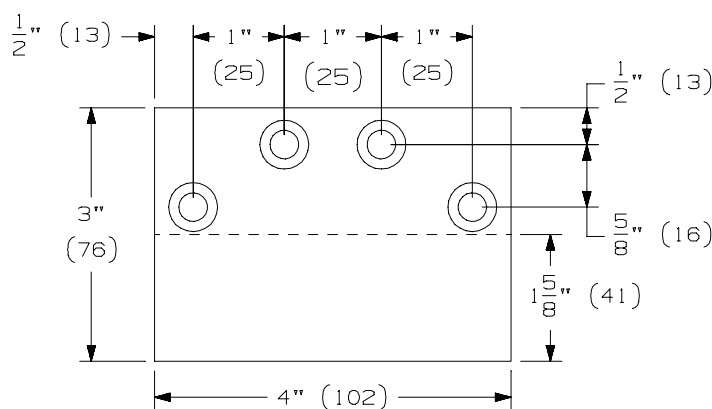
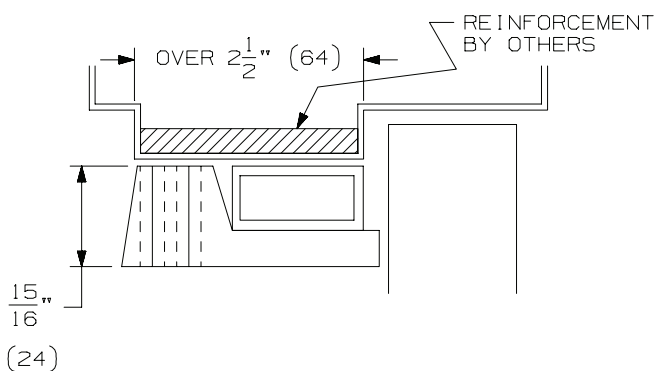
NOTE: DO NOT DRILL HOLES IN THE COORDINATOR. THIS WILL CAUSE DAMAGE TO THE UNIT AND THE COORDINATOR WILL FUNCTION CORRECTLY.

MB2 MOUNTING BRACKET FOR STRIP WIDTH UP TO $2\frac{1}{2}$ "



MB1 MOUNTING BRACKET

FOR STOP STRIP WIDTHS OVER $2\frac{1}{2}$ " (64)



	QTY	SCREW DETAILS
COORDINATOR	6	12-24 X $1\frac{1}{4}$ " TRPHMS
FILLER BAR	2	BUSHINGS
	2	12-24 X $1\frac{1}{4}$ " TRPHMS
RUB PLATE	4	8 X $\frac{3}{4}$ " FPHSMS
CARRY BAR	3	12-24 X $1\frac{1}{4}$ " TRPHMS
	3	$\phi \frac{5}{16}$ " SEX BOLT
MB1 OR MB2	4	12-24 X $1\frac{1}{4}$ " TRPHMS

NOTE: FOR MB1F, MB2F, MB3F, MB1V, MB2V OR MB3V, SEE SEPARATE INSTRUCTIONS.

NOTE: DIMENSIONS IN () ARE MILLIMETERS.

Customer Service

1-877-671-7011

www.allegion.com



© Allegion 2014
Printed in U.S.A.
INST.COR Rev. 01/14-b