

# Door Lockset Installation Instructions - 2 Sided

**! WARNING: ALWAYS** read & follow the operating & safety instructions in the power tool owner's manual & the instructions for use of this accessory. **ALWAYS** wear safety goggles & other appropriate safety items for protection.

**Check your lockset prior to using this jig.** This installation jig is for most common locksets that specify a 2-3/8" or a 2-3/4" backset (the distance between the door edge and the center of the handle). Check the manufacturers instructions included with your lockset for applicable backset for your specific lockset.

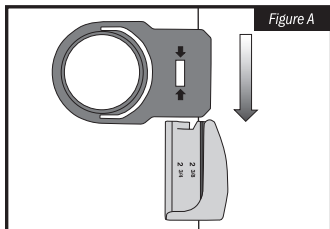
**Do not use this jig for any locksets that specify a backset other than 2-3/8" or 2-3/4".** Refer to the manufacturers instructions for installations with backsets other than 2-3/8" or 2-3/4".

**Check the width of your door prior to using this jig.** This installation jig is designed for use on 1-3/8" and 1-3/4" thick doors. This jig will automatically center to the width of a 1-3/8" or 1-3/4" door when initially positioned on the door.

**Do not use this jig for door widths other than 1-3/8" or 1-3/4" thick.** Refer to the manufacturers instructions for installation into doors with widths other than 1-3/8" or 1-3/4" thick.

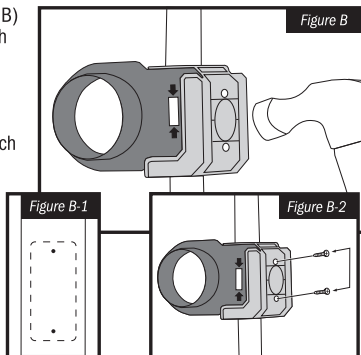
## 1. SET JIG TO PROPER BACKSET

(Figure A)  
Make sure that the proper backset depth appears in the backset selection window.



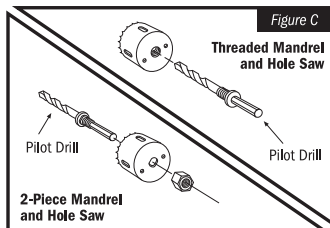
## 2. SECURE JIG TO DOOR (Figure B)

Position the jig to the desired latch height.  
Use hammer to lightly set the position of the jig on the door. This will score the wood for easy removal and installation of the latch plate (inset figure B-1).  
Use the latch plate screws provided with your lockset to firmly secure the jig to the door (inset figure B-2).

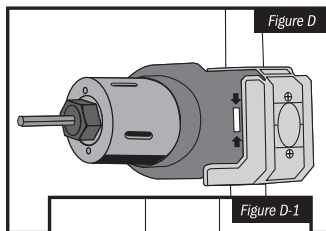


## 3. BORING THE FACE HOLES AND LATCH HOLE

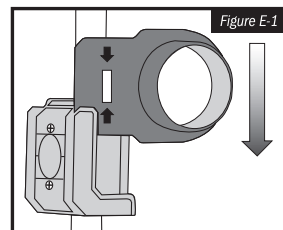
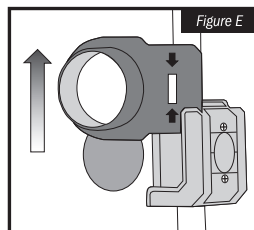
Attach the 2-1/8" hole saw to the mandrel / pilot drill (figure C). Securely insert the assembled hole saw and mandrel into your drill.



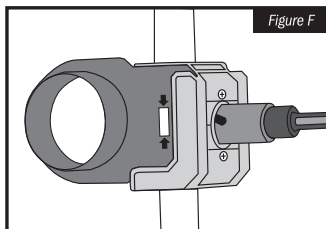
With your drill set on low speed begin the face bore through the True-Guide™ hole locator on the front of the door (figure D). To avoid splintering, STOP drilling once the pilot drill appears on the other side of the door (inset figure D-1).



Remove the True-Guide™ face bore template from the front of the door (figure E) and place it in the same position on the back of the door (figure E-1). Make sure that the proper backset depth appears in the backset selection window. See figure A for proper backset selection.

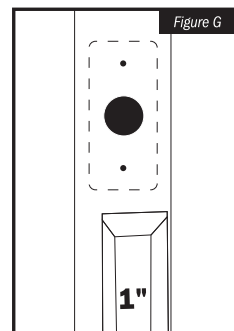


Finish the face bore by placing the pilot drill into the hole on the back of the door and continue drilling through the True-Guide™ template until the hole is complete. Replace the 2-1/8" hole saw with the 1" hole saw and bore the latch hole through the smaller hole in the jig (figure F).



## 4. MAKING THE RECESS FOR THE LATCH PLATE

Remove the entire jig from the door. Use a sharp chisel to remove the material that had been scored by the installation jig (figure G). Check the depth of the recess by sliding the latch into the door. Use your chisel to make any minor adjustments to the depth of the recess.



## 5. INSTALL THE LATCH AND DOOR HANDLES ACCORDING TO THE MANUFACTURERS INSTRUCTIONS PROVIDED WITH YOUR LOCKSET.

©2005

**IRWIN.**

Industrial Tools  
Huntersville, NC 28078  
U.S.A.  
1-800-GO-IRWIN

[www.irwin.com](http://www.irwin.com)