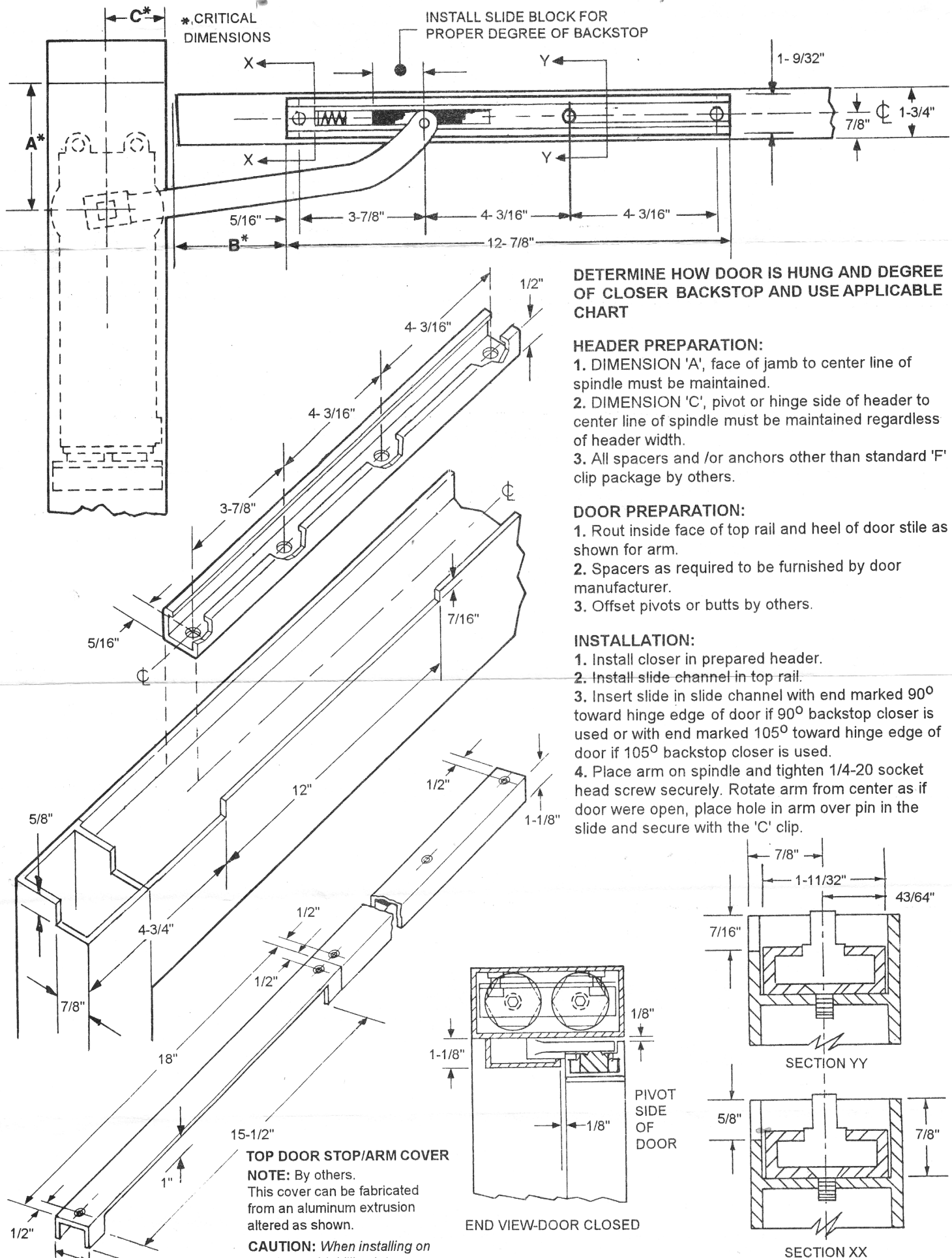
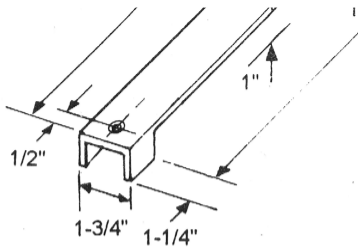


Offset Arm for OHC Aluminum Door & Frame



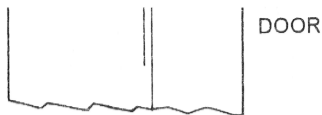


TOP DOOR STOP/ARM COVER

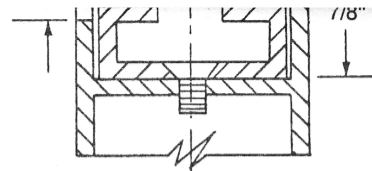
NOTE: By others.

This cover can be fabricated from an aluminum extrusion altered as shown.

CAUTION: When installing on header avoid drilling into closer body.



END VIEW-DOOR CLOSED



SECTION XX
ALUMINUM FRAME DOOR

3/4" OFFSET PIVOTED DOOR FLUSH DOOR MINIMUM 4" HEADER

Backstop	A	B	C
105°	3-3/4"	5-9/32"	2"
90°	3"	5-3/8"	2"

5/8" OFFSET PIVOTED DOOR 1/8" RECESSED DOOR MINIMUM 4" HEADER

Backstop	A	B	C
105°	3-3/4"	5-13/32"	2"
90°	3"	5-1/2"	2"

BUTT HINGED DOOR FLUSH DOOR MINIMUM 4" HEADER

Backstop	A	B	C
105°	2-3/4"	4-29/32"	2"
90°	2-3/4"	5"	2"

BUTT HINGED DOOR 1/8" RECESSED DOOR MINIMUM 4" HEADER

Backstop	A	B	C
105°	2-3/4"	4-29/32"	2"
90°	2-3/4"	5"	2"