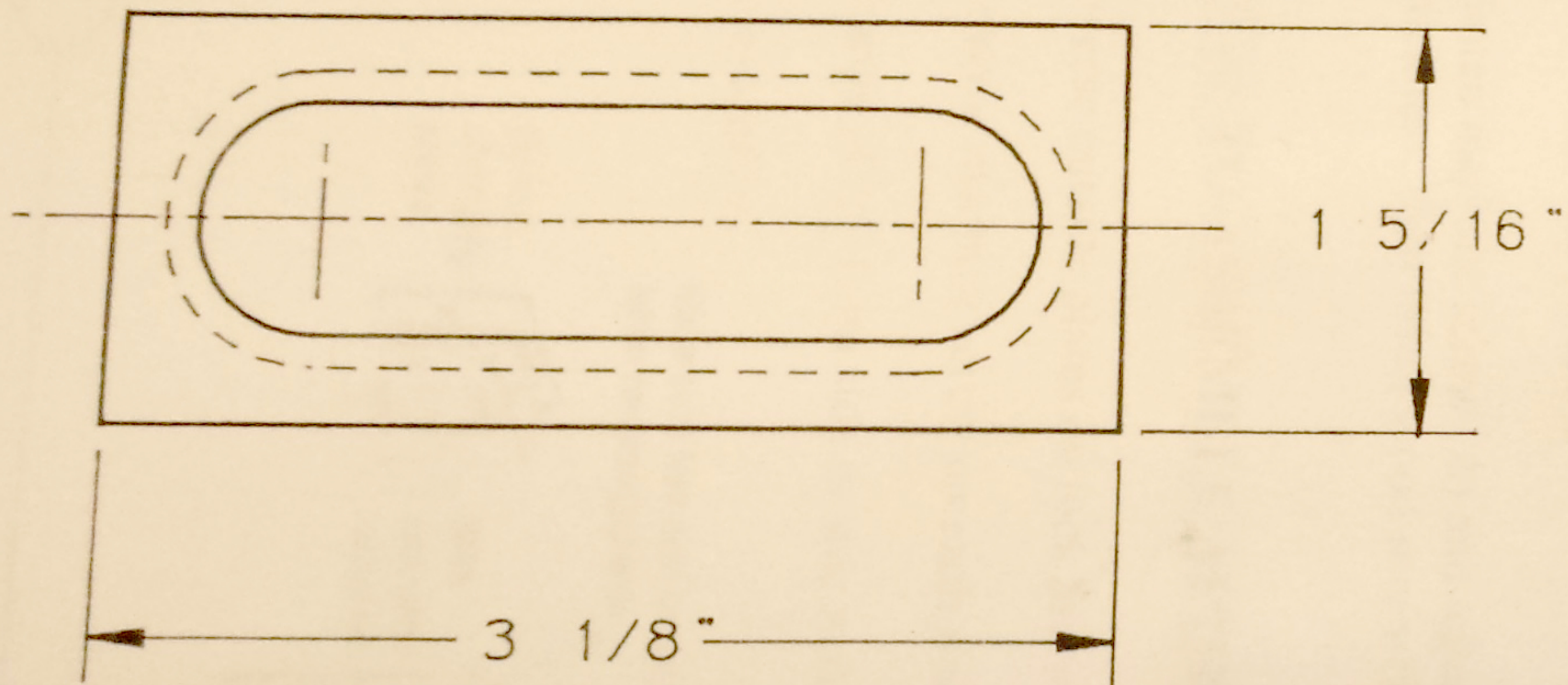
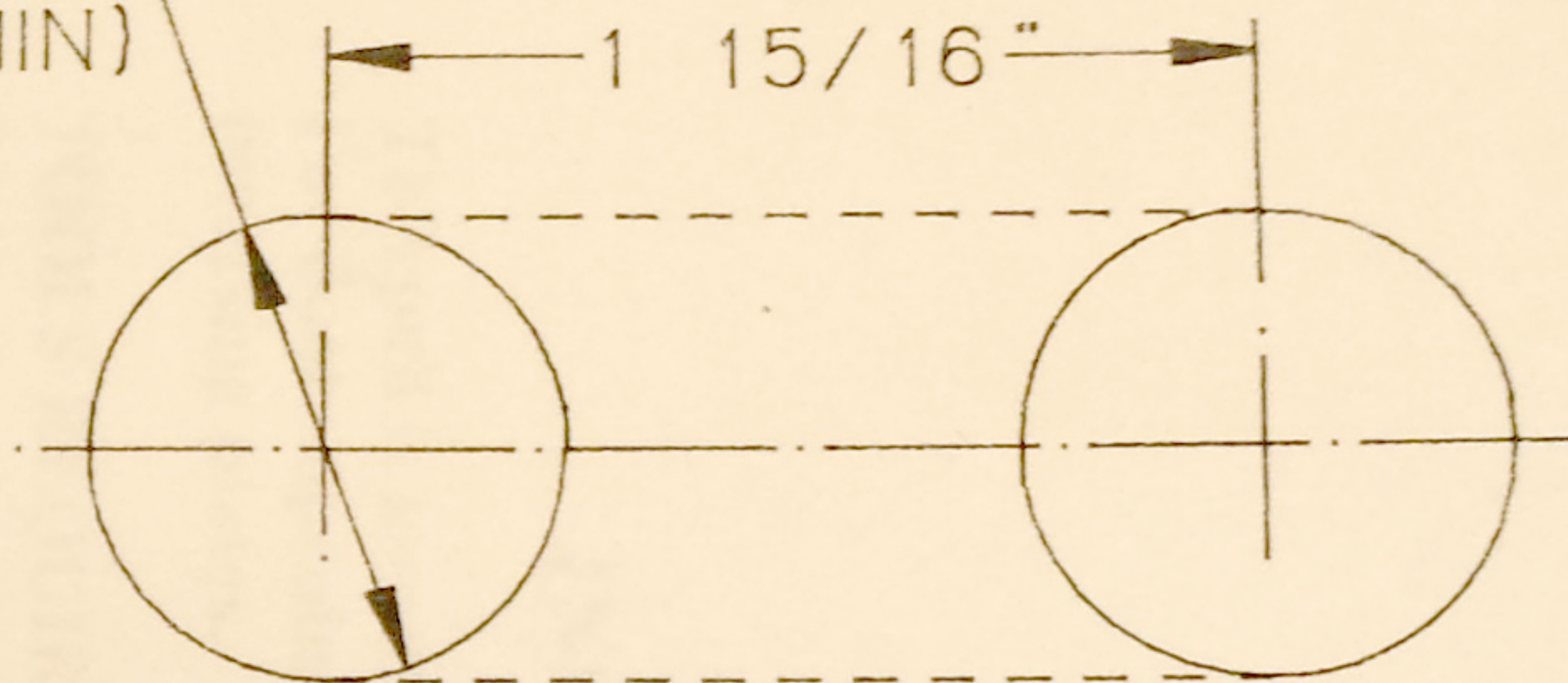


1.0" DIA  
(3/8" DP. MIN)

### HOLE PREPARATION



### INSTALLATION INSTRUCTIONS

1. REMOVE BACK PLATE FROM PULL BODY
2. PLACE PULL INTO PREPARED HOLE AND MARK SCREW HOLE LOCATIONS
3. REMOVE PULL AND DRILL SCREW HOLES WITH 3/32" BIT, 5/8" DEEP
4. ASSEMBLE BACK PLATE ON PULL, PUSH INTO HOLE AND SECURE WITH (2) #4 OVAL HEAD WOOD SCREWS

