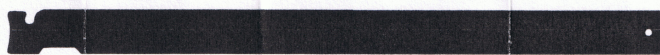


Instructions



The Super Jim™



No. CO-11

The Super Jim™ is a wider version of the Original Slim Jim™.

To use, enter the tool 1 1/2" in front of the button between the weather stripping and the window. Lower past the lock until the opener makes contact with the tail piece of the lock. Bring the tool to a vertical position, drawing it upward about an inch, positioning it above the tail piece. Then push downward. This action should "pop" the button up.

It is necessary to BOW the tool on many of the models having "bubble-shaped" doors. Form the tool to the shape of a spoon with the scoop toward you, compensating for the door shape.

Cars having the button near the center of the door, are opened in the same manner. Enter the tool 1 1/2" in front of the button and slide toward the lock, as mentioned above.

The alternate and also successful method for opening is to curve the tool and enter it on the driver's side at a point midway across the outside door handle. Lower the tool to a depth of 9" to 10", until contact is made with the linkage. By pulling upward the button will "pop".

"The Super Jim™ is an excellent tool for vehicles with vertical linkage or a lazy pawl.

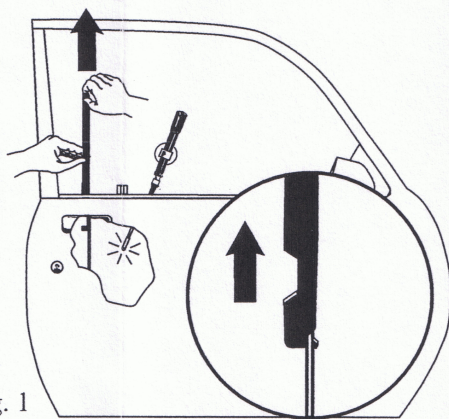


Fig. 1

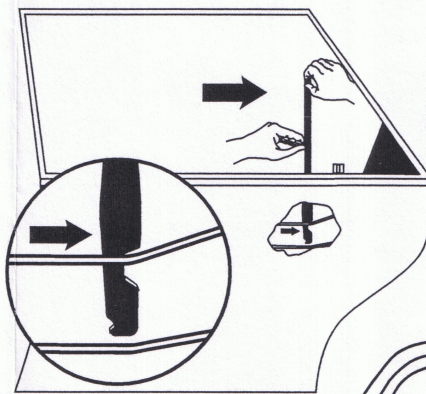


Fig. 2

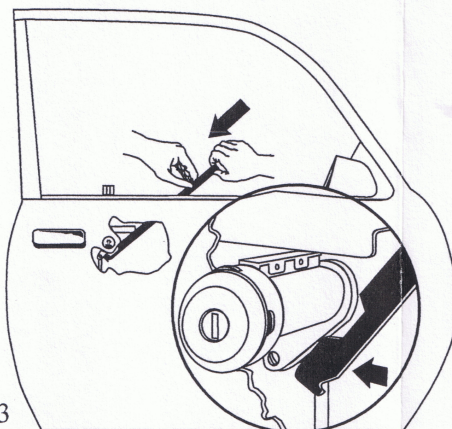


Fig. 3

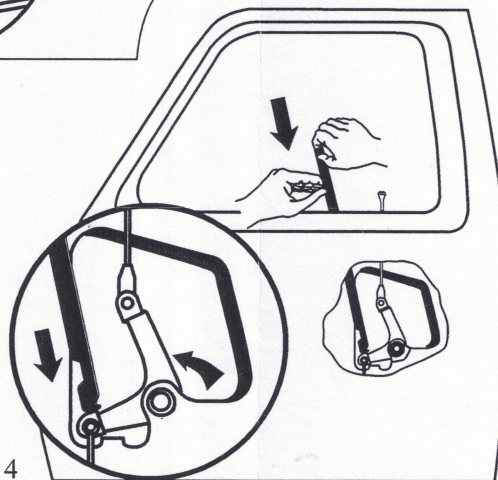


Fig. 4

092906 35T00-004-00