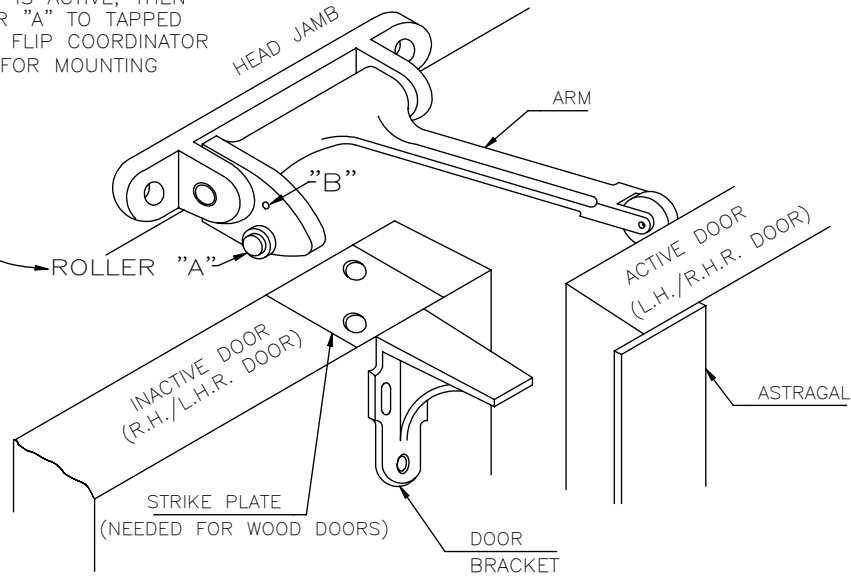
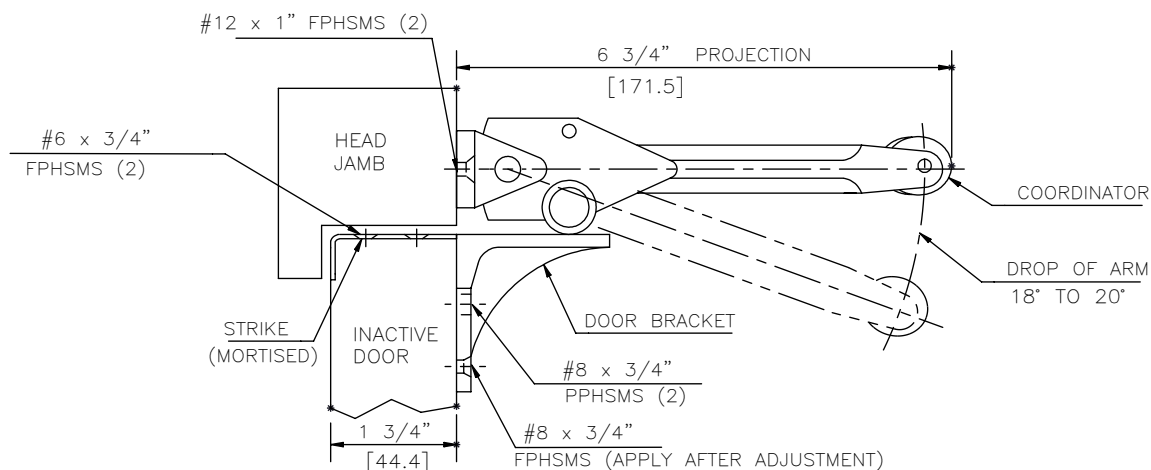


NOTE:  
IF R.H. DOOR IS ACTIVE, THEN  
SWITCH ROLLER "A" TO TAPPED  
HOLE "B" AND FLIP COORDINATOR  
180 DEGREES FOR MOUNTING

2. 297C CARRY BAR IS NEEDED WHEN INSTALLING AN ASTRAGAL. THE CARRY BAR WILL KEEP THE ASTRAGAL FROM DAMAGE WHEN THE INACTIVE DOOR IS OPENED FIRST.



ALL NON-BRACKETED DIMENSIONS ARE IN INCHES, ALL BRACKETED DIMENSIONS ARE IN MILLIMETERS.



**HAGER COMPANIES** 139 Victor Street, St. Louis, MO 63104 - (800) 325-9995 - Fax (800) 782-0149

