

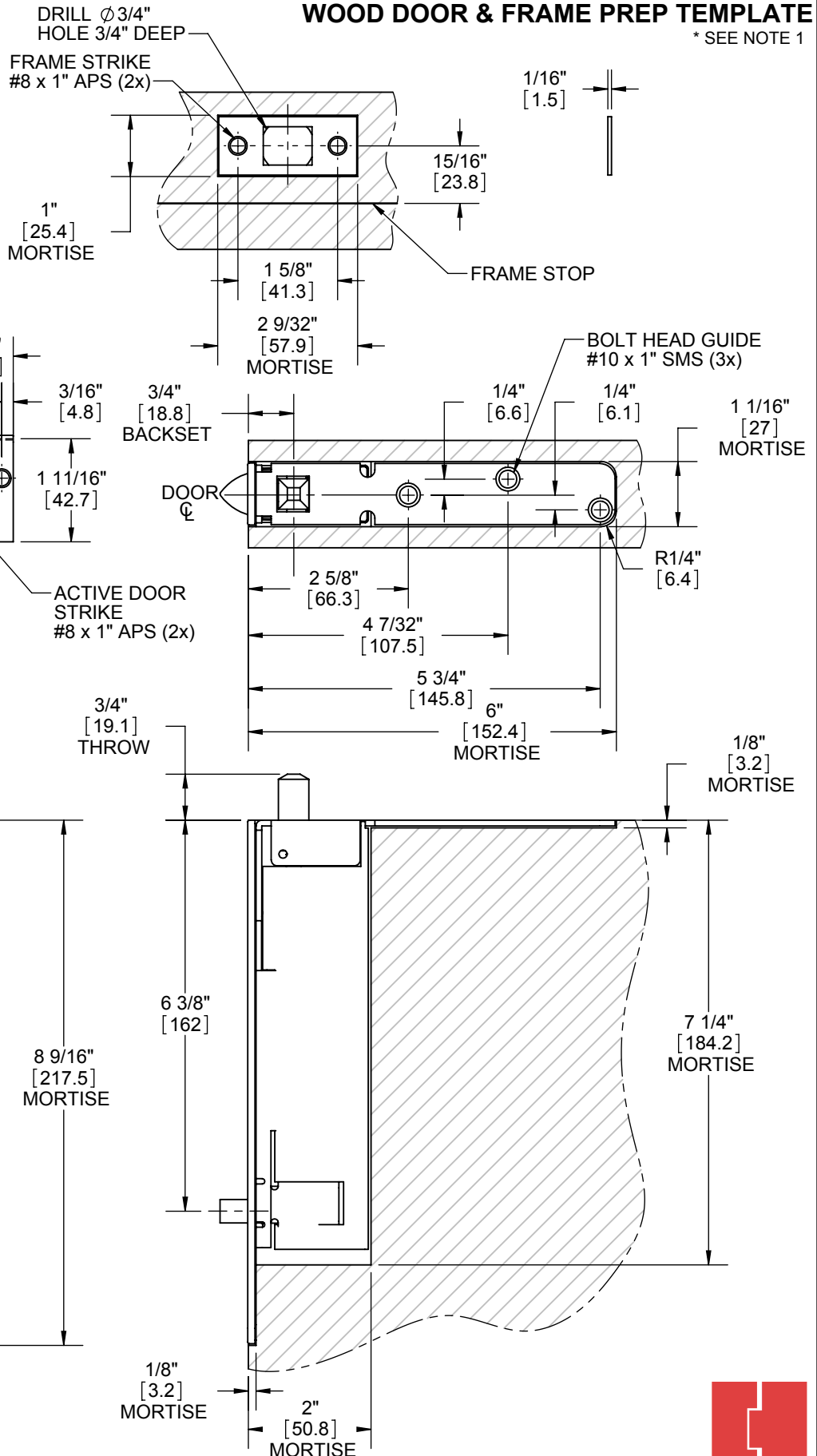
NOTES:

- 291D CONSISTS OF TWO 291S FOR TWO POINT LATCHING.
- 291D HAS A 1-1/2 HR FIRE RATING FOR WOOD DOORS UP TO 4 FT. WIDE X 9 FT. TALL.
- DIMENSIONS SHOWN ON TEMPLATE ARE FOR TOP FLUSH BOLTS. FOR BOTTOM FLUSH BOLTS INVERT & MEASURE FROM BOTTOM EDGE OF THE DOOR.
- MORTISE THE ACTIVE DOOR STRIKE 1/16" [1.5] DEEP IF THE GAP BETWEEN THE TWO DOORS IS LESS THAN 3/16" [4.5].

INSTALL CURVED LIP ON THE DOOR EDGE THAT MAKES INITIAL CONTACT WITH FLUSHBOLT ON THE INACTIVE DOOR

291S/291D* AUTOMATIC FLUSHBOLT WOOD DOOR & FRAME PREP TEMPLATE

* SEE NOTE 1



BOLT HOUSING
8-32 x 1/2\"
FHMS (2x)

#8 x 1\"
APS (2x)

1/2\"
[12.7]
1 1/16\"
[27]
MORTISE

NOTE: HAGER RESERVES THE RIGHT TO MAKE PART CHANGES AND IS NOT RESPONSIBLE FOR OBSOLETE DRAWING ERRORS. TO ENSURE YOUR DRAWING IS CURRENT VISIT WWW.HAGERCO.COM.



NOT TO SCALE

DIMENSIONS IN [] ARE IN MILLIMETERS

TEMPLATE NO: T291S	DRAWING NO: T-TA00170	REV: 04	SHEET 1 OF 1
HAGER COMPANIES 139 Victor Street, St. Louis, MO 63104 - (800) 325-9995 - Fax (800) 782-0149			