

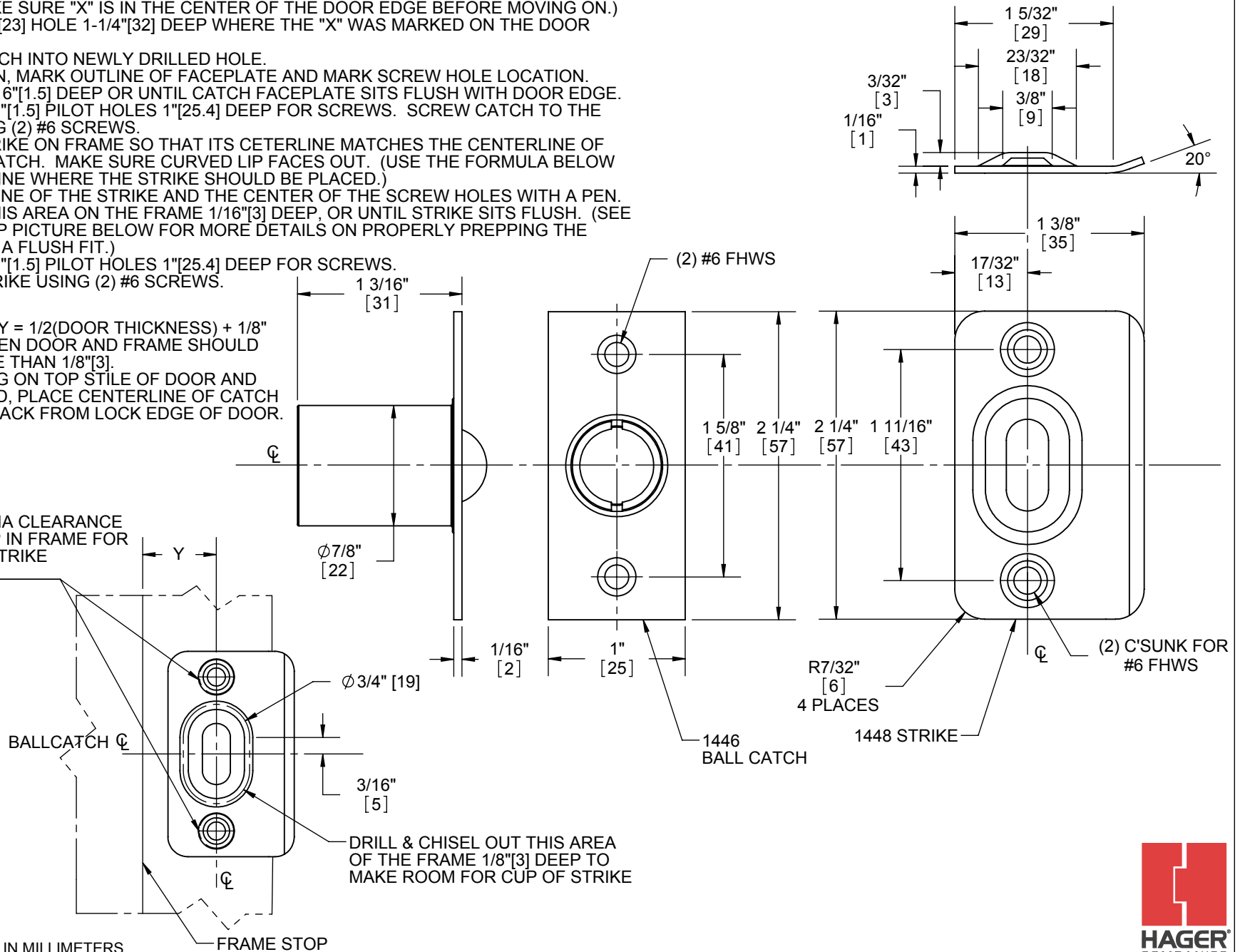
## 1446 BALL CATCH & STRIKE INSTRUCTIONS

1. CHOOSE HEIGHT AT WHICH TO MOUNT HARDWARE AND MARK AN "X" ON THE DOOR EDGE. (MAKE SURE "X" IS IN THE CENTER OF THE DOOR EDGE BEFORE MOVING ON.)
2. DRILL  $\varnothing 7/8"$ [23] HOLE 1-1/4"[32] DEEP WHERE THE "X" WAS MARKED ON THE DOOR EDGE.
3. INSERT CATCH INTO NEWLY DRILLED HOLE.
4. USING A PEN, MARK OUTLINE OF FACEPLATE AND MARK SCREW HOLE LOCATION.
5. MORTISE 1/16"[1.5] DEEP OR UNTIL CATCH FACEPLATE SITS FLUSH WITH DOOR EDGE.
6. DRILL  $\varnothing 1/16"$ [1.5] PILOT HOLES 1"[25.4] DEEP FOR SCREWS. SCREW CATCH TO THE DOOR USING (2) #6 SCREWS.
7. LINE UP STRIKE ON FRAME SO THAT ITS CENTERLINE MATCHES THE CENTERLINE OF THE BALL CATCH. MAKE SURE CURVED LIP FACES OUT. (USE THE FORMULA BELOW TO DETERMINE WHERE THE STRIKE SHOULD BE PLACED.)
8. MARK OUTLINE OF THE STRIKE AND THE CENTER OF THE SCREW HOLES WITH A PEN.
9. MORTISE THIS AREA ON THE FRAME 1/16"[3] DEEP, OR UNTIL STRIKE SITS FLUSH. (SEE FRAME PREP PICTURE BELOW FOR MORE DETAILS ON PROPERLY PREPPING THE FRAME FOR A FLUSH FIT.)
10. DRILL  $\varnothing 1/16"$ [1.5] PILOT HOLES 1"[25.4] DEEP FOR SCREWS.
11. ATTACH STRIKE USING (2) #6 SCREWS.

NOTES:

1. DIMENSION Y = 1/2(DOOR THICKNESS) + 1/8"
2. GAP BETWEEN DOOR AND FRAME SHOULD BE NO MORE THAN 1/8"[3].
3. IF MOUNTING ON TOP STILE OF DOOR AND FRAME HEAD, PLACE CENTERLINE OF CATCH 2-1/2"[63.5] BACK FROM LOCK EDGE OF DOOR.

DRILL (2) 3/8"[9.5] DIA CLEARANCE  
HOLES 1/8"[3] DEEP IN FRAME FOR  
C'SUNK AREA OF STRIKE



DIMENSIONS IN [ ] ARE IN MILLIMETERS

REV: 01

SHEET 1 OF 1

**HAGER COMPANIES** 139 Victor Street, St. Louis, MO 63104 - (800) 325-9995 - Fax (800) 782-0149

