

# 4500 Series

HEAVY DUTY COMMERCIAL APPLICATION



Hager 4500 Series Exit Devices are ideal for use in heavy duty commercial applications including office buildings, medical facilities, schools, and hospitality structures. The Hager 4500 Series is designed and engineered to provide a lifetime of superior performance on doors in heavy duty commercial applications. Properly applied and maintained Hager 4500 Series Exit Devices and Trim are backed by a lifetime warranty, providing peace of mind from distributor to building owner. Go to [www.hagerco.com](http://www.hagerco.com) for specific warranty conditions.

Hager 4500 Series Exit Devices are BHMA certified Grade 1 and meet Life Safety codes and Fire Safety requirements. The 4500 Series Rim and Surface Vertical Rod devices meet ANSI requirements to be listed as Severe Windstorm Components and are approved for High Velocity Hurricane Zone areas.

Extruded aluminum construction, stainless steel push bar cover, die cast caps and covers, and dead locking stainless steel Pullman type latchbolts provide premium security and performance at value pricing.





## 4500 SERIES - COMPLIANCE & CERTIFICATIONS

### 4500 SERIES DEVICES

BHMA Certified ANSI A156.3 Grade 1



UL305 Listed for Panic Hardware



UL10C Positive Pressure Rated



UL10B Neutral Pressure Rated



Complies with ANSI A117.1 for Accessible Buildings and Facilities



ANSI A 250.13 Severe Windstorm Resistant Component

Miami Dade NOA #11-1219.14

RIM	SVR	LBR	CVR	CLB	MOR
YES	YES	YES	YES	YES	YES
YES	YES	YES	YES	YES	YES
YES	YES	YES	YES	YES	YES
YES	YES	YES	YES	YES	YES
YES	YES	---	---	---	---
YES	YES	---	---	---	---

### 4500 SERIES FIRE-RATED DEVICES

UL/cUL Listed for "A" Label Door Up to and Including...

Rim with Fire-rated Removable Mullion 4900UF UL/cUL Listed and Warnock Hersey Listed for "A" Label Door Up to and Including...



VR X VR SAME DIRECTION\*

UL/cUL Listed for "A" Label Door Up to and Including...

VR X VR Double Egress

UL/cUL Listed for "A" Label Door Up to and Including...

RIM F	SVR F	LBR F	CVR F	CLB F	MOR F
3 HR 4'X8'	3 HR 4'X10'	---	3 HR 4'X10'	---	3 HR 4'X8'
3 HR 8'X8'	---	---	---	---	---
---	90 MIN 8'X10'	90 MIN 8'X8'	90 MIN 8'X10'	90 MIN 8'X8'	---
---	3 HR 8'X10'	3 HR 8'X8'	3 HR 8'X10'	3 HR 8'X8'	---

\*Currently, no door manufacturer offers a listing over 90 minutes with doors swinging same direction. Consult wood door manufacturers for current UL listings.





## 4500 SERIES - GENERAL INFORMATION

### Installation Made Easy

For the convenience of our customers, Hager Companies introduced several key features to the exit device market:

- Thru-bolts are included with every model. Wood and machine screws are also provided standard in every package.
- Slotted strikes speed up installation, allowing the installer to make easy adjustments to align the latch to the strike.
- Non-handed device offers added versatility and means less inventory.
- Escutcheon trim is surface mounted with the locking mechanism built inside, reducing door preparation and installation time by requiring fewer holes in the door.

### Shim Kits

Shim kits are available for devices on doors with glass bead kits or other interfacing moldings. Each kit contains two 1/8" (3.2 mm) shims and the appropriate longer fasteners.

### Dogging

Cylinder dogging or less dogging are available to replace the standard hex key dogging on panic exit devices. For cylinder dogging, specify CD on order or purchase 4926 for retrofit applications. Unit requires 1-1/8" mortise cylinder (part number 3902) with standard cam. For less dogging, specify LD on order.

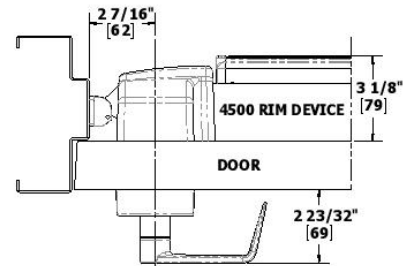
### Sizing

The exit device is cut for 36" (914 mm) and 48" (1219 mm) wide doors. For other door widths, cut exit device to appropriate length. Recommended overall length of exit device is equal to the door width minus four inches. The surface vertical rod devices are supplied for an 84" (2134 mm) opening standard, but can be ordered for a 96" (2438 mm) opening. Extension rods are available to accommodate openings taller than 96" (2438 mm) and up to 120" (3048 mm).

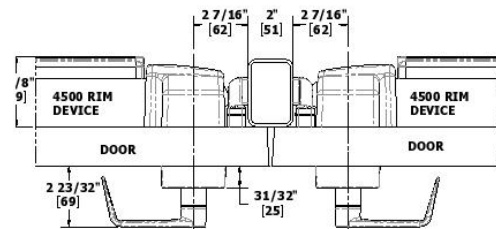
Trim Functions	Part Number	Function Description	ANSI Number
Blank Escutcheon	45BE, 45MB	Always operable (Passage)	14
Cylinder Escutcheon	45CE, 45MC	Key locks or unlocks lever	08
Dummy	45DT, 45MD 45PD	Pull when device is dogged down	02
Night Latch	45NL, 45MN 45PN	Key retracts latchbolt	03
Cylinder Thumbpiece	45PT	Key locks or unlocks thumbpiece	05
Electrified Trim	45ET EL	Fail safe	E05
	45ET EU	Fail secure	E06

### Applications

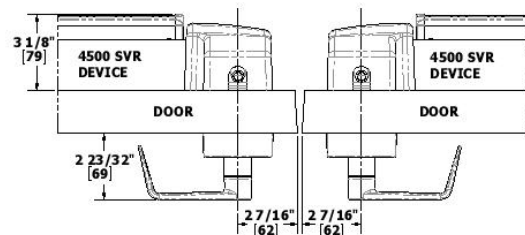
#### Single Door (Rim Device)



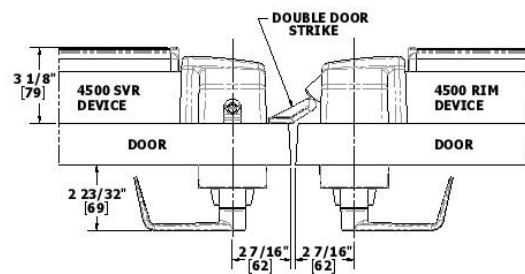
#### Double Door with Mullion (Rim x Rim)



#### Double Door (SVR x SVR)

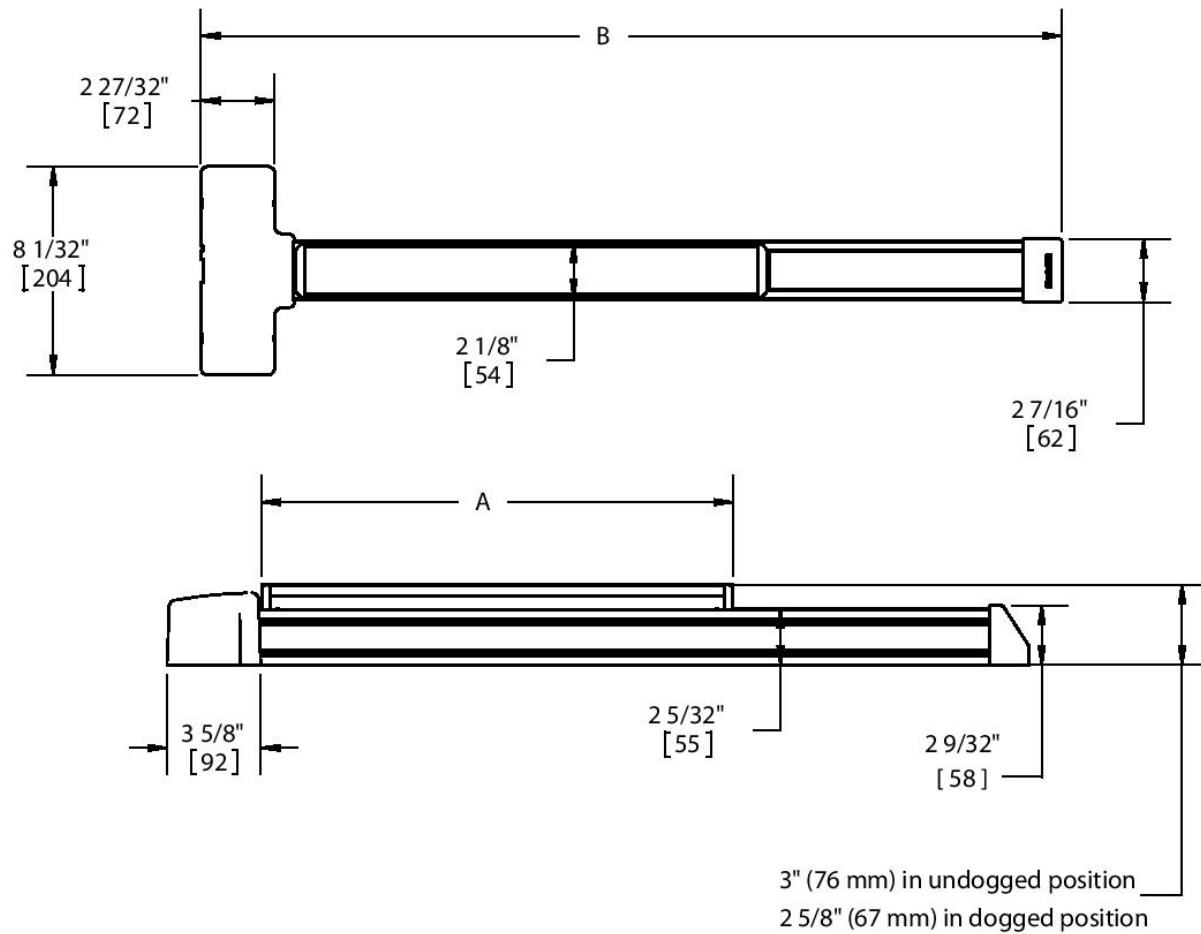


#### Double Door (SVR x Rim)





## 4500 SERIES - DEVICE PROFILES



4500 SERIES	A	B
4500 PANIC - 36"	18 5/32"(461mm)	33 5/32"(842mm)
4500 FIRE - 36"		
4500 PANIC - 48"	24"(611mm)	44"(1121mm)
4500 FIRE - 48"		







## 4500 SERIES - HOW TO ORDER

### 4500 SERIES EXIT DEVICE

4501	RIM	F	36"	US3	1-3/4"	ELR
<b>Type</b>		<b>Rating</b>		<b>Finish</b>	<b>Electric Modifications</b>	
RIM - Rim Device				US3	AI - Authorized Ingress ***	
SVR - Surface Vertical Rod				US4	ALK - Alarm Kit	
LBR - Surface Vertical Rod				US10	ALL - Alarm Kit w/ Tamper Switch and Latch Monitor	
Less Bottom Rod *				US10B	ALM - Alarm Kit w/ Latch Monitor	
CVR - Concealed Vertical Rod				US26	ALT - Alarm Kit w/ Tamper Switch	
CLB - Concealed Vertical Rod				US26D	ED - Electric Dogging	
Less Bottom Rod *				US32D	EDRX - Electric Dogging w/ Request to Exit	
DMY - Dummy Push Pad			<b>Door Size**</b>		ELR - Electric Latch Retraction	
MRT - Mortise Device (MC, MB, MD)			36"	<b>Door Thickness</b>	ELRX - Electric Latch Retraction w/ Request to Exit	
MRTN - Mortise Night Latch Device (MN)			48"	1-5/8"	LM - Latchbolt Monitor ***	
			36" x 84"	1-3/4"	RX - Request to Exit	
			36" x 96"	2"	RX2 - Dual Request to Exit	
			48" x 84"	2-1/2"	RXAI - Request to Exit w/ Authorized Ingress ***	
			48" x 96"	3"	RXLM - Request to Exit w/ Latchbolt Monitor ***	
					MLR - Motor Driven Electric Latch Retraction	
					MLRX - Motor Driven Electric Latch Retraction w/ Request to Exit	
<b>Product Group</b>						
4500 Series, Grade 1						

\*Fire-rated LBR and CLB devices must be ordered in pairs of vertical rod devices or can be used in conjunction with an approved automatic or constant latching flush bolt. When ordering pairs, specify one device LBR and second device LBR with fire bolt, for example: 4501 LBR Fire 36" x 84" plus 4501 LBR Fire 36" x 84" EO with bolt -OR- 4501 LBR Fire 36" x 84" plus an approved automatic or constant latching flush bolt. 24" door size available (Extended lead-time). \*\*\* Not available on Mortise Exit Devices

### 4500 SERIES TRIM

45	CE	ARC	US3	1-3/4"	EL24
<b>Product Group</b>	<b>Trim/Function</b>	<b>Lever Style</b>	<b>Finish</b>	<b>Door Thickness</b>	<b>Options</b>
45 - 4500 Series, Grade 1			US3	1-5/8"	EL12- Fail Safe, 12 Volt ***
BE - Blank Escutcheon		ARC - Archer	US4	1-3/4"	EL24 - Fail Safe, 24 Volt ***
Function 14, always operable		AUG - August	US10	2"	EU12- Fail Secure, 12 Volt ***
CE - Cylinder Escutcheon		WLM - William	US10B	2-1/2"	EU24 - Fail Secure, 24 Volt ***
Function 08, key locks/unlocks		WTN - Withnell	US26	3"	TW - Tactile Warning
DT - Dummy Trim		CHA - Charles	US26D		A- Antimicrobial Coating
Function 02, pull when dogged down		JHN - Johnston**	US32D (pull plate trim only)		
ET - Electric Escutcheon Trim		JOS - Joshua			
NL - Night Latch (1-3/4" to 2-1/2" doors)		LOU - Louis			
Function 03, key retracts latchbolt		WRN - Warren**			
PD - Pull Plate Dummy Trim (Not available for CVR device)					
Function 02, pull when dogged down					
PN - Pull Plate Night Latch (Not available for CVR device)					
Function 03, key retracts latchbolt					
PT - Thumbpiece Entrance (Not available for CVR device)					
Function 05, key locks or unlocks thumbpiece					
VR - Vandal Resistant					
MB - Mortise Blank Escutcheon (14) *					
MC - Mortise Cylinder Escutcheon (08) *					
MD - Mortise Dummy Trim (02) *					
MN - Mortise Night Latch (03) *					

\* Mortise trim does not match centerline of other 4500 series trim. Cannot be used with 4500 Series Rim or Vertical Rod devices.

\*\* Johnston and Warren lever designs are handed - specify LHR/RH or RHR/LH when ordering.

\*\*\* Not available on Mortise Exit trim

#### Notes:

- Mortise cylinder 3902 is required for use with cylinder escutcheon trim and pull plate with thumbpiece trim and is sold separately.
- Rim cylinder with long tailpiece 3901 is required for use with night latch trim and is sold separately.
- For more cylinder information, please refer to Cylinder, Core & Keying in the Locks section of the catalog.
- If using shim kit, specify total door thickness including shims.
- For ET trim, must specify Fail Safe (EL) or Fail Secure (EU) and 12 or 24 volt.



## 4500 SERIES - GRADE 1 RIM DEVICE

### WARRANTY

Lifetime warranty

### FEATURES

Certification:	BHMA Certified Grade 1 and meets life safety codes and fire-safety requirements. See charts on page 4 for details and options.
Covers:	Stainless steel, zinc
Cover Tube:	Aluminum
Dogging:	<ul style="list-style-type: none"> <li>• Hex key dogging standard on panic-rated devices</li> <li>• Less dogging available on panic-rated devices, specify LD</li> <li>• Cylinder dogging available on panic-rated devices, specify CD (3902 1-1/8" (29 mm) mortise cylinder sold separately)</li> </ul>
End Caps:	<ul style="list-style-type: none"> <li>• Zinc</li> <li>• Flush end cap option available</li> </ul>
Fasteners:	<ul style="list-style-type: none"> <li>• Wood and machine screws</li> <li>• Thru-bolts supplied standard</li> </ul>
Latchbolt:	3/4" (19 mm) throw, pullman type with automatic dead-latching, stainless steel
Strikes:	<ul style="list-style-type: none"> <li>• Stainless steel with stainless steel pin and roller - included standard with panic device</li> <li>• Solid stainless steel - included standard with fire-rated device</li> <li>• Surface applied to frame with slotted holes for easy adjustment</li> <li>• Double door strike for use with surface vertical rod and rim device available</li> </ul>



### SPECIFICATIONS

Door Thickness:	1-3/4" (44 mm) - Standard up to 3", except with night latch (NL) which is 2-1/2"
Door Width:	<ul style="list-style-type: none"> <li>• 36" (914 mm) field sizeable to 30" (762 mm) panic-rated door and 28" (711 mm) fire-rated door</li> <li>• 48" (1219 mm) field sizeable to 36" (914 mm) panic- or fire-rated door</li> </ul>
Projection:	<ul style="list-style-type: none"> <li>• 3" (76 mm) in undogged position</li> <li>• 2-5/8" (67 mm) in dogged position</li> </ul>
Stile Width:	<ul style="list-style-type: none"> <li>• 5-3/8" (137 mm) - minimum stile width required for single door and 5/8" (16 mm) stop</li> <li>• 4-7/8" (124 mm) - minimum stile width required for double door x surface vertical rod with double door strike</li> <li>• 5-3/4" (146 mm) - minimum stile width required for double doors with 2" (51 mm) mullion</li> <li>• All stile widths are measured from door edge.</li> </ul>
Notes:	Recommended for use on appropriately reinforced doors

### TRIM

- 4500 Series excutcheon trim for rim device is surface mounted with a variety of lever options (pp. 22-23)
- Pull plate trim
- Vandal resistant
- Rim cylinder x optional pull

### FINISHES

- US3, US4, US10, US10B, US26, US26D, US32D
- Trim not available in US32D





## 4500 SERIES - GRADE 1 RIM DEVICE - ELECTRIFIED

### WARRANTY

- One-year on electrified components
- Lifetime on hardware components

### FEATURES

- Same as 4500 Series Rim Device



### SPECIFICATIONS

#### Door Width:

- 36" (914 mm) field sizeable to 30" (762 mm) panic-rated door and 28" (711 mm) fire-rated door for devices with any monitoring switches
- 48" (1219 mm) field sizeable to 36" (914 mm) panic- or fire-rated door for devices with any monitoring switches
- 36" field sizeable to 34" door minimum for devices with motorized electric latch retraction or delayed egress
- 36" door minimum for devices with solenoid electric latch retraction, electric dogging or alarm kit
- 48" field sizeable to 42" door minimum for devices with solenoid, electric dogging or alarm kit
- 48" field sizeable to 40" door minimum with motorized electric latch retraction or delayed egress

### FUNCTIONS

- ELR - Electric Latch Retraction
- ED - Electric Dogging
- RX - Request to Exit (field installation kit 2-649-5001)
- RX2 - Dual Request to Exit
- ELRX - Electric Latch Retraction with Request to Exit
- EDRX - Electric Dogging with Request to Exit
- ALK - Alarm Kit (kit 4940, tamper switch 2-649-1090)
- AI - Authorized Ingress
- RXAI - Request to Exit with Authorized Ingress
- LM - Latchbolt Monitor (2-649-0168)
- RXLM - Request to Exit with Latchbolt Monitor
- MLR - Motor Driven Electric Latch Retraction (field installation kit 2-649-5007)
- MLRX - Motor Driven Electric Latch Retraction with Request to Exit
- DE - Delayed Egress (must order wall mount controller 2-679-0630 separately)

*Electrical Specifications and Wire Requirements - See 4500 Series Electric Modifications page 20.*





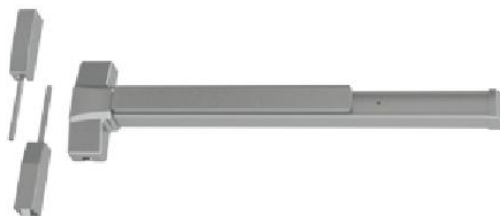
## 4500 SERIES - GRADE 1 SURFACE VERTICAL ROD DEVICE

### WARRANTY

Lifetime warranty

### FEATURES

Certification:	BHMA Certified Grade 1 and meets life safety codes and fire-safety requirements. See charts on page 4 for details and options.
Covers:	Stainless steel, zinc
Cover Tube:	Aluminum
Dogging:	<ul style="list-style-type: none"> <li>• Hex key dogging standard on panic-rated devices</li> <li>• Less dogging available on panic-rated devices, specify LD</li> <li>• Cylinder dogging is available on panic-rated devices, specify CD (3902 1-1/8" (29 mm) mortise cylinder sold separately)</li> </ul>
End Caps:	<ul style="list-style-type: none"> <li>• Zinc</li> <li>• Flush end cap option available</li> </ul>
Fasteners:	<ul style="list-style-type: none"> <li>• Wood and machine screws</li> <li>• Thru-bolts supplied standard</li> </ul>
Latchbolt:	<ul style="list-style-type: none"> <li>• Top - 1/2" (13 mm) throw, pullman type with automatic dead-latching, stainless steel</li> <li>• Bottom - 1/2" (13 mm) throw, pullman type, held retracted during door swing, stainless steel</li> </ul>
Strikes:	<ul style="list-style-type: none"> <li>• Stainless steel with stainless steel pin and roller - included standard with panic device</li> <li>• Solid stainless steel - included standard with fire-rated device</li> <li>• Surface applied to frame with slotted holes for easy adjustment</li> <li>• 10' (3048 mm) fire-rated device requires strike and hook kit, 4912 for top strike</li> <li>• Double door strike for use with surface vertical rod and rim device available</li> </ul>



### SPECIFICATIONS

Door Thickness:	1-3/4" (44 mm) - Standard up to 3", except with night latch (NL) function which is 2-1/2"
Door Width:	<ul style="list-style-type: none"> <li>• 36" (914 mm) field sizeable to 30" (762 mm) panic-rated door and 28" (711 mm) fire-rated door</li> <li>• 48" (1219 mm) field sizeable to 36" (914 mm) panic- or fire-rated door</li> </ul>
Projection:	<ul style="list-style-type: none"> <li>• 3" (76 mm) in undogged position</li> <li>• 2-5/8" (67 mm) in dogged position</li> </ul>
Vertical Rods:	<ul style="list-style-type: none"> <li>• Rods for 7' (2134 mm) doors - 33-1/4" (845 mm) top rod length</li> <li>• Rods for 8' (2438 mm) doors - 45-1/4" (1149 mm) top rod length</li> <li>• Extension rods kits available, 2' (610 mm) or 3' (914 mm) for doors over 7'</li> </ul>
Stile Width:	<ul style="list-style-type: none"> <li>• 5-3/8" (137 mm) - Minimum stile width required for single door and 5/8" (16 mm) stop</li> <li>• 4-7/8" (124 mm) - Minimum stile width required for double doors</li> <li>• 4-7/8" (124 mm) - Minimum stile width required for double door x Rim Device with double door strike</li> <li>• All stile widths are measured from door edge</li> </ul>
Notes:	<ul style="list-style-type: none"> <li>• Center line prep is 40". If door prep elevation is lower, a longer top rod will need to be ordered.</li> <li>• Recommended for use on appropriately reinforced doors</li> </ul>

### TRIM

- 4500 Series escutcheon trim for vertical rod device is surface mounted with variety of lever options (pp. 22-23)
- Pull plate trim (excluding 45PT)
- Vandal resistant
- Rim cylinder x optional pull

### FINISHES

- US3, US4, US10, US10B, US26, US26D, US32D
- Trim is not available in US32D







## 4500 SERIES - GRADE 1 SURFACE VERTICAL ROD DEVICE - LESS BOTTOM ROD (LBR)

### WARRANTY

Lifetime warranty

### FEATURES

#### Certification:

BHMA Certified Grade 1 and meets life safety codes and fire-safety requirements. See charts on page 4 for details and options.

#### Covers:

Stainless steel, zinc

#### Cover Tube:

Aluminum

#### Dogging:

- Hex key dogging standard on panic-rated devices
- Less dogging available on panic-rated devices, specify LD
- Cylinder dogging is available on panic-rated devices, specify CD (3902 1-1/8" (29 mm) mortise cylinder sold separately)

#### End Caps:

- Zinc
- Flush end cap option available

#### Fasteners:

- Wood and machine screws
- Thru-bolts supplied standard

#### Latchbolt:

Top - 1/2" (13 mm) throw, pullman type with automatic dead-latching, stainless steel

#### Strikes:

- Stainless steel with stainless steel pin and roller - included standard with panic device
- Solid stainless steel - included standard with fire-rated device
- Surface applied to frame with slotted holes for easy adjustment
- Double door strike for use with surface vertical rod and rim device available

### SPECIFICATIONS

#### Door Thickness:

1-3/4" (44 mm) - Standard up to 3", except with night latch (NL) function escutcheon trim which is 2-1/2"

#### Door Width:

- 36" (914 mm) field sizeable to 30" (762 mm) panic-rated door and 28" (711 mm) fire-rated door
- 48" (1219 mm) field sizeable to 36" (914 mm) panic- or fire-rated door

#### Projection:

- 3" (76 mm) in undogged position
- 2-5/8" (67 mm) in dogged position

#### Vertical Rods:

- Rods for 7' (2134 mm) doors - 33-1/4" (845 mm) top rod length
- Rods for 8' (2438 mm) doors - 45-1/4" (1149 mm) top rod length
- Extension rod kits available, 2' (610 mm) or 3' (914 mm) for doors over 7'

#### Stile Width:

- 5-3/8" (137 mm) - Minimum stile width required for single door and 5/8" (16 mm) stop
- 4-7/8" (124 mm) - Minimum stile width required for double doors
- 4-7/8" (124 mm) - Minimum stile width required for double doors x rim device with double door strike
- All stile widths are measured from door edge

#### Notes:

- Hole plug for head cover included standard
- Recommended for use on appropriately reinforced doors
- A spring loaded fire bolt 2-649-0166 must be used on fire-rated LBR devices used on a pair of doors to ensure the device's fire rating

### TRIM

- 4500 Series escutcheon trim for vertical rod device is surface mounted with a variety of lever options (pp. 22-23)
- Pull plate trim (excluding 45PT)
- Vandal resistant
- Rim cylinder x optional pull

### FINISHES

- US3, US4, US10, US10B, US26, US26D, US32D
- Trim is not available in US32D



## 4500 SERIES - GRADE 1 SURFACE VERTICAL ROD/LBR DEVICES - ELECTRIFIED

### WARRANTY

- One-year on electrified components
- Lifetime on hardware components

### FEATURES

Same as 4500 Series SVR Device

### SPECIFICATIONS

#### Door Width:

- 36" (914 mm) field sizeable to 30" (762 mm) panic-rated door and 28" (711 mm) fire-rated door for devices with any monitoring switches
- 48" (1219 mm) field sizeable to 36" (914 mm) panic- or fire-rated door for devices with any monitoring switches
- 36" field sizeable to 34" door minimum for devices with motorized electric latch retraction or delayed egress
- 36" door minimum for devices with solenoid electric latch retraction, electric dogging or alarm kit
- 48" field sizeable to 42" door minimum for devices with solenoid, electric dogging or alarm kit
- 48" field sizeable to 40" door minimum with motorized electric latch retraction or delayed egress



### FUNCTIONS

- ELR - Electric Latch Retraction
- ED - Electric Dogging
- RX - Request to Exit (field installation kit 2-649-5001)
- RX2 - Dual Request to Exit
- ELRX - Electric Latch Retraction with Request to Exit
- EDRX - Electric Dogging with Request to Exit
- ALK - Alarm Kit (kit 4940, tamper switch 2-649-1090)
- AI - Authorized Ingress
- RXAI - Request to Exit with Authorized Ingress
- LM - Latchbolt Monitor (2-649-0168)
- RXLM - Request to Exit with Latchbolt Monitor
- MLR - Motor Driven Electric Latch Retraction (field installation kit 2-649-5007)
- MLRX - Motor Driven Electric Latch Retraction with Request to Exit
- DE - Delayed Egress (must order wall mount controller 2-679-0630 separately)

*Electrical Specifications and Wire Requirements - See 4500 Series Electric Modifications page 20.*





## 4500 SERIES - GRADE 1 CONCEALED VERTICAL ROD

### WARRANTY

Lifetime warranty

### FEATURES

Certification:	BHMA Certified Grade 1 and meets life safety codes and fire-safety requirements. See charts on page 4 for details and options.
Covers:	Stainless steel, zinc
Cover Tube:	Aluminum
Dogging:	<ul style="list-style-type: none"> <li>• Hex key dogging standard on panic-rated devices</li> <li>• Less dogging available on panic-rated devices, specify LD</li> <li>• Cylinder dogging is available on panic-rated devices, specify CD (3902 1-1/8" (29 mm) mortise cylinder with standard cam sold separately)</li> </ul>
End Caps:	<ul style="list-style-type: none"> <li>• Zinc</li> <li>• Flush end cap option available</li> </ul>
Fasteners:	<ul style="list-style-type: none"> <li>• Wood and machine screws</li> <li>• Thru-bolts supplied standard</li> </ul>
Latchbolt:	<ul style="list-style-type: none"> <li>• Top - 1/2" (13 mm) throw, pullman type with automatic dead-latching, stainless steel</li> <li>• Bottom - 1/2" (13 mm) throw, pullman type, held retracted during door swing, stainless steel</li> </ul>
Strikes:	<ul style="list-style-type: none"> <li>• Stainless steel with stainless steel pin and rollers - included standard with panic device</li> <li>• Solid stainless steel - included standard with fire-rated device</li> <li>• Top strike mortised into frame</li> <li>• Double door strike for use with CVR and RIM device available</li> </ul>



### SPECIFICATIONS

Door Thickness:	1-3/4" (44 mm) - Standard
Door Width:	<ul style="list-style-type: none"> <li>• 36" (914 mm) field sizeable to 30" (762 mm) panic-rated door and 28" (711 mm) fire-rated door</li> <li>• 48" (1219 mm) field sizeable to 36" (914 mm) panic- or fire-rated door</li> </ul>
Projection:	<ul style="list-style-type: none"> <li>• 3" (76 mm) in undogged position</li> <li>• 2-5/8" (67 mm) in dogged position</li> </ul>
Vertical Rods:	<ul style="list-style-type: none"> <li>• Rods for 7' (2134 mm) doors - 34-5/8" (879 mm) top rod length</li> <li>• Rods for 8' (2438 mm) and 10' (3048 mm) doors - 46-5/8" (1184 mm) top rod length</li> <li>• Extension rod kits available, 2' (610 mm) or 3' (914 mm) for doors over 7'</li> </ul>
Stile Width:	<ul style="list-style-type: none"> <li>• 4" (102 mm) minimum stile width required</li> <li>• All stile widths are measured from door edge</li> </ul>
Notes:	<ul style="list-style-type: none"> <li>• NOT recommended for doors with inset greater than 1/8", for example: double egress frames, or jamb depths over 5-3/4" or greater - for additional information, contact Hager Companies</li> <li>• Center line prep is 40" (1016 mm) - if door prep elevation is lower, a longer top rod will need to be ordered</li> <li>• Recommended for use on appropriately reinforced doors</li> </ul>

### TRIM

- 4500 Series escutcheon trim for vertical rod device is surface mounted with a variety of lever options (pp. 22-23)
- Pull plate trim (excluding 45PT)
- Vandal resistant
- Rim cylinder x optional pull

### FINISHES

- US3, US4, US10, US10B, US26, US26D, US32D
- Trim is not available in US32D





## 4500 SERIES - GRADE 1 CONCEALED VERTICAL ROD - LESS BOTTOM ROD (CLB)

### WARRANTY

Lifetime warranty

### FEATURES

#### Certification:

BHMA Certified Grade 1 and meets life safety codes and fire-safety requirements. See charts on page 4 for details and options.

#### Covers:

Stainless steel, zinc

#### Cover Tube:

Aluminum

#### Dogging:

- Hex key dogging standard on panic-rated devices
- Less dogging available on panic-rated devices, specify LD
- Cylinder dogging is available on panic-rated devices, specify CD (3902 1-1/8" (29 mm) mortise cylinder with standard cam sold separately)

#### End Caps:

- Zinc
- Flush end cap option available

#### Fasteners:

- Wood and machine screws
- Thru-bolts supplied standard

#### Latchbolt:

Top - 1/2" (13 mm) throw, pullman type with automatic dead-latching, stainless steel

#### Strikes:

- Stainless steel with stainless steel pin and roller - included standard with panic device
- Solid stainless steel - included standard with fire-rated device
- Top strike mortised into frame
- Double door strike for use with CVR and RIM device available



### SPECIFICATIONS

Door Thickness: 1-3/4" (44 mm) - Standard

#### Door Width:

- 36" (914 mm) field sizeable to 30" (762 mm) panic-rated door and 28" (711 mm) fire-rated door
- 48" (1219 mm) field sizeable to 36" (914 mm) panic- or fire-rated door

#### Projection:

- 3" (76 mm) in undogged position
- 2-5/8" (67 mm) in dogged position

#### Vertical Rods:

- Rods for 7' (2134 mm) doors - 34-5/8" (879 mm) top rod length
- Rods for 8' (2438 mm) and 10' (3048 mm) doors - 46-5/8" (1184 mm) top rod length
- Extension rod kits available, 2' (610 mm) or 3' (914 mm) for doors over 7'

#### Stile Width:

- 4" (102 mm) minimum stile width required
- All stile widths are measured from door edge

#### Notes:

- NOT recommended for doors with inset greater than 1/8", for example: double egress frames, or jamb depths over 5-3/4" or greater
- A spring loaded fire bolt 2-649-0166 must be used on fire-rated LBR devices used on a pair of doors to ensure the device's fire rating
- Center line prep is 40" (1016 mm) - if door prep elevation is lower, a longer top rod will need to be ordered
- Recommended for use on appropriately reinforced doors

### TRIM

- 4500 Series escutcheon trim for vertical rod device is surface mounted with a variety of lever options (pp. 22-23)
- Pull plate trim (excluding 45PT)
- Vandal resistant
- Rim cylinder x optional pull

### FINISHES

- US3, US4, US10, US10B, US26, US26D, US32D
- Trim is not available in US32D





## 4500 SERIES - GRADE 1 CONCEALED VERTICAL ROD/CLB DEVICES - ELECTRIFIED

### WARRANTY

- One-year on electrified components
- Lifetime on hardware components

### FEATURES

Same as 4500 Series CVR Device

### SPECIFICATIONS

#### Door Width:

- 36" (914 mm) field sizeable to 30" (762 mm) panic-rated door and 28" (711 mm) fire-rated door for devices with any monitoring switches
- 48" (1219 mm) field sizeable to 36" (914 mm) panic- or fire-rated door for devices with any monitoring switches
- 36" field sizeable to 34" door minimum for devices with motorized electric latch retraction or delayed egress
- 36" door minimum for devices with solenoid electric latch retraction, electric dogging or alarm kit
- 48" field sizeable to 42" door minimum for devices with solenoid electric latch retraction, electric dogging or alarm kit
- 48" field sizeable to 40" door minimum with motorized electric latch retraction or delayed egress

#### Notes:

- NOT recommended for doors with inset greater than 1/8", for example: double egress frames, or jamb depths over 5-3/4" or greater
- A spring loaded fire bolt 2-649-0166 must be used on fire-rated LBR devices used on a pair of doors to ensure the device's fire rating

### FUNCTIONS

- ELR - Electric Latch Retraction
- ED - Electric Dogging
- RX - Request to Exit (field installation kit 2-649-5001)
- RX2 - Dual Request to Exit
- ELRX - Electric Latch Retraction with Request to Exit
- EDRX - Electric Dogging with Request to Exit
- ALK - Alarm Kit (kit 4940, tamper switch 2-649-1090)
- AI - Authorized Ingress
- RXAI - Request to Exit with Authorized Ingress
- LM - Latchbolt Monitor (2-649-0168)
- RXLM - Request to Exit with Latchbolt Monitor
- MLR - Motor Driven Electric Latch Retraction (field installation kit 2-649-5007)
- MLRX - Motor Driven Electric Latch Retraction with Request to Exit
- DE - Delayed Egress (must order wall mount controller 2-679-0630 separately)

*Electrical Specifications and Wire Requirements - See 4500 Series Electric Modifications page 20.*





## 4500 SERIES - GRADE 1 MORTISE DEVICE

### WARRANTY

Lifetime warranty

### FEATURES

Certification:	BHMA Certified Grade 1 and meets life safety codes and fire-safety requirements. See charts on page 4 for details and options.
Covers:	Stainless steel, zinc
Cover Tube:	Aluminum
Dogging:	<ul style="list-style-type: none"><li>• Hex key dogging standard on panic-rated devices</li><li>• Less dogging available on panic-rated devices, specify LD</li><li>• Cylinder dogging is available on panic-rated devices, specify CD (3902 1-1/8" (29 mm) mortise cylinder with standard cam sold separately)</li></ul>
End Caps:	<ul style="list-style-type: none"><li>• Zinc</li><li>• Flush end cap option available</li></ul>
Fasteners:	<ul style="list-style-type: none"><li>• Wood and machine screws</li><li>• Thru-bolts supplied standard</li></ul>
Latchbolt:	3/4" (19 mm) throw with anti-friction tongue, all stainless steel with auxiliary deadlocking latch
Strikes:	4-7/8" (124 mm) ASA strike-standard



### SPECIFICATIONS

Door Thickness:	1-3/4" (44 mm) - Standard
Door Width:	<ul style="list-style-type: none"><li>• 36" (914 mm) field sizeable to 30" (762 mm) panic-rated door and 28" (711 mm) fire-rated door</li><li>• 48" (1219 mm) field sizeable to 36" (914 mm) panic- or fire-rated door</li></ul>
Projection:	<ul style="list-style-type: none"><li>• 3" (76 mm) in undogged position</li><li>• 2-5/8" (67 mm) in dogged position</li></ul>
Stile Width:	<ul style="list-style-type: none"><li>• 4-1/2" (114 mm)</li><li>• All stile widths are measured from door edge.</li></ul>
Notes:	Recommended for use on appropriately reinforced doors

### TRIM

- 4500 Series escutcheon trim for mortise device is available with a variety of lever options (p. 25) (3902, 1-5/8" cylinder with standard cam sold separately)
- Mortise cylinder (1-3/8") with cylinder collar (11/16") x optional pull
- Mortise trim (45MB, 45MC, 45MD, 45MN) does not match center line of other 4500 Series trim (45BE, 45CE, 45DT, 45NL)

### FINISHES

- US3, US4, US10, US10B, US26, US26D, US32D
- Trim is not available in US32D







## 4500 SERIES - GRADE 1 MORTISE DEVICE - ELECTRIFIED

### WARRANTY

- One-year on electrified components
- Lifetime on hardware components

### FEATURES

Same as 4500 Series Mortise Device

### SPECIFICATIONS

#### Door Width:

- 36" (914 mm) field sizeable to 30" (762 mm) panic-rated door and 28" (711 mm) fire-rated door for devices with any monitoring switches
- 48" (1219 mm) field sizeable to 36" (914 mm) panic- or fire-rated door for devices with any monitoring switches
- 36" field sizeable to 34" door minimum for devices with motorized electric latch retraction or delayed egress
- 36" door minimum for devices with electric dogging or alarm kit
- 48" field sizeable to 42" door minimum for devices with electric dogging or alarm kit
- 48" field sizeable to 40" door minimum with motorized electric latch retraction or delayed egress

### FUNCTIONS

- ED - Electric Dogging
- EU/EL - Electrified Mortise Exit Device - provides means of locking/unlocking outside lever trim control remotely
- RX - Request to Exit
- RX2 - Dual Request to Exit
- EDRX - Electric Dogging with Request to Exit
- ALK - Alarm Kit (kit 4940, Latchbolt Monitor 2-649-0168, Tamper Switch 2-649-1090)
- MLR - Motor Driven Electric Latch Retraction (field installation kit 2-649-5007)
- MLRX - Motor Driven Electric Latch Retraction with Request to Exit
- DE - Delayed Egress (must order wall mount controller 2-679-0630 separately)

*Electrical Specifications and Wire Requirements - See 4500 Series Electric Modifications page 20.*





## 4500 SERIES - GRADE 1 MORTISE DEVICE - ELECTRIFIED

### WARRANTY

- One-year on electrified components
- Lifetime on hardware components

### FEATURES

Same as 4500 Series Mortise Device

### SPECIFICATIONS

#### Door Width:

- 36" (914 mm) field sizeable to 30" (762 mm) panic-rated door and 28" (711 mm) fire-rated door for devices with any monitoring switches
- 48" (1219 mm) field sizeable to 36" (914 mm) panic- or fire-rated door for devices with any monitoring switches
- 36" field sizeable to 34" door minimum for devices with motorized electric latch retraction or delayed egress
- 36" door minimum for devices with electric dogging or alarm kit
- 48" field sizeable to 42" door minimum for devices with electric dogging or alarm kit
- 48" field sizeable to 40" door minimum with motorized electric latch retraction or delayed egress

### FUNCTIONS

- ED - Electric Dogging
- EU/EL - Electrified Mortise Exit Device - provides means of locking/unlocking outside lever trim control remotely
- RX - Request to Exit
- RX2 - Dual Request to Exit
- EDRX - Electric Dogging with Request to Exit
- ALK - Alarm Kit (kit 4940, Latchbolt Monitor 2-649-0168, Tamper Switch 2-649-1090)
- MLR - Motor Driven Electric Latch Retraction (field installation kit 2-649-5007)
- MLRX - Motor Driven Electric Latch Retraction with Request to Exit
- DE - Delayed Egress (must order wall mount controller 2-679-0630 separately)

*Electrical Specifications and Wire Requirements - See 4500 Series Electric Modifications page 20.*





## 4500 SERIES - DUMMY PUSH PAD

### WARRANTY

Lifetime warranty

### FEATURES

Application: For use with 4500 and 4600 Series Exit Devices

Cover Tube: Aluminum

End Caps:

- Zinc
- Flush end cap option available

Fasteners:

- Wood and machine screws
- Thru-bolts supplied standard

Available Electric Functions:

- RX - Request to Exit
- RX2 - Dual Request to Exit

### SPECIFICATIONS

Door Thickness: 1-3/4" (44 mm) - Standard

Door Width:

- 36" (914 mm) field sizeable to 27" (686 mm) door
- 48" (1219 mm) field sizeable to 36" (914 mm) door

Projection: 2-5/8" (67 mm)

Stile Width:

- 2-1/8" (54 mm) - minimum stile width
- All stile widths are measured from door edge

### FINISHES

• US3, US10B, US26D, US32D







## 4500 SERIES - 4940 ALARM KIT

### WARRANTY

- One-year on electrified components
- Lifetime on hardware components

### SPECIFICATIONS

Battery:	<ul style="list-style-type: none"> <li>• Standard 9-Volt battery required</li> <li>• Audible chirp and alternating LED color flash when battery is low</li> </ul>
Alarm:	100 decibel horn sounds immediately upon pressing push pad
Cylinder:	<ul style="list-style-type: none"> <li>• 1-1/8" or 1-1/4" Mortise cylinders acceptable</li> <li>• Hager standard cam required</li> <li>• Cylinder sold separately</li> </ul>
Activation:	<ul style="list-style-type: none"> <li>• Alarm is armed by turning key clockwise</li> <li>• Alarm is disarmed by turning the key counter-clockwise</li> <li>• Alarm is turned to service mode by turning the key counter-clockwise twice</li> </ul>
Alarm Timing:	<ul style="list-style-type: none"> <li>• Alarm will sound for either 1, 3, 5 minutes or continuously</li> <li>• Times are selectable by on board switches</li> </ul>
Warning Decal:	"Emergency Exit Only – Alarm Will Sound" on push pad of exit device
Indicator:	<ul style="list-style-type: none"> <li>• LED Indicator</li> <li>• Red LED will illuminate intermittently when armed</li> <li>• Green LED will illuminate when unarmed</li> <li>• Blue LED will illuminate in service mode</li> <li>• Alternate colors flash when battery is low</li> </ul>
Options:	<ul style="list-style-type: none"> <li>• Tamper switch available that sounds alarm when end cap is removed</li> <li>• Latch monitor switch is available that sounds alarm when latch is retracted without actuating the push pad</li> <li>• Latch monitor switch typically used with Surface Vertical Rod devices</li> <li>• When utilizing the latch monitor, the outside trim unit will also sound alarm</li> </ul>
Output:	Alarm is equipped with output port





## 4500 SERIES - ELECTRIC MODIFICATIONS

FUNCTION	#	DESCRIPTION
Electric Latch Retraction - Solenoid	ELR	Provides the means of locking or unlocking exit devices remotely. Requires the use of Hager 2901 or 2902 power supply or warranty voided. <i>Note: Mortise Exits require Motor Driven Latch Retraction (MLR).</i>
Electric Dogging	ED	Provides continuous latch retraction and dogging simultaneously.
Request to Exit	RX	Used to shunt an alarm, activate an alarm, provide release of magnetic locks, or signal a console.
Electric Latch Retraction with Request to Exit	ELRX	Provides the means of locking or unlocking exit devices remotely, along with an SPDT switch. Requires the use of Hager 2901 or 2902 power supply or warranty voided. <i>Note: Mortise Exits will require Motor Driven Latch Retraction.</i>
Electric Dogging with Request to Exit	EDRX	Provides continuous latch retraction and dogging simultaneously along with an SPDT switch.
Dual Request to Exit	RX2	Features two SPDT switches
Latchbolt Monitoring	LM	An internal SPDT switch that monitors the latchbolt to signal both egress and access of an opening.
Latchbolt Monitoring/Request to Exit	RXLM	Two internal SPDT switches that monitor the latchbolt and the pushbar simultaneously.
Electric Trim	ET	Provides the means of locking or unlocking outside lever trim controls remotely. Specify Fail Safe (EL) or Fail Secure (EU) and voltage (12V or 24V).
Authorized Ingress/Key Monitoring	AI	An internal SPDT switch that monitors the operation of the outside trim, available for use with either the 45BE, 45CE or 45NL trim or Night Latch by optional pull. Must be ordered with the device.
Request to Exit/Authorized Ingress	RXAI	Two internal SPDT switches that monitor the pushbar and the outside trim simultaneously, available for use with either the 45CE or 45NL trim. Must be ordered with the device.
Delayed Egress	DE	Delays egress for 15 or 30 seconds when unauthorized egress is initiated. Wall mount controller (2-679-0630) provides digital countdown display with verbal instructions or alarm tone only and must be ordered separately.
Motor Driven Electric Latch Retraction	MLR	Provides the means of locking or unlocking exit devices remotely using an electric motor. Recommend Hager 2903 or 2904 Power Supply.
Motor Driven Electric Latch Retraction with Request to Exit	MLRX	Provides the means of locking or unlocking exit devices remotely using an electric motor, along with an SPDT switch. Recommend Hager 2903 or 2904 Power Supply.
Electrified Mortise Exit Device	EU/EL	Provides the means of locking or unlocking outside lever trim controls remotely. Specify Fail Safe (EL) or Fail Secure (EU) and voltage (12V or 24V).

### ELECTRICAL SPECIFICATION/RATINGS AND WIRE REQUIREMENTS

Electrical  
Specification/  
Ratings:

- ED; .225 AMP @ 24 Volt +/- 2V
- RX or LM; 125 VAC (3 AMP current); 30 VDC (2 AMP current)
- ELR; Requires 2901/2902 power supply
- MLR; 1 AMP in rush @ 24 VDC +/- 2V, 400 mA holding

Wire  
Requirements:

- Status switches (i.e. RX, LM, etc.) require 2 wires per switch to monitor a normally open (NO) or normally closed (NC) position
- All devices provide 3 wires per switch so both NO and NC positions can be monitored
- Monitoring both positions will require 3 wires per switch

### QUICK CONNECT

Available on AI, ED, ELR, LM, MLR, and RX

### POWER SUPPLIES

PRODUCT #	DESCRIPTION
2901	For use with 4500/4600 Series electric latch retraction (ELR)
2902	For use with 4500/4600 Series electric latch retraction in a day/night mode of operation (ELR)
2903	Provides 24 Volt DC power for Fail Safe or Fail Secure locking devices and interface with building alarm controls, card readers, keypads, and other door controls
2904	Provides 24 Volt DC power and control for openings with an electrified locking device and automatic door operator
2908	Provides up to 1 amp of 12 or 24 Volt DC power - modular
2909	Provides up to 2 amps of 12 or 24 Volt DC power - modular

### ALARMED DEVICES - SPECIFY WHEN ORDERING (Note: Alarm kit components may be purchased separately)

**ALK - Alarm Kit**

**ALM - ALK with latch monitor switch (recommended for use with SVR devices)**

**ALT - ALK with tamper switch**

**ALL - ALK with latch monitor and tamper switch**





## 4500 SERIES ESCUTCHEON TRIM - FOR 4500 RIM & VERTICAL ROD DEVICES

### WARRANTY

- One-year on electrified components
- Lifetime on hardware components

### SPECIFICATIONS

Escutcheon: 2-7/8" x 10-3/4" (73 mm x 273 mm)

#### Notes:

- Cannot be used with 4500 Series Mortise exit device
- 45BE, 45CE, 45DT, 45NL trim does not match centerline of 4500 Series Mortise trim (45MB, 45MC, 45MD and 45MN)

### LEVERS

Archer, August, Charles, Johnston, Joshua, Louis, Warren, William or Withnell Levers

### FINISHES

US3, US4, US10, US10B, US26, US26D (Not Available in US32D)



#### 45BE

##### Blank Escutcheon

ANSI Function: 14 - Always operable (passage)



#### 45CE

##### Cylinder Escutcheon (Free-wheeling when locked)

ANSI Function: 08 - Key locks or unlocks lever

Cylinder: Requires 3902 mortise cylinder with standard cam (sold separately)



#### 45DT

##### Dummy Trim

ANSI Function: 02 - Pull when device is dogged down



#### 45NL

##### Night Latch

ANSI Function: 03 - Key retracts latchbolt

Cylinder: Requires 3901 rim cylinder with long tailpiece (sold separately)



#### 45ET

##### Electrified Trim (Free-wheeling when locked)

ANSI Function: • 45ET EL- Electric Trim (Fail Safe)

• 45ET EU- Electric Trim (Fail Secure)

Cylinder: Requires 3902 mortise cylinder, 1-1/4" with standard cam (sold separately)

Voltage: 12V or 24V

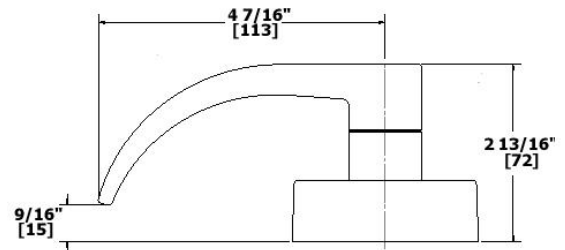
*Electrical Specifications and Wire Requirements - See 4500 Series Electric Modifications page 20.*



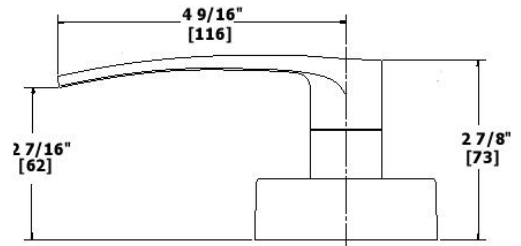


## 4500 SERIES - ESCUTCHEON TRIM - LEVER OPTIONS FOR 4500 RIM & VERTICAL ROD DEVICES

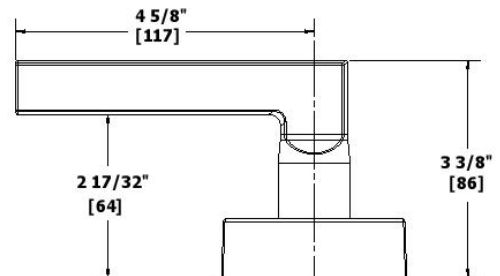
**ARCHER LEVER**



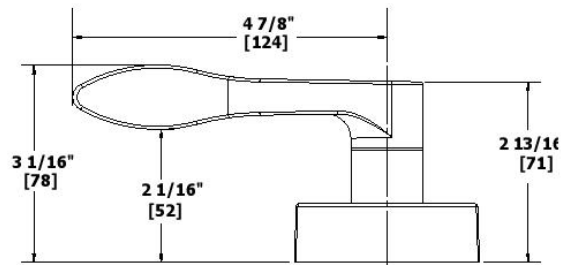
**AUGUST LEVER**



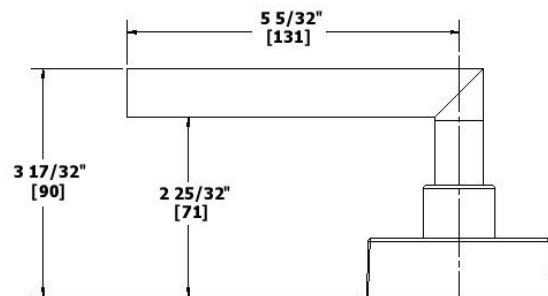
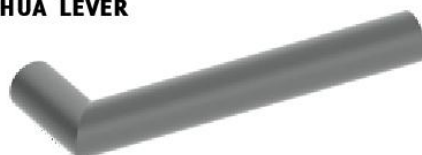
**CHARLES LEVER**



**JOHNSTON LEVER - HANDED**



**JOSHUA LEVER**



2016

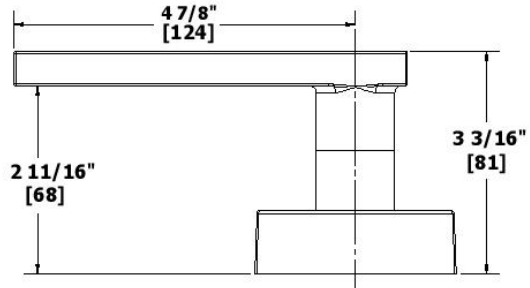
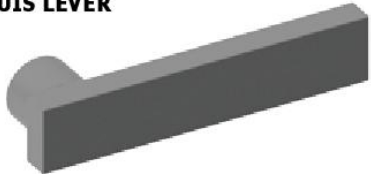
www.hagerco.com



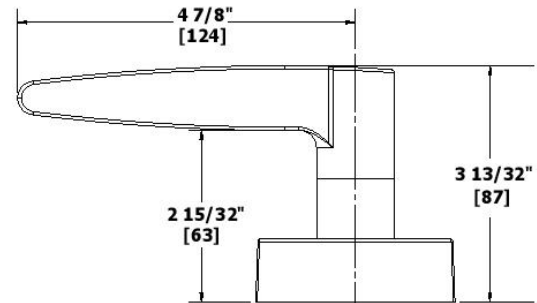
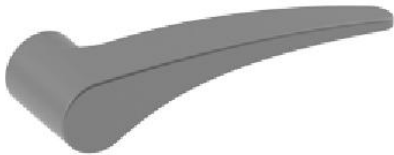


## 4500 SERIES - ESCUTCHEON TRIM - LEVER OPTIONS FOR 4500 RIM & VERTICAL ROD DEVICES

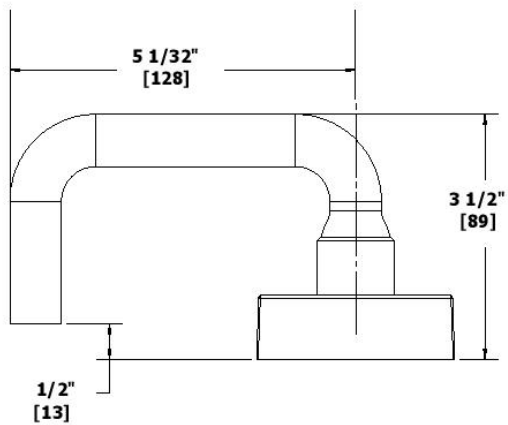
**LOUIS LEVER**



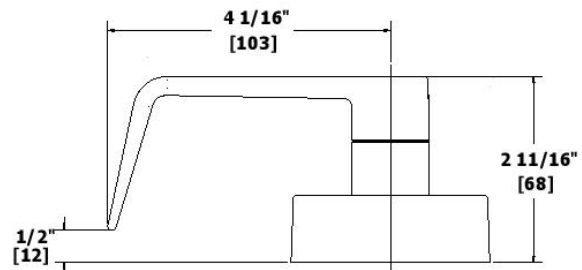
**WARREN LEVER - HANDED**



**WILLIAM LEVER**



**WITHNELL LEVER**





## 4500 SERIES - ESCUTCHEON TRIM - FOR 4500 MORTISE DEVICE

### WARRANTY

- One-year on electrified components
- Lifetime on hardware components

### SPECIFICATIONS

Escutcheon: 2-15/16" x 10" (75 mm x 254 mm)

#### Notes:

- Cannot be used with 4500 Series Rim or Vertical Rod devices
- Mortise trim (45MB, 45MC, 45MD, 45MN) does **not** match center line of other 4500 Series trim (45BE, 45CE, 45DT, 45NL)

### LEVERS

Archer, August, William or Withnell Levers (Not Available in US32D)

### FINISHES

US3, US4, US10, US10B, US26, US26D



#### 45MB

##### Blank Escutcheon - For Use with 4501M Mortise Exit Device

ANSI Function: 14 - Always operable (passage)



#### 45MC

##### Cylinder Escutcheon - For Use with 4501M Mortise Exit Device

ANSI Function: 08 - Key locks or unlocks lever (free-wheeling when locked)

Cylinder: Requires 3902, 1-5/8" mortise cylinder with standard cam (sold separately)



#### 45MD

##### Dummy Trim - For Use with 4501M Mortise Exit Device

ANSI Function: 02 - Pull when device is dogged down

Cylinder: Requires 3902, 1-5/8" mortise cylinder with standard cam (sold separately)



#### 45MN

##### Night Latch - For Use with 4501N Mortise Exit Device

ANSI Function: 03 - Key retracts latchbolt

Cylinder: Requires 3902, 1-5/8" mortise cylinder with standard cam (sold separately)

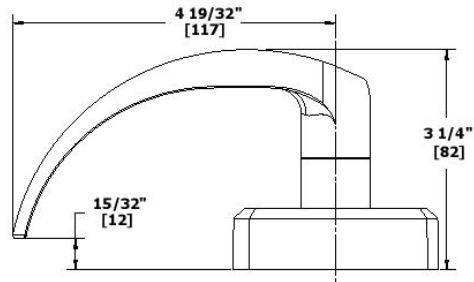




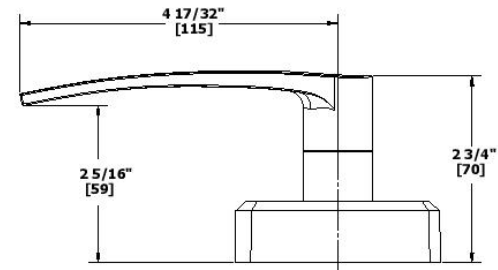


## 4500 SERIES - ESCUTCHEON TRIM - LEVER OPTIONS FOR 4500 MORTISE DEVICE

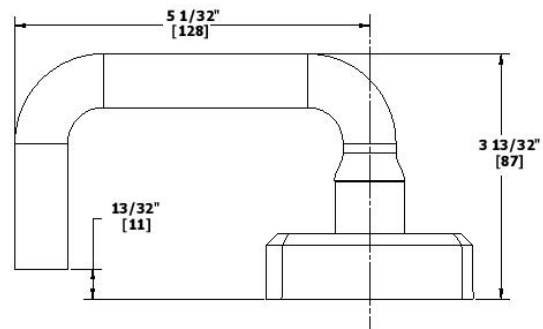
**ARCHER LEVER**



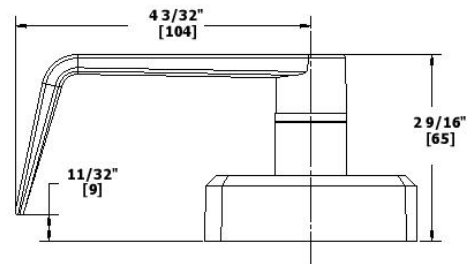
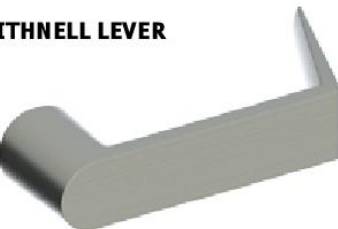
**AUGUST LEVER**



**WILLIAM LEVER**



**WITHNELL LEVER**





## 4500 SERIES - PULL PLATE TRIM

### SPECIFICATIONS (45PD, 45PN, 45PT)

Plate:	3" x 14" (76 mm x 356 mm)
Projection:	1-3/4" (44 mm)
Pull CTC:	5-1/2" (140 mm)



#### 45PD

##### Dummy Trim

ANSI Function:

Finishes:

Notes:

02 - Pull when device is dogged down

US3, US4, US10, US10B, US26, US26D, US32D

For use with 4500 RIM, SVR, LBR, CLB devices, not for use with CVR



#### 45PN

##### Night Latch

ANSI Function:

Finishes:

Cylinder:

Notes:

03 - Key retracts latchbolt

US3, US4, US10, US10B, US26, US26D, US32D

Requires 3901 rim cylinder (sold separately)

- Includes retaining cup for 161 door prep

- For use with 4500 RIM, SVR, LBR, CLB devices, not for use with CVR



#### 45PT

##### Thumb Piece Pull Plate Trim

ANSI Function:

Finishes:

Cylinder:

Notes:

05 - Key locks or unlocks thumbpiece

US32D

Requires 3902 mortise cylinder with standard cam (sold separately)

For use with 4500 Rim exit only, not for use with vertical rod devices



#### 313S

##### Anti Vandal Pull

Certification:

Size:

Projection:

Clearance:

Door Thickness:

Materials:

Finishes:

Fasteners:

Options:

Cylinder:

Notes:

Meets ANSI A156.6 for J401 Pull and J407 Pull Plate

6-11/32" x 11" (161 mm x 280 mm)

1-7/8" (48 mm)

1-5/8" (41 mm)

1-3/4" - 2" (45 mm - 51 mm)

11 gauge stainless steel

US32D

Thru bolts directly to device

- Cylinder cutout available 1-1/4" (32 mm) dia. standard for exit device, specify handing

- Plastisol grip available

Cylinder and cylinder collar must be ordered separately

- Requires 2-649-0137 7/16" cylinder collar with 3901 rim cylinder 1-1/4" - 1-3/8" long (see instructions for more detail)

Available with latchguard (specify 313L)



### RIM Cylinder by Optional Pull

ANSI Function:

Finishes:

Cylinder:

Notes:

03 - Key retracts latchbolt

US3, US4, US10, US10B, US26, US26D, US32D

Requires 3901 rim cylinder (sold separately). Standard (attached) and long tailpieces in every box.

- For use with 4500 RIM, SVR, LBR, CLB devices, not for use with CVR

- For pull options see Trim & Auxiliary section





## 4500 SERIES - STRIKES



### 4915

#### Threshold Strike

Optional strike for use with surface vertical rod exit device and saddle threshold; not for fire-rated doors

Finishes: US32D



### 4924

#### Bottom Strike

Included standard with 4500 Series Vertical Rod exit devices; not for fire-rated doors

Finishes: US32D

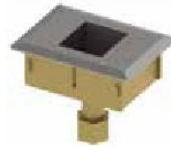


### 4920

#### Strike

Included standard with 4500 Series Rim exit devices; not for fire-rated doors

Finishes: US32D



### 4924F

#### Fire-rated Bottom Strike

Included standard with fire-rated 4500 Series Vertical Rod exit devices

Finishes: US32D



### 4920F

#### Fire-rated Strike

Included standard with fire-rated 4500 Series rim exit devices

Finishes: US32D



### 4945

#### Top Strike

Included standard with 4500 Series Concealed Vertical Rod exit devices; not for fire-rated doors

Finishes: US32D



### 4921

#### Double Door Strike

Optional strike to be used with 4500 Series Surface Vertical Rod and Rim exit devices; not for fire-rated doors

Finishes: US3, US4, US10, US10B, US26, US32D



### 4945F

#### Fire-rated Top Strike

Included standard with fire-rated 4500 Series Concealed Vertical Rod exit devices

Finishes: US32D



### 4923

#### Top Strike

Included standard with 4500 Series Surface Vertical Rod exit devices; not for fire-rated doors

Finishes: US32D



### MORTISE EXIT STRIKE

Included standard with 4500 Series Mortise exit device; not for fire-rated doors.

Finishes: US10B (2-649-0205),  
US26D (2-649-0204),  
US32D (2-649-0203)



### 4923F

#### Fire-rated Top Strike

Included standard with fire-rated 4500 Series Surface Vertical Rod exit devices

Finishes: US32D



### FIRE-RATED MORTISE EXIT STRIKE

Included standard with fire-rated 4500 Series Mortise exit device; not for fire-rated doors.

Finishes: US10B (2-649-0208),  
US26D (2-649-0207),  
US32D (2-649-0206)





## 4500 SERIES - ACCESSORIES



### 4926

#### Cylinder Dogging Conversion Kit

For use with panic-rated 4500 Series devices

- Finishes: US3, US4, US10, US10B, US26, US26D, US32D
- Packaging: One (1) each dogging plate, cylinder collar, cash box nut
- Notes:
- Mortise cylinder 3902 with standard cam, sold separately
  - Specify 36" (914 mm) or 48" (1219 mm)



### 4927

#### Bottom Latch Assembly

For use with 4500 Series Surface Vertical Rod exit device

- Description: 1/2" (13 mm) throw, pullman type, held retracted during door swing, stainless steel
- Finishes: US3, US4, US10, US10B, US26, US26D, US32D
- Packaging: One (1) bottom latch with cover and appropriate fasteners



### 4928

#### Top Latch Assembly

For use with 4500 Series Surface Vertical Rod exit device

- Description: 1/2" (13 mm) throw, pullman type, held retracted during door swing, stainless steel
- Finishes: US3, US4, US10, US10B, US26, US26D, US32D
- Packaging: One (1) top latch with cover and appropriate fasteners



### 2-649-0250/2-649-0257

#### Photoluminescent

Push bar cover option for 4500 & 4600 Series exit devices

- Description: 2-649-0250 - 4500/4600 36"  
2-649-0275 - 4500/4600 48"
- Features:
- Requires no wiring or maintenance
  - Recharges with exposure to ambient light



### 4929

#### Top/Bottom Rod Replacement Kit

For use with 4500 Series Surface Vertical Rod exit device

- Finishes: US3, US4, US10, US10B, US26, US26D, US32D
- Packaging: One (1) each 45-1/4" (1149 mm) rod, rod guide, rod connector, and appropriate fasteners

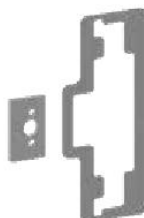


### 4929C

#### Concealed Rod Replacement Kit

For use with 4500 Series Concealed Vertical Rod exit device

- Material: Hardened aluminum
- Finishes: US26D
- Packaging: One (1) each 46-5/8" (1184 mm) rod, rod connector and appropriate fasteners



### 4930R

#### Shim Kit

For use with 4500 Series Rim exit devices where a glass bead kit would interfere with exit device

- Finishes: US3, US4, US10, US10B, US26, US26D, US32D
- Packaging: Two (2) each 1/8" (3 mm) shims and appropriate fasteners



### 4930S

#### Shim Kit

For use with 4500 Series Surface Vertical Rod exit devices where a glass bead kit would interfere with exit device

- Finishes: US3, US4, US10, US10B, US26, US26D, US32D
- Packaging: Two (2) each 1/8" (3 mm) shims and appropriate fasteners





## 4500 SERIES - ACCESSORIES



### 4932C

#### Head Cover

For use with 4500 Series Concealed Vertical Rod or Mortise exit devices

Finishes: US3, US4, US10, US10B, US26, US26D, US32D  
Packaging: One (1) head cover and four (4) each M4 x 6mm MS



### 4932R

#### Head Cover

For use with 4500 Series Rim exit device

Finishes: US3, US4, US10, US10B, US26, US26D, US32D  
Packaging: One (1) head cover and four (4) each M4 x 6mm MS



### 4932S

#### Head Cover

For use with 4500 Series Surface Vertical Rod exit devices

Finishes: US3, US4, US10, US10B, US26, US26D, US32D  
Packaging: One (1) head cover and four (4) each M4 x 6mm MS



### 4936

#### 24" Extension Rod Kit

For use with 4500 Series Vertical Rod exit devices

Finishes: US3, US4, US10, US10B, US26, US26D, US32D  
Packaging: One (1) each 24" (610 mm) extension rod, rod connector, rod guide, plus wood and machine screws  
Notes: Extension rods threaded on both ends; if cuts are required, cut the standard rod on non-threaded end



### 4937

#### 36" Extension Rod Kit

For use with 4500 Series Vertical Rod exit devices

Finishes: US3, US4, US10, US10B, US26, US26D, US32D  
Packaging: One (1) each 36" (914 mm) extension rod, rod connector, rod guide, plus wood and machine screws

Notes: Extension rod threaded on both ends; if cuts are required, cut the standard rod on non-threaded end



#### Standard



#### Flush

### END CAPS

For use with all 4500 and 4600 Series exit devices

Finishes:

	Standard	Flush
US3	(2-649-0038)	(2-649-0218)
US4	(2-649-0039)	(2-649-0220)
US10	(2-649-0040)	(2-649-0214)
US10B	(2-649-0041)	(2-649-0215)
US26	(2-649-0042)	(2-649-0216)
US26D	(2-649-0043)	(2-649-0217)
US32D	(2-649-0044)	(2-649-0219)

Packaging: One (1) each cap and bracket plus fasteners



### 2-649-0166

#### Fire Bolt Kit

For use with fire-rated 4500 Series Vertical Rod less bottom rod device

Faceplate: 1-25/32" x 1" (45 mm x 25 mm)  
Bolt Diameter: 7/16" (11 mm)  
Bolt Length: 1-1/2" (38 mm)  
Materials: Stainless steel  
Packaging: One (1) each fire bolt, plastic plug, head cover plug, and appropriate fasteners

Notes: Required with a fire-rated pair of LBR or LLB devices to ensure rating