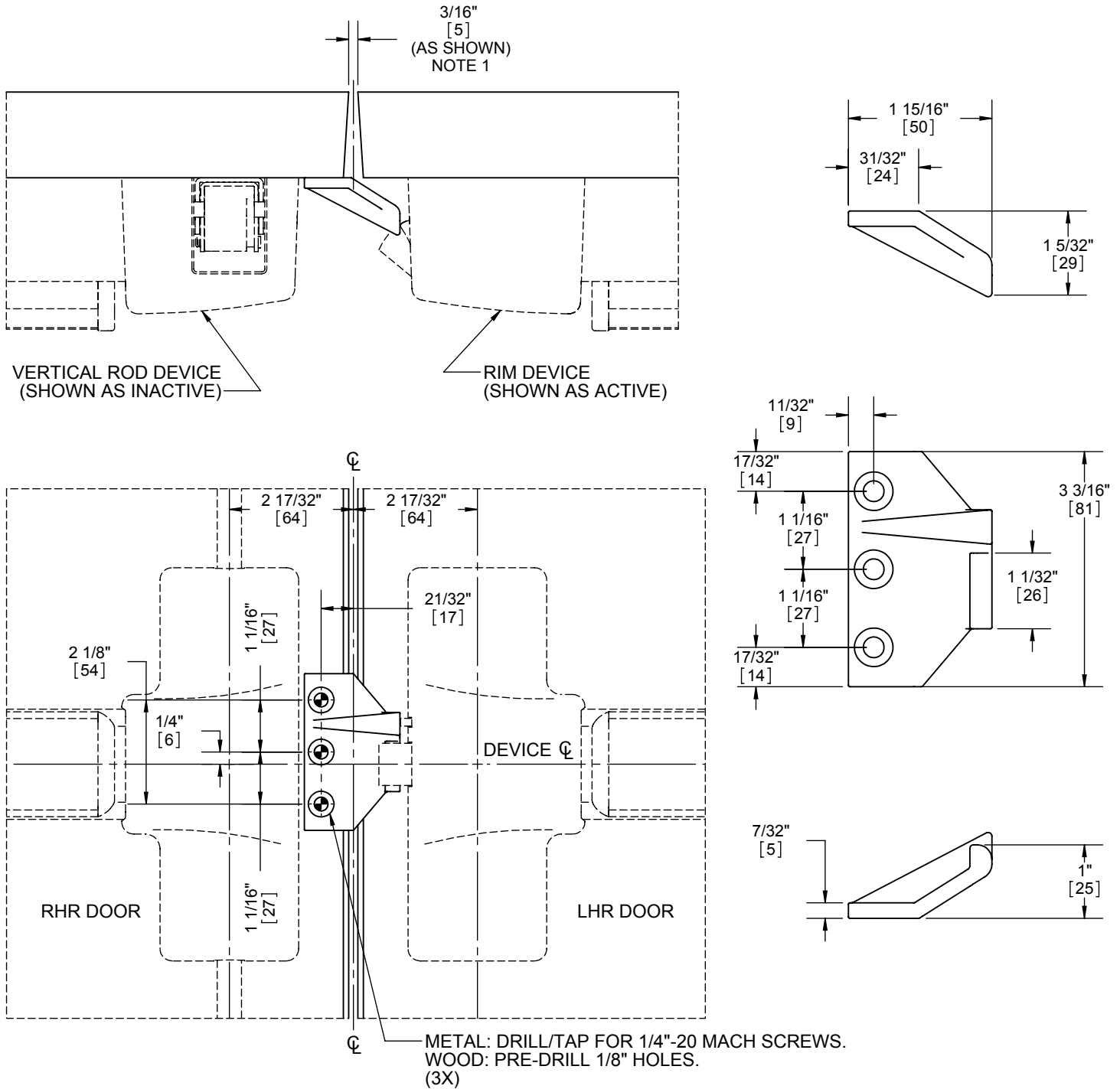


| REVISIONS | | |
|-----------|-------------|------|
| REV. | DESCRIPTION | DATE |



INSTRUCTIONS

- 1) IDENTIFY DOOR WITH SURFACE VERTICAL ROD EXIT DEVICE AND MARK DEVICE CENTERLINE IF IT IS NOT ALREADY MARKED ON THE DOOR.
- 2) USE EXIT DEVICE CENTERLINE AND DIMENSIONS SHOWN ON THIS PAGE TO MARK AND DRILL HOLES.
- 3) INSTALL DOUBLE DOOR STRIKE WITH PROVIDED SCREWS.

NOTES

1. STANDARD DOOR GAP IS 3/16" [4.8] \pm 1/16" [1.6]
2. 4921 DOUBLE DOOR STRIKE IS NOT FIRE DOOR RATED.
3. USE A COORDINATOR ON INACTIVE DOOR.



PROPRIETARY & CONFIDENTIAL

THE INFORMATION CONTAINED IN THIS DRAWING IS THE SOLE PROPERTY OF HAGER COMPANIES. ANY REPRODUCTION IN PART OR AS A WHOLE WITHOUT THE WRITTEN PERMISSION OF HAGER COMPANIES IS PROHIBITED.

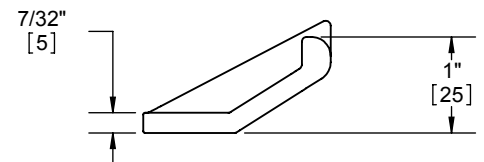
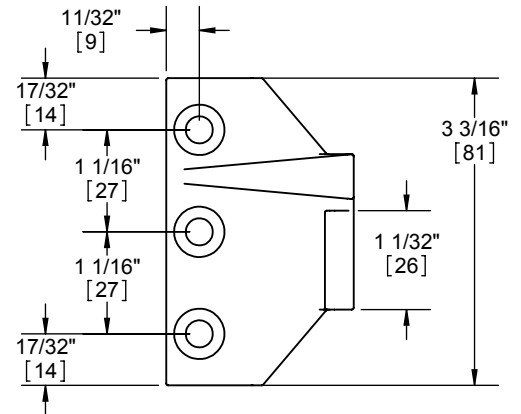
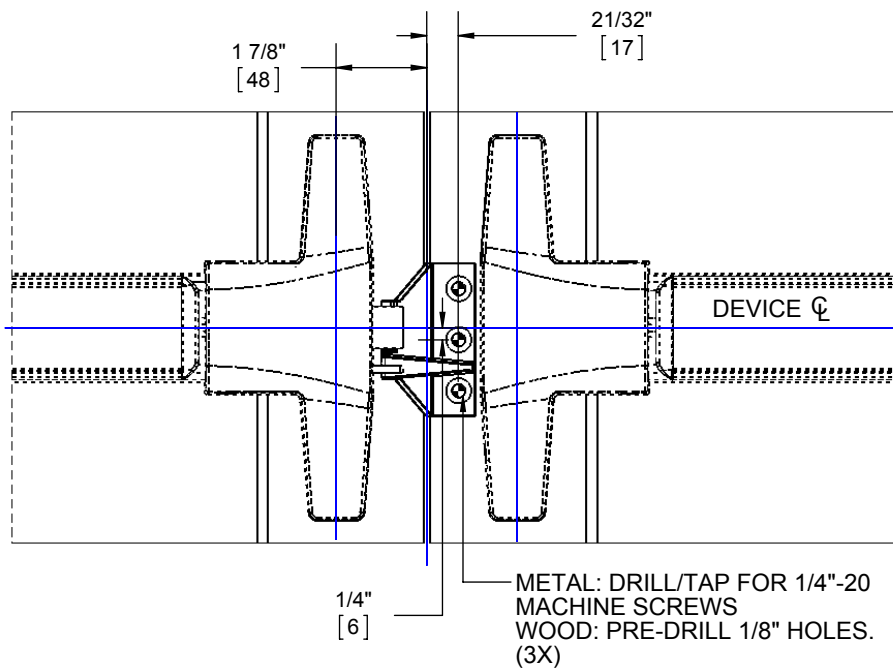
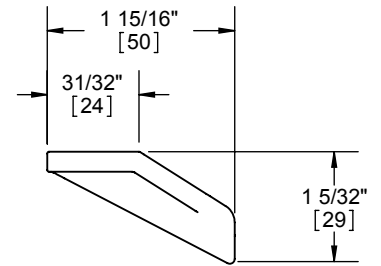
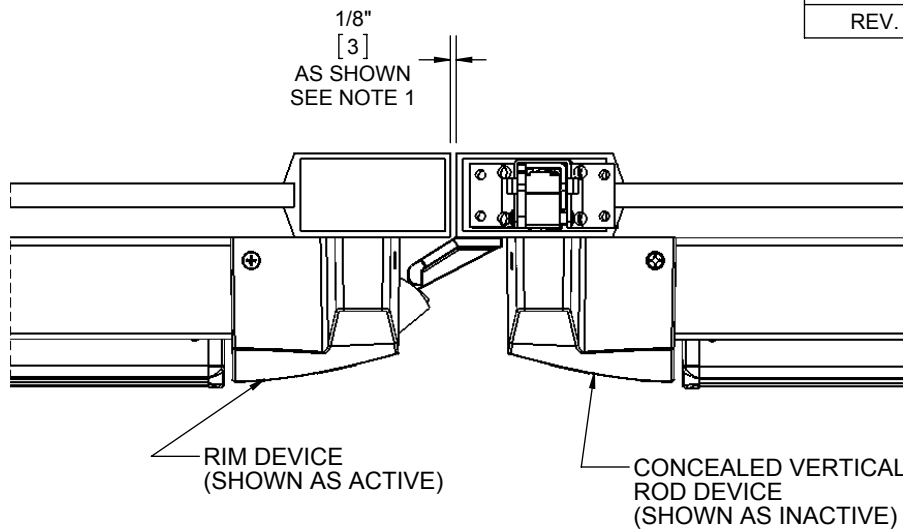
HAGER RESERVES THE RIGHT TO MAKE DESIGN CHANGES WITHOUT NOTICE. CALL HAGER ENGINEERING AT 1-800-325-9995 FOR THE LATEST REVISION DATE OF TEMPLATE.

| | |
|----------------------|--------------------------|
| MATERIAL | Material <not specified> |
| FINISH | - |
| DO NOT SCALE DRAWING | |

| | | |
|--|-----|--------|
| DRAWN | TJS | 8/7/07 |
| ENG. APPR. | - | - |
| Q.A. | | |
| TOLERANCES: | | |
| FRACTIONAL: \pm 0.015" | | |
| ANGULAR: MACH: \pm 1° BEND: \pm 1° | | |
| TWO PLACE DECIMAL: \pm 0.01" | | |
| THREE PLACE DECIMAL: \pm 0.004" | | |

| | | |
|---|----------------|--------------|
| 4921 | | |
| 4500 DOUBLE DOOR STRIKE INSTRUCTIONS & TEMPLATE | | |
| SIZE | DWG. NO. | REV. |
| A | T-ED00104 | 01 |
| SCALE: 1:24 | WEIGHT: 442.40 | SHEET 1 OF 1 |

| REVISIONS | | |
|-----------|-------------|------|
| REV. | DESCRIPTION | DATE |



INSTRUCTIONS

- 1) IDENTIFY DOOR WITH CONCEALED VERTICAL ROD EXIT DEVICE AND MARK DEVICE CENTERLINE IF IT IS NOT ALREADY MARKED ON THE DOOR.
- 2) USE EXIT DEVICE CENTERLINE AND DIMENSIONS SHOWN ON THIS PAGE TO MARK AND DRILL HOLES.
- 3) INSTALL DOUBLE DOOR STRIKE WITH PROVIDED SCREWS.
1. STANDARD DOOR GAP IS $1/8"$ $[3.2] \pm 1/16"$ $[1.6]$.
2. 4921 DOUBLE DOOR STRIKE IS NOT FIRE DOOR RATED.
3. USE A COORDINATOR ON INACTIVE DOOR.
4. 4600 CVR DOOR PREPARATION IS SHOWN IN TEMPLATE T-ED01311.
5. A 3-1/4" MINIMUM WIDTH STILE DOOR IS REQUIRED FOR THIS INSTALLATION.

NOTES



PROPRIETARY & CONFIDENTIAL

THE INFORMATION CONTAINED IN THIS DRAWING IS THE SOLE PROPERTY OF HAGER COMPANIES. ANY REPRODUCTION IN PART OR AS A WHOLE WITHOUT THE WRITTEN PERMISSION OF HAGER COMPANIES IS PROHIBITED.

HAGER RESERVES THE RIGHT TO MAKE DESIGN CHANGES WITHOUT NOTICE. CALL HAGER ENGINEERING AT 1-800-325-9995 FOR THE LATEST REVISION DATE OF TEMPLATE.

| | |
|----------------------|--------------------|
| MATERIAL | Plain Carbon Steel |
| FINISH | - |
| DO NOT SCALE DRAWING | |

| | | |
|--|-----|-----------|
| DRAWN | WJW | 1/11/2013 |
| ENG. APPR. | - | - |
| Q.A. | - | - |
| TOLERANCES: FRACTIONAL: $\pm 0.015"$ ANGULAR: MACH: $\pm 1^\circ$ BEND: $\pm 1^\circ$ TWO PLACE DECIMAL: $\pm 0.01"$ THREE PLACE DECIMAL: $\pm 0.004"$ | | |

| | | | |
|-------------|--------------|---|--|
| 4921 | | 4600 DOUBLE DOOR STRIKE INSTRUCTIONS & TEMPLATE | |
| SIZE | DWG. NO. | REV. | |
| A | T-ED01497 | -01+ | |
| SCALE: 1:24 | WEIGHT: 0.38 | SHEET 1 OF 1 | |