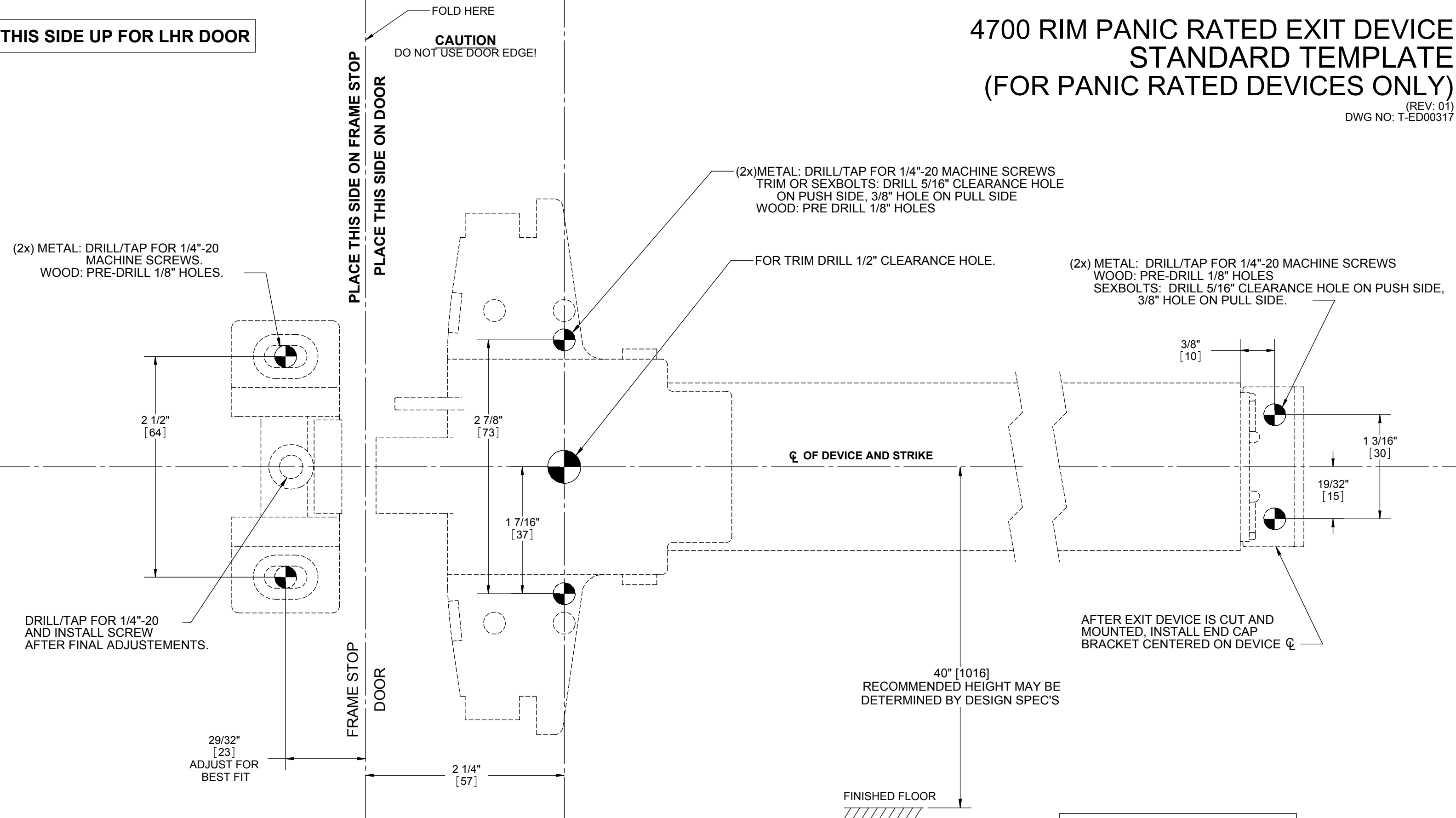


THIS SIDE UP FOR LHR DOOR

4700 RIM PANIC RATED EXIT DEVICE STANDARD TEMPLATE (FOR PANIC RATED DEVICES ONLY)

(REV: 01)
DWG NO: T-ED00317



 **HOLE LOCATIONS**
PRIMARY DIMENSIONS SHOWN IN INCHES,
DIMENSIONS IN [] ARE MILLIMETERS.



THIS SIDE UP FOR LHR DOOR

4700 RIM FIRE RATED EXIT DEVICE STANDARD TEMPLATE (FOR FIRE RATED DEVICES ONLY)

(REV: 01)
DWG NO: T-ED00266

SEE OTHER SIDE FOR MULLION TEMPLATE

(2x) METAL: DRILL/TAP FOR 1/4"-20
MACHINE SCREWS.
WOOD: PRE-DRILL 1/8" HOLES.

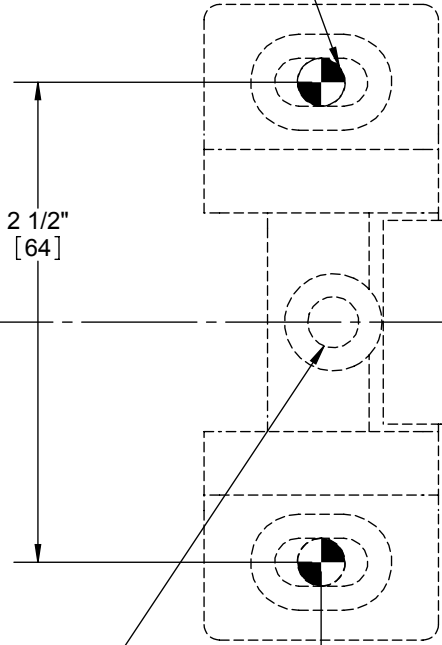
PLACE THIS SIDE ON FRAME STOP
PLACE THIS SIDE ON DOOR

FOLD HERE
CAUTION
DO NOT USE DOOR EDGE!

(2x)METAL: DRILL/TAP FOR 1/4"-20 MACHINE SCREWS
TRIM OR SEXBOLTS: DRILL 5/16" CLEARANCE HOLE
ON PUSH SIDE, 3/8" HOLE ON PULL SIDE
WOOD: PRE DRILL 1/8" HOLES

FOR TRIM DRILL 1/2" CLEARANCE HOLE.

(2x) METAL: DRILL/TAP FOR 1/4"-20 MACHINE SCREWS
WOOD: PRE-DRILL 1/8" HOLES
SEXBOLTS: DRILL 5/16" CLEARANCE HOLE ON PUSH SIDE,
3/8" HOLE ON PULL SIDE.



FRAME STOP
DOOR

29/32"
[23]
ADJUST FOR
BEST FIT

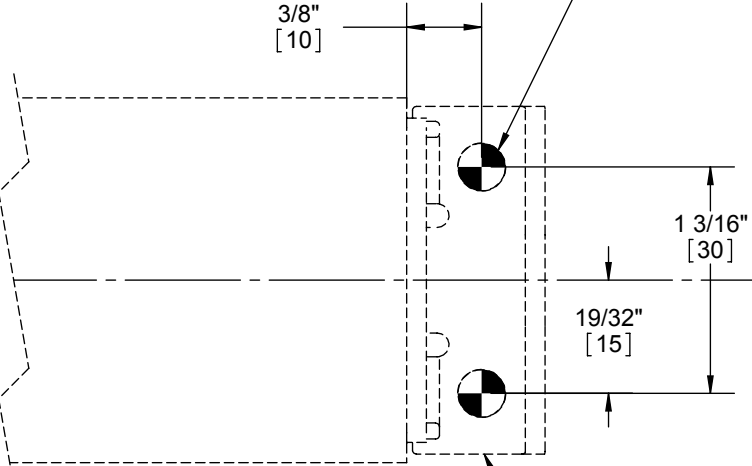
2 1/4"
[57]

2 7/8"
[73]

CL OF DEVICE AND STRIKE

40" [1016]
RECOMMENDED HEIGHT MAY BE
DETERMINED BY DESIGN SPEC'S

FINISHED FLOOR
////////



AFTER EXIT DEVICE IS CUT AND
MOUNTED, INSTALL END CAP
BRACKET CENTERED ON DEVICE CL



HOLE LOCATIONS

PRIMARY DIMENSIONS SHOWN IN INCHES,
DIMENSIONS IN [] ARE MILLIMETERS.

THIS SIDE UP FOR RHR DOOR



THIS SIDE UP FOR LHR DOOR

4700 RIM FIRE RATED EXIT DEVICE SEVERE WINDSTORM TEMPLATE (FOR FIRE RATED DEVICES ONLY)

(REV: 01)
DWG NO: T-ED00325

(2x) METAL: DRILL/TAP FOR 1/4"-20
MACHINE SCREWS.
WOOD: PRE-DRILL 1/8" HOLES.

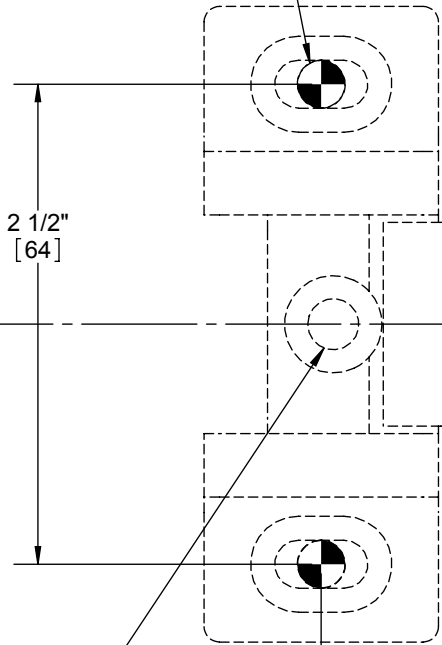
PLACE THIS SIDE ON FRAME STOP
PLACE THIS SIDE ON DOOR

FOLD HERE
CAUTION
DO NOT USE DOOR EDGE!

"A" LABELED HOLES:
METAL: DRILL/TAP FOR 1/4"-20 MACHINE SCREWS
FOR SEXBOLTS: DRILL 5/16" CLEARANCE HOLE
ON PUSH SIDE, 3/8" HOLE ON PULL SIDE

"B" LABELED HOLES:
METAL: DRILL/TAP FOR 1/4"-20 MACHINE SCREWS
FOR SEXBOLTS: DRILL 5/16" CLEARANCE HOLE
ON PUSH SIDE, 3/8" HOLE ON PULL SIDE
FOR TRIM: DRILL 5/16" CLEARANCE HOLES ON
ON PUSH SIDE, 1/2" HOLES ON PULL SIDE

(2x) METAL: DRILL/TAP FOR 1/4"-20 MACHINE SCREWS
WOOD: PRE-DRILL 1/8" HOLES
SEXBOLTS: DRILL 5/16" CLEARANCE HOLE ON PUSH SIDE,
3/8" HOLE ON PULL SIDE.



DRILL/TAP FOR 1/4"-20
AND INSTALL SCREW
AFTER FINAL ADJUSTEMENTS.

29/32"
[23]
ADJUST FOR
BEST FIT

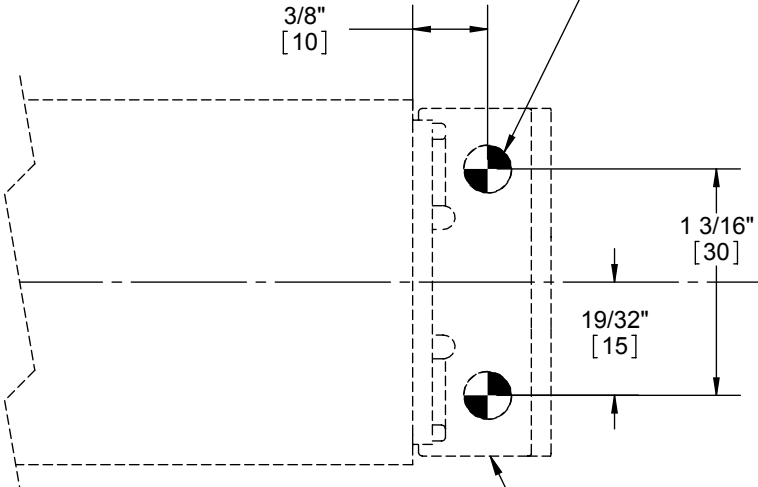
2 1/4"
[57]

FOR TRIM DRILL 1/2" CLEARANCE HOLE.

CL OF DEVICE AND STRIKE

40" [1016]
RECOMMENDED HEIGHT MAY BE
DETERMINED BY DESIGN SPEC'S

FINISHED FLOOR
////////



AFTER EXIT DEVICE IS CUT AND
MOUNTED, INSTALL END CAP
BRACKET CENTERED ON DEVICE CL



HOLE LOCATIONS

PRIMARY DIMENSIONS SHOWN IN INCHES,
DIMENSIONS IN [] ARE MILLIMETERS.

THIS SIDE UP FOR RHR DOOR

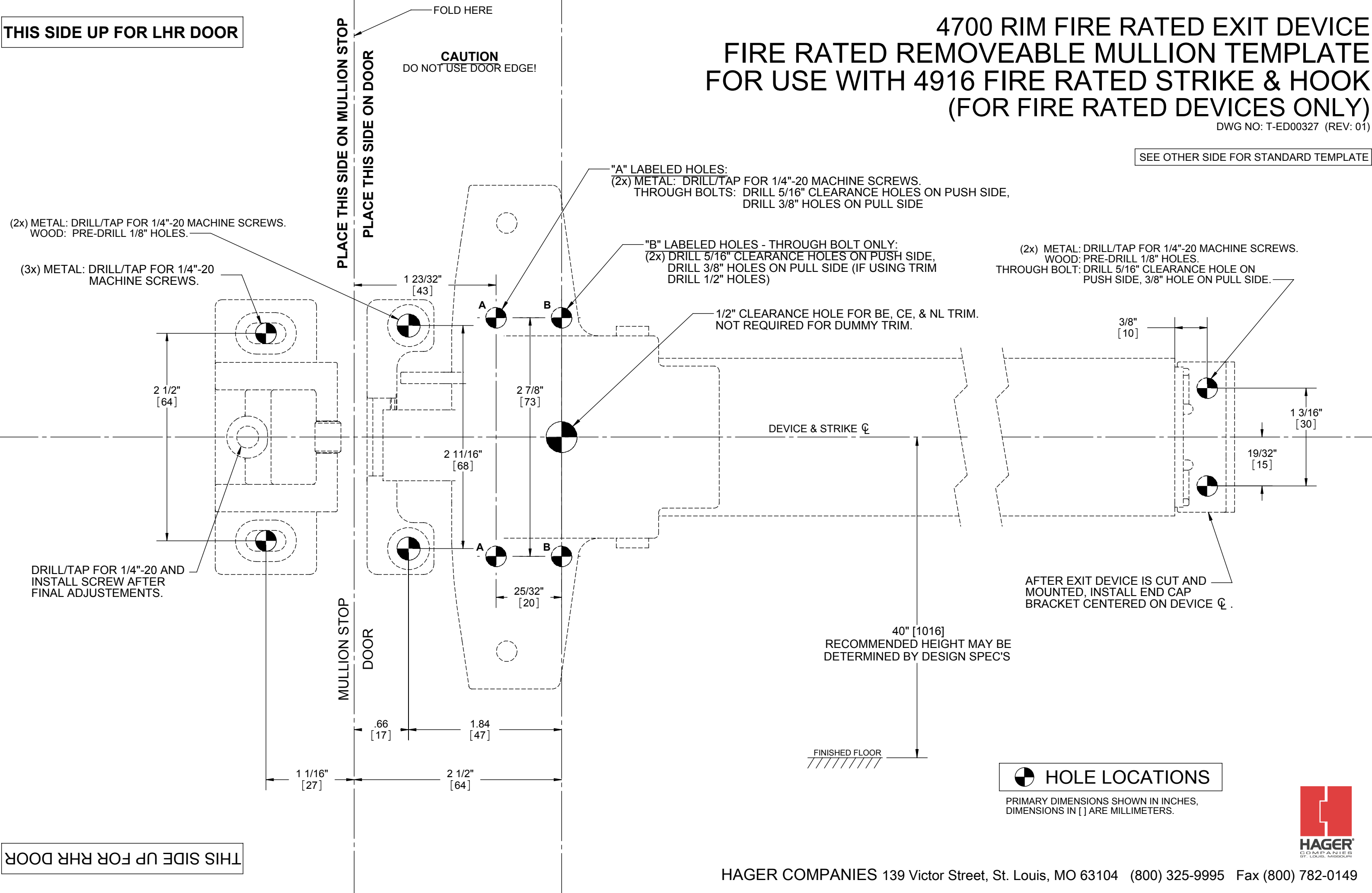


THIS SIDE UP FOR LHR DOOR

4700 RIM FIRE RATED EXIT DEVICE FIRE RATED REMOVEABLE MULLION TEMPLATE FOR USE WITH 4916 FIRE RATED STRIKE & HOOK (FOR FIRE RATED DEVICES ONLY)

DWG NO: T-ED00327 (REV: 01)

SEE OTHER SIDE FOR STANDARD TEMPLATE

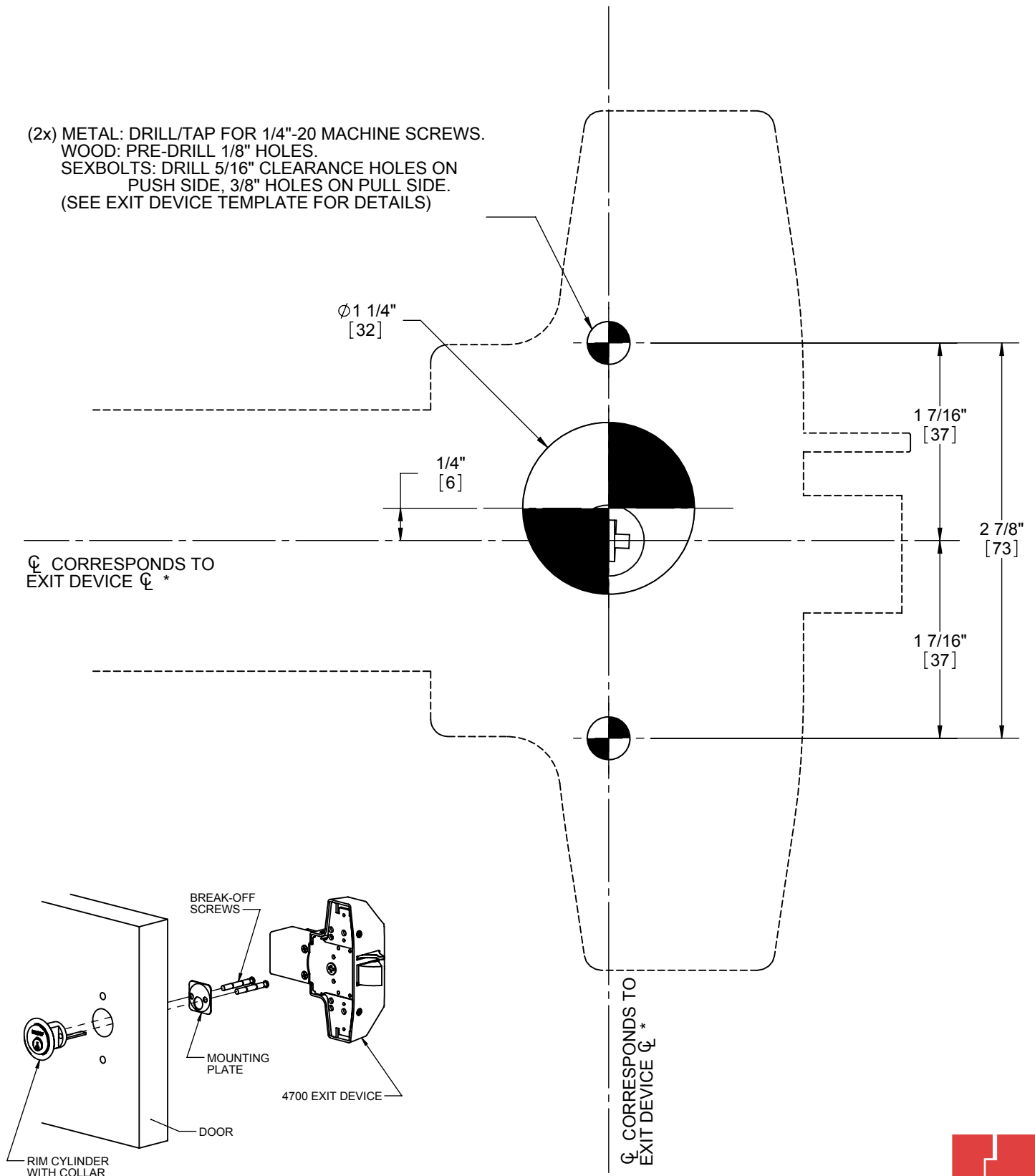


THIS SIDE UP FOR RHR DOOR



4700 EXIT DEVICE WITH RIM CYLINDER TEMPLATE

(2x) METAL: DRILL/TAP FOR 1/4"-20 MACHINE SCREWS.
WOOD: PRE-DRILL 1/8" HOLES.
SEXBOLTS: DRILL 5/16" CLEARANCE HOLES ON
PUSH SIDE, 3/8" HOLES ON PULL SIDE.
(SEE EXIT DEVICE TEMPLATE FOR DETAILS)



* SEE EXIT DEVICE INSTRUCTIONS
FOR ALIGNMENT DETAILS.

HOLE LOCATIONS

PRIMARY DIMENSIONS SHOWN IN INCHES.
DIMENSIONS IN [] ARE MILLIMETERS.

