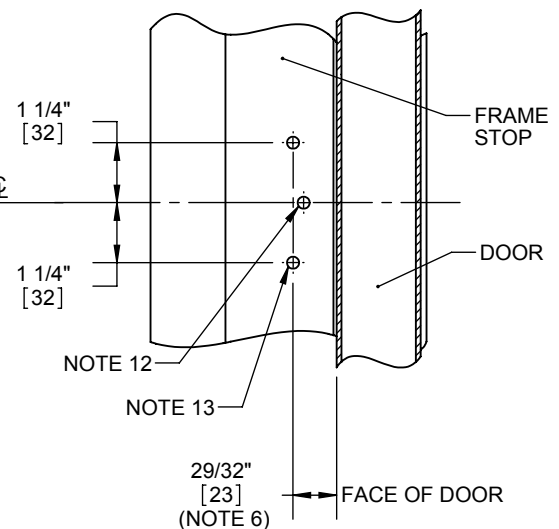
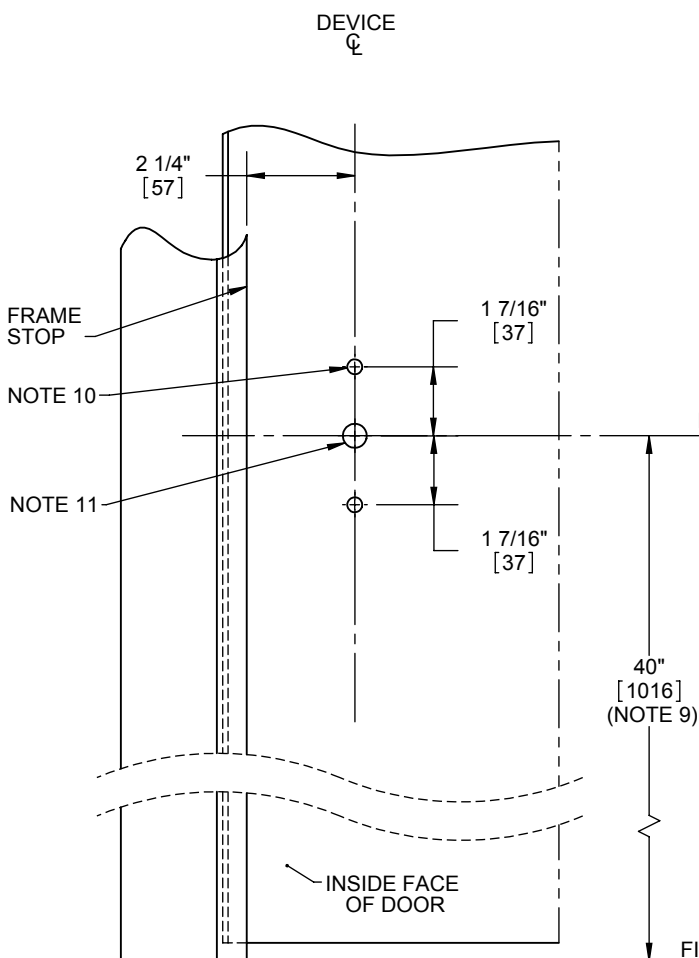
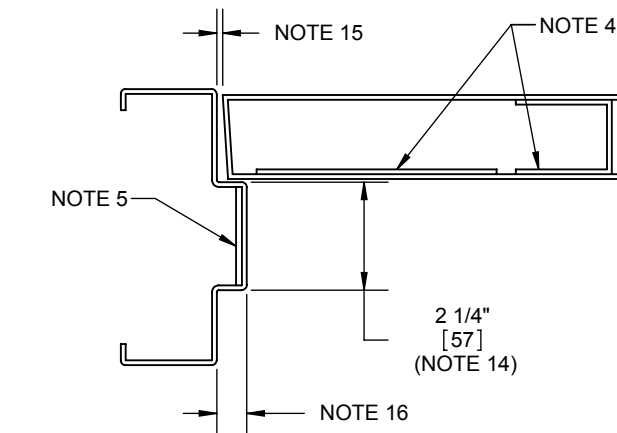


4700 RIM DEVICE DOOR PREP TEMPLATE APPLICATION FOR METAL AND WOOD DOORS (FOR PANIC AND FIRE RATED DEVICES)

NOTES:

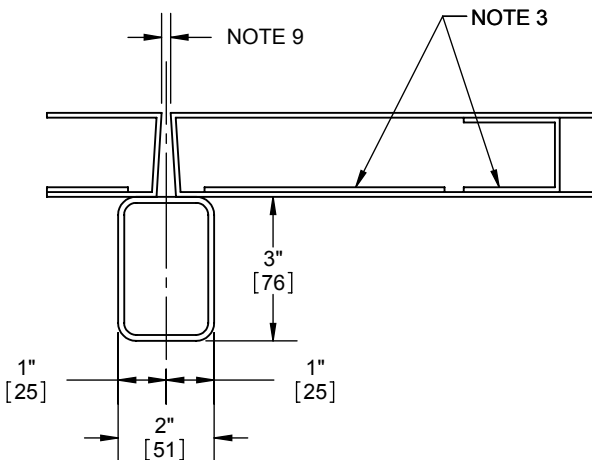
1. LHR door shown. Preparation is typical for both door hands.
2. Minimum Stile width:
 - 4 1/2" for double doors & SVR with double door strike.
 - 4 1/2" for single doors with standard 5/8" stop.
3. Prepare mounting holes when installing the device.
4. Provide door stiffeners as needed to prevent door collapse due to installation with power tools, door use, or abuse.
5. Provide frame stiffeners as needed for rim strike. Unreinforced frames require blind rivet nuts (by others) to mount the strike.
6. Dimension from door face.
7. Device mount (end cap bracket) to hinge stile (not shown) requires hole location and preparation during device installation.
8. For outside trim preparation see appropriate trim template.
9. Recommended height may be determined by design spec's.
10. Device mounting holes (2 places)
 - Metal door: 1/4"-20 Tap (std.).
 - Wood door (solid core): Pre-drill ϕ 1/8" holes.
 - SNB: ϕ 5/16" inside door face, ϕ 3/8" outside door face.
 - Trim: ϕ 5/16" inside door face, ϕ 1/2" outside door face.
 - Check building and fire codes to see if your application requires the use of SNB (sleeve nuts and bolts).
11. Trim Tailpiece hole:
 - For BE, CE & NL trim: ϕ 1/2" (thru hole)
 - Dummy trim: not required
12. This hole MUST be field located using physical part as template, after installation is complete and device is fully operational.
13. Strike mounting holes (2 places)
 - Metal Frame: 1/4"-20 Tap (std.).
 - Wood Frame: Pre-drill ϕ 1/8" holes.
14. 1-7/8" Minimum recommended (2-1/4" standard frame).
15. Per ANSI/SDI A250.8, single door is 1/8", pairs of doors 3/16" \pm 1/16", and fire rated pair 1/8" \pm 1/16". Consult design spec's before preparing doors.
16. 5/8" typical for hollow metal frames, 1/2" typical for wood frames. Consult design spec's before preparing doors.



**STRIKE PREPARATION
DETAIL**



4700 RIM DEVICE WITH 4900 MULLION DOOR PREP TEMPLATE APPLICATION FOR METAL AND WOOD DOORS (FOR PANIC AND FIRE RATED DEVICES)



NOTES:

1. Preparation is typical for both doors.
2. Minimum Stile width:
 - 5" for double doors with 2" mullion.
3. Provide door stiffeners as needed to prevent door collapse due to installation with power tools, door use, or abuse.
4. Device mount (end cap bracket) to hinge stile (not shown) requires hole location and preparation during device installation.
5. For outside trim preparation see appropriate trim template.
6. Recommended height may be determined by design spec's.
7. Device mounting holes (2 places)
 - Metal door: 1/4"-20 Tap (std.).
 - Wood door (solid core): Pre-drill $\phi 1/8"$ holes.
 - SNB: $\phi 5/16"$ inside door face, $\phi 3/8"$ outside door face.
 - Trim: $\phi 5/16"$ inside door face, $\phi 1/2"$ outside door face.
 - Check building and fire codes to see if your application requires the use of SNB (sleeve nuts and bolts).
8. Trim Tailpiece hole:
 - For BE, CE & NL trim: $\phi 1/2"$ (thru hole)
 - Dummy trim: not required
9. Per ANSI/SDI A250.8, pairs of doors $3/16" \pm 1/16"$, and fire rated pair $1/8" \pm 1/16"$. Consult design spec's before preparing doors.
10. Strike to be field mounted using exit device installation instructions.
11. Fire rated devices require 4916 Fire Rated Strike and Hook.
 - See template T-ED00327 for additional details

