

**THIS SIDE UP FOR
RHR DOOR
(RIGHT HAND REVERSE)**

CAUTION
DO NOT USE
DOOR EDGE

Ø0.27 THRU, ∇ Ø0.51 x 82°
COUNTERSUNK HOLE FOR
#10-24 MACHINE SCREWS

PLACE THIS SIDE ON FRAME STOP

PLACE THIS SIDE ON DOOR

DRILL $\phi 5/16"$ CLEARANCE HOLES ON PUSH SIDE,
DRILL $\phi 1/2"$ HOLES ON PULL SIDE.

DRILL $\phi 1/2"$ CLEARANCE HOLE ON PUSH SIDE,
DRILL $\phi 3/4"$ HOLE ON PULL SIDE.
(FOR NL TRIM SEE INSTRUCTIONS/TEMPLATES FOR DETAILS)

DRILL $\phi 5/16"$ CLEARANCE HOLE ON PUSH SIDE,
DRILL $\phi 3/8"$ HOLES ON PULL SIDE. \rightarrow

— AFTER EXIT DEVICE IS CUT & MOUNTED
INSTALL END CAP BRACKET CENTERED
ON DEVICE CENTERLINE.

40" [1016]
RECOMMENDED HEIGHT MAY BE
DETERMINED BY DESIGN SPEC'S

FINISHED FLOOR

HAGER COMPANIES 139 Victor Street, St. Louis, MO 63104 - (800) 325-9995 - Fax (800) 782-0149	
---	--

B. HOLE LOCATIONS IDENTIFIED BY THE ☉
C. PRIMARY DIMENSIONS SHOWN IN INCHES,
DIMENSIONS IN [] ARE MILLIMETERS.

NOTE A-

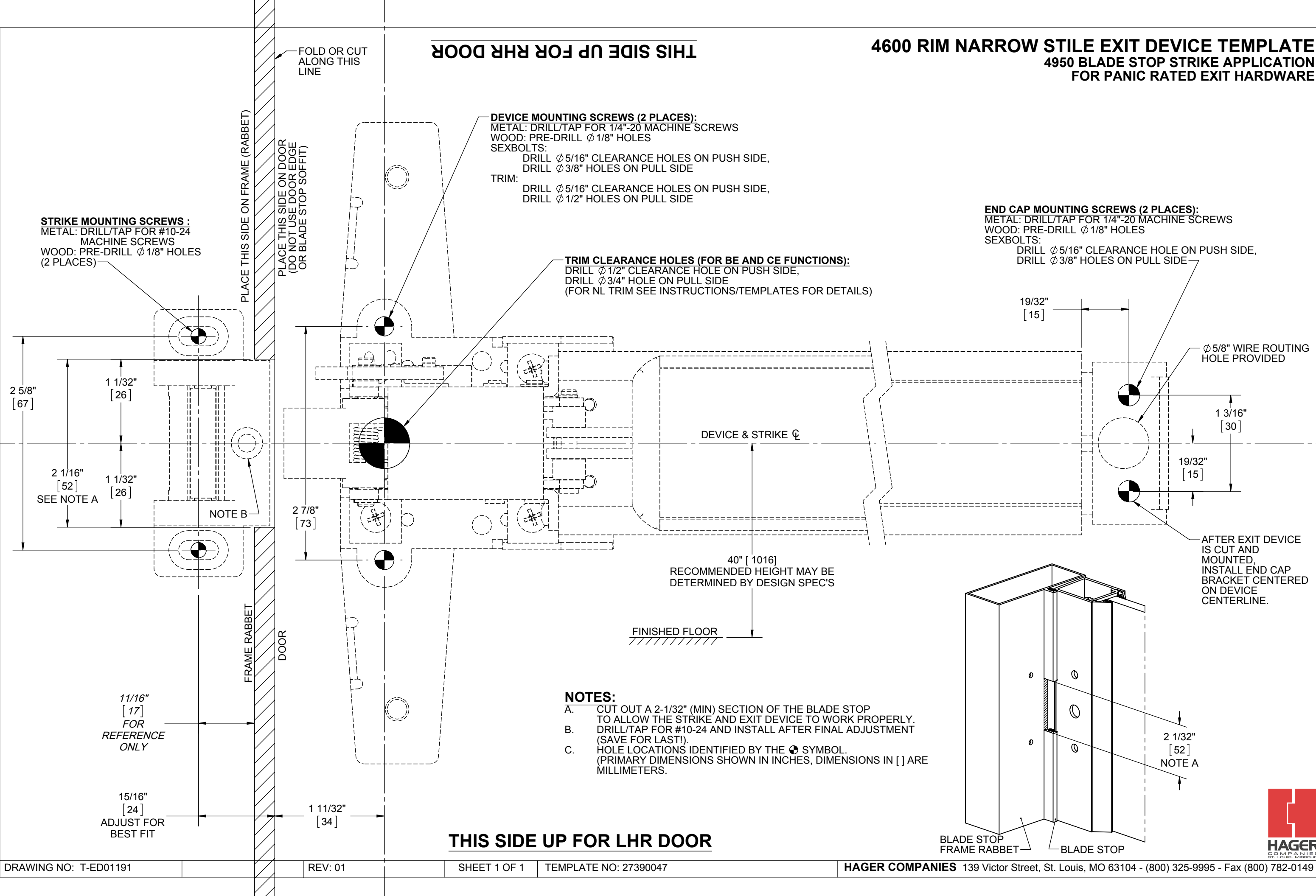
FRAME—
STOP

DOOR
STILE



THIS SIDE UP FOR RHR DOOR

4600 RIM NARROW STILE EXIT DEVICE TEMPLATE
4950 BLADE STOP STRIKE APPLICATION
FOR PANIC RATED EXIT HARDWARE



THIS SIDE UP FOR RHR DOOR

4600 RIM NARROW STILE EXIT DEVICE TEMPLATE

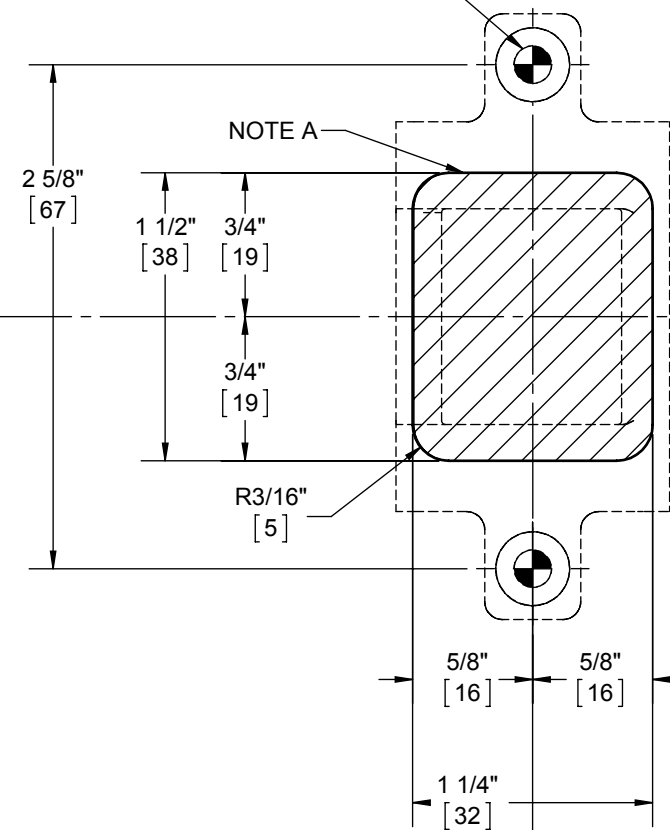
4952 SEMI-FLUSH STRIKE APPLICATION
FOR PANIC RATED EXIT HARDWARE

FOLD OR CUT
ALONG THIS LINE

CAUTION
DO NOT USE
DOOR EDGE

PLACE THIS SIDE ON FRAME OR MULLION STOP
PLACE THIS SIDE ON DOOR

STRIKE MOUNTING SCREWS :
METAL: DRILL/TAP FOR #10-24
MACHINE SCREWS
WOOD: PRE-DRILL ϕ 1/8" HOLES
(2 PLACES)



DEVICE MOUNTING SCREWS (2 PLACES):
METAL: DRILL/TAP FOR 1/4"-20 MACHINE SCREWS
WOOD: PRE-DRILL ϕ 1/8" HOLES
SEXBOLTS:

DRILL ϕ 5/16" CLEARANCE HOLES ON PUSH SIDE,
DRILL ϕ 3/8" HOLES ON PULL SIDE

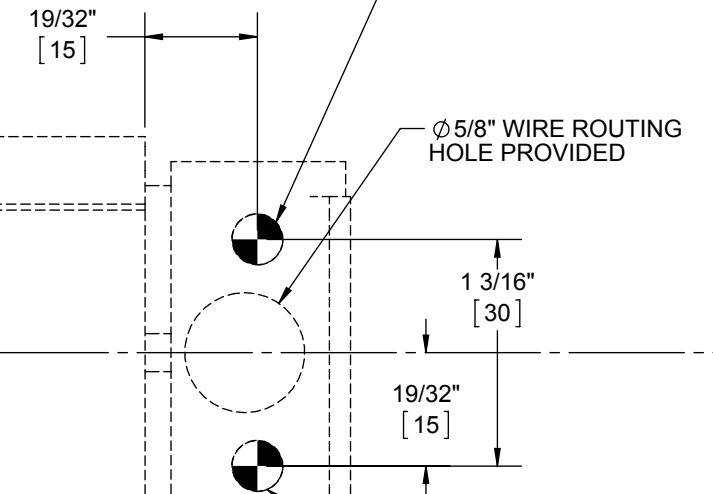
TRIM:

DRILL ϕ 5/16" CLEARANCE HOLES ON PUSH SIDE,
DRILL ϕ 1/2" HOLES ON PULL SIDE

TRIM CLEARANCE HOLES (FOR BE AND CE FUNCTIONS):
DRILL ϕ 1/2" CLEARANCE HOLE ON PUSH SIDE,
DRILL ϕ 3/4" HOLE ON PULL SIDE
(FOR NL TRIM SEE INSTRUCTIONS/TEMPLATES FOR DETAILS)

END CAP MOUNTING SCREWS (2 PLACES):
METAL: DRILL/TAP FOR 1/4"-20 MACHINE SCREWS
WOOD: PRE-DRILL ϕ 1/8" HOLES
SEXBOLTS:

DRILL ϕ 5/16" CLEARANCE HOLE ON PUSH SIDE,
DRILL ϕ 3/8" HOLES ON PULL SIDE



ϕ 5/8" WIRE ROUTING
HOLE PROVIDED

AFTER EXIT DEVICE IS CUT
AND MOUNTED,
INSTALL END CAP
BRACKET CENTERED ON
DEVICE CENTERLINE.

DEVICE & STRIKE ϕ

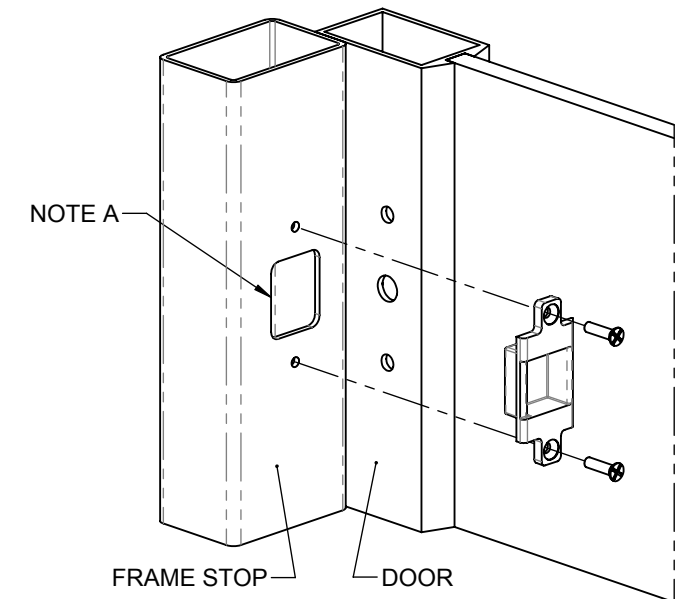
40" [1016]
RECOMMENDED HEIGHT MAY BE
DETERMINED BY DESIGN SPEC'S

FINISHED FLOOR

NOTES:

- A. THE SEMI-FLUSH STRIKE REQUIRES A 1-1/2" TALL X 1-1/4" WIDE CUTOUT IN THE FRAME OR MULLION.
B. HOLE LOCATIONS IDENTIFIED BY THE ϕ SYMBOL.
(PRIMARY DIMENSIONS SHOWN IN INCHES, DIMENSIONS IN [] ARE MILLIMETERS.)

THIS SIDE UP FOR LHR DOOR



4600 RIM NARROW STILE EXIT DEVICE TEMPLATE
4920 AND 4920F STANDARD STRIKE APPLICATION
FOR PANIC AND FIRE RATED EXIT HARDWARE

