

NOTES:

1. DIMENSION "Y" IS A VARIABLE DEPENDING ON DOOR THICKNESS.
2. STRIKE LOCATION MUST BE CHANGED RELATIVE TO THICKNESS OF DOOR SILENCER OR WEATHERSTRIPPING WHEN USED.



HAGER RESERVES THE RIGHT TO MAKE DESIGN CHANGES WITHOUT NOTICE. CALL HAGER ENGINEERING AT 1-800-325-9995 FOR THE LATEST REVISION DATE OF TEMPLATE.

PRIMARY DIMENSIONS SHOWN IN INCHES, DIMENSIONS IN [] ARE MILLIMETERS.

MATERIAL
Material <not specified>

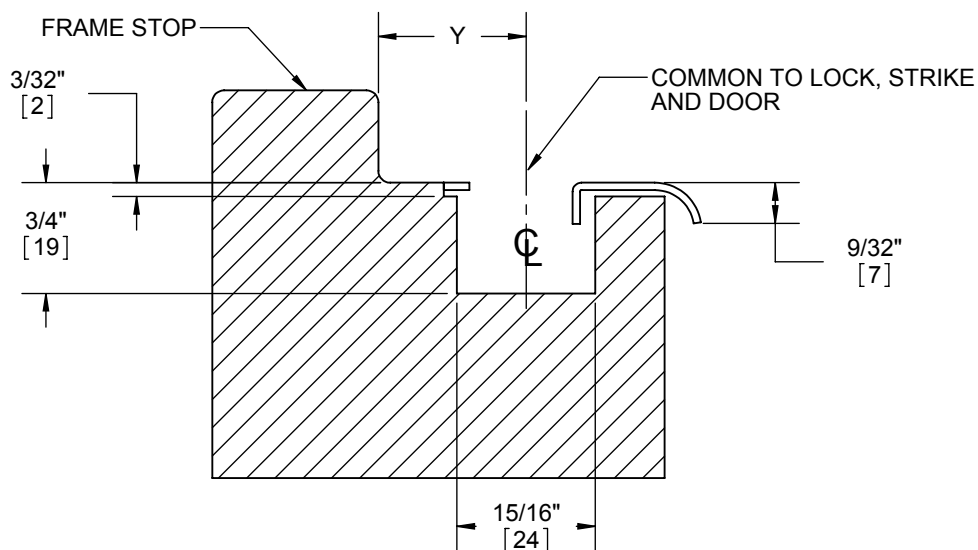
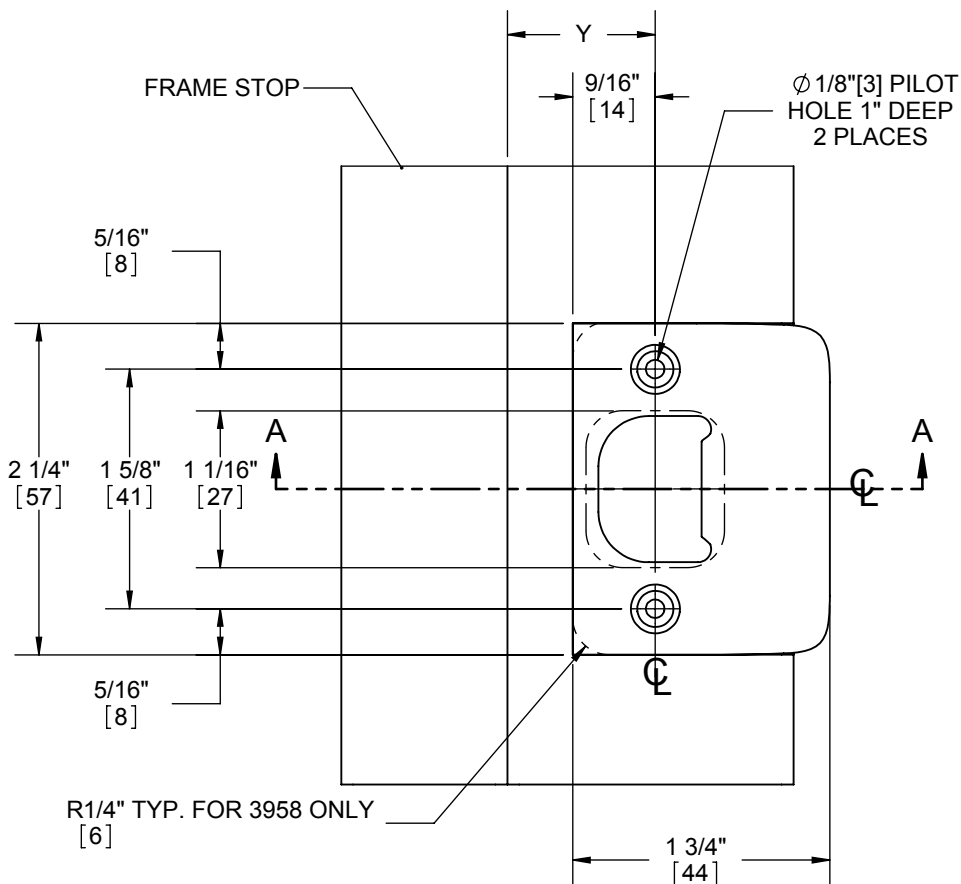
FINISH
-

DO NOT SCALE DRAWING

DRAWN	MRJ	12/10/2007
ENG. APPR.	-	-
Q.A.		
TOLERANCES:		
FRACTIONAL: ±0.015"		
ANGULAR: MACH: ±1° BEND: ±1°		
TWO PLACE DECIMAL: ±0.01"		
THREE PLACE DECIMAL: ±0.004"		

3933
**WOOD JAMB TEMPLATE FOR 2500,
3400, 3500, AND 3600 SERIES
LOCKSETS**

SIZE A	DWG. NO. T-LS00162	REV. 04
SCALE: 1:2	WEIGHT: 2.07	SHEET 1 OF 1



SECTION A-A

NOTES:

1. DIMENSION "Y" IS A VARIABLE DEPENDING ON DOOR THICKNESS.
2. STRIKE LOCATION MUST BE CHANGED RELATIVE TO THICKNESS OF DOOR SILENCER OR WEATHERSTRIPPING WHEN USED.



HAGER RESERVES THE RIGHT TO MAKE DESIGN CHANGES WITHOUT NOTICE. CALL HAGER ENGINEERING AT 1-800-325-9995 FOR THE LATEST REVISION DATE OF TEMPLATE.

PRIMARY DIMENSIONS SHOWN IN INCHES, DIMENSIONS IN [] ARE MILLIMETERS.

MATERIAL
Material <not specified>

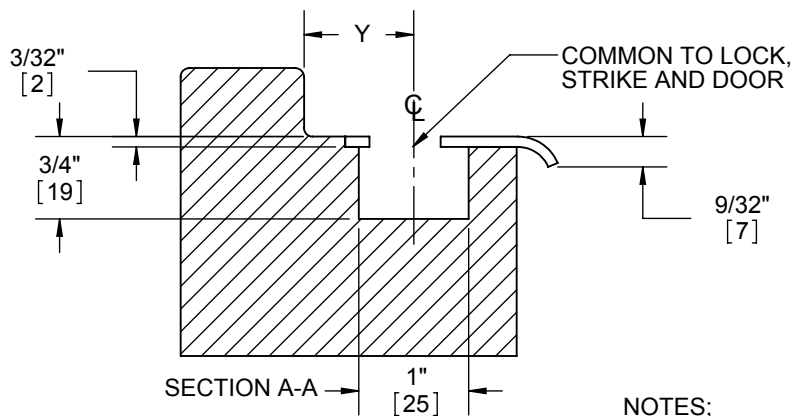
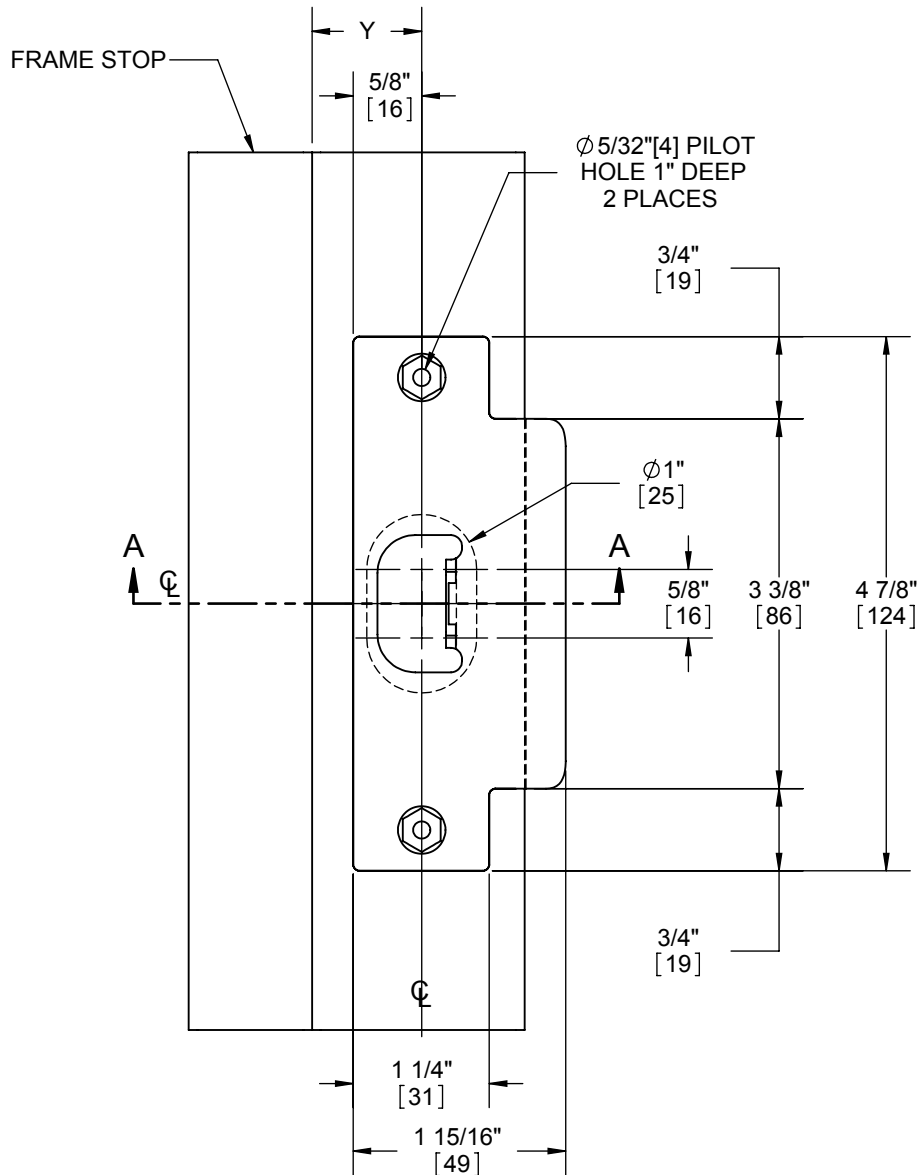
FINISH
-

DO NOT SCALE DRAWING

DRAWN	MRJ	12/10/2007
ENG. APPR.	-	-
Q.A.		
TOLERANCES:		
FRACTIONAL: $\pm 0.015"$		
ANGULAR: MACH: $\pm 1^\circ$ BEND: $\pm 1^\circ$		
TWO PLACE DECIMAL: $\pm 0.01"$		
THREE PLACE DECIMAL: $\pm 0.004"$		

3934 / 3958
WOOD JAMB TEMPLATE FOR 2500,
3400, 3500, AND 3600 SERIES LOCKS

SIZE A	DWG. NO. T-LS00163	REV. 03
SCALE: 1:2	WEIGHT: 2.00	SHEET 1 OF 1



NOTES:

1. DIMENSION "Y" IS A FUNCTION OF DOOR THICKNESS.
2. STRIKE LOCATION MUST BE CHANGED RELATIVE TO THICKNESS OF DOOR SILENCER OR WEATHERSTRIPPING WHEN USED.



HAGER RESERVES THE RIGHT TO MAKE DESIGN CHANGES WITHOUT NOTICE. CALL HAGER ENGINEERING AT 1-800-325-9995 FOR THE LATEST REVISION DATE OF TEMPLATE.

PRIMARY DIMENSIONS SHOWN IN INCHES, DIMENSIONS IN [] ARE MILLIMETERS.

MATERIAL
Material <not specified>

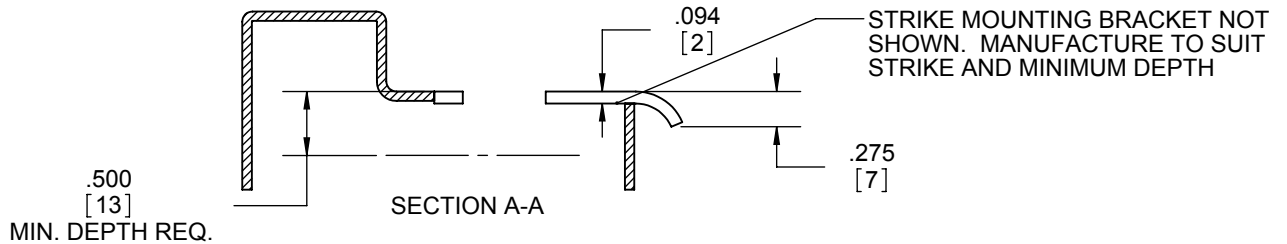
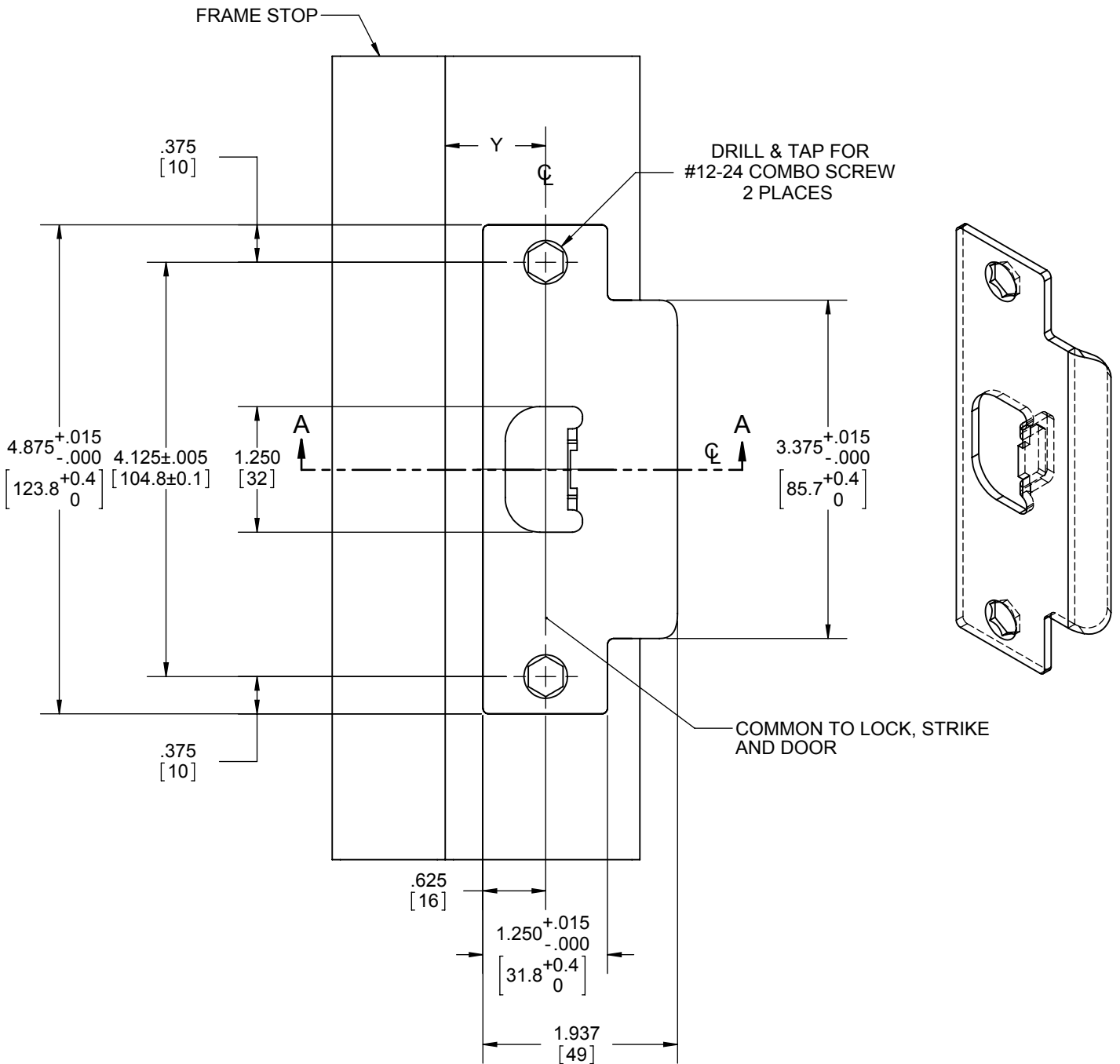
FINISH
-

DO NOT SCALE DRAWING

DRAWN	MRJ	12/11/2007
ENG. APPR.	-	-
Q.A.		
TOLERANCES:		
FRACTIONAL: $\pm 0.015"$		
ANGULAR: MACH: $\pm 1^\circ$ BEND: $\pm 1^\circ$		
TWO PLACE DECIMAL: $\pm 0.01"$		
THREE PLACE DECIMAL: $\pm 0.004"$		

3935
WOOD JAMB TEMPLATE FOR 2500,
3400, 3500, AND 3600 SERIES LOCKS

SIZE A	DWG. NO. T-LS00166	REV. 02
SCALE: 1:2	WEIGHT: 2.11	SHEET 1 OF 1



NOTES:

1. DIMENSION "Y" IS A FUNCTION OF DOOR THICKNESS
2. STRIKE LOCATION MUST BE CHANGED RELATIVE TO THICKNESS OF DOOR SILENCER OR WEATHERSTRIPPING WHEN USED.



HAGER RESERVES THE RIGHT TO MAKE DESIGN CHANGES WITHOUT NOTICE. CALL HAGER ENGINEERING AT 1-800-325-9995 FOR THE LATEST REVISION DATE OF TEMPLATE.

PRIMARY DIMENSIONS SHOWN IN INCHES, DIMENSIONS IN [] ARE MILLIMETERS.

MATERIAL
Material <not specified>

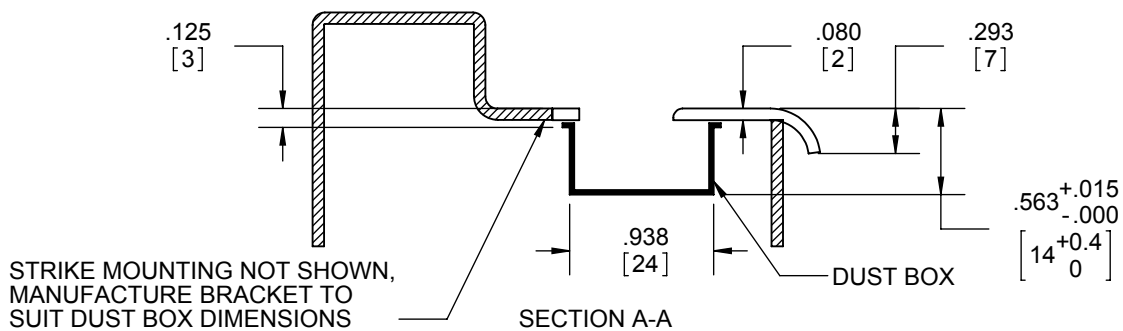
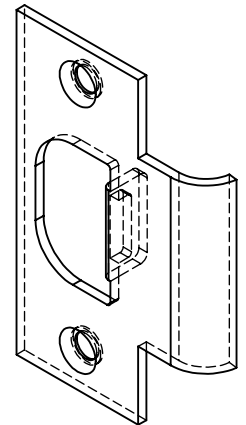
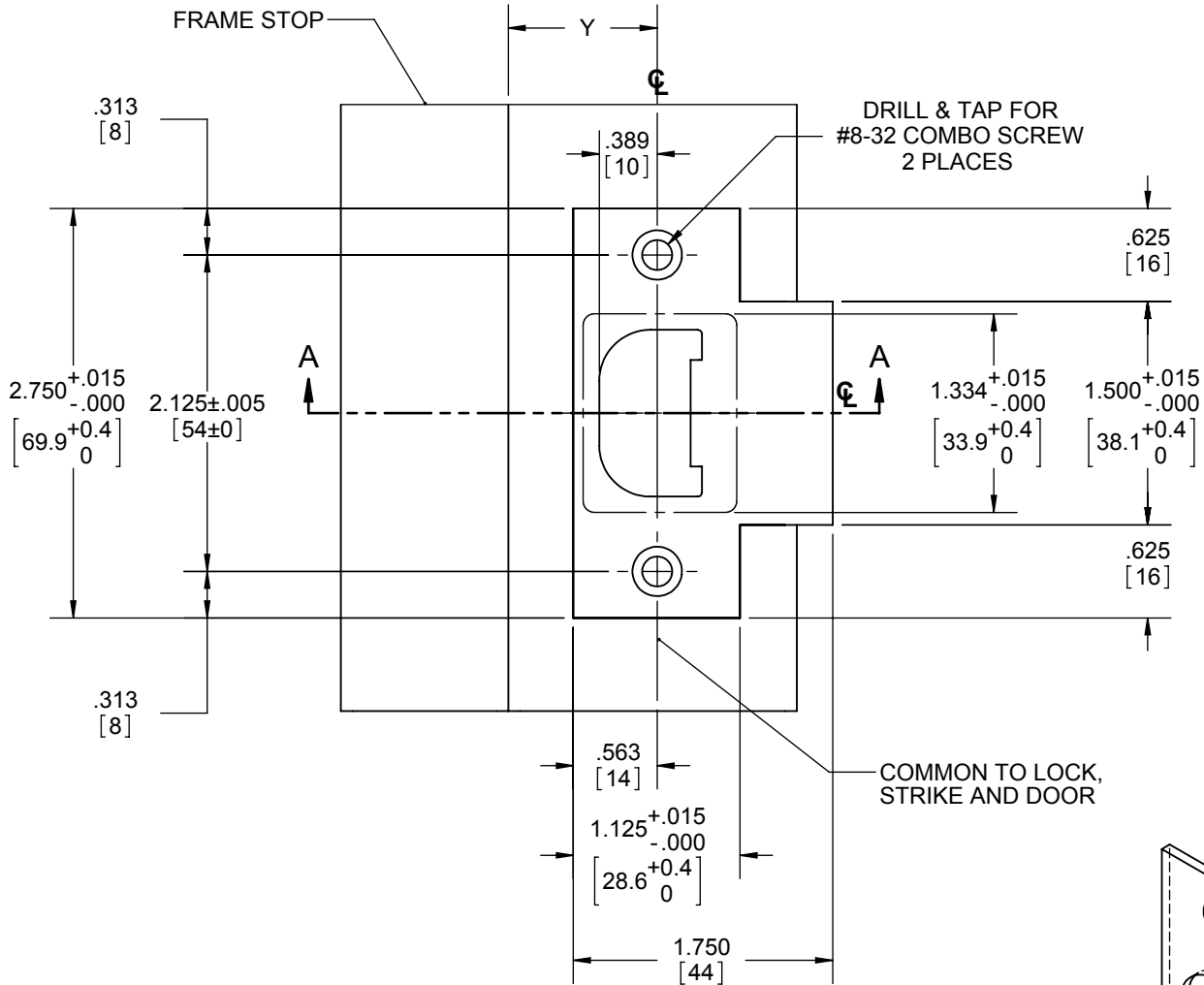
FINISH

DO NOT SCALE DRAWING

DRAWN	MRJ	12/11/2007
ENG. APPR.	-	-
Q.A.		
TOLERANCES:		
FRACTIONAL: ±0.015"		
ANGULAR: MACH: ±1° BEND: ±1°		
TWO PLACE DECIMAL: ±0.01"		
THREE PLACE DECIMAL: ±0.004"		

3935
METAL JAMB TEMPLATE FOR 2500, 3400, 3500, AND 3600 SERIES LOCKS

SIZE	DWG. NO.	REV.
A	T-LS00176	04
SCALE: 1:2	WEIGHT: 0.30	SHEET 1 OF 1



NOTES:

1. DIMENSION "Y" IS A FUNCTION OF DOOR THICKNESS.
2. STRIKE LOCATION MUST BE CHANGED RELATIVE TO THICKNESS OF DOOR SILENCER OR WEATHERSTRIPPING WHEN USED.



HAGER RESERVES THE RIGHT TO MAKE DESIGN CHANGES WITHOUT NOTICE. CALL HAGER ENGINEERING AT 1-800-325-9995 FOR THE LATEST REVISION DATE OF TEMPLATE.

PRIMARY DIMENSIONS SHOWN IN INCHES, DIMENSIONS IN [] ARE MILLIMETERS.

MATERIAL
Material <not specified>

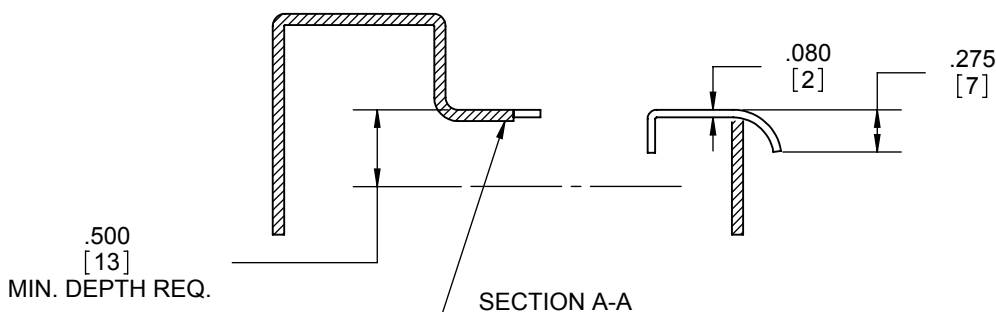
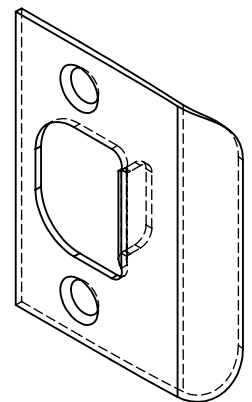
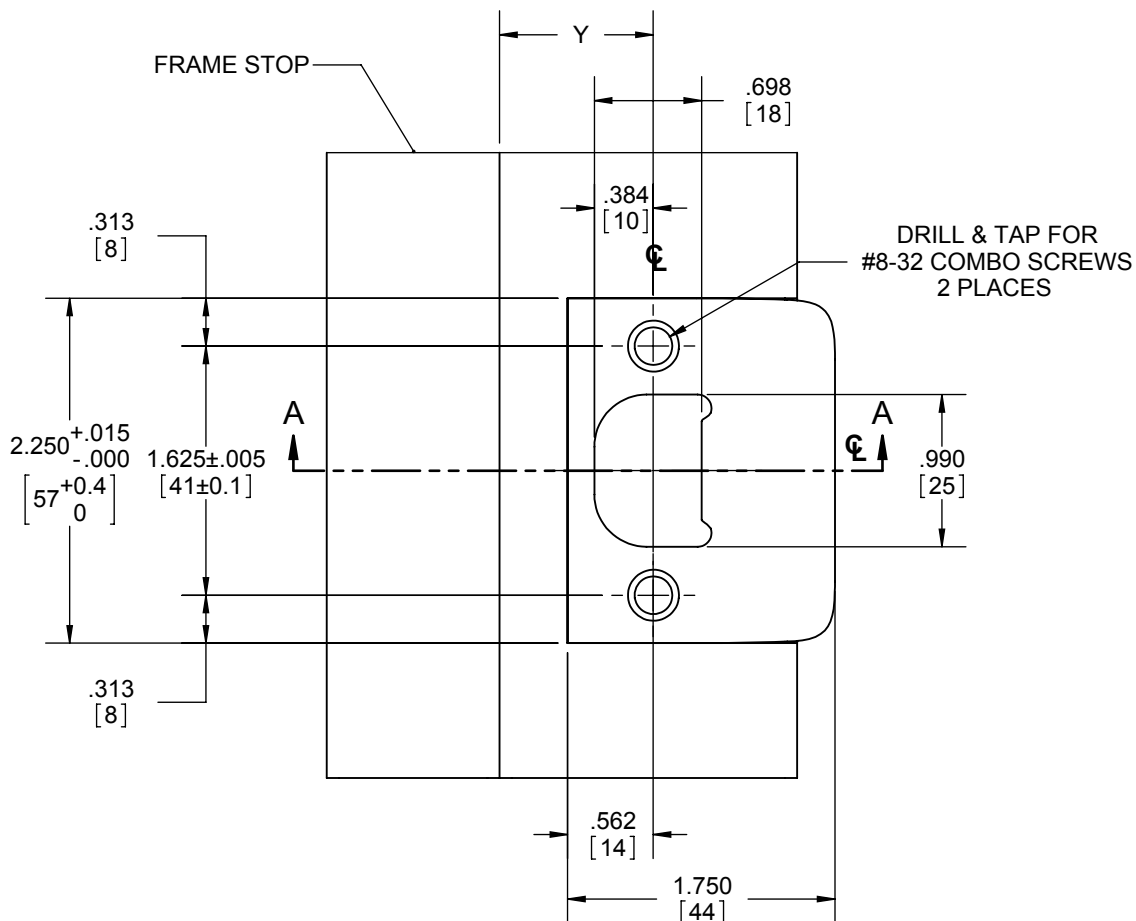
FINISH
-

DO NOT SCALE DRAWING

DRAWN	MRJ	12/10/2007
ENG. APPR.	-	-
Q.A.		
TOLERANCES:		
FRACTIONAL: ±0.015"		
ANGULAR: MACH: ± 1° BEND: ± 1°		
TWO PLACE DECIMAL: ±0.01"		
THREE PLACE DECIMAL: ±0.004"		

3933
METAL JAMB TEMPLATE FOR 2500, 3400, 3500, AND 3600 SERIES LOCKS

SIZE A	DWG. NO. T-LS00178	REV. 04
SCALE: 1:2	WEIGHT: 0.26	SHEET 1 OF 1



STRIKE MOUNTING NOT SHOWN,
MANUFACTURE BRACKET TO SUIT
STRIKE AND MINIMUM DEPTH

NOTES:

1. DIMENSION "Y" IS A FUNCTION OF DOOR THICKNESS.
2. STRIKE LOCATION MUST BE CHANGED RELATIVE TO THICKNESS OF DOOR SILENCER OR WEATHERSTRIPPING WHEN USED.



HAGER RESERVES THE RIGHT TO MAKE DESIGN CHANGES WITHOUT NOTICE. CALL HAGER ENGINEERING AT 1-800-325-9995 FOR THE LATEST REVISION DATE OF TEMPLATE.

PRIMARY DIMENSIONS SHOWN IN INCHES, DIMENSIONS IN [] ARE MILLIMETERS.

MATERIAL
Material <not specified>

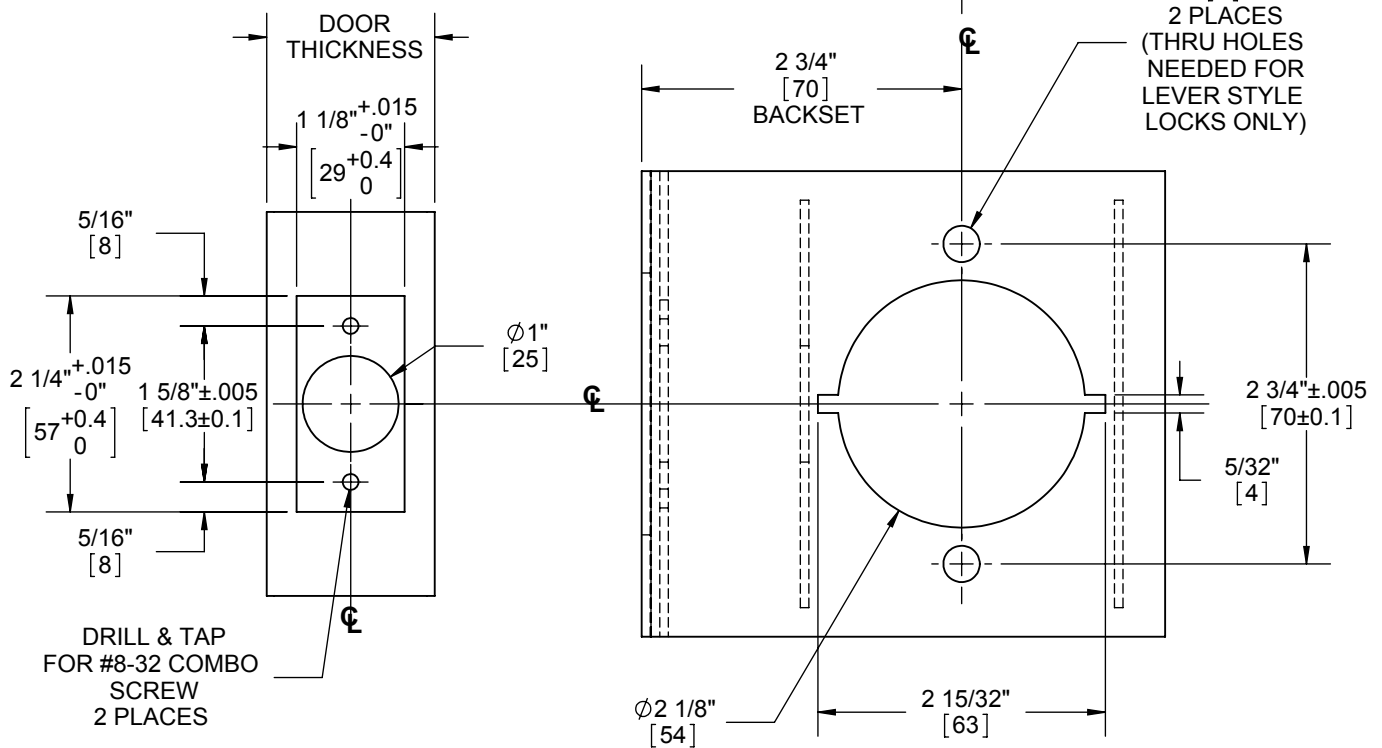
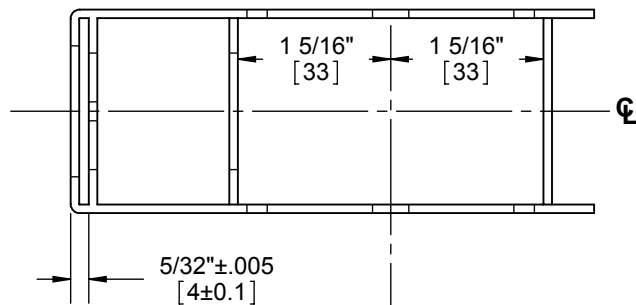
FINISH
-

DO NOT SCALE DRAWING

DRAWN	MRJ	12/10/2007
ENG. APPR.	-	-
Q.A.		
TOLERANCES:		
FRACTIONAL: $\pm 0.015"$		
ANGULAR: MACH: $\pm 1^\circ$ BEND: $\pm 1^\circ$		
TWO PLACE DECIMAL: $\pm 0.01"$		
THREE PLACE DECIMAL: $\pm 0.004"$		

3934
METAL JAMB TEMPLATE FOR 2500,
3400, 3500, AND 3600 SERIES LOCKS

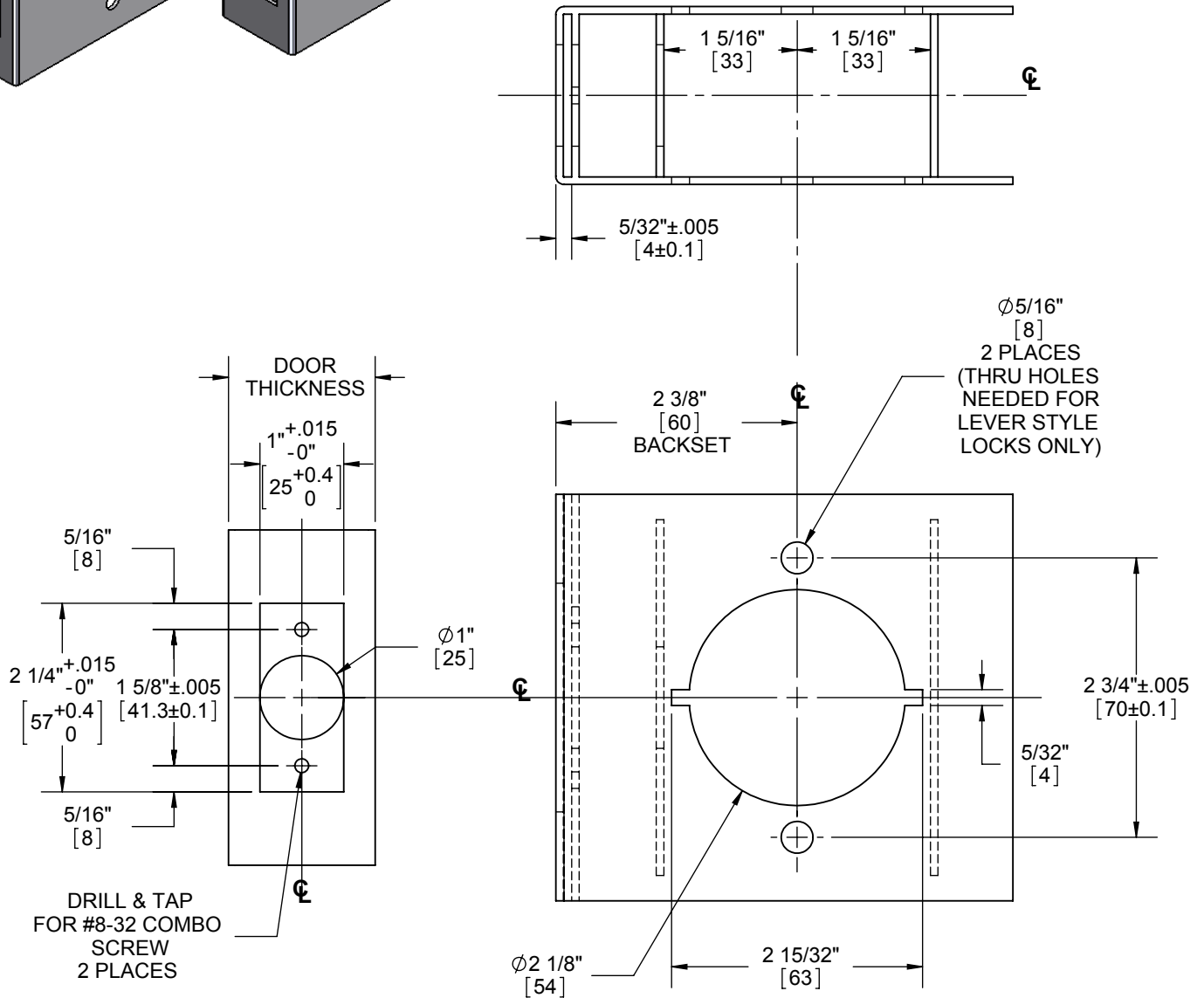
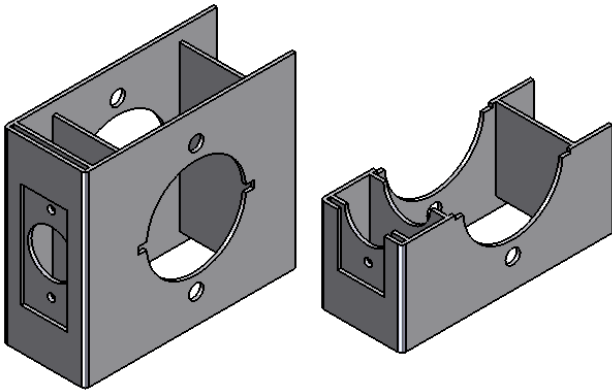
SIZE A	DWG. NO. T-LS00179	REV. 04
SCALE: 1:2	WEIGHT: 0.18	SHEET 1 OF 1



BACKSETS: 2 3/4"[70], 5"[127] OPTIONAL



2500 SERIES LOCKSET METAL DOOR TEMPLATE (2-3/8" BACKSET)



DOOR TYPE: METAL, FLAT OR BEVELED

DOOR THICKNESS: KNOBS 1 3/8"[35] - 1 3/4"[45], LEVERS 1 3/8"[35] - 2"[51]

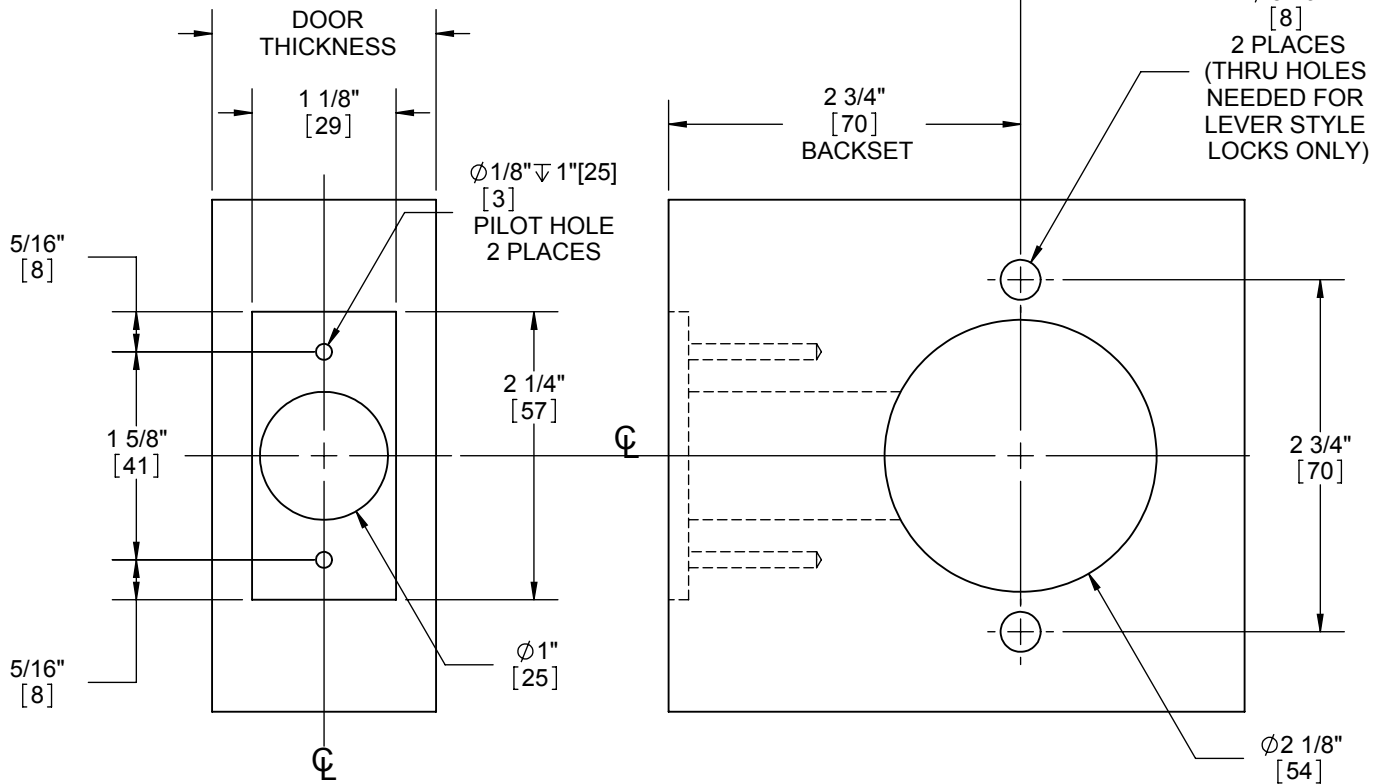
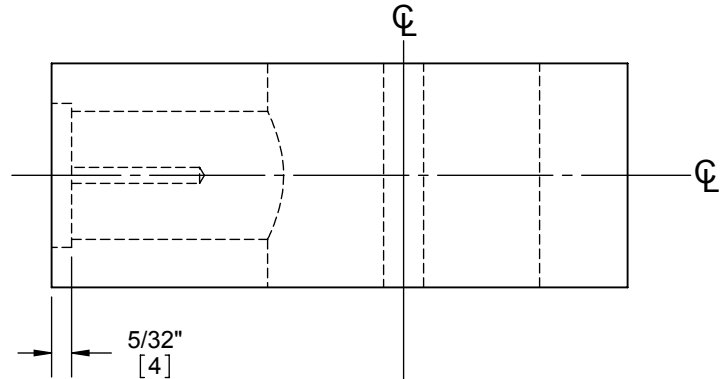
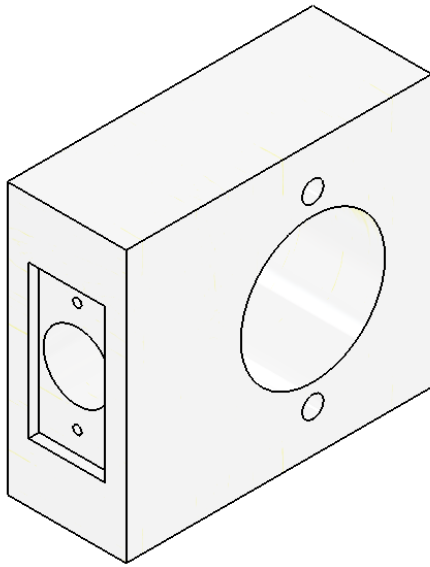
FACEPLATE: SQUARE 1"[25] WIDTH

BACKSETS: 2 3/8"[60]

DIMENSIONS IN [] ARE IN MILLIMETERS



2500 SERIES LOCKSET WOOD DOOR TEMPLATE (2-3/4" BACKSET)



DOOR TYPE: WOOD OR COMPOSITE, FLAT OR BEVELED

DOOR THICKNESS: KNOBS 1 3/8"[35] - 1 3/4"[45], LEVERS 1 3/8"[35] - 2"[51]

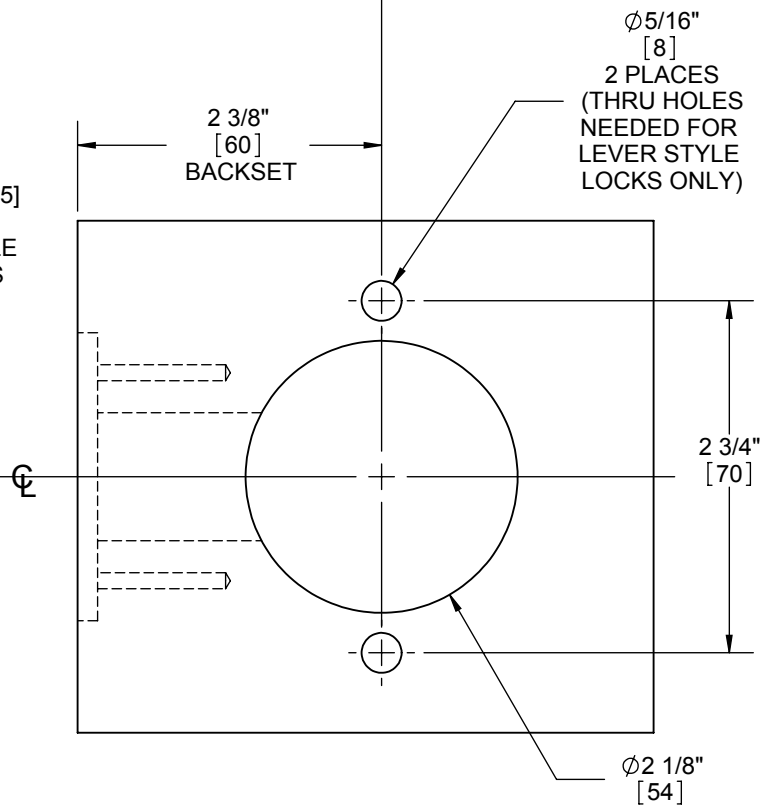
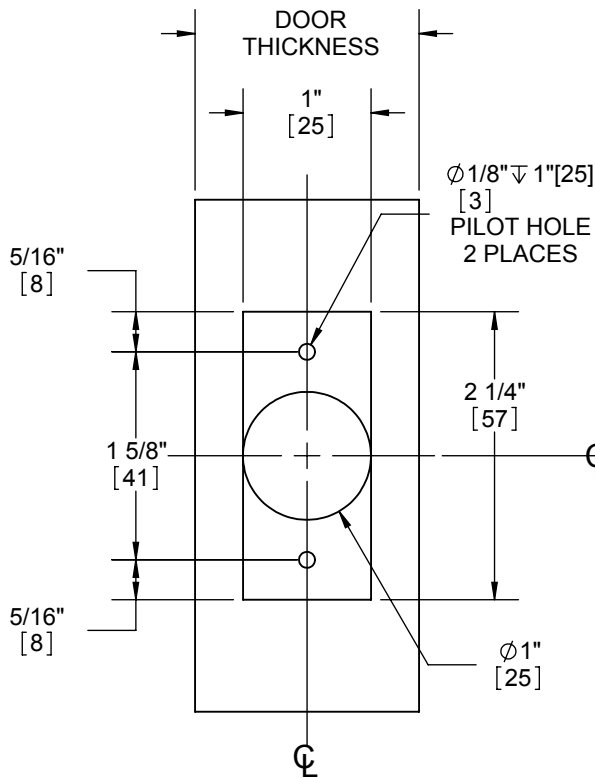
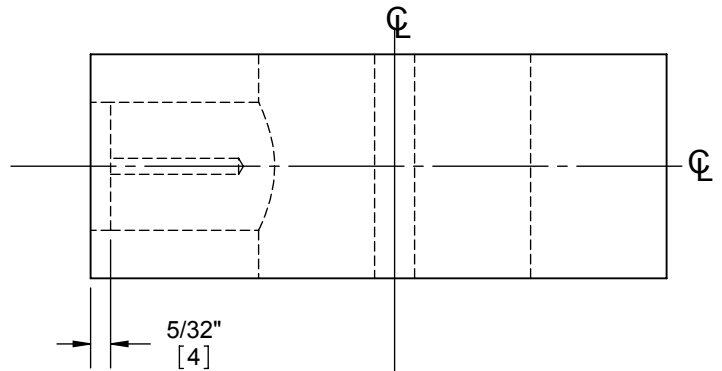
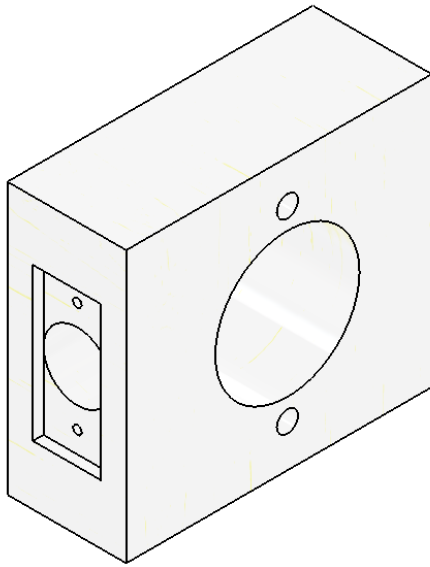
FACEPLATE: SQUARE 1 1/8"[29] WIDTH

BACKSETS: 2 3/4"[70], 5"[127] OPTIONAL

DIMENSIONS IN [] ARE IN MILLIMETERS



2500 SERIES LOCKSET WOOD DOOR TEMPLATE (2-3/8" BACKSET)



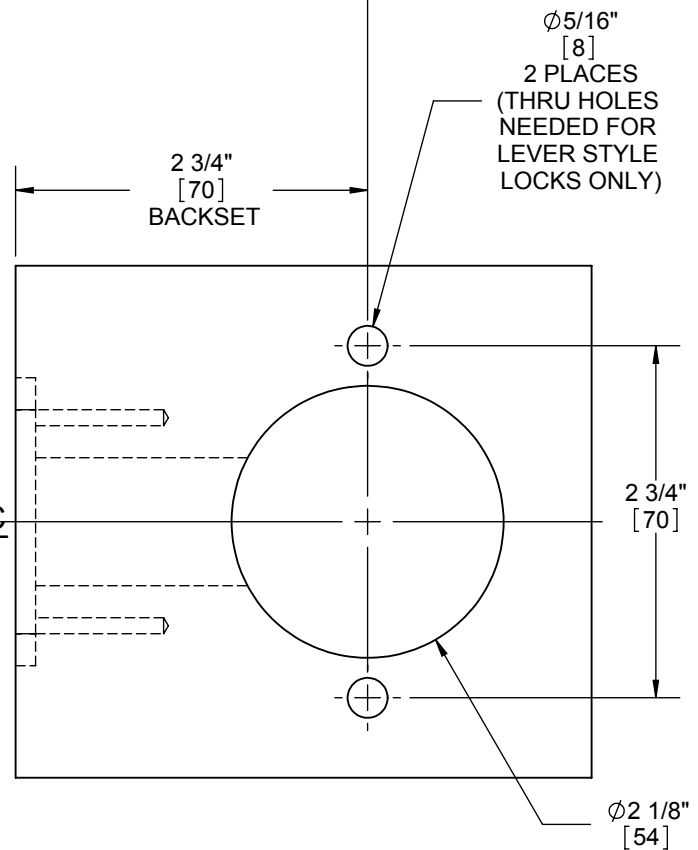
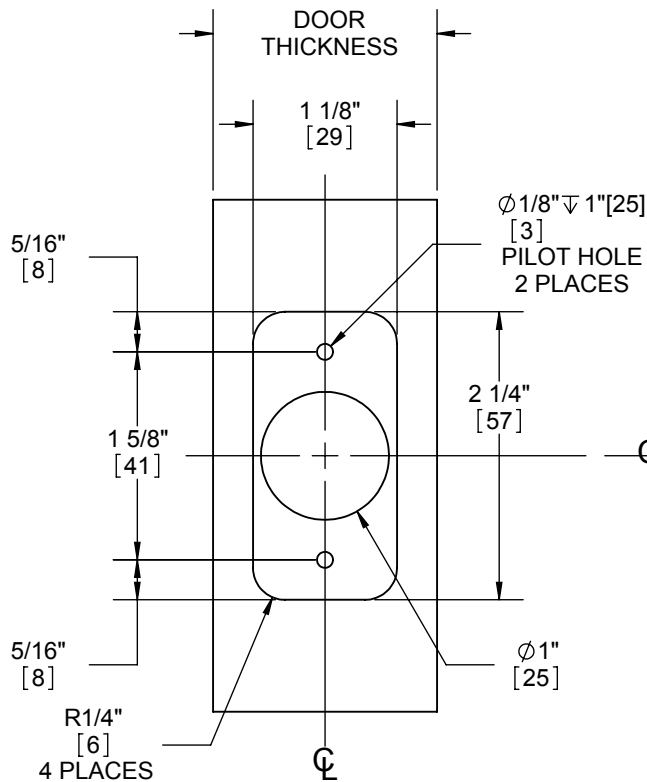
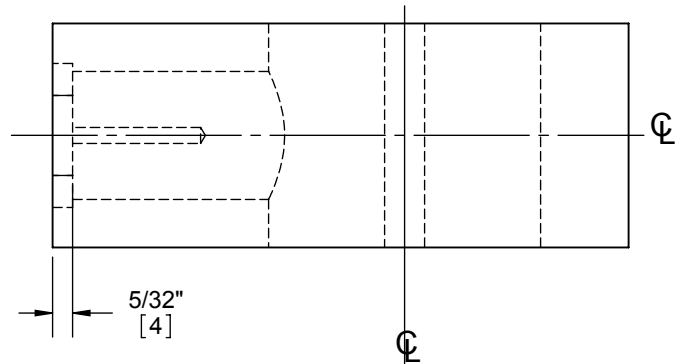
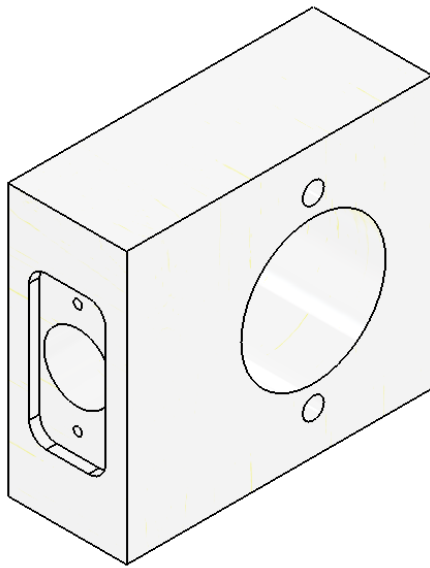
DOOR TYPE: WOOD OR COMPOSITE, FLAT OR BEVELED
DOOR THICKNESS: KNOB 1 3/8"[35] - 1 3/4"[45], LEVER 1 3/8"[35] - 2"[51]
FACEPLATE: SQUARE 1"[25] WIDTH
BACKSET: 2 3/8"[60]

DIMENSIONS IN [] ARE IN MILLIMETERS



2500 SERIES LOCKSET

WOOD DOOR TEMPLATE - ROUND CORNER LATCH (2-3/4" BACKSET)



DOOR TYPE: WOOD OR COMPOSITE, FLAT OR BEVELED

DOOR THICKNESS: KNOBS 1 3/8"[35] - 1 3/4"[45], LEVERS 1 3/8"[35] - 2"[51]

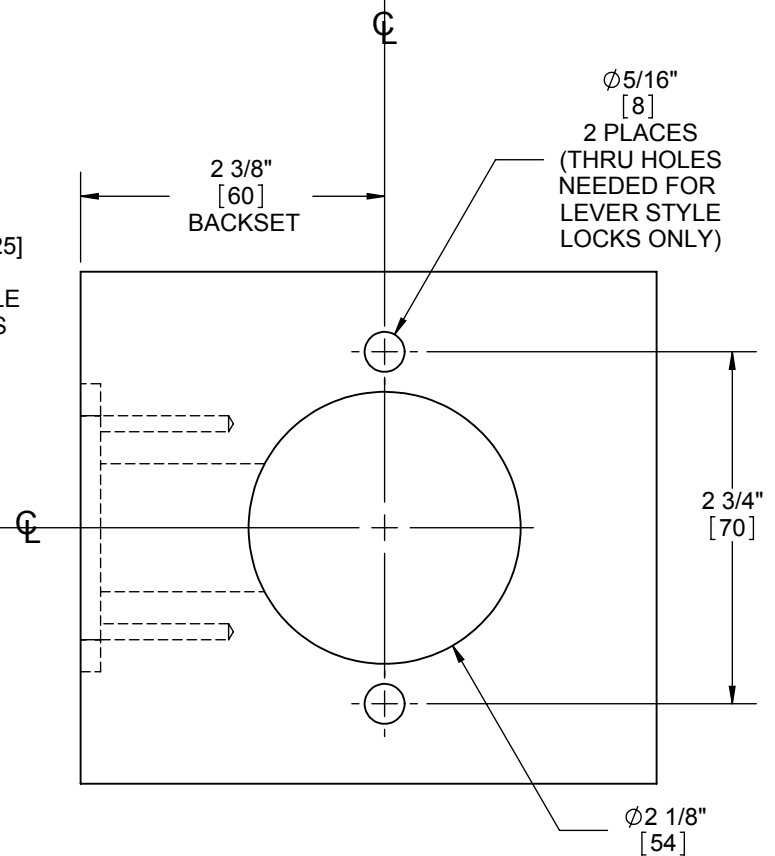
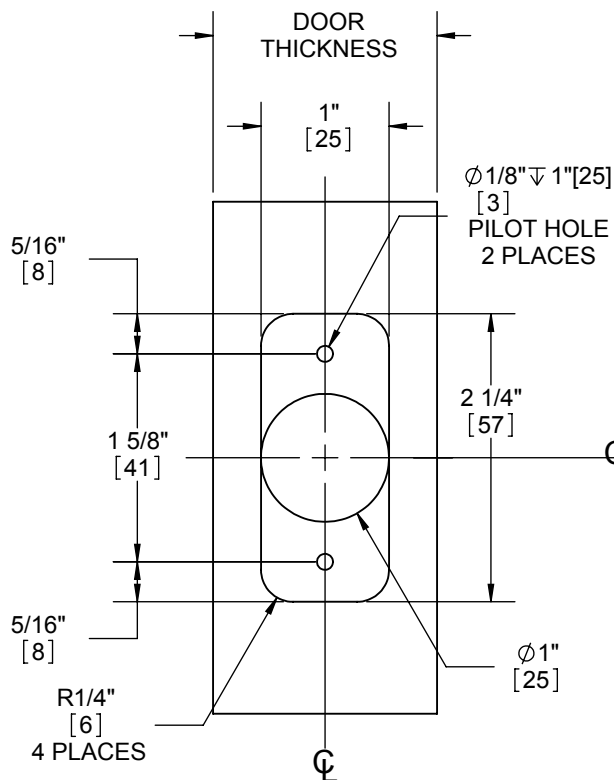
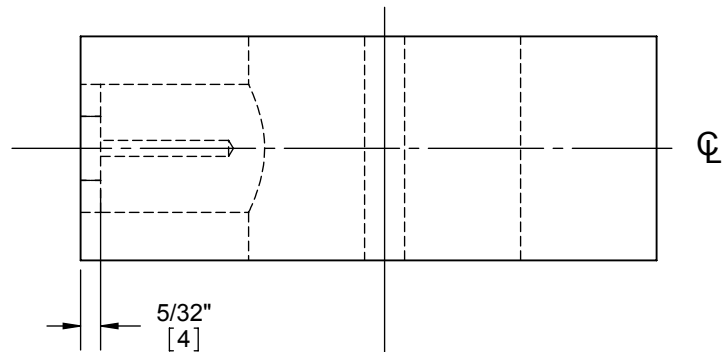
FACEPLATE: 1/4"R, 1 1/8"[29] WIDTH

BACKSETS: 2 3/4"[70], 5"[127] OPTIONAL

DIMENSIONS IN [] ARE IN MILLIMETERS



An isometric drawing of a rectangular block. The left face features a U-shaped slot with two small circular holes on its vertical sides. The front face has a large circular hole in the center, with two small circular holes positioned above and below it.

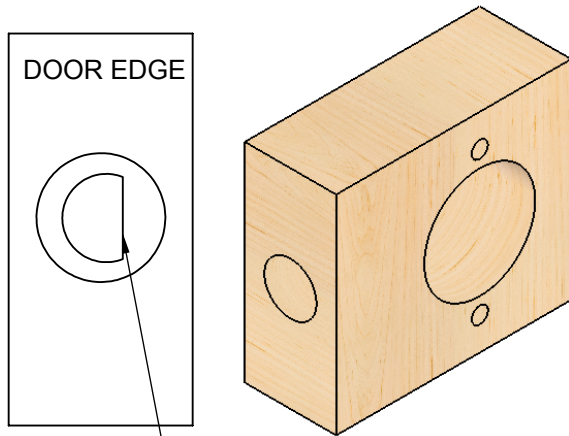


BACKSET: 2 3/8"[60]

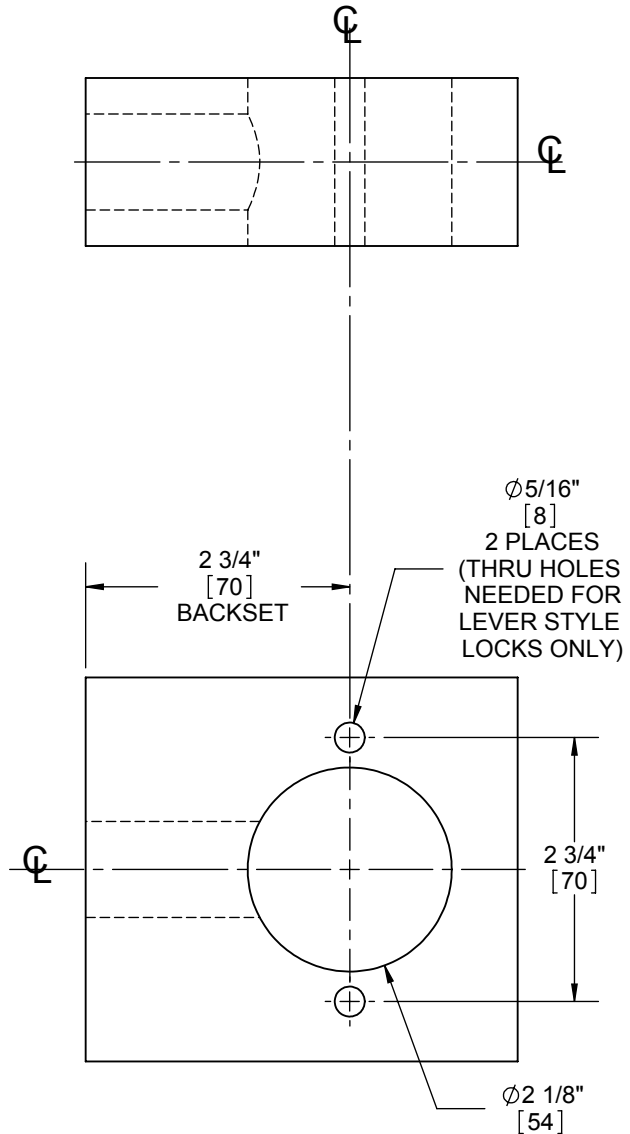
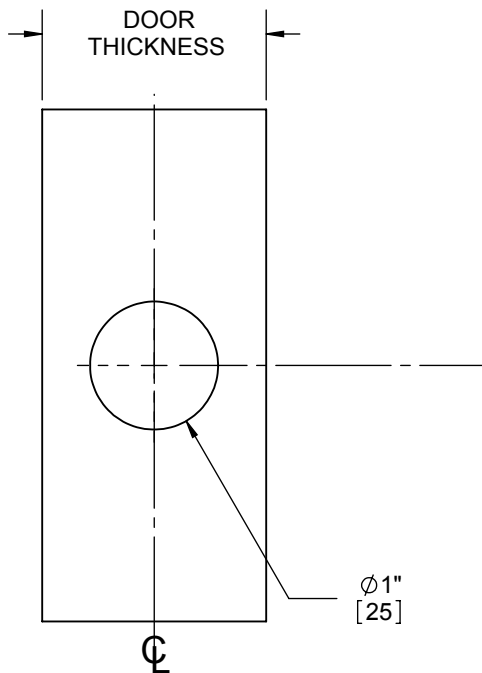


HAGER®
COMPANIES
ST. LOUIS, MISSOURI

2500 SERIES LOCKSET DRIVE-IN LATCHBOLT TEMPLATE (2-3/4" BACKSET)



MAKE SURE TO PROPERLY ORIENT LATCH FOR DESIRED CLOSING BEFORE PRESSING INTO DRILLED HOLE.



NOTE: INSERT LATCH INTO $\phi 1''$ [25] HOLE USING FINGER PRESSURE. THEN WHILE HOLDING A PIECE OF WOOD OVER THE LATCH FACE, STRIKE WITH A Mallet UNTIL LATCH IS SITTING FLUSH WITH DOOR EDGE.

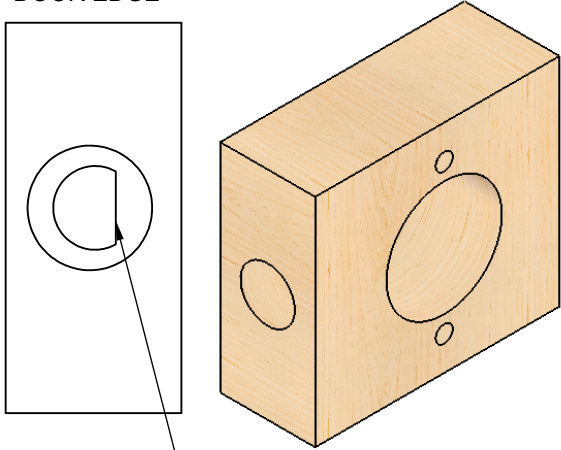
DOOR TYPE: WOOD OR COMPOSITE, FLAT
DOOR THICKNESS: 1 3/8"[35] - 2"[51]
FACEPLATE: CIRCULAR DRIVE-IN
BACKSET: 2 3/4"

DIMENSIONS IN [] ARE IN MILLIMETERS



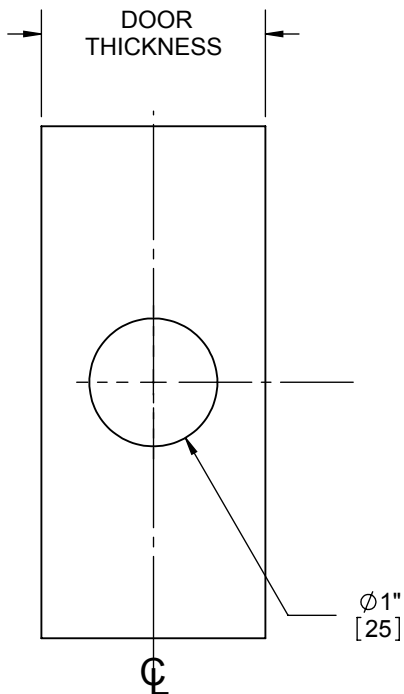
2500 SERIES LOCKSET DRIVE-IN LATCHBOLT TEMPLATE (2-3/8" BACKSET)

DOOR EDGE

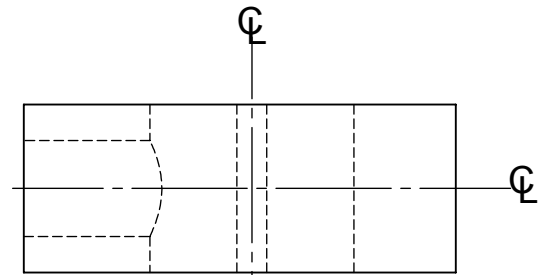


MAKE SURE TO PROPERLY
ORIENT LATCH FOR DESIRED
CLOSING BEFORE PRESSING
INTO DRILLED HOLE.

DOOR
THICKNESS

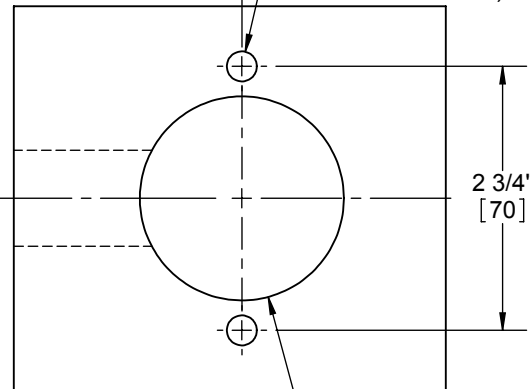


Ø 1"
[25]



2 3/8"
[60]
BACKSET

Ø 5/16"
[8]
2 PLACES
(THRU HOLES
NEEDED FOR
LEVER STYLE
LOCKS ONLY)



2 3/4"
[70]

Ø 2 1/8"
[54]

NOTE: INSERT LATCH INTO Ø 1"[25] HOLE USING FINGER PRESSURE. THEN WHILE HOLDING A PIECE OF WOOD OVER THE LATCH FACE, STRIKE WITH A Mallet UNTIL LATCH IS SITTING FLUSH WITH DOOR EDGE.

DOOR TYPE: WOOD OR COMPOSITE, FLAT
DOOR THICKNESS: 1 3/8"[35] - 2"[51]
FACEPLATE: CIRCULAR DRIVE-IN
BACKSET: 2 3/8"

DIMENSIONS IN [] ARE IN MILLIMETERS

