

2300 Series



Hager 2300 Series tubular lockset provides the necessary security and dependability for applications where there is a need for interior functions requiring a residential look and feel. It is well suited for light duty residential interior applications such as multi-family housing. It is offered in many of the popular designs that are seen throughout the industry today.





2300 SERIES - HOW TO ORDER

2310

Function

10 - Passage
17 - Single Dummy
27 - Double Dummy
40 - Privacy

2³/₄"

Backset/Faceplate

2-3/4" (70 mm)
2-3/8" (60 mm)

US15

Finish

US3
US15
US10B
US26
US26D

US26D

**Interior
Finish**

(if different)

CHA

Lever Style

CHA - Charles Lever
*JHN - Johnston Lever
JOS - Joshua Lever
LOU - Louis Lever
*WRN - Warren Lever

ASA

Strike

ASA
TEE
FLRC and FULL
(Default)

**Product
Group**





- Tubular, DECO

* Handling required for Johnston and Warren levers when specifying single dummy function.

Note:

Finishes other than US10B, US15, and US26D are subject to longer lead times.

2300 SERIES FUNCTION CHART

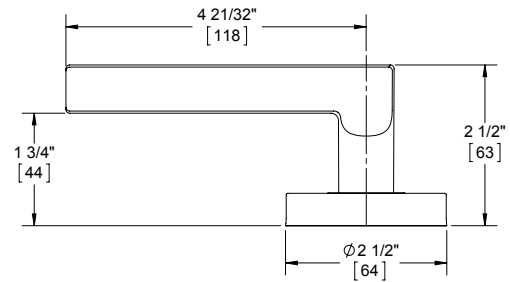
	Function	Function No.	Function Description	ANSI No.
Non-Keyed				
	Passage	10	Latchbolt operated by lever from either side at all times.	-
	Dummy - Single	17	Pull one side, no mechanical operation.	-
	Dummy - Double	27	Pull both sides, no mechanical operation (back to back).	-
	Privacy	40	Latchbolt operated by lever from either side. Outside lever is locked by push button and unlocked by emergency release outside or operating inside lever.	-



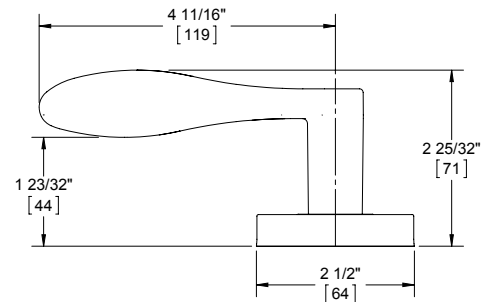


2300 SERIES - LEVER OPTIONS

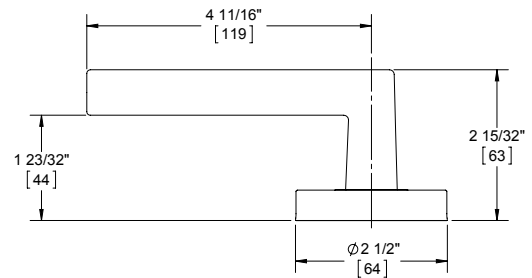
CHARLES LEVER



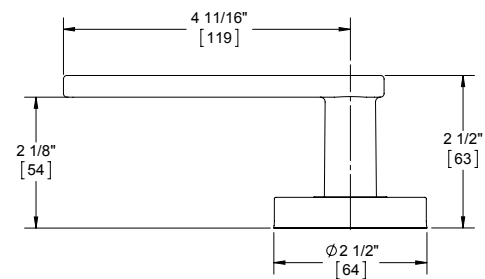
JOHNSTON LEVER



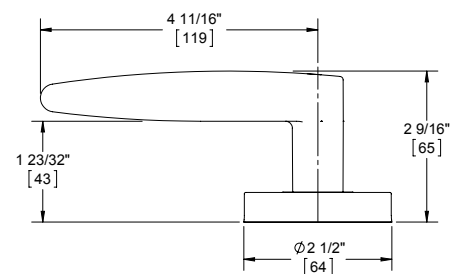
JOSHUA LEVER



LOUIS LEVER



WARREN LEVER





2300 SERIES - DECO TUBULAR - LIGHT DUTY RESIDENTIAL - MULTI FAMILY

WARRANTY

Five-year warranty

FEATURES

- ADA Compliant
- No exposed mounting screws

Lever Options: Charles, Johnston, Joshua, Louis, and Warren

Options: Split finish available

SPECIFICATIONS

Exposed Trim:

- Levers: Solid cast zinc (4.69" / 119 mm length)
- Rose: Stainless steel (2.5" / 63.5 mm diameter)

Door Thickness: 1-3/8" - 1-3/4" (35 mm - 45 mm)

Rose Diameter: 2-1/2" (63.5 mm)

Backset:

- 2-3/4" (70 mm) - Standard
- 2-3/8" (60 mm) - Optional

Latchbolt:

- 7/16" (11 mm) throw
- 1" x 2-1/4" (25 mm x 57 mm) faceplate
- Square and round corner faceplates come standard

Strike: Square and round corner full lip strikes come standard

Door Handing: Non-handed (except for Johnston and Warren, 17 Functions)

Functions: 10 Passage, 17 Dummy, 27 Back to Back Dummy, 40 Privacy

FINISHES

US3, US10B, US15, US26, US26D





2300 SERIES LATCHBOLTS

2300 SERIES ADDITIONAL STRIKES



2-639-7607

2-3/4" Backset Passage Latch

- Square and round corner standard
- 1" x 2-1/4" (25 mm x 57 mm) faceplate
- For use with passage function



2-639-7608

2-3/4" Backset Privacy Latch

- Square and round corner standard
- 1" x 2-1/4" (25 mm x 57 mm) faceplate
- For use with privacy function



2-639-7609

2-3/8" Backset Passage Latch

- Square and round corner standard
- 1" x 2-1/4" (25 mm x 57 mm) faceplate
- For use with passage function



2-639-7610

2-3/8" Backset Privacy Latch

- Square and round corner standard
- 1" x 2-1/4" (25 mm x 57 mm) faceplate
- For use with privacy function



3933

T-Strike with Plastic Dust Box

- 1-1/8" x 2-3/4" (29 mm x 70 mm)
- Dust box included



3935

Standard ASA Strike Plate

- 1-1/4" x 4-7/8" (32 mm x 124 mm)
- 1-5/16" lip
- Other lengths available upon request



3959

Faceplate Adapter

Converts 1" (25 mm) to 1-1/8" (28 mm) width