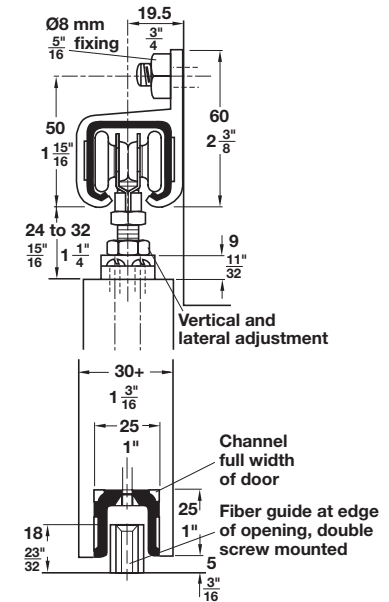
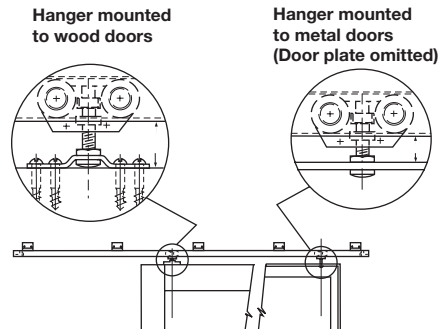
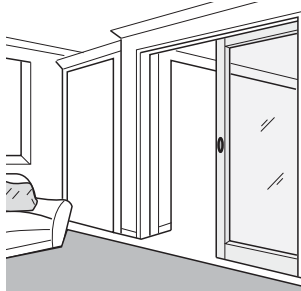


Straightaway 100

- Maximum door weight: 100 kg (220 lbs.)
- Maximum door height: 2.5 m (8' 2 7/16")
- Door thickness: 20 – 50 mm (13/16" – 2")
- Minimum door thickness of 30 mm (1 3/16") when using floor guide channel
- For interior straight sliding doors
- Top hung or wall mounted
- Allows for wood or glass door combination



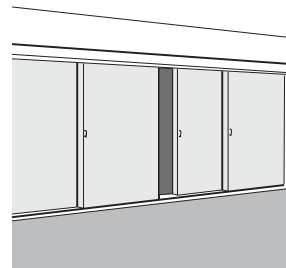
Individual Components

	Description	Material	Finish	Length	Item No.
	Top track, soffit or side mounting with bracket	Steel	galvanized	2.1 m (6' 10 11/16")	941.06.921
	Radius track curve	Steel	galvanized	3 m (9' 10 1/8")	941.06.930
	Top track, pre-drilled for soffit or side mounting with bracket	Stainless Steel	–	0.6 m (23 5/8")	941.06.906
	Top track, pre-drilled for soffit or side mounting with bracket	Stainless Steel	–	2.1 m (6' 10 11/16")	941.06.721
	Side mounting bracket, for use with steel, galvanized and stainless steel top tracks only. Note Required every 500 mm (19 11/16")	Aluminum	–	–	941.06.080
	Closed end piece, to convert side mount bracket and prevent lateral movement of track. Note Required per length of track	Steel	galvanized	–	941.06.081
	Top track, alternative to tracks above; pre-drilled for soffit mounting only	Aluminum	bright extruded	2.1 m (6' 10 11/16")	941.06.821
				3 m (9' 10 1/8")	941.06.830
	Running gear Note Door plate omitted when mounted to metal doors	Steel Wheel: Nylon	galvanized	–	941.06.012
	Height adjustment wrench, required to adjust the position of the trolley hangers for final door alignment.	Steel	galvanized	–	941.06.090
	Track stopper, medium duty, for use with tracks. Note Spacer nib must be filed off when used with 941.06.821/830	Steel	galvanized	–	941.06.040
	Buffer, screw mounted	Rubber	black	–	407.01.930
	Bottom channel insert, pre-drilled for countersunk screws	Aluminum	bright	2.1 m (6' 10 11/16")	942.51.721
				3 m (9' 10 1/8")	942.51.730
	Clear threshold bottom guide Note 1 required per panel	Fiber/ Polypropylene	opaque	–	407.51.059

Dimensions in mm
Inches are approximate

Straightaway 115

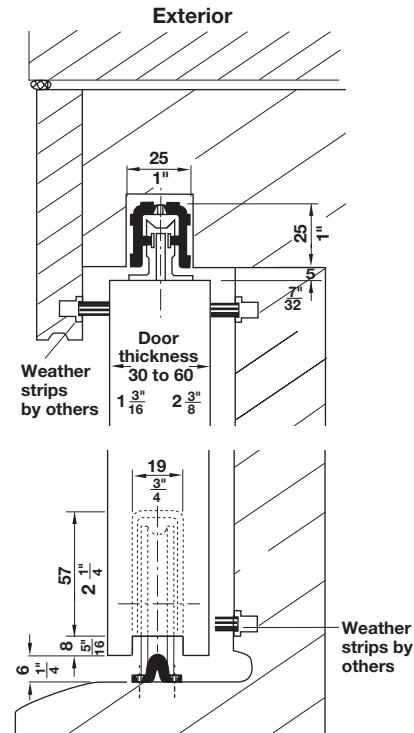
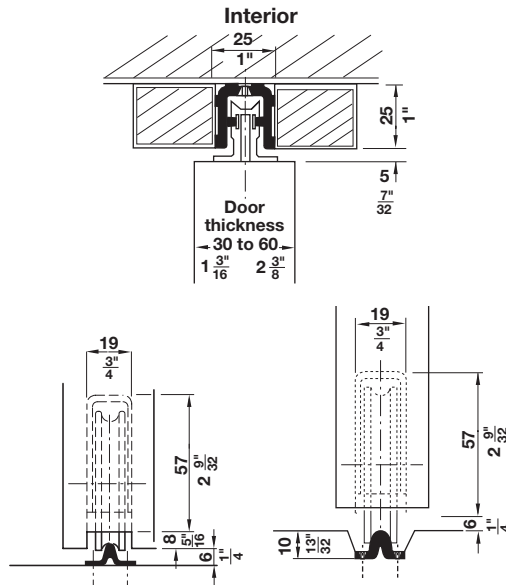
- Maximum door weight: 115 kg (250 lbs.)
- Maximum door height: 2400 mm (7' 10 1/2")
- Door thickness: 30 – 60 mm (1 3/16" – 2 3/8")
- For single and multiple interior and exterior sliding doors
- Rattle-free upper guide
- Simple installation
- Recommended width of door should be a minimum 1/3 of door height
- Mortise for lower running gear must fit tight around the running gear's casing
- Weight of sliding door must be carried on top of casing above the wheel



Interior



Exterior



Individual Components

Order specifications:

- Number of running gears and upper guides
- Lower track and upper guide channel lengths
- Door weight, height and width
- Type of stopper

	Description	Material	Finish	Length	Item No.
	Lower track, pre-drilled, interior use only 10 x 21 mm (3/8" x 7/8")	Steel	galvanized	3 m (9' 10 1/8")	404.39.921
	Lower track, pre-drilled 10 x 21 mm (3/8" x 7/8")	Stainless Steel	-	3 m (9' 10 1/8")	941.80.631
				2.1 m (6' 10 11/16")	941.80.622
	Upper guide channel 25 x 25 mm (1" x 1")	Aluminum	-	3 m (9' 10 1/8")	942.51.730
				2.1 m (6' 10 11/16")	942.51.721
	Lower running gear, wheel with needle bearing, for 115 kg (250 lbs.) heavy doors	Casing: Die-cast Wheel: Nylon	-	-	404.36.020
	Lower running gear, wheel with needle bearing, for 55 kg (120 lbs.) heavy doors, interior application only	Casing: Die-cast Wheel: Nylon	-	-	404.36.011
	Upper guide, rattle-free with brush strip	Aluminum	-	-	404.36.904
	Buffer	Rubber	black	-	941.80.050